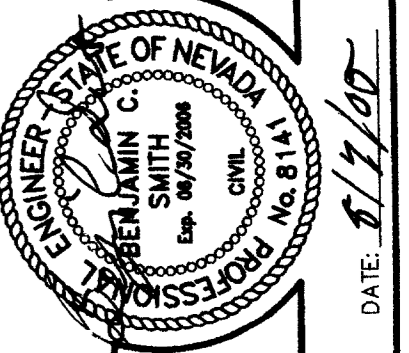
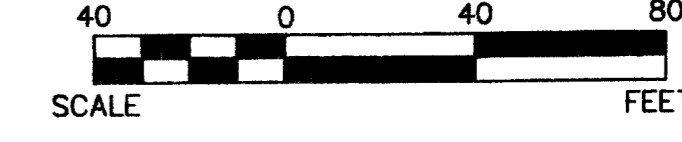
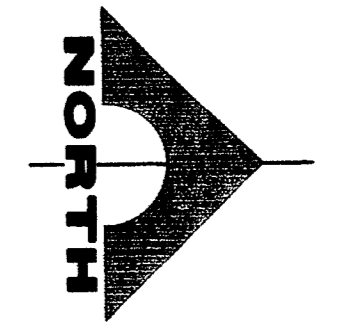
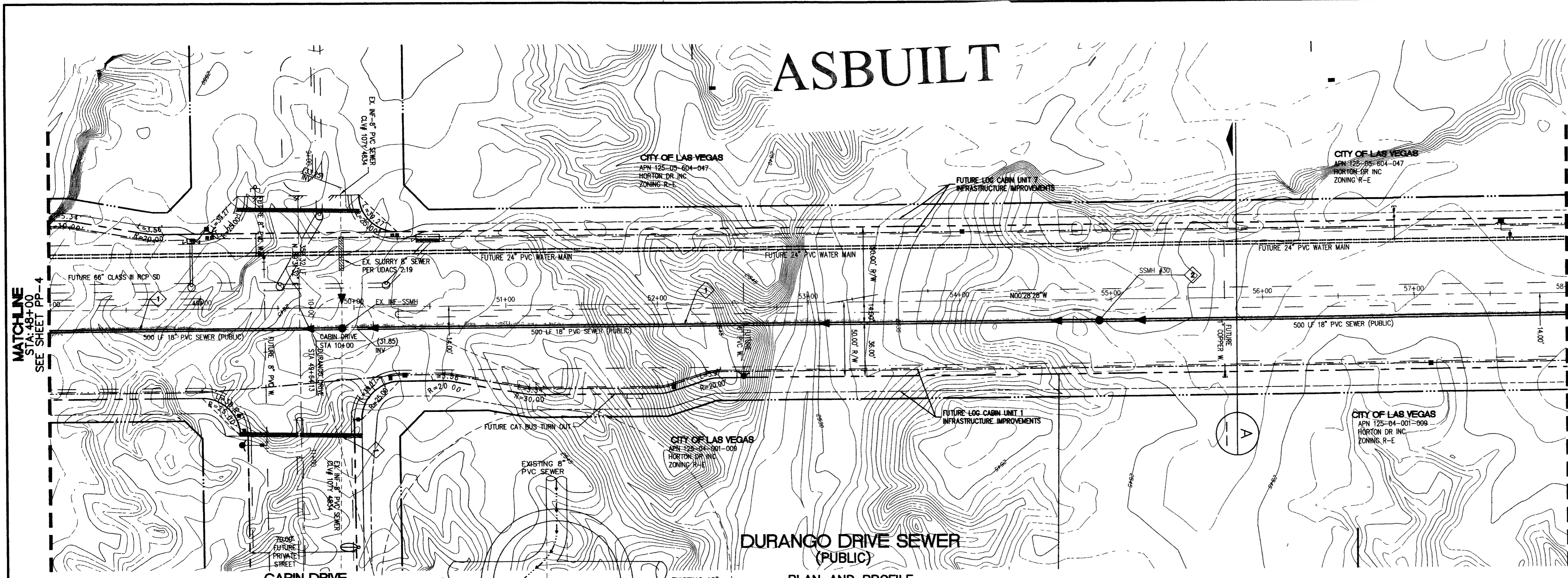


# ASBUILT

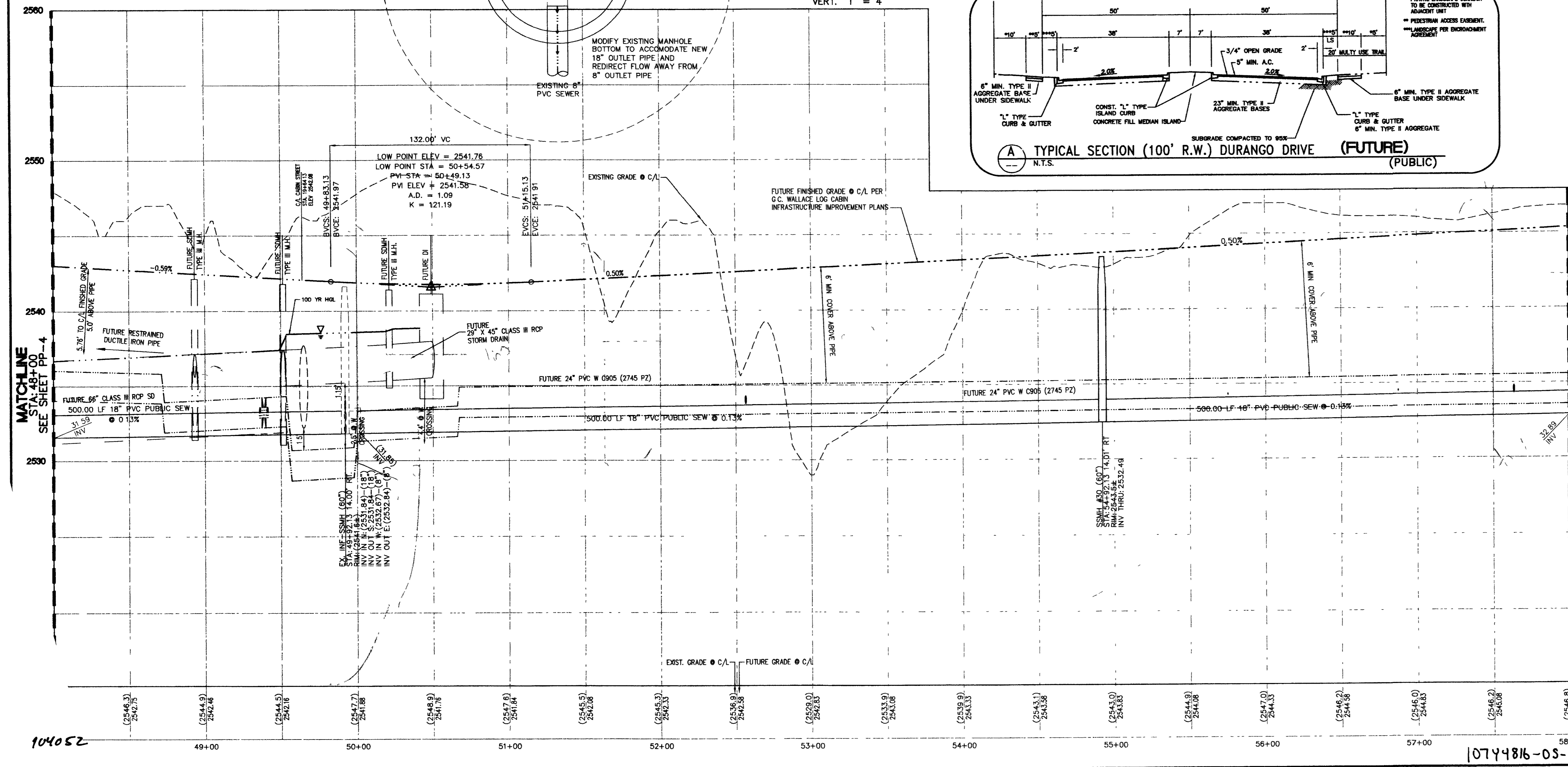
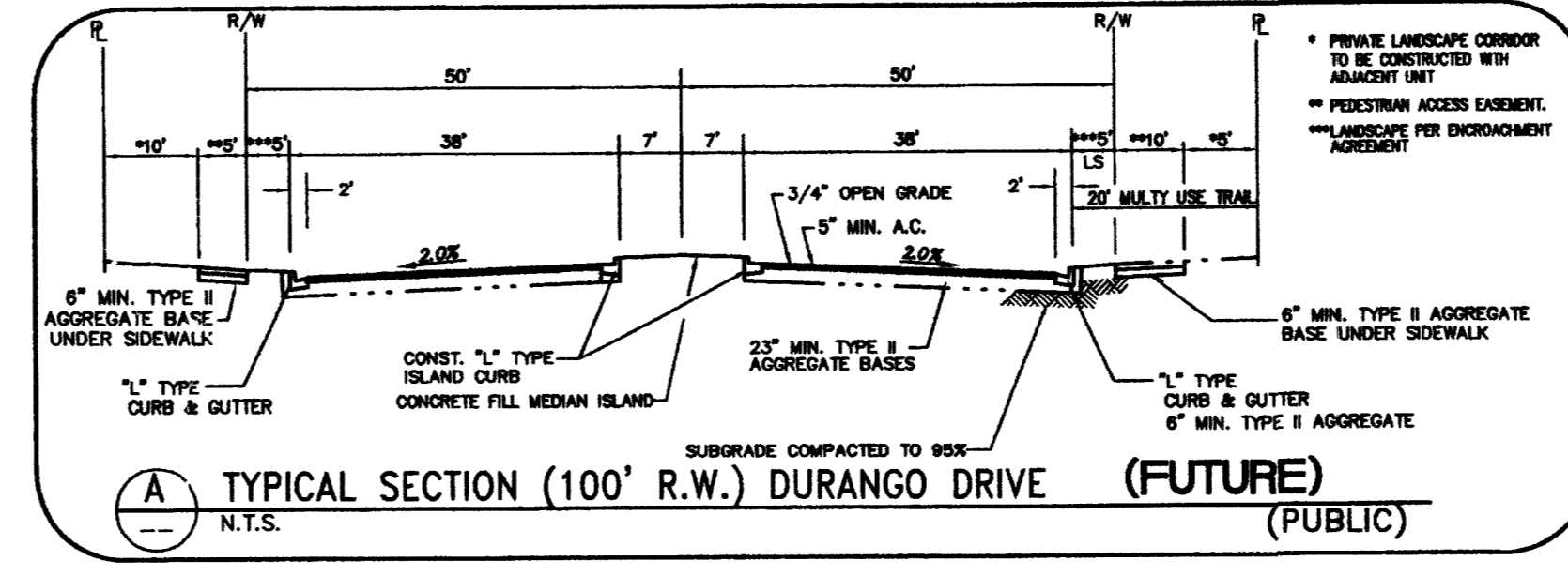


DATE: 1/1/07

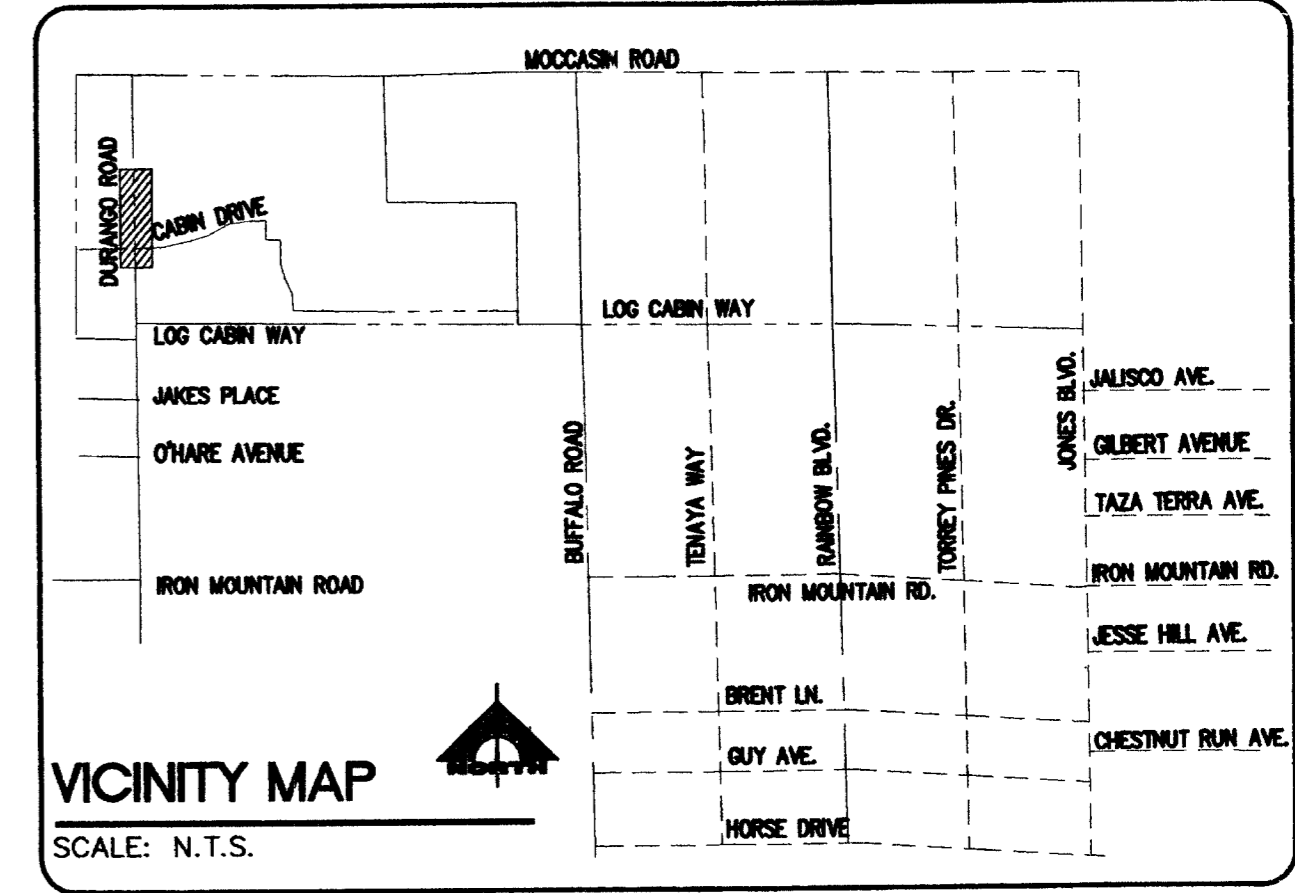


## DURANGO DRIVE SEWER (PUBLIC)

SCALE  
HORIZ. 1" = 40'  
VERT. 1" = 4'



MATCHLINE  
STA. 48+00  
SEE SHEET PP-6



### VICINITY MAP

SCALE: N.T.S.

### BENCHMARK

CITY OF LAS VEGAS VERTICAL CONTROL  
CITY OF LAS VEGAS BM #1V90444 1/4 CORNER, BLM 1990 D MOCCASIN AND CHIMARON  
ELEVATION: 759.8707 METERS (NAV88)  
2493.01 FEET

### BASIS OF BEARINGS

NORTH 00°28'28" WEST BEING THE BEARING OF THE WEST LINE OF THE NORTHWEST QUARTER (NW/4) OF SECTION 4, TOWNSHIP 19 SOUTH, RANGE 60 EAST, M.D.M. CITY OF LAS VEGAS, CLARK COUNTY, NEVADA, AS SHOWN BY MAP THEREOF ON FILE IN FILE 105, PAGE 09 OF PARCEL MAPS IN THE CLARK COUNTY RECORDER'S OFFICE, CLARK COUNTY, NEVADA.

### SEWER NOTES

- 1. INSTALL SEWER MAN TRENCH SECTION BACKFILL PER COWD DWG. S016
- 2. INSTALL SANITARY SEWER MANHOLE PER COWD DWG. S01
- 3. STUB AND PLUG FOR FUTURE USE

**NOTE:**  
CONTRACTOR TO VERIFY THE HORIZONTAL AND VERTICAL LOCATION OF EXISTING UTILITIES PRIOR TO CONSTRUCTION. REPORT ANY DISCREPANCIES TO ENGINEER IMMEDIATELY.

Avoid cutting underground utility lines. It's costly.  
**Call before you Dig.**  
1-800-227-2600  
UNDERGROUND SERVICE (USA)

Avoid hitting overhead power lines. It's costly.  
**CALL BEFORE YOU DO OVERHEAD**  
1-702-227-2929

**Call before you UnderGround**  
1-702-455-7511  
CLARK COUNTY TRAFFIC OPERATIONS AND  
1-702-229-6611  
LAS VEGAS AREA COMPUTERIZED TRAFFIC SYSTEM

LOG CABIN RANCH - OFFSITE SEWER OPTION I

DR. HORTON, INC.

DURANGO DRIVE SEWER

PLAN AND PROFILE STA 48+00 TO STA 58+00

SHEET  
PP-5

7 OF 8 SHEETS

104052

1074816-03-11