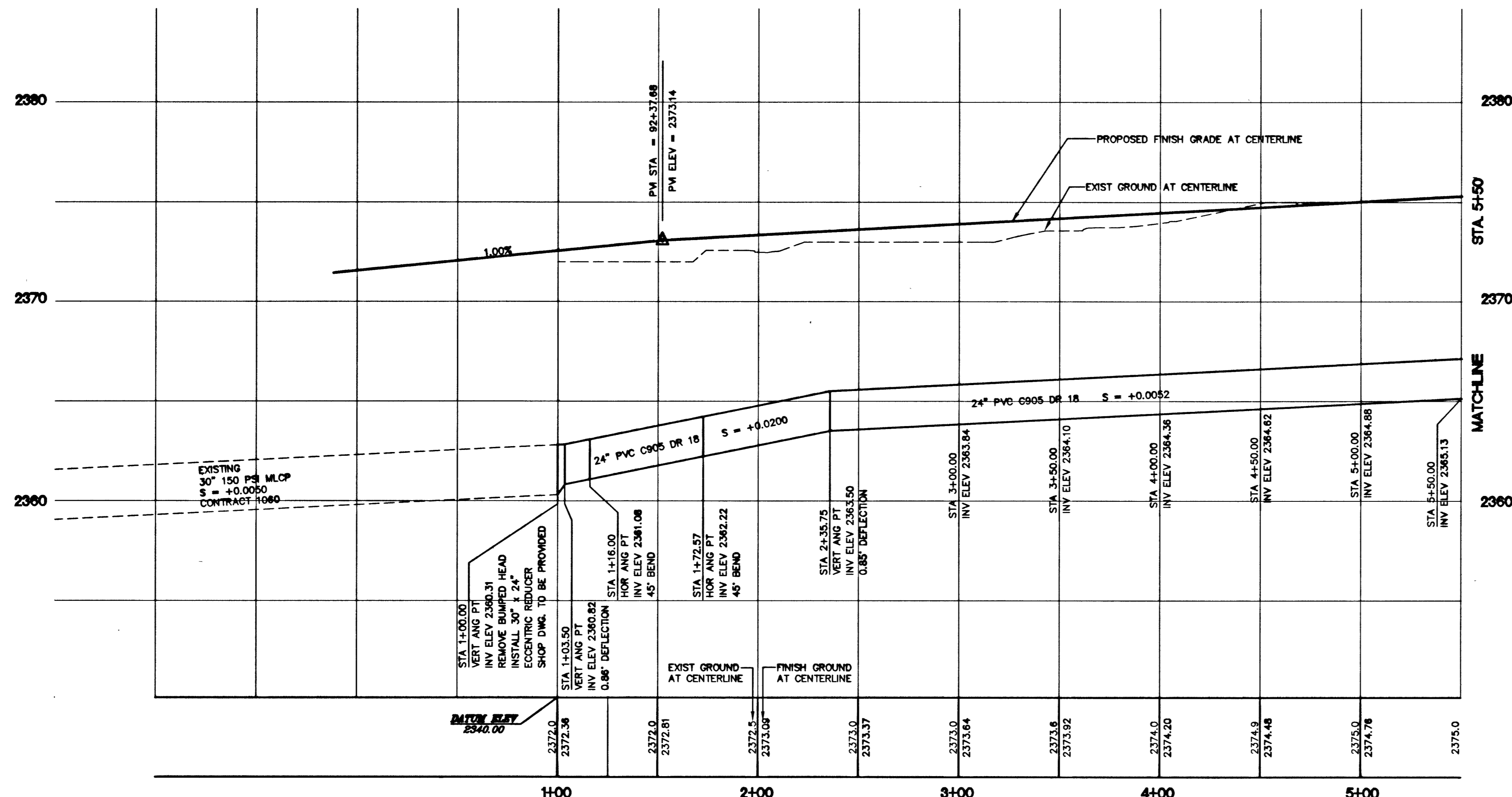
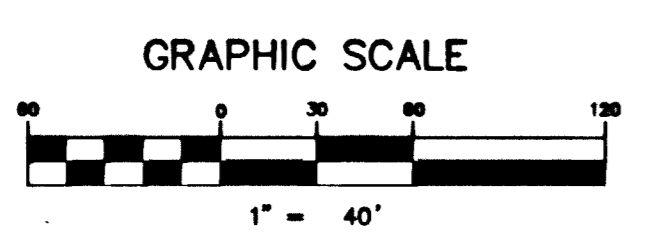


JONES BOULEVARD 24" WATER MAIN-PLAN AND PROFILE

SCALE: HOR. 1"=40', VER. 1"=4'



NOTE
RESTRAIN ALL JOINTS FROM:
STA. 1+00.00 TO STA. 1+28.00,
STA. 1+58.57 TO STA. 1+86.57,
STA. 6+79.43 TO STA. 7+07.43,
STA. 7+36.00 TO STA. 7+64.00,
STA. 12+44.44 TO STA. 13+94.07,
STA. 9+40.52 TO STA. 11+44.32.

WATER MAIN JOINT DEFLECTION (PVC 4"-24")
PVC PIPE SHALL BE DEFLECTED AT THE JOINT ONLY. THE MAXIMUM ALLOWABLE DEFLECTION SHALL BE ONE (1) DEGREE PER JOINT WITH A MINIMUM RADIUS OF CURVATURE OF 1,150 FEET, PER UDACS 2.06.01 AND 2.06.02.

- NOTE**
- INSTALL PIPELINE MARKER BALLS IN TRENCH ABOVE EACH FITTING, PER UDACS PLATE NO. 27 ESN.082
 - THIS PROJECT PROVIDES FOR THE INSTALLATION OF OFF-SITE MAINS ONLY, AND DOES NOT PROVIDE OR IMPLY ANY WATER COMMITMENT. ESN.054
 - FOR ALL MATERIALS NOT ON THE APPROVED PRODUCTS LIST, SHOP DRAWINGS FOR ALL POLYVINYL CHLORIDE PRESSURE PIPE (C-905), FITTINGS, ACCESSORIES, AND APPURTENANCES SHALL BE SUBMITTED TO THE LAS VEGAS VALLEY WATER DISTRICT, ENGINEERING SERVICES DIVISION, FOR REVIEW AND APPROVAL. ESN.044
 - PROVIDED SHOP DRAWINGS ON ALL PRODUCTS NOT ON LVVWD APPROVED PRODUCTS LIST.

NEW PVC DATA
DR 18 C-905
O.D. = 25.8 INCHES
THICKNESS = 1.43 INCHES

OVERSIZING DATA
STA. 10+00.00 TO STA. 13+94.07
OVERSIZED FROM 12" TO 24"

LEGAL DESCRIPTION
A PORTION OF THE NORTH HALF (N 1/2) OF WEST HALF (W 1/2) OF SOUTH HALF (S 1/2) OF THE NORTHWEST QUARTER (NW 1/4) OF SECTION 12, TOWNSHIP 19 SOUTH, RANGE 60 EAST, M.D.M., CITY OF LAS VEGAS, CLARK COUNTY, NEVADA.

BASIS OF BEARING
THE BASIS OF BEARINGS FOR THIS PROJECT IS GRID NORTH AS DEFINED BY THE NEVADA COORDINATE SYSTEM OF 1983 (NCS83), EAST ZONE, (2701), DETERMINED BY CLARK COUNTY GIS CONTROL POINTS 802, 803, 807 AND 805, AS SHOWN ON A RECORD OF SURVEY ON FILE IN THE CLARK COUNTY, NEVADA, RECORDER'S OFFICE, IN BOOK 88 OF SURVEYS, AT PAGE 53.

PROJECT BENCHMARK
PROJECT VERTICAL DATUM: NAVD88
CITY OF LAS VEGAS BENCHMARK 11V90-13NES NAVD88 ELEV: 710.9181 METERS (2332.40 FEET)
BRASS CAP IN CONCRETE AT SW CORNER OF DECATUR AND GRAND TETON (CNLV BM #4 13 148)

PROJECT NAME: Jones Horse 24" Off-site Utility
Main Ext. Project # 27462
This project water plan complies with the Las Vegas Valley Water District's technical requirements. However, this water plan is (SHEET 1-8)
NOT APPROVED FOR CONSTRUCTION
at this time and this signature does not provide or imply a water commitment.
Gary Lang 8/24/03
LVVWD DATE ESN.052

ENGINEER DISCLAIMER NOTE:
UTILITY LOCATIONS SHOWN HEREON ARE APPROXIMATE ONLY. IT SHALL BE THE CONTRACTOR'S RESPONSIBILITY TO DETERMINE THE EXACT HORIZONTAL AND VERTICAL LOCATION OF ALL EXISTING UNDERGROUND AND OVERHEAD UTILITIES AND NOTIFY THE DESIGN ENGINEER IMMEDIATELY OF ANY DISCREPANCIES PRIOR TO COMMENCING CONSTRUCTION.
NO REPRESENTATION IS MADE THAT ALL EXISTING UTILITIES ARE SHOWN HEREON. THE ENGINEER ASSUMES NO RESPONSIBILITY FOR UTILITIES NOT SHOWN OR UTILITIES NOT SHOWN IN THEIR PROPER LOCATION.

Call before you Overhead 1-702-593-6111
Call before you Dig 1-800-227-2800

7	6	5	4	3	2	1	REV	DATE	BY

CITY OF LAS VEGAS

U.S. HOME
3785 E. SUNSET #81
LAS VEGAS, NV 89120
(702) 438-7700

PLAN AND PROFILES
JONES BOULEVARD
24" OFF-SITE WATER MAIN

JONES/HORSE
AT IRON MOUNTAIN RANCH

SHEET
AUG 2003

DESIGNED BY:
MAS

CHECKED BY:
DJP

PROJECT NO:
817-A

SCALE: 1" = 40' HORZ.
1" = 4' VERT.

SEAL
PROFESSIONAL ENGINEER STATE OF NEVADA
PAPPA
CIVIL
NO. 15815
EXPIRES 12-31-03 8/24/03

SHEET
PP-1
4 OF 8 SHEETS
DRAWING NO.
1074771-02