

NOTE: COORDINATE RELOCATION OF ROSES WITH THE OWNER.

LIMIT OF CONST. SAWCUT AND MATCH EX. AC S S/W

MEDOZA, SANTOS  
018-053-007

GRANETT, STANLEY & HARRIETTE  
018-053-008

CONNER LOUIS & CONNER LOTUS JR.  
018-053-011

CONNER LOUIS & GLORIA  
018-053-009

LAKE MEAD BOULEVARD

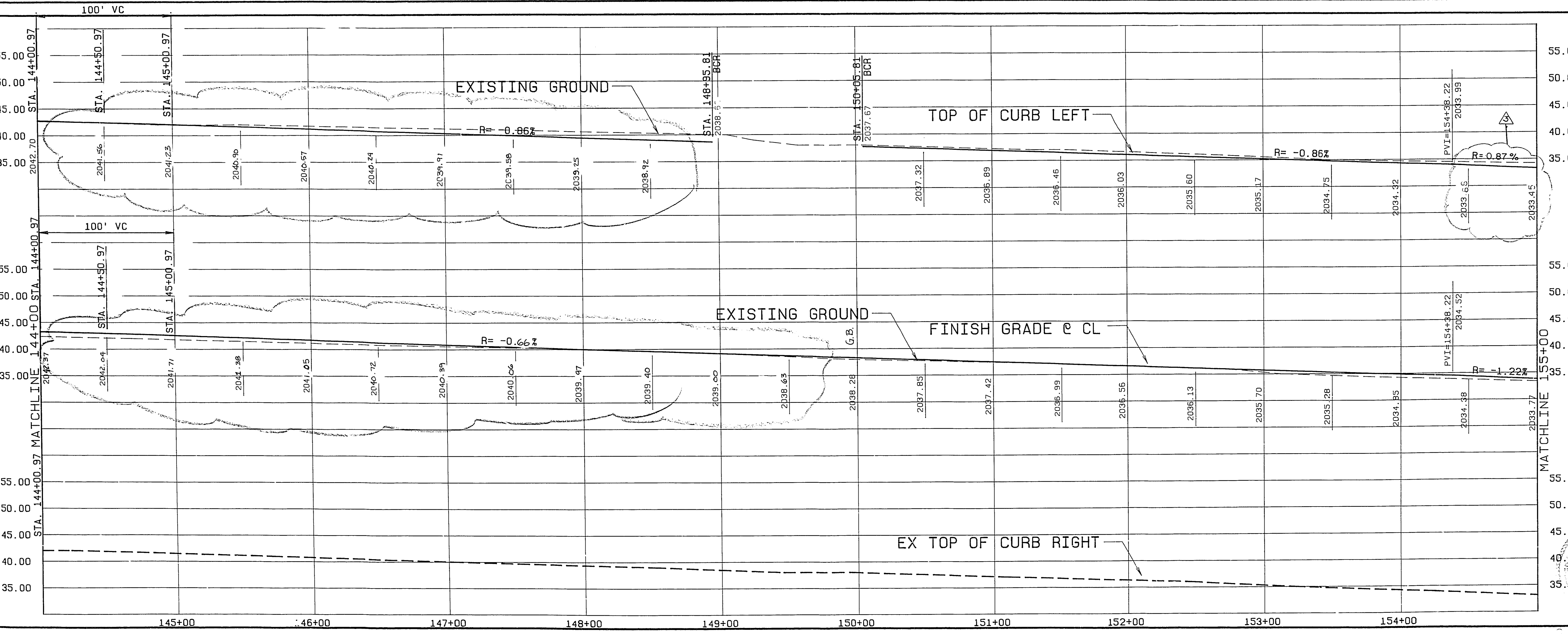
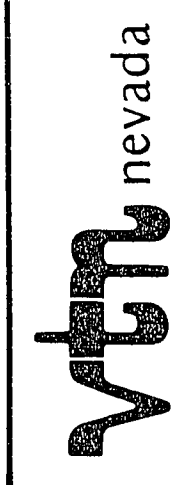
BACK OF CURB CURVE TABLE

CURVE	ARC	DELTA	RADIUS	TANGENT
1	46.94'	89° 38' 27"	30.00'	29.82'
2	47.30'	90° 20' 33"	30.00'	30.18'

REV	DATE	BY	REVISION
1	3/2/91	MTS	REV. GRADES FOR CONCRETE MANAGEMENT AS-BUILT
2	2/3/91	M.T.S.	REV. GRADES TO MATCH EX. CURB @ 151+5.7
3	10/17/90	AJE	ADDED NOTE 11
4	10/17/90	WJZ	REVISED FIELD REALIGNS, ETC...

CITY OF LAS VEGAS  
LAS VEGAS, NEVADA

CONSULTING ENGINEERS - PLANNERS  
2300 PASEO DEL PRADO BUILDING A, SUITE 100  
LAS VEGAS, NEVADA 89102 PHONE (702) 873-7550

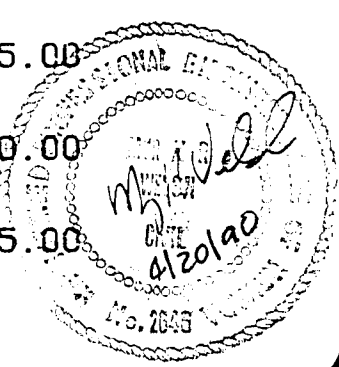


TITLE  
STA. 144+00 TO STA. 155+00  
STREET PLAN AND PROFILE

PROJECT  
LAKE MEAD BOULEVARD  
TONOPAH TO INTERSTATE 15

WD NO.	3661
BY	D.L.A.
DATE	11/1/89
SCALE	HOR: 1"=40' VER: 1"=10'

SHEET  
25  
OF 29 SHEETS



107-21907