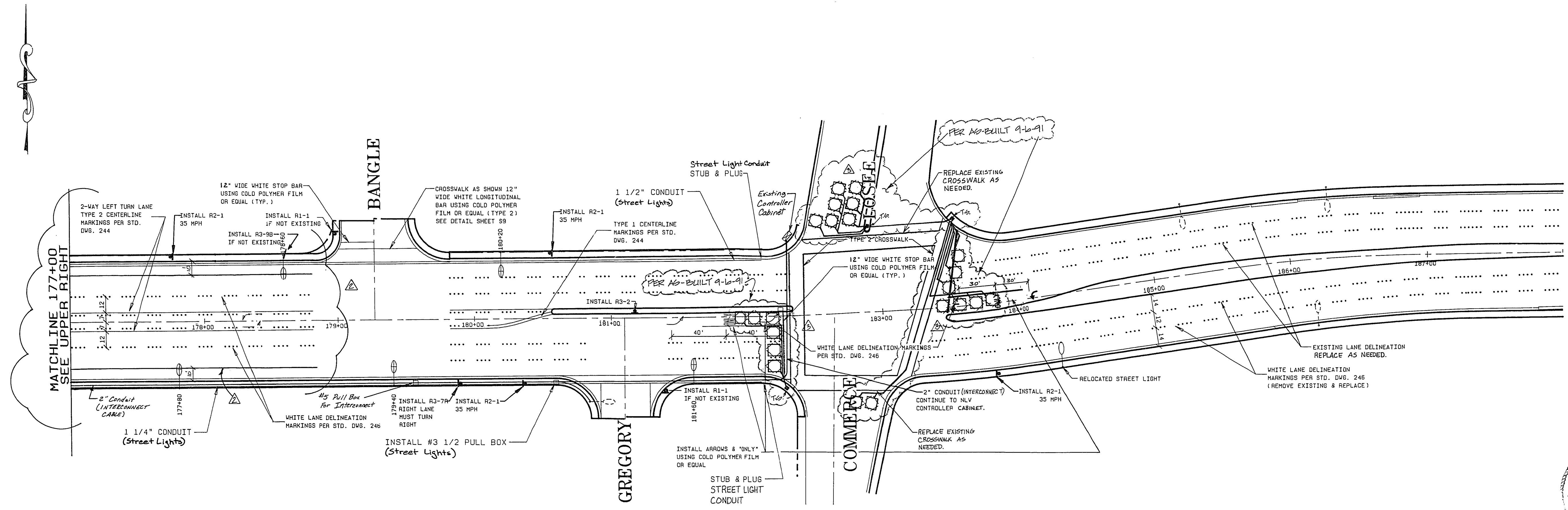


LAKE MEAD BOULEVARD

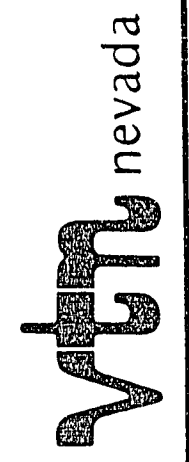
NOTE: SEE DETAIL SHEET S7 FOR STREET LIGHT INSTALLATION STA. 170+00 TO STA. 182+00 NORTH SIDE OF STREET.



LAKE MEAD BOULEVARD

REV	DATE	BY	REVISION
1	9/10/91	JUR	REV TRAFFIC SIGNALS PER AS-BUILT 9-10-91
2	10/17/90	ACE	REV. TO LANES TO 4 LANES.
3	5/21/90	T/M/M	Misc. Revisions Per H.L.V. Request, Etc.

CITY OF LAS VEGAS,  
LAS VEGAS, NEVADA



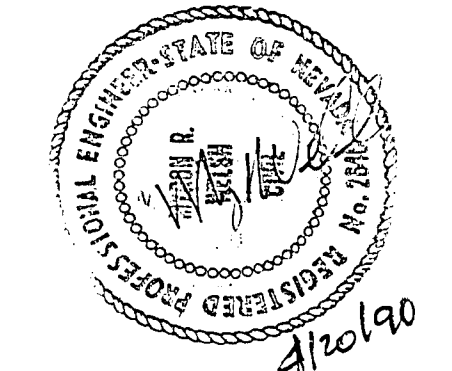
CONSULTING ENGINEERS - PLANNERS  
2300 PASEO DEL PRADO BUILDING A SUITE 100  
LAS VEGAS, NEVADA 89102 PHONE (702) 873-7550

TITLE  
STA. 166+00 TO STA. END  
TRAFFIC & STREET LIGHT PLAN

PROJECT  
LAKE MEAD BOULEVARD  
TONOPAH TO INTERSTATE 15

NO. 3561  
BY J.T./D.L.A.  
DATE 1/29/90  
SCALE HOR: 1"=40'

SHEET  
T4  
OF 29 SHEETS



4-2-196

107-M-07