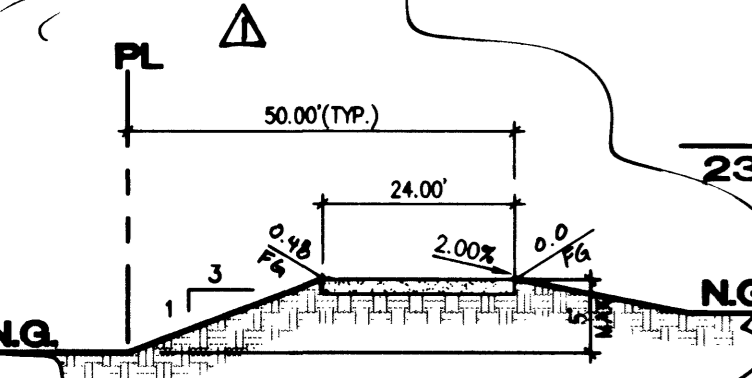


BENCHMARK
 PROJECT VERTICAL DATUM: NAVD88
 CITY OF LAS VEGAS BENCHMARK 1LV00-4SES
 NAVD88 ELEV: 713.6497 METERS (2342.02 FEET)

RIVET AND PLATE IN TOP OF CURB, NORTHWEST RETURN OF ALEXANDER ROAD AND BUFFALO DRIVE

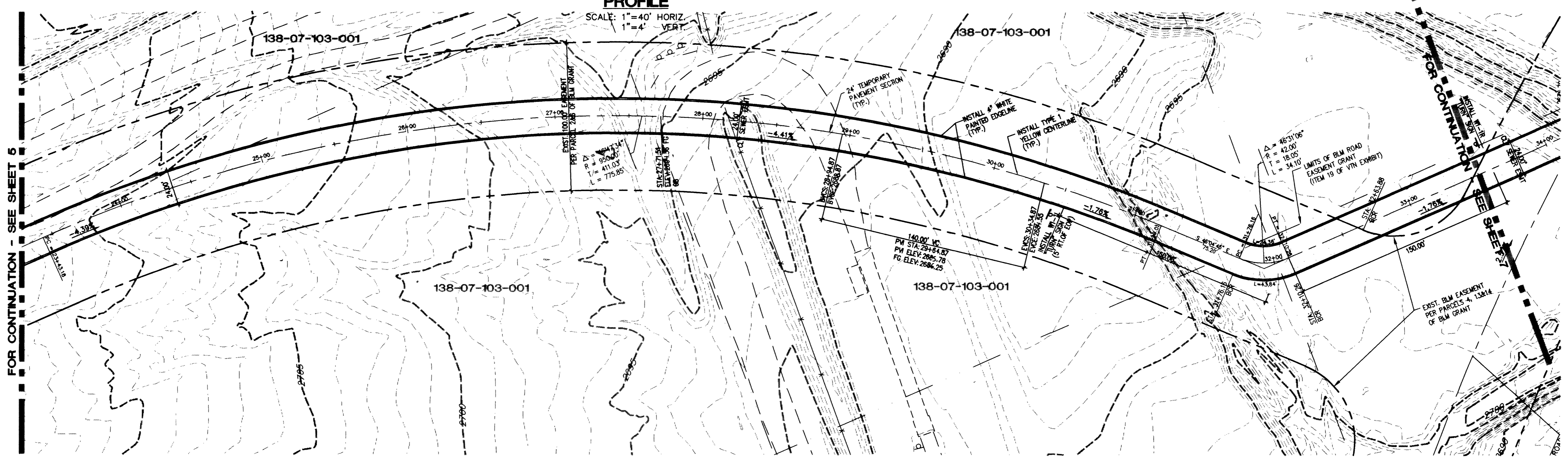


TEMP. ACCESS ROAD SECTION
 (2" AC PAVEMENT OVER 4" TYPE II AGG. BASE)

NOTE: CONTRACTOR SHALL VERIFY HORIZONTAL AND VERTICAL LOCATION OF EXISTING UTILITIES AND NOTIFY THE DESIGN ENGINEER IMMEDIATELY OF ANY DISCREPANCIES PRIOR TO CONSTRUCTION.

BASIS OF BEARINGS:
 NORTH 87°08'14" BEING THE BEARING OF THE SOUTH LINE OF THE SOUTHEAST QUARTER (SE 1/4) OF THE SOUTHEAST QUARTER (SE 1/4) OF SECTION 1, TOWNSHIP 20 SOUTH, RANGE 59 EAST, AS SHOWN ON A RECORD OF SURVEY ON FILE IN THE CLARK COUNTY, NEVADA, RECORDER'S OFFICE, IN FILE 89 OF SURVEYS, AT PAGE 3.

Avoid cutting underground utility lines. It's costly.
 Avoid overhead power line contact.
Call before you Dig
 1-800-227-2800
Call before you Overhead
 1-702-593-6111



DATE	BY	REVISION
11/27/00	TML	REVISE Access Road
		KB 11/16/02

KAUFMAN AND BROAD
 700 PILOT ROAD, SUITE F
 LAS VEGAS, NEVADA 89119
 (702) 614-2500

2727 SOUTH RAINBOW BOULEVARD LAS VEGAS, NEVADA 89146-5146
 PH. (702) 873-7500 FAX (702) 362-2597

nevada CONSULTING ENGINEERS • PLANNERS • LAND SURVEYORS

STREET PLAN AND PROFILE
LONE MOUNTAIN HEIGHTS
OFFSITE ACCESS ROAD

PROJECT NO: 5778-05
 SCALE: 1"=40' HORIZ.
 1"=4' VERT.

DRAWN BY: RES
 DESIGNED BY: KJ
 CHECKED BY: NJ

SEAL
 PROFESSIONAL ENGINEER
 IAN K. KAUFMAN
 CIVIL
 No. 12181
 STATE OF NEVADA

SHEET **552**
 6 OF 8 SHEETS
 DRAWING NO. 1074-4646-A-C