

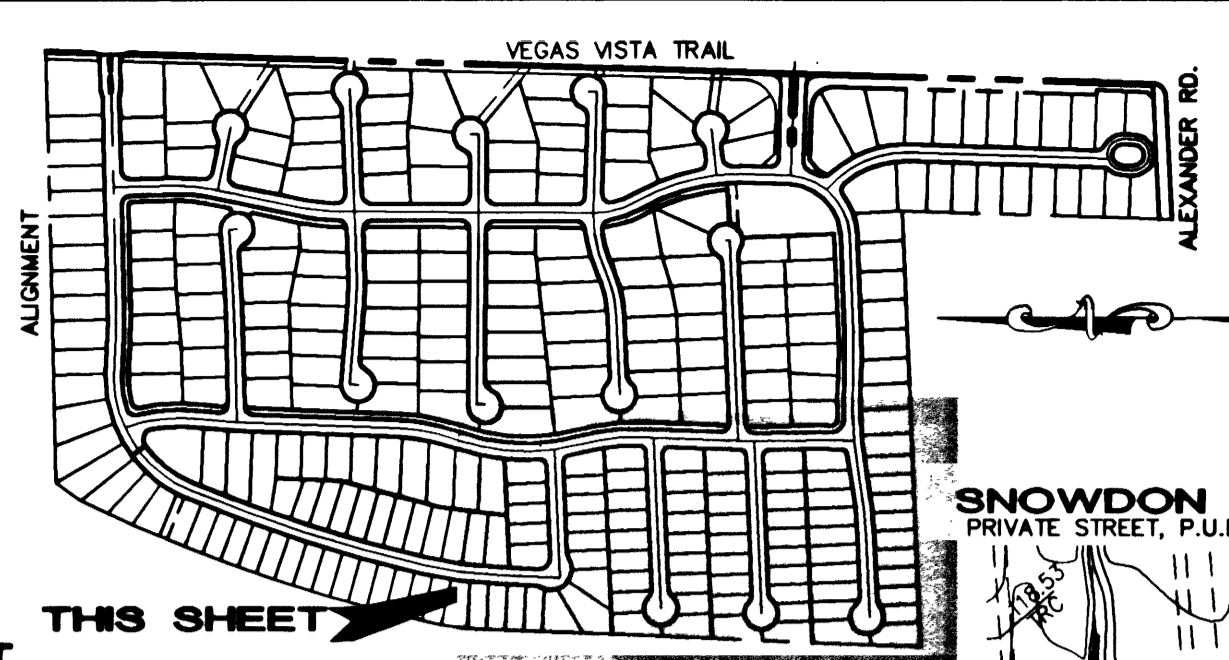
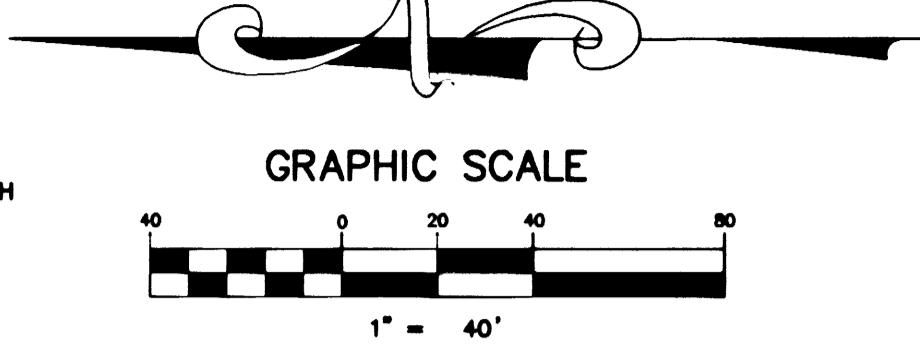
**BENCHMARK**

PROJECT VERTICAL DATUM: NAVD88  
CITY OF LAS VEGAS BENCHMARK 1LV00-45ES  
NAVD88 ELEV: 713.8497 METERS (2342.02 FEET)

RIVET AND PLATE IN TOP OF CURB, NORTHWEST RETURN OF ALEXANDER ROAD AND BUFFALO DRIVE

**BASIS OF BEARINGS:**

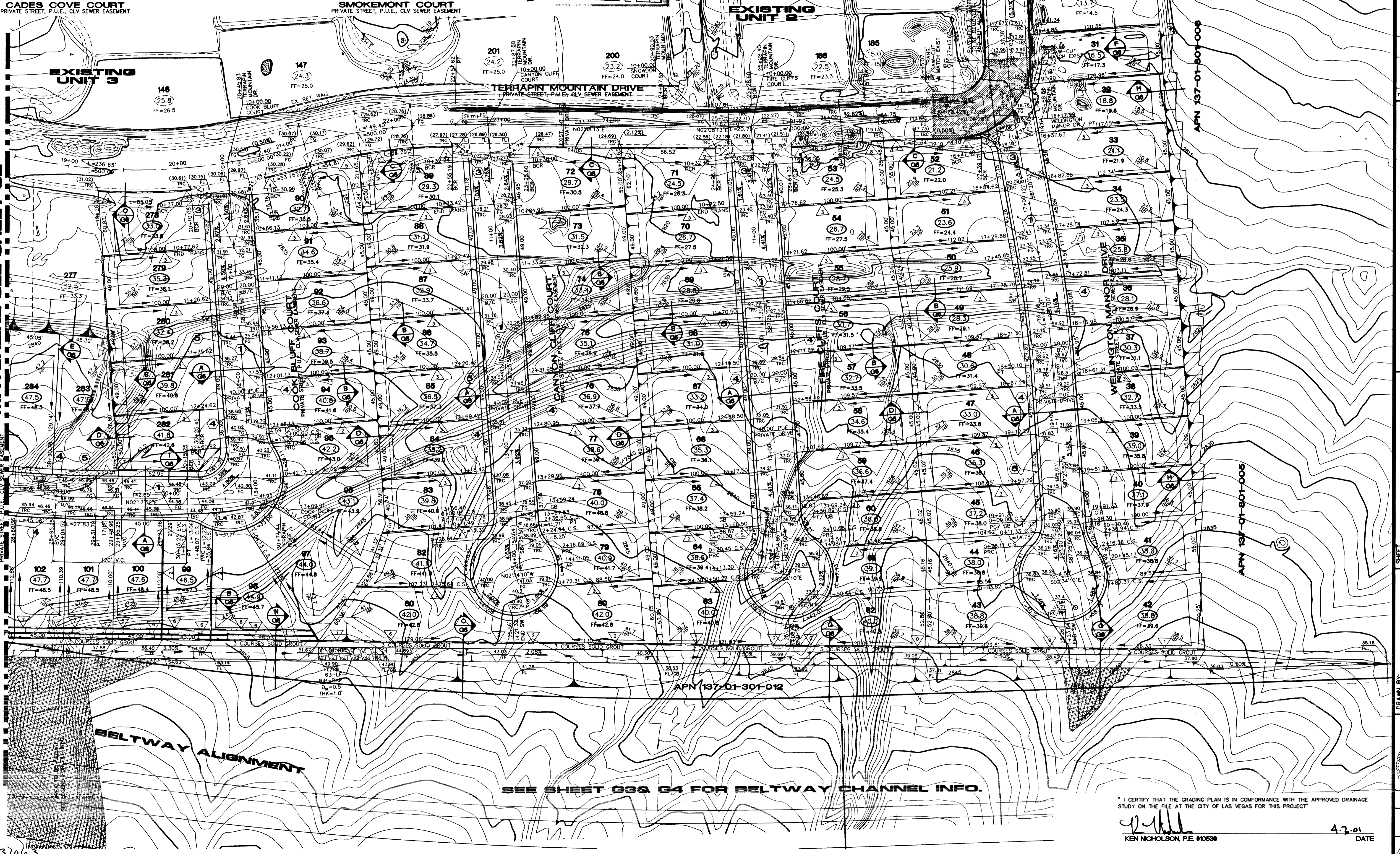
SOUTH 01° 42' 30" WEST, BEING THE CENTERLINE OF VEGAS VISTA TRAIL, NORTH OF ITS INTERSECTION WITH ALEXANDER ROAD, AS SHOWN ON THAT PLAT OF "LONE MOUNTAIN HEIGHTS - UNIT 1", ON FILE IN THE OFFICE OF THE COUNTY RECORDER, CLARK COUNTY, NEVADA, IN BOOK 96 OF PLATS, AT PAGE 81.



Avoid overhead power line contact  
Call before you OVERHEAD 1-702-593-6111  
Avoid cutting underground utility lines. It's costly.  
Call before you Dig 1-800-227-2600

**STREET IMPROVEMENTS:**  
UTILITY LOCATIONS SHOWN HEREON ARE APPROXIMATE ONLY. IT SHALL BE THE CONTRACTOR'S RESPONSIBILITY TO DETERMINE THE EXACT HORIZONTAL AND VERTICAL LOCATION OF ALL EXISTING UNDERGROUND AND OVERHEAD UTILITIES PRIOR TO COMMENCING CONSTRUCTION. NO REPRESENTATION IS MADE THAT ALL EXISTING UTILITIES ARE SHOWN HEREON. THE ENGINEER ASSUMES NO RESPONSIBILITY FOR UTILITIES NOT SHOWN OR UTILITIES NOT SHOWN IN THEIR PROPER LOCATIONS.

- CONSTRUCTION KEY**
- STREET IMPROVEMENTS:**
- 40' WIDE (PRIVATE STREET) = CONSTRUCT 2" AC PAVING OVER 4" TYPE II BASE PER U.S.D.C.C.A. STANDARD DWG. NO. 210.
  - CONSTRUCT 8" WIDE CROSS GUTTER PER U.S.D.C.C.A. STANDARD DRAWING NO. 228.
  - CONSTRUCT SIDEWALK RAMP PER U.S.D.C.C.A. STANDARD DWG. NO. 235 A=8.0', B=8.0' UNLESS OTHERWISE NOTED ON PLANS. CASE I
  - CONSTRUCT "ROLL" CURB PER U.S.D.C.C.A. STANDARD DWG. NO. 217A.
  - CONSTRUCT 5" WIDE CONCRETE SIDEWALK PER U.S.D.C.C.A. STANDARD DRAWING NO. 234.



MATCHLINE SEE SHEET G2

ROBINS AVENUE

BELTWAY ALIGNMENT

37063

SEE SHEET G3& G4 FOR BELTWAY CHANNEL INFO.

I CERTIFY THAT THE GRADING PLAN IS IN CONFORMANCE WITH THE APPROVED DRAINAGE STUDY ON THE FILE AT THE CITY OF LAS VEGAS FOR THIS PROJECT

Ken Nicholson, P.E. #10539  
DATE 4.2.01

7	6	5	4	3	2	1
DATE	REVISION	BY	DATE	REVISION	BY	DATE
<p><b>KB HOME</b> 750 PILOT ROAD, SUITE F LAS VEGAS, NV 89119 (702) 814-2500</p> <p><b>GRADING PLAN</b></p> <p><b>LONE MOUNTAIN HEIGHTS UNIT 6</b></p> <p><b>APN 137-01-801-005</b></p> <p><b>CITY OF LAS VEGAS</b> 2727 SOUTH RAINBOW BOULEVARD LAS VEGAS, NEVADA 89146-5146 PH. (702) 873-7550 FAX (702) 362-2587</p> <p><b>nv</b> nevada CONSULTING ENGINEERS • PLANNERS • LAND SURVEYORS</p>						
DRAWN BY:	DEC. '00	R.L.S.	DESIGNED BY:	DEC. '00	R.L.S.	CHECKED BY:
PROJECT NO:	SCALE:	1"=40'	HORIZ.:	VERT.:	NA	NA
<p>SHEET <b>G1</b> OF 25 SHEETS DRAWING NO. <b>107Y-4646-5</b></p>						

