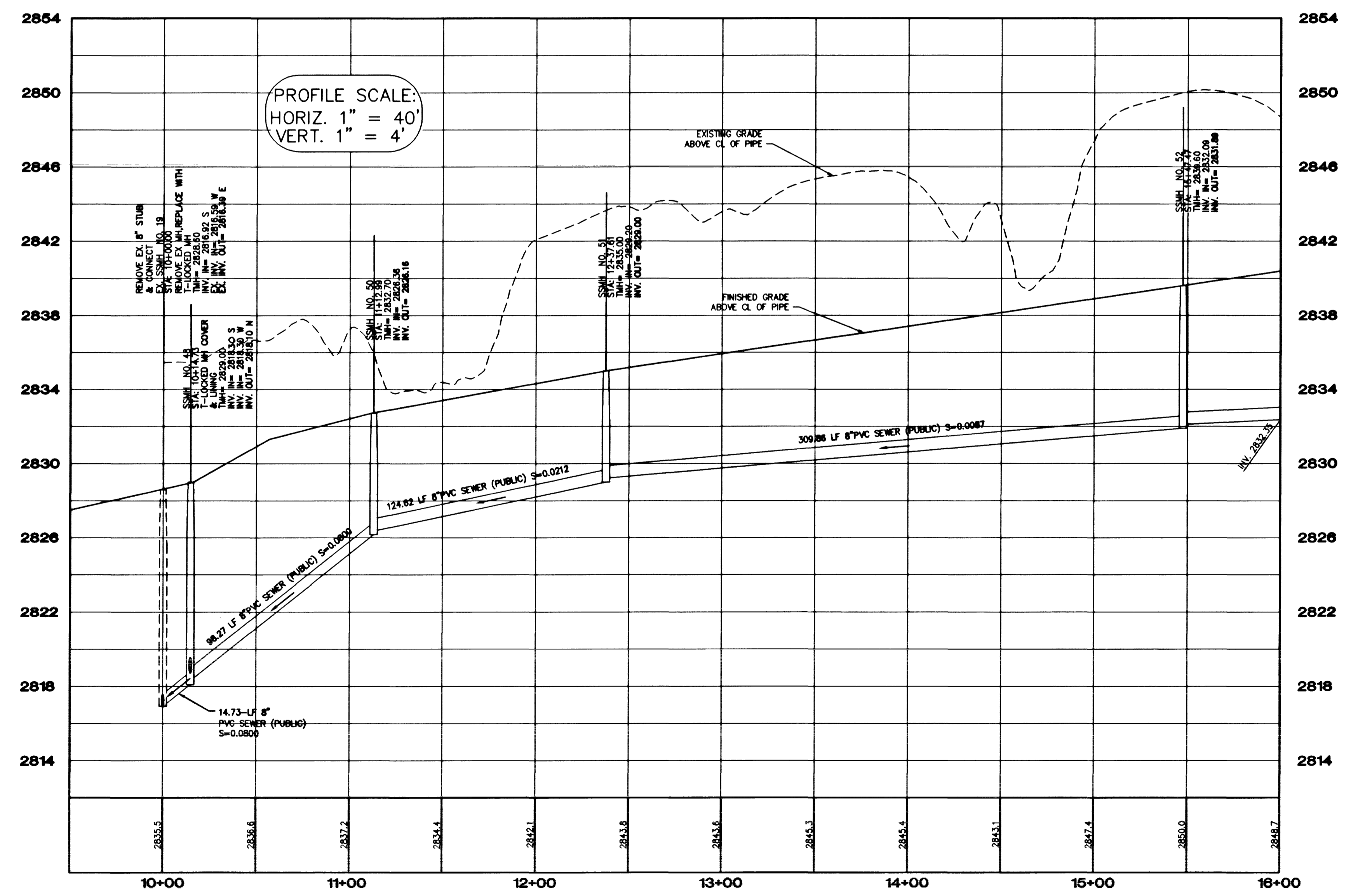


ROBBINS RIDGE DRIVE
 (PRIVATE DRIVE, P.U.E. AND CLV SEWER EASEMENT
 AND PUBLIC DRAINAGE EASEMENT TO BE PRIVATELY MAINTAINED)



NOTE:
 MANHOLES TEN (10') FEET OR DEEPER ARE
 REQUIRED TO HAVE LOCKING MANHOLE COVERS.

NOTE:
 ALL MH STATIONING IS BASED ON SEWER
 LENGTHS FROM MANHOLE TO MANHOLE.
 ALL MANHOLES ARE 48" SIZE MANHOLES
 PER STD.DWG# SD-1.

NOTE: CONTRACTOR SHALL VERIFY HORIZONTAL AND
 VERTICAL LOCATION OF EXISTING UTILITIES AND
 NOTIFY THE DESIGN ENGINEER IMMEDIATELY OF
 ANY DISCREPANCIES PRIOR TO CONSTRUCTION.

BENCHMARK
 PROJECT VERTICAL DATUM: NAVD88
 CITY OF LAS VEGAS BENCHMARK 1LV00-4SE3
 NAVD88 ELEV: 713.8497 METERS (2342.02 FEET)
 RIVET AND PLATE IN TOP OF CURB, NORTHWEST RETURN OF
 ALEXANDER ROAD AND BUFFALO DRIVE

BASIS OF BEARINGS:
 SOUTH 01° 42' 30" WEST, BEING THE CENTERLINE OF VEGAS VISTA TRAIL, NORTH
 OF ITS INTERSECTION WITH ALEXANDER ROAD, AS SHOWN ON THAT PLAT OF
 "LONE MOUNTAIN HEIGHTS - UNIT 1", ON FILE IN THE OFFICE OF THE COUNTY
 RECORDER, CLARK COUNTY, NEVADA, IN BOOK 96 OF PLATS, AT PAGE 81.

Avoid overhead power
lines contact

Avoid cutting underground
utility lines. It's costly.

Call
before you
OVERHEAD
1-702-593-6111

Call
before you
Dig
1-800-227-2600

KB HOME 750 PILOT ROAD, SUITE F LAS VEGAS, NEVADA 89119 (702) 814-2500		MTI nevada 2727 SOUTH RAINBOW BOULEVARD LAS VEGAS, NEVADA 89146-5146 PH. (702) 873-7550 FAX (702) 362-2597 CONSULTING ENGINEERS • PLANNERS • LAND SURVEYORS	
SEWER PLAN AND PROFILE ROBBINS RIDGE DRIVE SHEET 1		LONE MOUNTAIN HEIGHTS UNIT 6	
DRAWN BY: NOS	DESIGNED BY: JUS	CHECKED BY: JUS	PROJECT NO: 5049
DATE: 1-05-01	DATE: 1-05-01	SCALE: 1"=40' HORIZ. 1"=4' VERT.	SHEET SS1 19 OF 25 SHEETS DRAWING NO. 3074-4646-6

