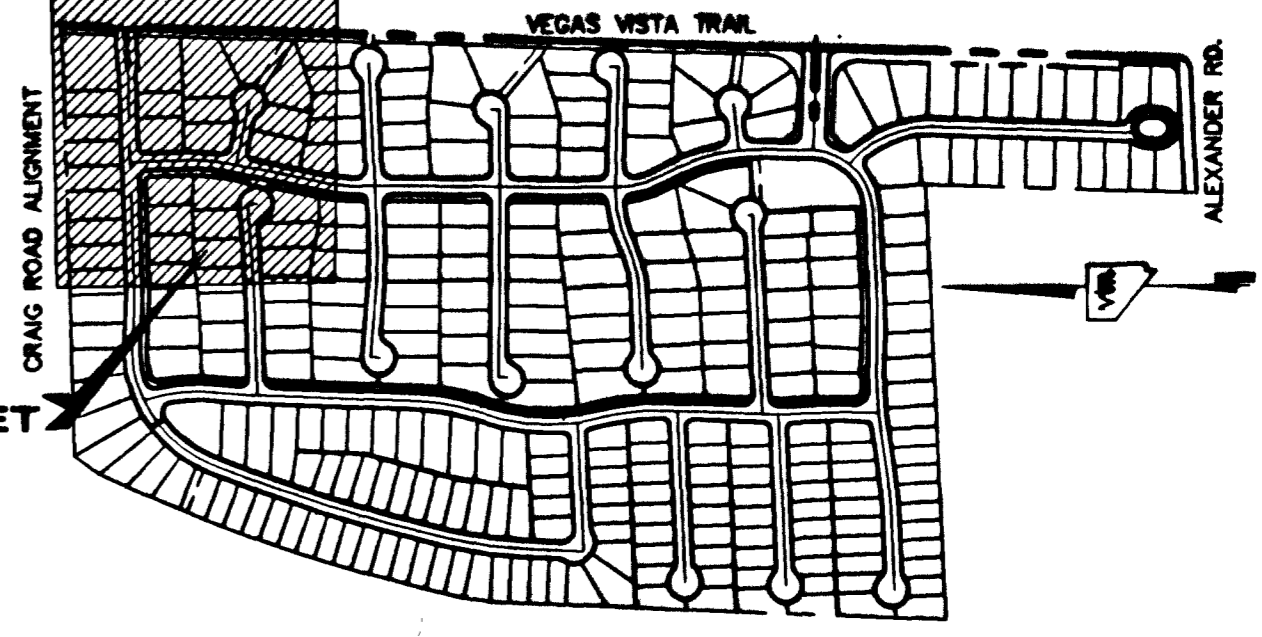
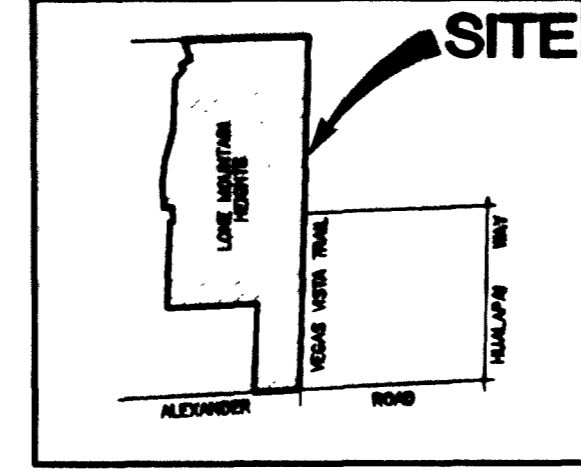


# ASBULLI

## VEGAS VISTA TRAIL

REFER TO UNIT 1 IMPROVEMENT PLANS PER VIN NEVADA  
CLY DWG # 3071-4636-05

EX. SSM #25  
PER MONUMENT  
LONE MOUNTAIN  
OFFSITE SEWER  
CLY DWG #3071-4636-05  
INV. = 2779.07  
N 12178.6492  
E 13478.7272



### VICINITY MAP

### FIRE FLOW CALCULATIONS

FIRE FLOW REQUIREMENT IS 1,750 GALLONS PER MINUTE  
AT 20 PSI RESIDUAL PRESSURE.

BASED ON:

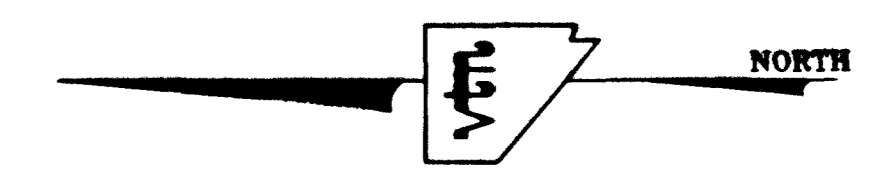
SQUARE FOOTAGE:	2,633 SQ. FT.
LARGEST AREA BETWEEN 4'-INCH AREA SEPARATION WALLS:	2,633 SQ. FT.
BUILDING HEIGHT:	FEET
NUMBER OF STORIES:	2 FLOOR
TYPE OF CONSTRUCTION:	Y.M.
OCCUPANCY:	SFR
FULL AUTOMATIC FIRE SPRINKLER SYSTEM:	

REVIEWED BY: *[Signature]*  
DATE: 3/13/02

### LAS VEGAS VALLEY WATER DISTRICT STANDARD NOTES

- LVVWD PROJECT # 20001
- No work shall begin until the water plans have been released for construction by the LVVWD. Following water plan approval, 48 hours notice shall be given to the LVVWD Communication Support Center (258-7171) prior to the start of construction. Notice must be given by 2:00 p.m. the business day prior to a LVVWD inspection. When requesting inspections, please refer to the Project # identified above.
  - All work shall conform to the LVVWD's Standard Plates, Drawings, and Specifications and to the Uniform Design and Construction Standards for Water Distribution Systems (UDACS), latest edition.
  - All work, except as modified by these plans or by Note 2, shall be done in accordance with the most current draft or edition of the Uniform Standard Specifications for Public Works Construction Office Improvement, Clark County Area.
  - A single pipe material shall be used throughout the project unless otherwise approved by the LVVWD.
  - All service laterals two (2) inches in diameter and smaller shall be copper tubing with LVVWD approved service saddles.
  - All water meter boxes shall be located outside of driveway areas.
  - All valves shall be located outside of driveways, valley and curb gutters.
  - The following requirements must be met in the event a water line and sanitary or storm sewer line cross:
    - A minimum eighteen (18) inch vertical separation (outside to outside) must be maintained when the water line is installed over the sanitary or storm sewer line. If the vertical separation cannot be maintained or the water line must be placed under the sanitary or storm sewer line, the sanitary or storm sewer line must be constructed with one of the following or, as shown on these plans:
      - Potable Water supply quality material,
      - Encasement with four (4) inch concrete (minimum)
      - Sleeving with potable water supply quality pipe.
    - Each provision must extend along the sanitary or storm sewer, on either side of the main, a minimum 10 foot distance perpendicular to the water main exterior.
  - Warning tape shall be required over all mains, all six (6) inch diameter and larger service laterals, and any service lateral not installed perpendicular to the main in accordance with Standard Plate No. 27.
  - All water facilities shall be filled, disinfected, pressure tested, flushed, and an acceptable water sample obtained, prior to connection to the LVVWD's distribution system.
  - The contractor must obtain all meters two (2) inches and smaller from LVVWD Central Stores. Telephone 258-3152 forty-eight (48) hours prior to pickup.
  - Construction may interrupt service, with LVVWD approval and proper notification, between the hours of 10p.m and 6a.m., Sunday through Thursday. Circumstances may require temporary service feeds be installed, without LVVWD reimbursement. Any temporary service feed must have prior LVVWD approval.
  - All water facility construction materials used must be as listed on the LVVWD's Pre-Approved Materials and Manufacturers Listing for New Facilities, latest revision, or specifically approved on these plans.
- Reduced Pressure Principle Assembly (RPPA)**  
Applied Reduced Pressure Assembly (ARPA) shall be installed per the UDACS Plate No. 11A. No water shall be taken from a service requiring backflow prevention until the reduced pressure principle assembly has been successfully tested by the LVVWD. ANY BLOCK WALL OR OTHER FENCE MATERIAL SHALL BE DESIGNED AND CONSTRUCTED AROUND THE OUTSIDE OF THE EASEMENT(S) TO ALLOW THE DISTRICT DIRECT ACCESS FROM THE ADJACENT RIGHT-OF-WAY.

### KEY MAP



### ESTIMATE OF QUANTITIES

WATER

1" FIRE HYDRANT ASSEMBLY.....	3 EA.
(INCLUDES 8"x6" TEE & 6"GV) PER UDACS PLATE 7	
8" GATE VALVE.....	2 EA.
8" X8" REDUCER.....	2 EA.
8" TEE.....	1 EA.
CAP W/ 2" B.O PER UDACS PLATE 4, 2 EA.	
1" COPPER SERVICE W/ 3/4" METER & 1" RPPA (UDACS plate 1D).....	1 EA.
1" COPPER SERVICE W/ 5/8" METER (UDACS plate 1D).....	4EA.
6" WATER MAIN.....	281 LF.
8" WATER MAIN.....	772 LF.
* 1" COPPER SERVICE W/ 3/4" METER (UDACS PLATE 1D).....	7 EA.

### SEWER CONTRIBUTION

AVERAGE FLOW = 0.0125 MGD  
PEAK FLOW = 0.0425 MGD

SEWER	
8" STANDARD MANHOLE..... (PUBLIC)	5 EA.
8" SEWER MAIN..... (PUBLIC)	874 LF.
4" SEWER LATERALS..... (PRIVATE)	715 LF.
BWV BACKWATER VALVES..... (PRIVATE)	22 EA.

### SEWER CONNECTION NOTE:

ONE OR MORE SEGMENTS OF THE DOWNSTREAM SEWER SYSTEM THAT WILL SERVE THIS PROJECT HAS NOT BEEN COMPLETED AND/OR ACCEPTED FOR MAINTENANCE BY THE CITY OF LAS VEGAS. ANY WORK DONE ON THIS PROJECT PRIOR TO THE COMPLETION AND/OR ACCEPTANCE OF THE DOWNSTREAM SEWER SYSTEM(S) SHALL BE DONE AT THE DEVELOPER'S OWN RISK. THE CITY OF LAS VEGAS RESERVES THE RIGHT TO PREVENT THE PHYSICAL CONNECTION OF THIS PROJECT INTO THE DOWNSTREAM SEWER SYSTEM UNTIL ALL SEGMENTS HAVE BEEN COMPLETED AND ACCEPTED FOR MAINTENANCE, OR UNTIL SUCH TIME AS THEY ARE DEEMED AVAILABLE FOR SERVICE.

### LEGEND

- R1-1 "STOP" SIGN & ..... 1 EA.
  - (2) D3 "STREET NAME" SIGNS..... 2 EA.
  - (2) D3 "STREET NAME" SIGNS..... 4 EA.
- PROJECT NAME: Lone Mountain Heights  
Unit 4 - P. 04  
This project water plan complies with the Las Vegas Valley Water District's technical requirements. However, this water plan is NOT APPROVED FOR CONSTRUCTION  
at this time and this signature does not provide or imply a water commitment.  
LVVWD #52 DATE 3/13/02

### APPROVAL:

*[Signature]* 3/13/02  
LAS VEGAS VALLEY WATER DISTRICT DATE

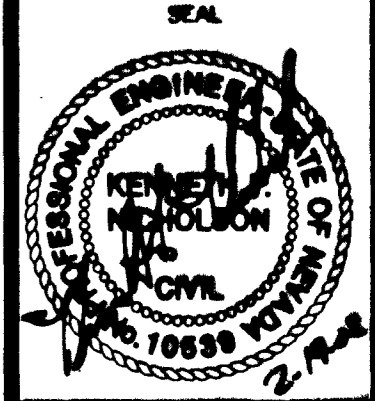
NEVADA POWER COMPANY DATE  
NEVADA POWER COMPANY APPROVAL IS ONLY FOR THE PLACEMENT AND CLEARANCE OF STREET LIGHT AND SIGNAL LIGHT INSTALLATION.

CITY OF LAS VEGAS  
727 SOUTH RAINBOW BOULEVARD LAS VEGAS, NEVADA 89146-5146  
PH. (702) 873-7550 FAX (702) 382-2897  
LAS VEGAS, NV 89119  
702) 814-2500

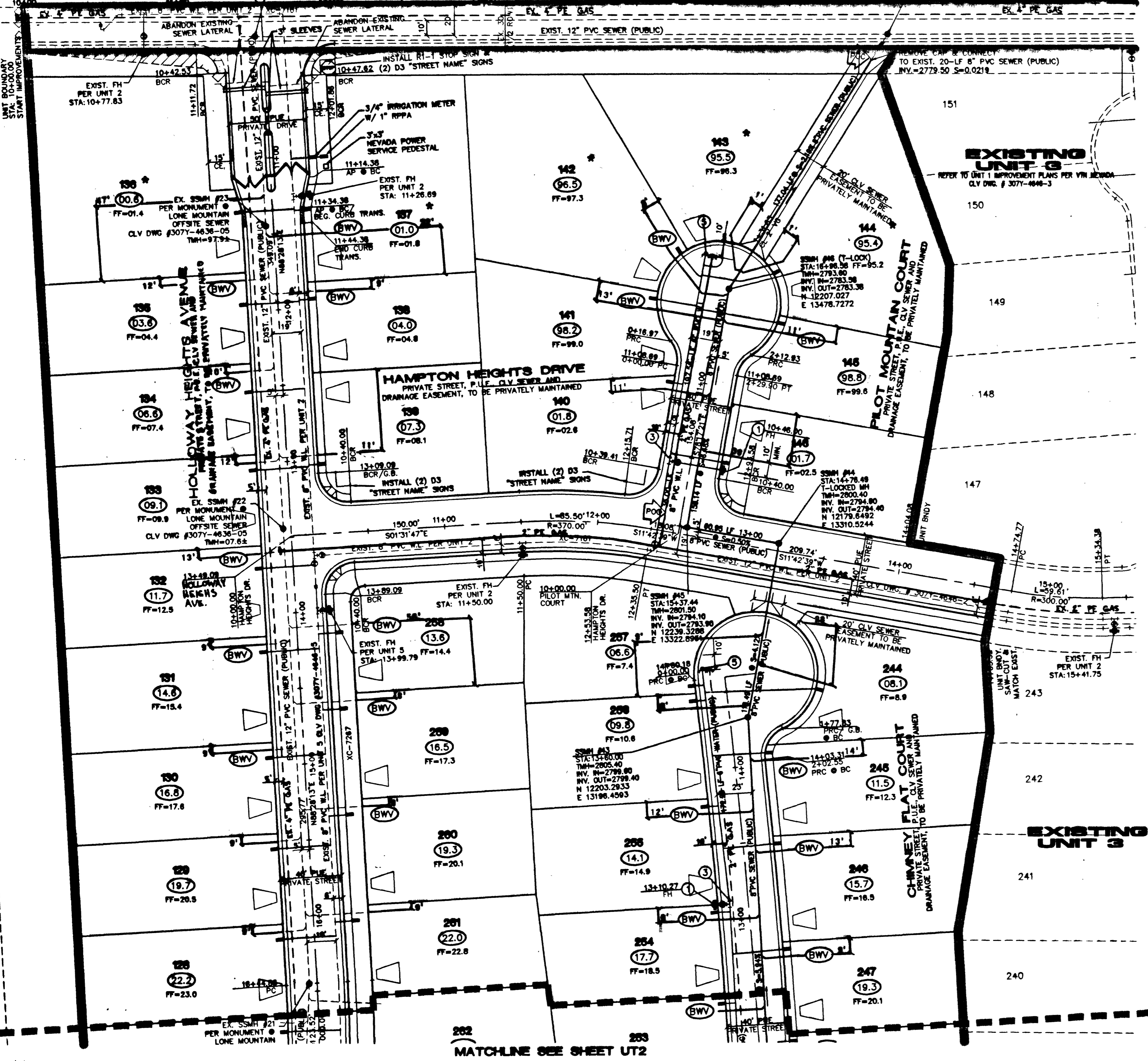
KB HOME  
750 PILOT ROAD, SUITE F  
LAS VEGAS, NV 89119  
(702) 814-2500

ASBULLI  
MASTER UTILITY PLAN

SHEET  
MAY '01  
DESIGNED BY:  
CHECKED BY:  
PROJECT NO.  
3071-4636-05



SHEET  
51  
8 OF 18 SHEETS  
DRAWING NO.  
3071-4636-05



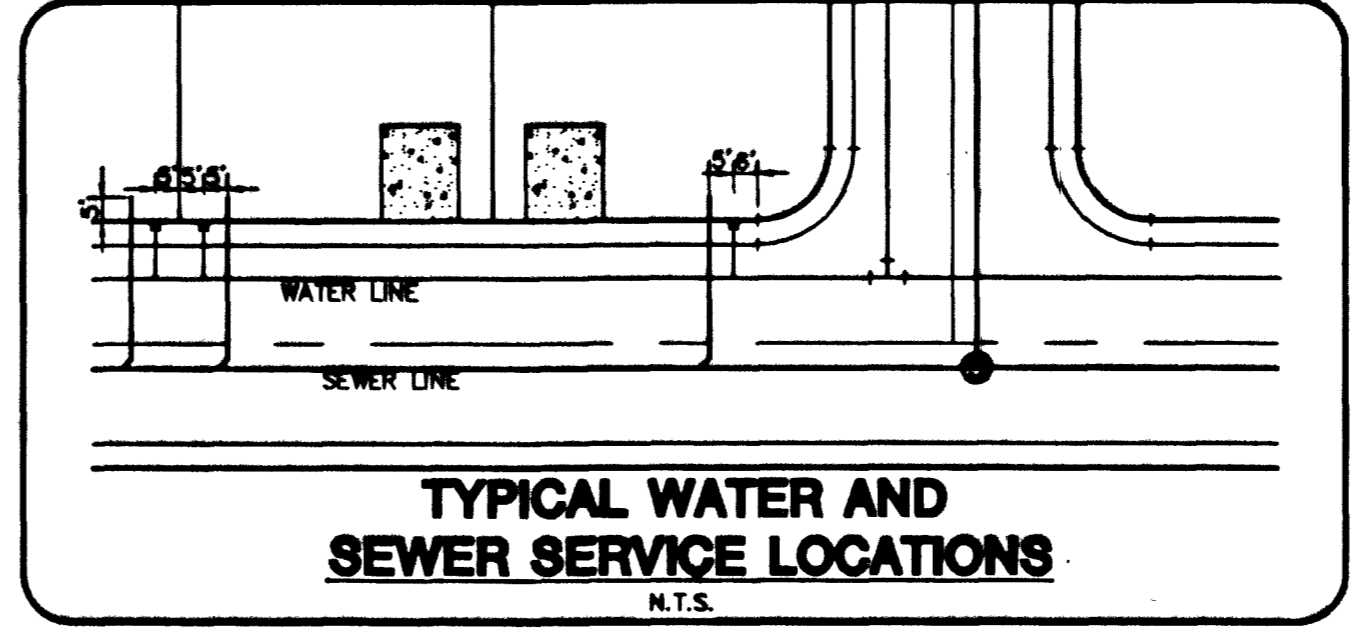
SERVICE LATERALS FOR 3/4" IRRIGATION MTR. IN C.E. & LOTS 129 THROUGH 138 & LOTS 256 THROUGH 261 WILL BE TAPPED ON EXISTING MAIN BY OWNER'S CONTRACTOR UNDER DIRECTION OF THE LVVWD.

Call before you OVERHEAD  
1-702-593-6111

Call before you Dig  
1-800-227-2600

NOTE:  
ALL MH STATIONING IS BASED ON SEWER LENGTHS FROM MANHOLE TO MANHOLE.  
ALL MANHOLES ARE 48" SIZE MANHOLES PER STD.DWG# SD-1.

NOTE: CONTRACTOR SHALL VERIFY HORIZONTAL AND VERTICAL LOCATION OF EXISTING UTILITIES AND NOTIFY THE DESIGN ENGINEER IMMEDIATELY OF ANY DISCREPANCIES PRIOR TO CONSTRUCTION.



**BENCHMARK**  
PROJECT VERTICAL DATUM: NAVD83  
CITY OF LAS VEGAS BENCHMARK 11V00-45E3  
NAVD83 ELEV: 713.8467 METERS (2342.02 FEET)

INSET AND PLATE IN TOP OF CURB, NORTHWEST RETURN OF ALEXANDER ROAD AND BUFFALO DRIVE

**BASIS OF BEARINGS:**  
SOUTH 01° 42' 30" WEST, BEING THE CENTERLINE OF VEGAS VISTA TRAIL, NORTH OF ITS INTERSECTION WITH ALEXANDER ROAD, AS SHOWN ON THAT PLAN OF LONE MOUNTAIN HEIGHTS - UNIT 1, ON FILE IN THE OFFICE OF THE COUNTY RECORDER, CLARK COUNTY, NEVADA, IN BOOK 86 OF PLATS, AT PAGE 61.