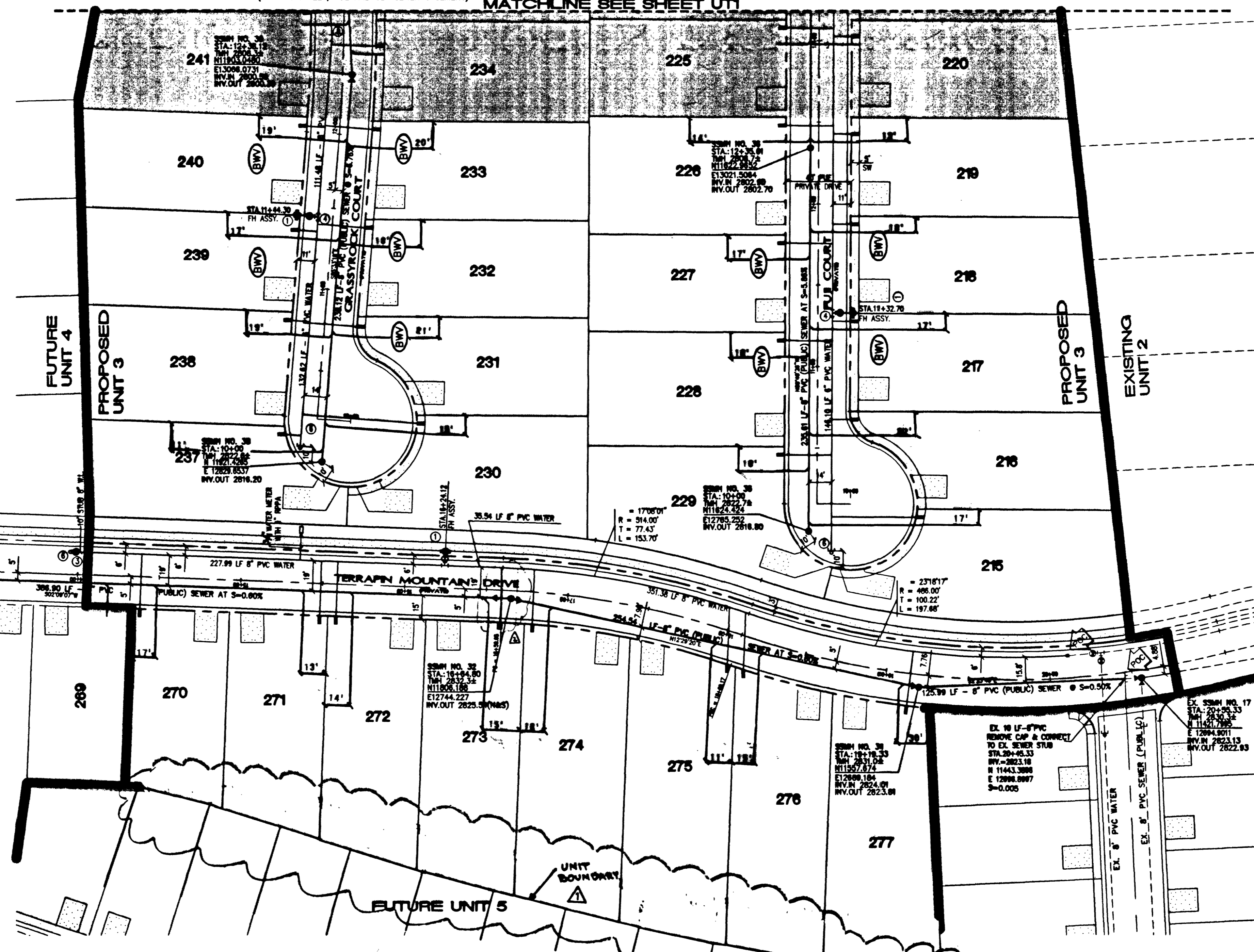
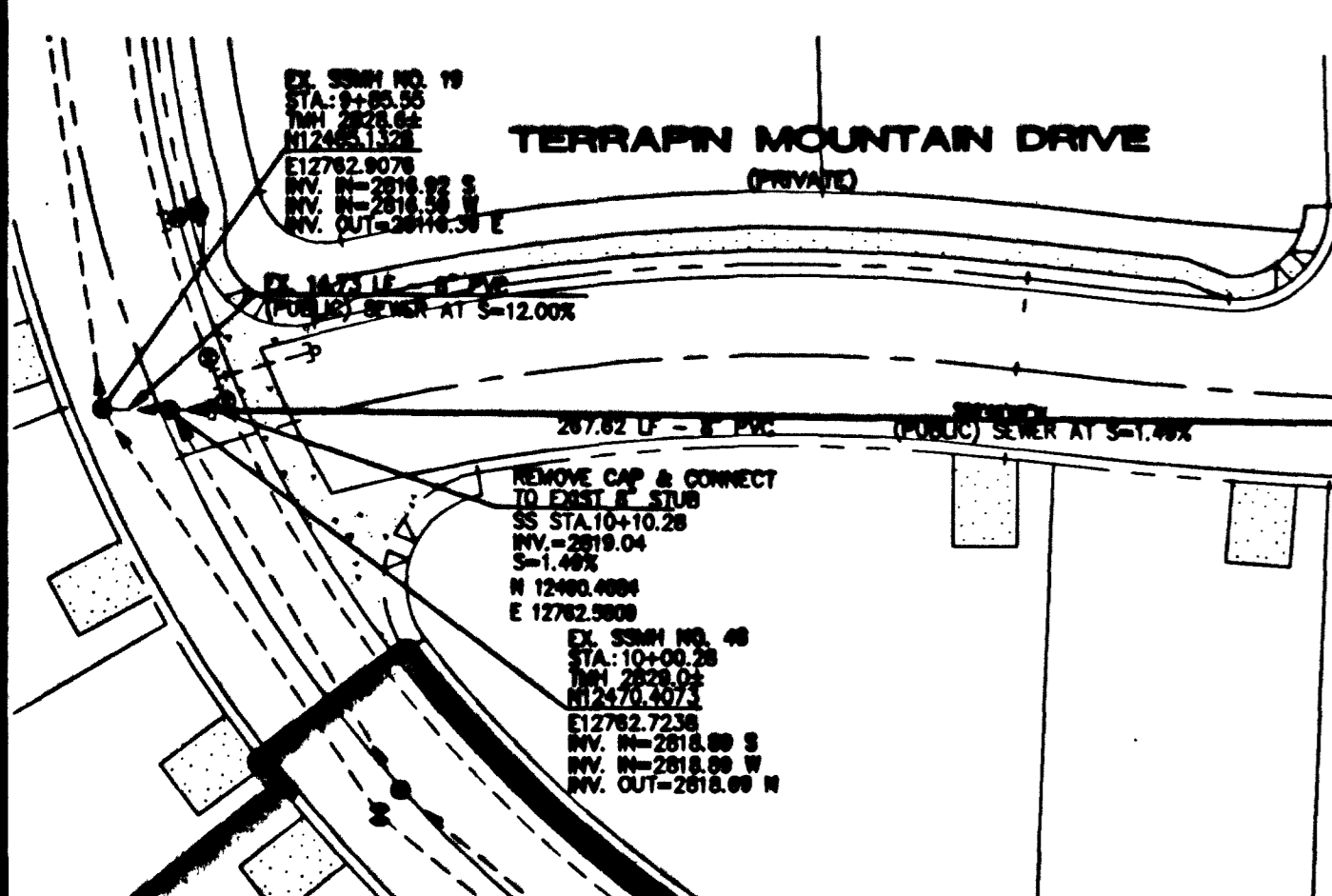
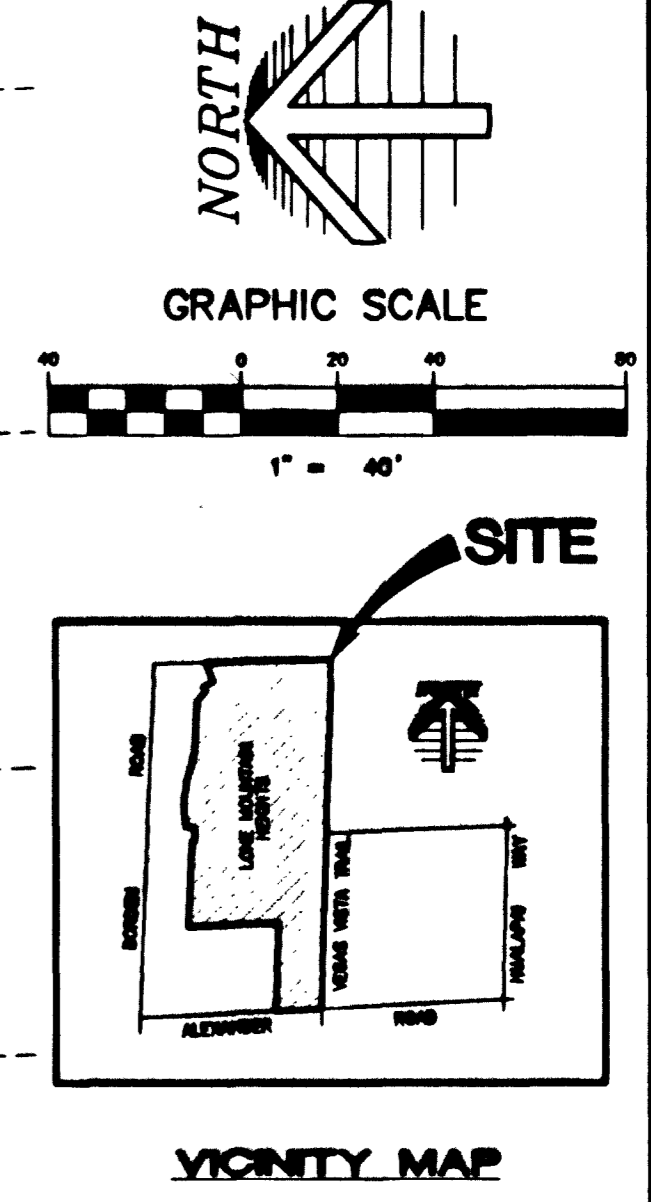


# ASBUILT

GRASSY ROCK COURT (PRIVATE STREET, PUE AND CLV SEWER EASEMENT) MATCHLINE SEE SHEET UT1 FUJI COURT (PRIVATE STREET, PUE AND CLV SEWER EASEMENT)



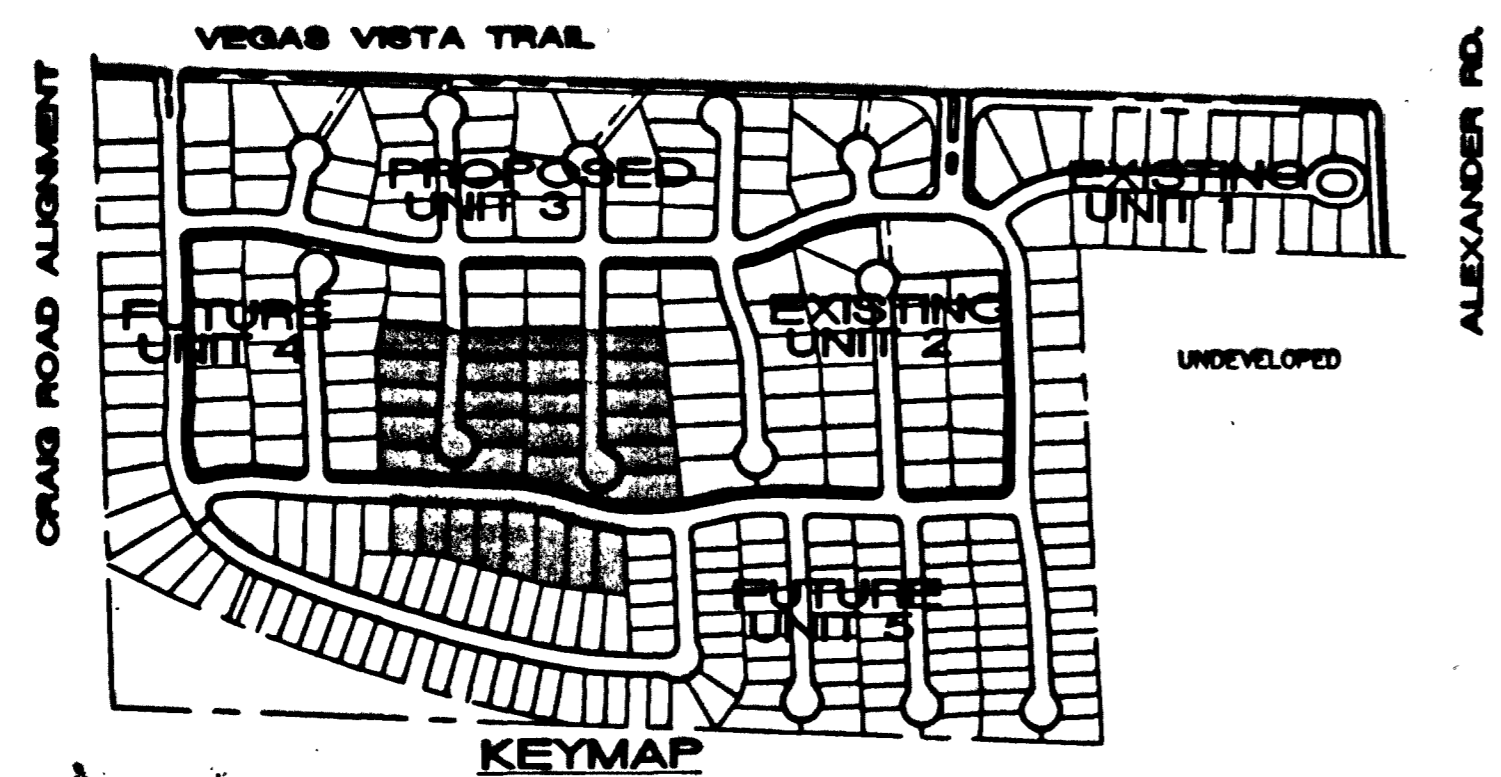
**BENCHMARK**  
PROJECT VERTICAL DATUM: NAVD83  
CITY OF LAS VEGAS BENCHMARK 11400-4523  
NAVD83 ELEV: 713.8487 METERS (2342.02 FEET)

INSET AND PLATE IN TOP OF CURB, NORTHWEST RETURN OF ALEXANDER ROAD AND BUFFALO DRIVE

**BASIS OF BEARINGS:**  
SOUTH 01° 42' 30" WEST, BEING THE CENTERLINE OF VEGAS VISTA TRAIL, NORTH OF ITS INTERSECTION WITH ALEXANDER ROAD, AS SHOWN ON THAT PLAT OF "LONE MOUNTAIN HEIGHTS - UNIT 1", ON FILE IN THE OFFICE OF THE COUNTY RECORDER, CLARK COUNTY, NEVADA, IN BOOK 98 OF PLATS, AT PAGE 81.

Avoid overhead power line contact  
Avoid cutting underground utility lines. It's costly.

Call before you OVERHEAD 1-702-593-6111  
Call before you Dig 1-800-277-2600



**REDUCED PRESSURE PRINCIPLE ASSEMBLY**  
APPROVED REDUCED PRESSURE PRINCIPLE ASSEMBLY(S) SHALL BE INSTALLED PER THE UDACS PLATE NO. 11A. NO WATER SHALL BE TAKEN FROM A SERVICE REQUIRING BACKFLOW PREVENTION UNTIL THE REDUCED PRESSURE PRINCIPLE ASSEMBLY HAS BEEN SUCCESSFULLY TESTED BY THE LVWD. ANY BLOCK WALL OR OTHER FENCE MATERIAL SHALL BE DESIGNED AND CONSTRUCTED AROUND THE OUTSIDE OF THE EASEMENT(S) TO ALLOW THE DISTRICT DIRECT ACCESS FROM THE ADJACENT RIGHT-OF-WAY. EASEMENT SHALL BE CLEARLY MARKED OR STAKED PRIOR TO THE START OF CONSTRUCTION.

**SEWER CONNECTION NOTE:**  
ONE OR MORE SEGMENTS OF THE DOWNSTREAM SEWER SYSTEM THAT WILL SERVE THIS PROJECT HAS NOT BEEN COMPLETED AND/OR ACCEPTED FOR MAINTENANCE BY THE CITY OF LAS VEGAS. ANY WORK DONE ON THIS PROJECT PRIOR TO THE COMPLETION AND/OR ACCEPTANCE OF THE DOWN STREAM SEWER SYSTEM(S) SHALL BE DONE AT THE DEVELOPER'S OWN RISK. THE CITY OF LAS VEGAS RESERVES THE RIGHT TO PREVENT THE PHYSICAL CONNECTION OF THIS PROJECT INTO THE DOWNSTREAM SEWER SYSTEM UNTIL ALL SEGMENTS HAVE BEEN COMPLETED AND ACCEPTED FOR MAINTENANCE, OR UNTIL SUCH TIME AS THEY ARE DEEMED AVAILABLE FOR SERVICE.

**ESTIMATE OF QUANTITIES**

**WATER**

① FIRE HYDRANT ASSM. (PER UDACS PLATE NO. 7) @ EA. (INCLUDES 8" x 8" TEE & 8" CV)	0 EA.
② 8" GATE VALVE.....	1 EA.
③ 8" x 8" REDUCER.....	4 EA.
④ 8" TEE.....	0 EA.
⑤ CAP W/ 2" B. O. (PER UDACS PLATE NO. 4) 4 EA.	4 EA.
⑥ 8" x 3" CROSS.....	0 EA.
⑦ 8" 11 1/4" ELBOW.....	1 EA.
⑧ 8" 22 1/2" ELBOW.....	0 EA.
⑨ 8" 45" ELBOW.....	0 EA.
⑩ 8" 90" ELBOW.....	0 EA.
⑪ 8" CROSS.....	0 EA.
⑫ 6" WATER MAIN DIP.....	29 LF.
⑬ 6" WATER MAIN PVC.....	505 LF.
⑭ 6" WATER MAIN PVC.....	1458 LF.
⑮ 5/8" WATER METER W/ 1" TYPE K COPPER 48 EA. SERVICE PER UDACS PLATE NO. 18	48 EA.
⑯ 3/4" WATER METER W/ 1" TYPE K COPPER 7 EA. SERVICE PER UDACS PLATE NO. 1D	7 EA.
⑰ 1" WATER METER W/ 1" TYPE K COPPER 0 EA. SERVICE PER UDACS PLATE NO. 1D	0 EA.
⑱ 1" RPPA PER UDACS PLATE NO. 11A 1 EA.	1 EA.

**CONDITIONAL APPROVAL OF VALVED OUTLET (6" AND LARGER)**

THE WATER PLANS SHOW ONE OR MORE VALVED OUTLETS EXTENDING OUT OF PAVED AREAS. INSTALLATION OF THESE OUTLETS IS ACCEPTABLE, HOWEVER, IF THE OUTLETS ARE INCORRECTLY LOCATED OR NOT USED FOR ANY REASON WHEN THE PROPERTY IS ACTUALLY DEVELOPED, THE DEVELOPER SHALL ABANDON THE OUTLETS AT THE CONNECTION TO THE ACTIVE MAIN IN ACCORDANCE WITH THE DISTRICT'S STANDARDS AND AT THE DEVELOPER'S EXPENSE.  
ESN. 037 6/23/97

**SEWER CONTRIBUTION**  
AVERAGE FLOW = 0.0135 MG/D  
PEAK FLOW = 0.0472 MG/D

**SEWER**

● STANDARD MANHOLE.....	9 EA.
● 8" SEWER MAIN..... (PUBLIC)	2891 LF.
● 4" SEWER LATERALS..... (PUBLIC)	1,200 LF.
● 4" SEWER WYES..... (PUBLIC)	54 EA.
● (BW) BACKWATER VALVES..... (PUBLIC)	29 EA.

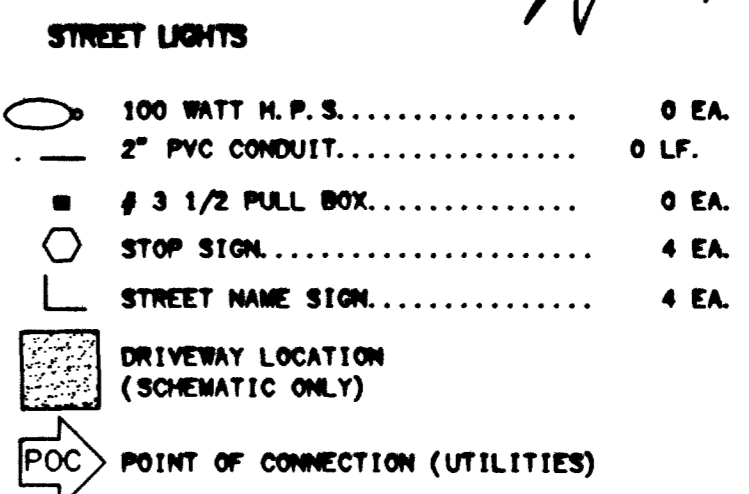
NOTE: CONTRACTOR SHALL VERIFY HORIZONTAL AND VERTICAL LOCATION OF EXISTING UTILITIES AND NOTIFY THE DESIGN ENGINEER IMMEDIATELY OF ANY DISCREPANCIES PRIOR TO CONSTRUCTION.

**FIRE FLOW CALCULATIONS**  
FIRE FLOW REQUIREMENT IS 1,250 GALLONS PER MINUTE AT 20 PSI RESIDUAL PRESSURE.

BASED ON:

SQUARE FOOTAGE:	2,833 SQ. FT.
LARGEST AREA BETWEEN 4-HOUR AREA SEPARATION WALLS:	2,833 SQ. FT.
BUILDING HEIGHT:	FEET
NUMBER OF STORIES:	2 FLOOR
TYPE OF CONSTRUCTION:	V.M.
OCCUPANCY:	RES.
FULL AUTOMATIC FIRE SPRINKLER SYSTEM:	NO

REVIEWED BY: [Signature]  
DATE: 1/29/11



**APPROVAL:**  
[Signature]  
LAS VEGAS VALLEY WATER DISTRICT  
DATE: 3/19/11

KAUFMAN AND BROAD  
750 PILOT ROAD, SUITE 7  
LAS VEGAS, NEVADA 89119  
(702) 614-2500

Asbuilt  
UTILITY PLAN

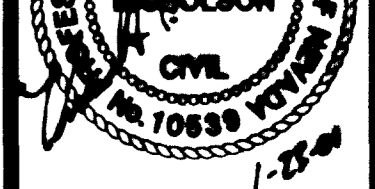
SHEET

10-13-09

DESIGNED BY: [Signature]

CHECKED BY: [Signature]

PROJECT NO: 3071-4646-3



SHEET  
UT2  
OF 17 SHEETS  
DRAWING NO.  
3071-4646-3

LONE MOUNTAIN HEIGHTS  
UNIT 3

10-13-09

SCALE: 1"=40' HORZ. VERT.

PROJECT NO: 3071-4646-3

DATE: 3/19/11

DATE: 3/19/11

DATE: 3/19/11

DATE: 3/19/11