

HAMPTON HEIGHTS DRIVE
 (PRIVATE STREET, PUE AND CLV SEWER EASEMENT
 AND PUBLIC DRAINAGE EASEMENT TO BE PRIVATELY MAINTAINED)

PROFILE
 SCALE: 1"=40' HORIZ.
 1"=4' VERT.

- WATER**
- ① FIRE HYDRANT ASSEMBLY..... 5 EA.
 (INCLUDES 8"x6" TEE & 6"GV) PER UDACS PLATE 7
 - ② 6" GATE VALVE..... 4 EA.
 - ③ 8" GATE VALVE..... 14 EA.
 - ④ 8"x6" REDUCER..... 4 EA.
 - ⑤ 8" TEE..... 4 EA.
 - ⑥ CAP W/ 2" B.O PER UDACS PLATE 4
 - ⑦ 8"x3" CROSS..... 0 EA.
 - ⑧ 8" 1 1/4" ELBOW..... 0 EA.
 - ⑨ 8" 22 1/2" ELBOW..... 0 EA.
 - ⑩ 8" 45" ELBOW..... 0 EA.
 - ⑪ 8" 90" ELBOW..... 1 EA.
 - ⑫ 8" CROSS..... 3 EA.
 - ⑬ 8" x 6" TEE..... 1 EA.
 - ⑭ 1" COPPER SERVICE W/ 5/8" METER
 (UDACS PLATE 18)..... 40 EA.
 - ⑮ 1" COPPER SERVICE W/ 3/4" METER
 (UDACS PLATE 1D)..... 4 EA.
 - ⑯ 6" WATER MAIN..... 423 LF.
 - ⑰ 8" WATER MAIN..... 3960 LF.

PROJECT NAME: Lone Mountain Heights Unit 2
 This project water plan complies with the Las Vegas Valley Water District's technical requirements. However, this water plan is
NOT APPROVED FOR CONSTRUCTION
 at this time and this signature does not provide or imply a water commitment.
Gary Lang 12/07/00
 L.V.W.D. DATE
 #52

BENCHMARK
 PROJECT VERTICAL DATUM: NAVD88
 CITY OF LAS VEGAS BENCHMARK 1LV00-4SES
 NAVD88 ELEV: 713.8497 METERS (2342.02 FEET)
 RIVET AND PLATE IN TOP OF CURB, NORTHWEST RETURN OF
 ALEXANDER ROAD AND BUFFALO DRIVE

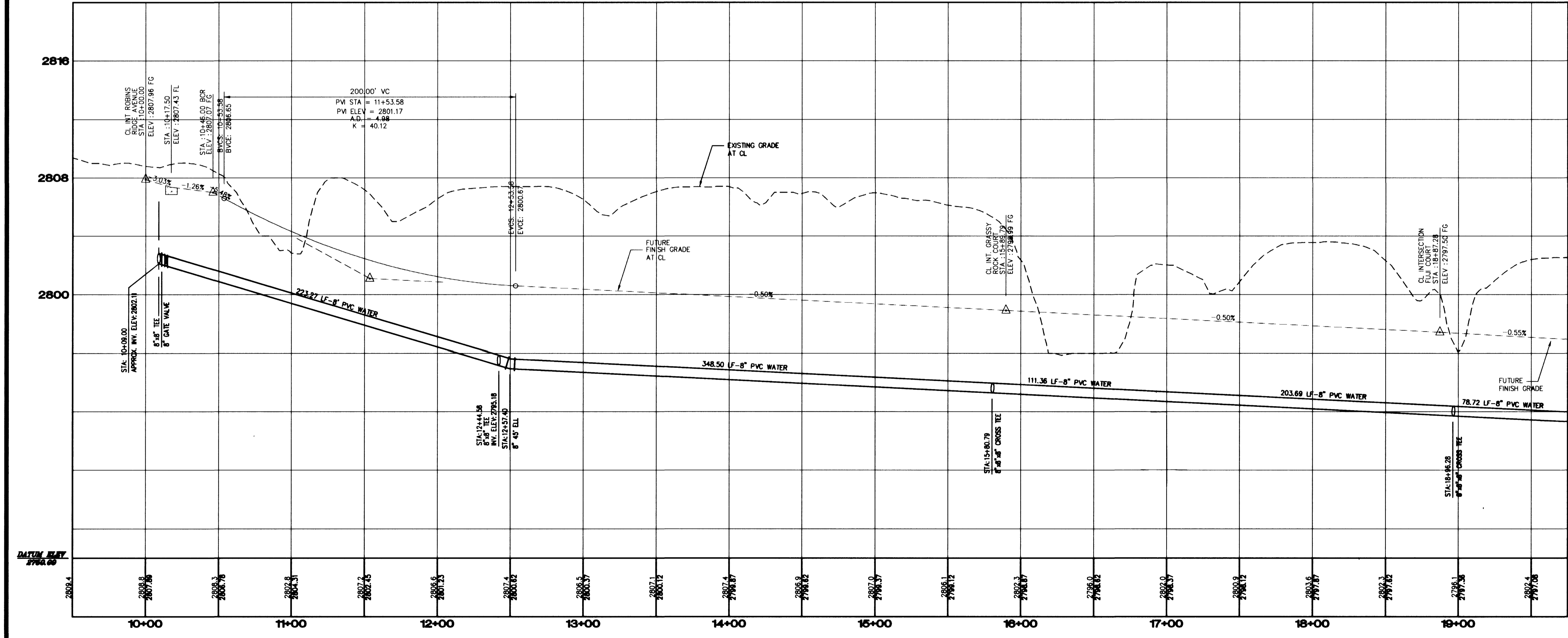
BASIS OF BEARINGS:
 NORTH 87° 08' 14" BEING THE BEARING OF THE SOUTH LINE OF THE
 SOUTHEAST QUARTER (SE 1/4) OF THE SOUTHWEST QUARTER (SW 1/4) OF
 SECTION 1, TOWNSHIP 20 SOUTH, RANGE 59 EAST, AS SHOWN ON A RECORD
 OF SURVEY ON FILE IN THE CLARK COUNTY, NEVADA, RECORDER'S OFFICE,
 IN FILE 89 OF SURVEYS, AT PAGE 3.

Call before you dig
OVERHEAD 1-702-593-6111
 Call before you dig
Dig 1-800-227-2600

NOTE:
 ALL MH STATIONING IS BASED ON SEWER
 LENGTHS FROM MANHOLE TO MANHOLE.
 ALL MANHOLES ARE 48" SIZE MANHOLES
 PER STD.DWG# SD-1.

APPROVAL:
 2784
 LAS VEGAS VALLEY WATER DISTRICT
 DATE 12/18/00

NOTE: CONTRACTOR SHALL VERIFY HORIZONTAL AND
 VERTICAL LOCATION OF EXISTING UTILITIES AND
 NOTIFY THE DESIGN ENGINEER IMMEDIATELY OF
 ANY DISCREPANCIES PRIOR TO CONSTRUCTION.



KAUFMAN AND BROAD
 750 PILOT ROAD, SUITE F
 LAS VEGAS, NEVADA 89119
 PH (702) 873-7550 FAX (702) 362-2258
 2727 SOUTH RAINBOW BOULEVARD LAS VEGAS, NEVADA 89146-5149
 PH (702) 873-7550 FAX (702) 362-2258
 nevada CONSULTING ENGINEERS • PLANNERS • LAND SURVEYORS

SHEET
WL1
 18 OF 19 SHEETS
 DRAWING NO.
 5674-4646-2

PROJECT: LONE MOUNTAIN HEIGHTS UNIT 2
DESIGNED BY: TH
CHECKED BY: IKJ
PROJECT NO.: 5779

DATE: 12/18/00

SCALE: 1"=40' HORIZ.
 1"=4' VERT.

REVISION: