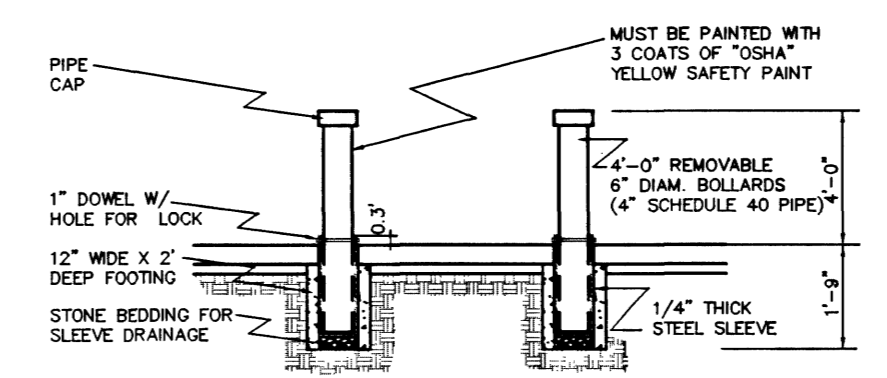


NOTE: PRIVATE STREETS ARE P.U.E.'S, PUBLIC SEWER EASEMENTS, AND PUBLIC DRAINAGE EASEMENTS TO BE PRIVATELY MAINTAINED BY HOME OWNERS ASSOCIATION



REMOVABLE LOCKING BOLLARD DETAIL (NOT CONCRETE FILLED) TYPICAL AT EASEMENTS (N.T.S.)

BACK OF CURB LINE & CURVE TABLES

Curve Table			Bearing Table		
No.	Radius	Delta	Tangent	Tangent	Distance
C1	10.00'	90.00'	10.00'	15.71'	15.71'
L1	5.00'	90.00'	5.00'	7.85'	7.85'

PROPERTY LINE LINE & CURVE TABLES

Bearing Table			Curve Table		
No.	Bearing	Distance	No.	Radius	Delta
L2	N 89°42'15" W	7.07'	C3	15.00'	34.54'
L3	N 05°03'34" E	14.83'	C4	15.00'	90.00'
L4	S 89°42'15" E	7.07'	C5	15.00'	85.13'
L5	S 89°39'17" E	6.38'	C6	19.00'	52.06'
L6	N 00°20'43" E	4.48'	C7	15.00'	85.17'
L7	S 05°03'34" W	7.41'	C8	15.00'	51.52'
L8	N 89°39'17" W	6.71'	C9	15.00'	42.30'
L9	N 00°17'39" E	6.82'	C10	15.00'	31.49'
L10	S 00°17'29" E	6.81'	C11	15.00'	42.27'
			C12	15.00'	85.20'
			C13	15.00'	51.56'
			C14	15.00'	42.23'
			C15	15.00'	42.23'
			C16	15.00'	85.17'
			C17	15.00'	51.52'

"THIS GRADING PLAN IS IN COMPLIANCE WITH THE APPROVED DRAINAGE STUDY ON FILE AT THE CITY OF LAS VEGAS PUBLIC WORKS DEPARTMENT"

Edward F. Taney 9.16.02
EDWARD F. TANEY, P.E. #9903

NOTE: SEE TRAFFIC & SIGNAGE PLAN FOR SIGHT VISIBILITY RESTRICTION EASEMENTS

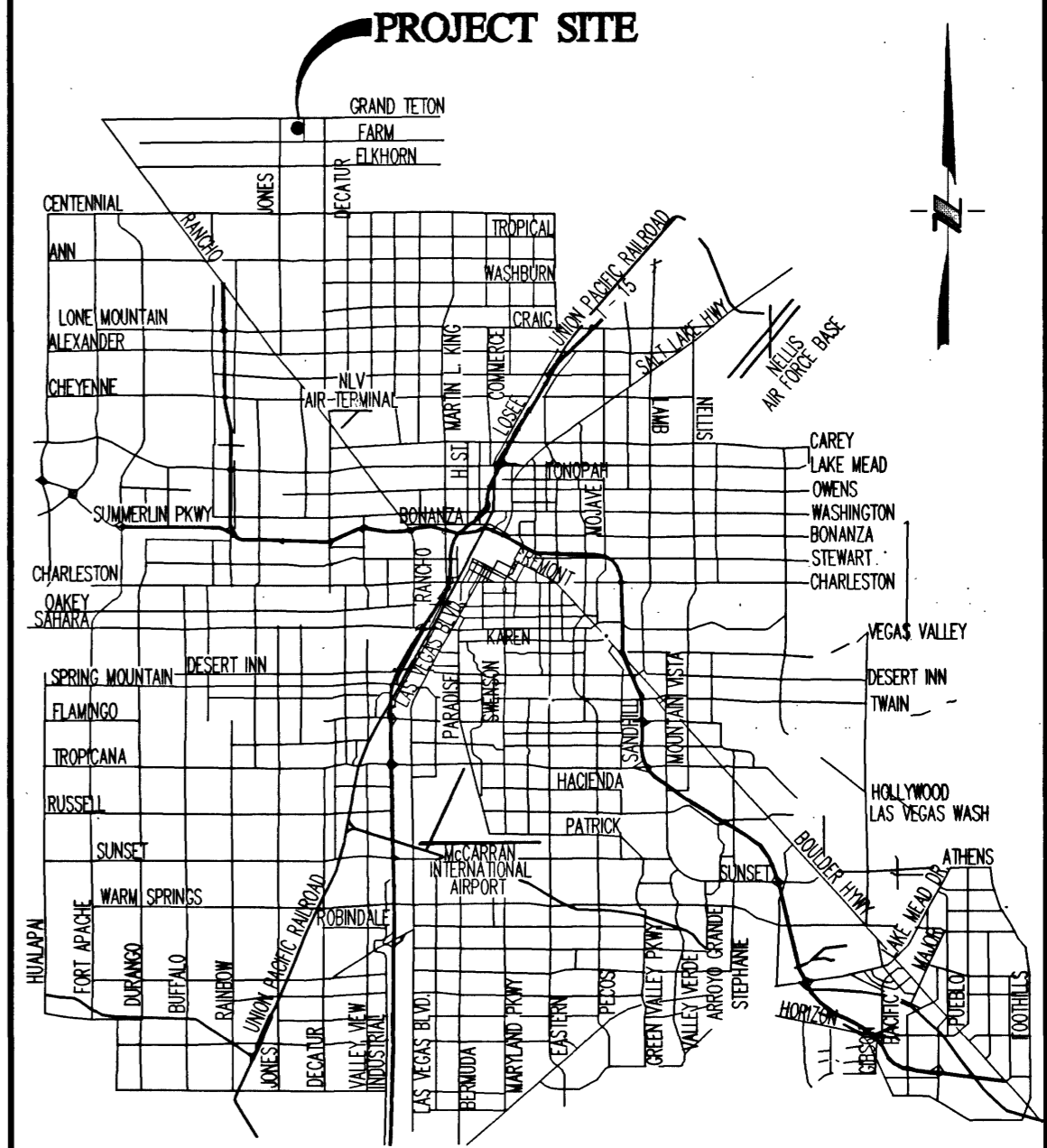
CONSTRUCTION NOTES

- 1 24" L-TYPE CURB & GUTTER (PER USD #216)
- 2 2" AC PAVING
- 3 HANDICAP RAMP PER USD #235 CASE I (A=B=8')
- 4 2" CONCRETE FLUME
- 5 4" CONCRETE SIDEWALK (USD #234)
- 6 'A' TYPE CURB (USD #219)
- 7 8' VALLEY GUTTER (PER USD #228)
- 8 2" SIDEWALK UNDER DRAIN (USD #236) SEE DETAIL "U" ON SHEET GDD
- 9 SAWCUT & MATCH EXISTING AC PAVEMENT
- 10 30" ROLL TYPE CURB & GUTTER PER USD #217 A
- 11 4" AC PAVING
- 12 3" AC PAVING

LEGEND

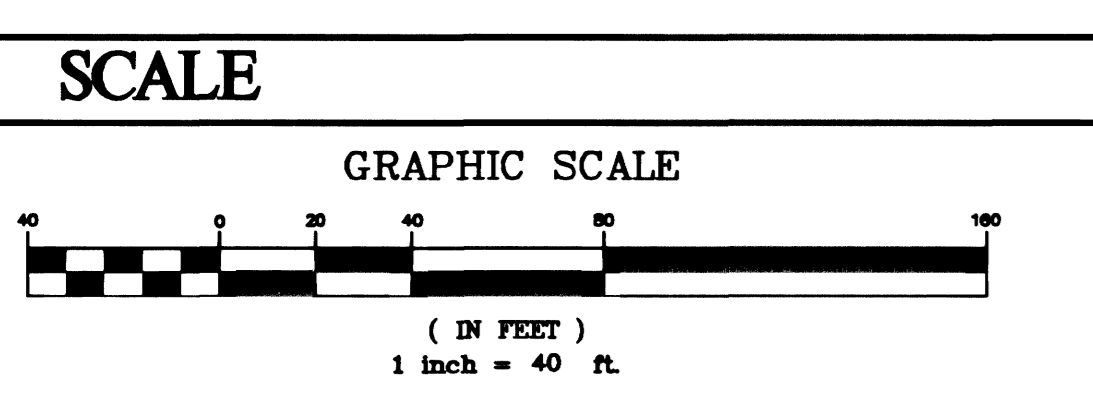
DESIGN ELEVATION	10.00
EXISTING ELEVATION	(10.00)
SCARP (SLOPE VARIES)	
EXISTING CONTOUR (1' INTERVAL)	
EXISTING CONTOUR (5' INTERVAL)	
DIRECTION OF FLOW	0.00%
RETAINING WALL	
CENTERLINE	
RIGHT-OF-WAY	
CUT LINE-ASPHALT	
EASEMENT	
ROUGH GRADE HINGE LINE	
LOT NUMBER & BLOCK NUMBER	1 ①

VICINITY MAP



ABBREVIATIONS

AC	ASPHALTIC CONCRETE	RT	RIGHT-OF-WAY
BCR	BACK OF CURB	R/W	RIGHT-OF-WAY
BVC	BACK OF CURB RADIUS	SS	SANITARY SEWER
BM	BENCHMARK	ST	STANDARD
BM	BEGINNING OF VERTICAL CURVE	STD	STANDARD
BM	BENCH MARK	ST	STANDARD
CATV	CABLE TELEVISION	ST	STANDARD
CBC	CITY BOULDER CITY	ST	STANDARD
CC	CLARK COUNTY	ST	STANDARD
CC	CLEAR CUT	ST	STANDARD
CC	CUBIC YARD	ST	STANDARD
CC	DESIGN GRADE	ST	STANDARD
CC	EDGE OF PAVEMENT	ST	STANDARD
CC	END OF CURVE	ST	STANDARD
CC	END OF VERTICAL CURVE	ST	STANDARD
CC	EXISTING FINISH GRADE	ST	STANDARD
CC	EXISTING FINISH FLOOR ELEVATION	ST	STANDARD
CC	FEET	ST	STANDARD
CC	FIRE HYDRANT	ST	STANDARD
CC	FLOW LINE	ST	STANDARD
CC	GRADE BREAK	ST	STANDARD
CC	HIGH POINT	ST	STANDARD
CC	INVERT	ST	STANDARD
CC	LOWER FINISH FLOOR ELEVATION	ST	STANDARD
CC	LINEAR FEET	ST	STANDARD
CC	LAS VEGAS VALLEY WATER DISTRICT	ST	STANDARD
CC	MANHOLE	ST	STANDARD
CC	MAXIMUM	ST	STANDARD
CC	MINIMUM	ST	STANDARD
CC	NOT TO SCALE	ST	STANDARD
CC	ON CENTER	ST	STANDARD
CC	POINT OF INTERSECTION	ST	STANDARD
CC	POINT OF REVERSE CURVE	ST	STANDARD
CC	POINT OF CURVE	ST	STANDARD
CC	POINT OF TANGENCY	ST	STANDARD
CC	PROP. FINISH GRADE (BY OTHERS)	ST	STANDARD
CC	PROP. FINISH GRADE (BY OTHERS)	ST	STANDARD
CC	PROPERTY LINE	ST	STANDARD
CC	PULL BOX	ST	STANDARD
CC	RADIUS	ST	STANDARD
CC	REINFORCED CONCRETE BOX	ST	STANDARD
CC	REINFORCED CONCRETE PIPE	ST	STANDARD



SCALE	LEGAL DESCRIPTION	BENCHMARK	KEY MAP
GRAPHIC SCALE 1 inch = 40 ft.	THE SOUTH HALF (S1/2) OF THE SOUTH HALF (S1/2) OF THE NORTHWEST QUARTER (NW1/4) OF THE NORTHEAST QUARTER (NE1/4) OF SECTION 16, TOWNSHIP 19 SOUTH, RANGE 60 EAST, M.D.M., CLARK COUNTY, NEVADA.	CITY OF LAS VEGAS BENCH MARK - BLV90-16C4 RIVET AND PLATE IN TOP OF CURB AT SW CORNER OF FARM AND CIMARRON	
GEOTECHNICAL	EARTHWORK	BASIS OF BEARING	FLOOD CONTROL
REPORT TENN JOB NO. 01-283.0, DATED OCTOBER 24, 2001. PRODUCED BY TESTING ENGINEERS - NEVADA, INC. 8280 SOUTH VALLEY VIEW BLVD. SUITE 722. LAS VEGAS, NEVADA 89118	CUT = 00.000 CUBIC YARDS FILL = 0.000 CUBIC YARDS OVEREXCAVATION @ 00.0% SHRINKAGE = 00.000 CY'S SHRINKAGE @ 00.0% = 0.000 CUBIC YARDS NET = 00.000 CUBIC YARDS IMPORT	N00°13'34"E - BEING THE WEST LINE OF THE NORTHWEST QUARTER OF THE NORTHEAST QUARTER OF SECTION 16, TOWNSHIP 19 SOUTH, RANGE 60 EAST, M.D.M., COUNTY OF CLARK, STATE OF NEVADA, AS SHOWN ON THE FINAL MAP OF LAMPLIGHT VILLAGE AT CENTENNIAL SPRINGS UNIT 2, RECORDED IN BOOK 98 ON PAGE 63, OFFICIAL RECORDS OF SAID COUNTY.	ENGINEER'S ESTIMATE OF PRIVATE FLOOD CONTROL REQUIRED ITEMS: QUANTITY: 291 LF DESCRIPTION: 1 COURSE STEM WALL (ALONG CIMARRON RD.)
Call Two Working Days Before You Dig Dig Safely. Dig Safely 1-800-227-2600			

REVISIONS

NO.	DESCRIPTION	BY	DATE	APPR.

CARINA CORPORATION
2881 BUSINESS PARK COURT, SUITE 210
LAS VEGAS, NEVADA 89128
(702) 228-6376 FAX: (702) 228-6002

TANEY ENGINEERING
4445 S. JONES BLVD. SUITE #1
LAS VEGAS, NV 89103
(702) 362-8844 FAX: (702) 362-5233

LAMPLIGHT VILLAGE UNIT FIVE AT CENTENNIAL SPRINGS

GRADING PLAN EAST

EDWARD F. TANEY
REGISTERED PROFESSIONAL ENGINEER
NOV 20 2001
9.16.02

DATE: 12-01
SCALE: 1" = 40'
JOB NO: CRN-00-001
DESIGNED BY: EFT
DRAWN BY: EFT/OGS
SHEET NAME: GP2
SHEET: 107Y-4647-5
4 OF 18