

MEANDERING PATH AVENUE (PRIVATE DRIVE) - PLAN VIEW

PUBLIC UTILITY EASEMENT, CLV PUBLIC SEWER EASEMENT AND PUBLIC DRAINAGE EASEMENT TO BE PRIVATELY MAINTAINED

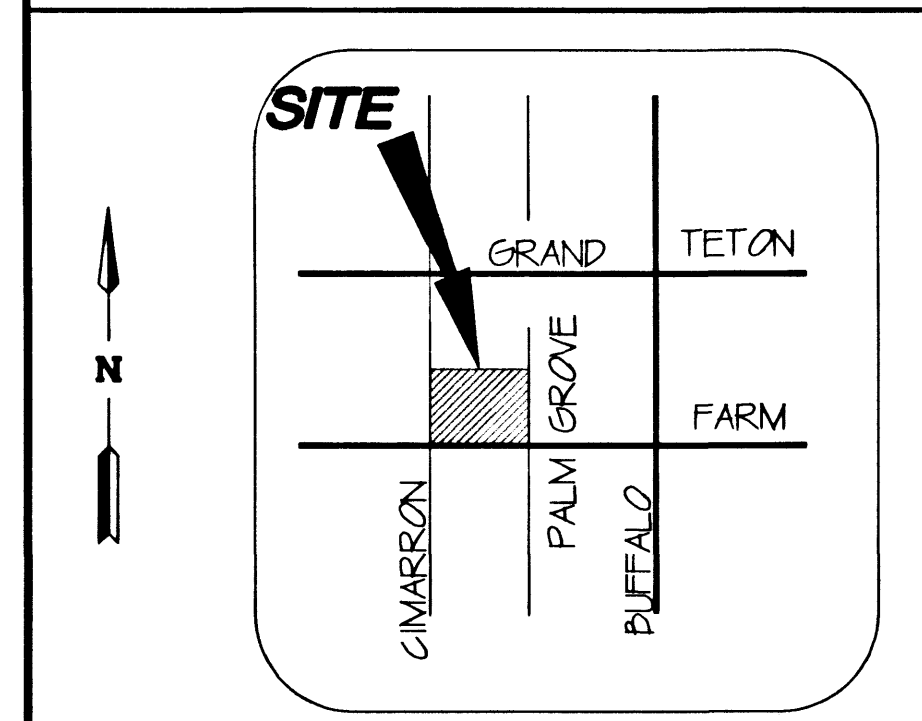
CURVE DATA				
No.	Radius	Delta	Length	Tangent
C1	15.00	90°00'00"	23.56	15.00
C2	19.00	09°27'44"	3.14	1.57
C3	31.00	09°27'44"	5.12	2.57
C4	19.00	27°15'31"	9.04	4.61
C5	31.00	14°02'10"	7.59	3.82
C6	19.00	14°02'10"	4.65	2.34
C7	11.00	84°15'30"	16.18	9.95
C8	11.00	95°44'30"	18.38	12.16
C9	15.00	89°33'09"	23.31	14.75
C10	15.00	90°56'51"	23.81	15.25
C11	15.00	48°06'51"	12.60	6.70
C12	11.00	89°33'09"	17.10	10.82
C13	15.00	48°13'09"	12.10	6.40
C14	11.00	90°56'51"	17.46	11.18
C15	15.00	41°25'29"	10.84	5.67
C16	25.00	36°52'17"	16.09	8.33
C17	15.00	84°23'50"	22.10	13.60
C18	11.00	95°36'10"	18.35	12.13
C19	11.00	84°23'50"	16.20	9.97
C20	15.00	15°46'10"	13.81	7.44
C21	11.00	94°47'39"	18.20	11.96
C22	15.00	47°10'00"	12.35	6.55
C23	11.00	90°00'00"	17.28	11.00
C24	15.00	42°22'20"	11.09	5.81
C25	15.00	85°12'21"	22.31	13.79
C26	11.00	85°20'41"	16.39	10.14
C27	15.00	51°49'19"	13.57	7.29
C28	14.00	25°22'25"	6.20	3.15

LINE DATA		
No.	Bearing	Distance
L1	N 04°56'00" E	9.00
L2	N 84°55'39" W	10.03
L3	S 85°04'00" E	11.60
L4	S 85°16'23" E	16.35
L5	S 85°04'00" E	11.00
L6	N 84°55'39" W	10.04
L7	S 85°04'00" E	6.58

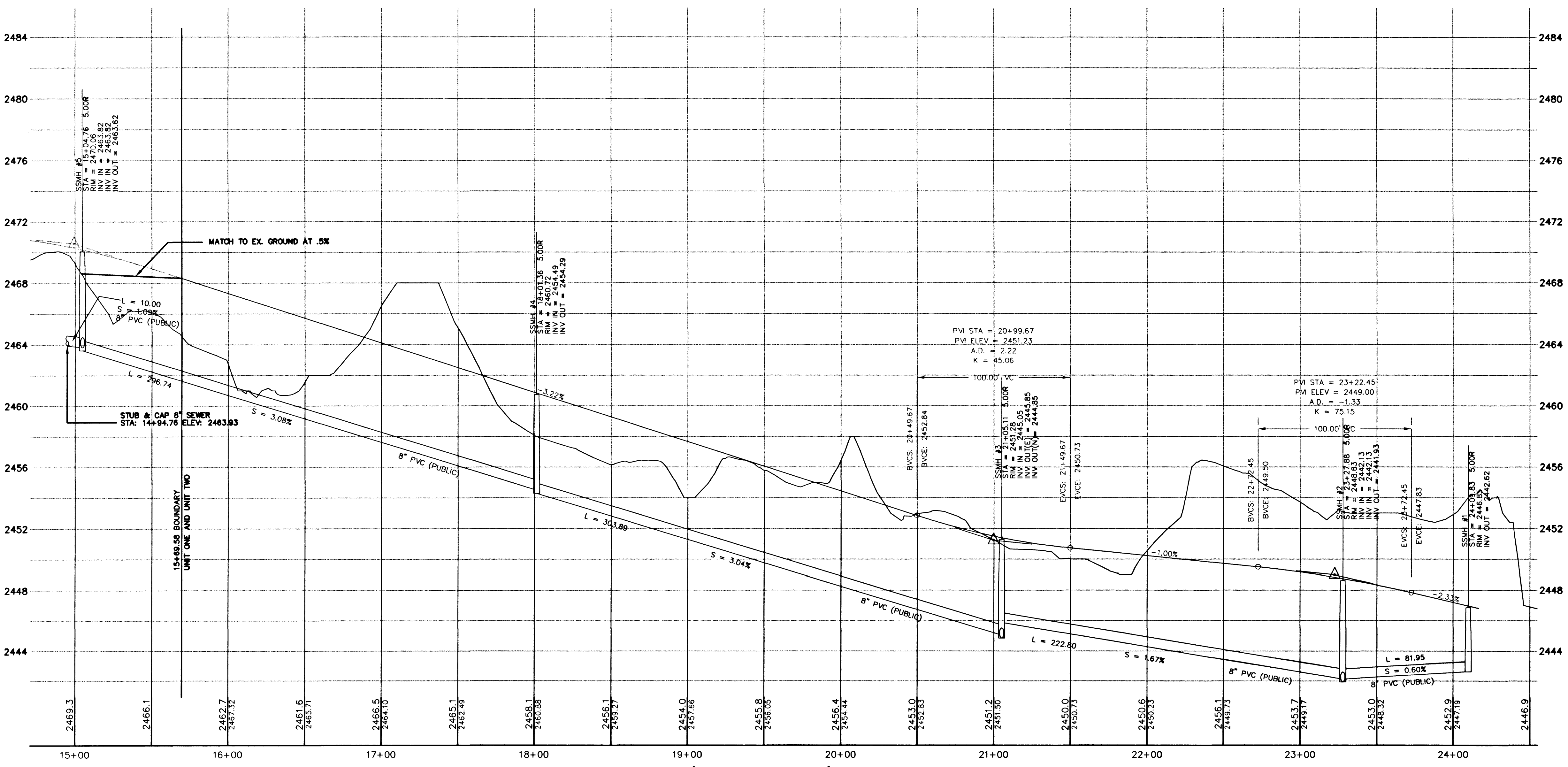
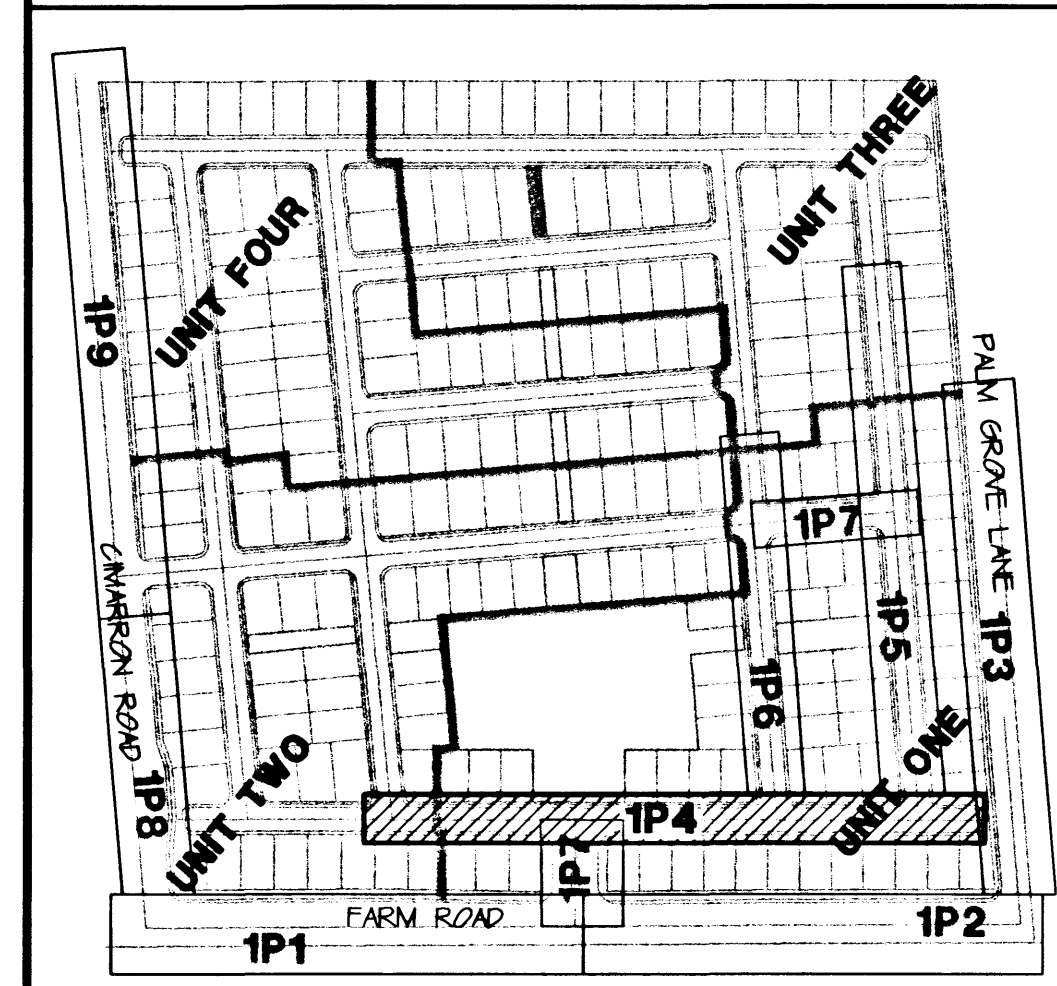
CONSTRUCTION NOTES

- ① "L" TYPE CURB (UDS#216)
- ② "A" TYPE ISLAND CURB (UDS#219)
- ③ VALLEY GUTTER (UDS#228 AND #229)
- ④ SIDEWALK UNDERDRAIN (UDS#236)
- ⑤ SIDEWALK RAMP (UDS#235)

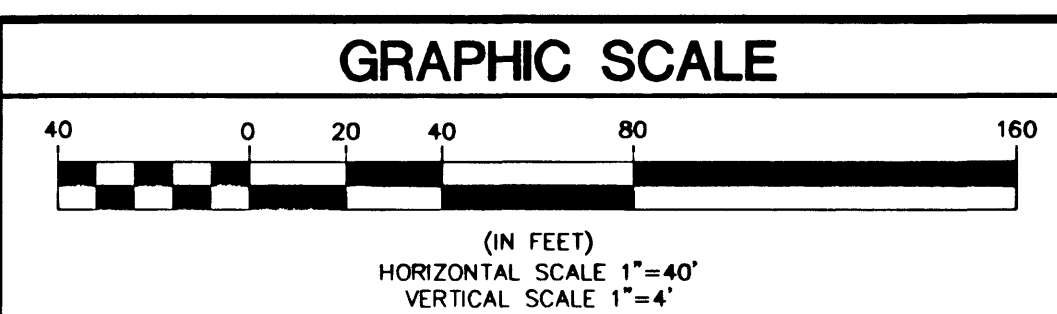
VICINITY MAP



KEY MAP



MEANDERING PATH AVENUE (PRIVATE DRIVE) - PROFILE VIEW



BASIS OF BEARINGS

THE BASIS OF BEARINGS FOR THIS SURVEY IS THE EAST LINE OF THE NORTHEAST ONE-QUARTER OF SECTION 16, TOWNSHIP 19 SOUTH, RANGE 60 EAST, M.D.M. WHICH BEARS NORTH 00°19'37" EAST AS SHOWN IN THE OFFICE OF THE CLARK COUNTY, NEVADA RECORDER IN BOOK 79 OF PLATS ON PAGE 50.

BENCHMARK

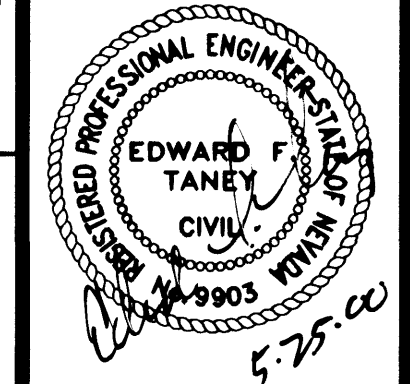
CITY OF LAS VEGAS BENCHMARK No. 5 STATION 11V90-16NWS
 USC AND GS BM # U169.
 764.7181 METERS (NAVD 88)
 764.7181 x (3937/1200) = 2508.913 FEET (NAVD 88)

NOTICE!

EXISTING UTILITIES ARE SHOWN ON PLANS FOR THE CONVENIENCE OF THE CONTRACTOR ONLY. THE CONTRACTOR IS RESPONSIBLE FOR THE PROTECTION OF ALL UTILITIES. THE ENGINEER BEARS NO RESPONSIBILITY FOR UTILITIES NOT SHOWN OR SHOWN INCORRECTLY.

Call Before You Dig

1-800-227-2600
 UNDERGROUND SERVICE (USA)



SHEET 14 OF 21 SHEETS
 DRAWING NO. 1024-4642-1

CARINA CORPORATION
 2880 BUSINESS PARK COURT, SUITE 210
 LAS VEGAS, NEVADA 89128
 (702) 228-6376

ALPHA & ENGINEERING COMPANY
 50 So. Jones #202, Las Vegas, NV, 89107
 Telephone: (702) 877-1300

PLAN & PROFILE MEANDERING PATH AVENUE STA 14+94.76 TO STA 24+16.80

LAMPLIGHT VILLAGE AT CENTENNIAL SPRINGS UNIT 1

FILE NAME: 921102IMP.dwg
 VIEW NAME: IP4

20344