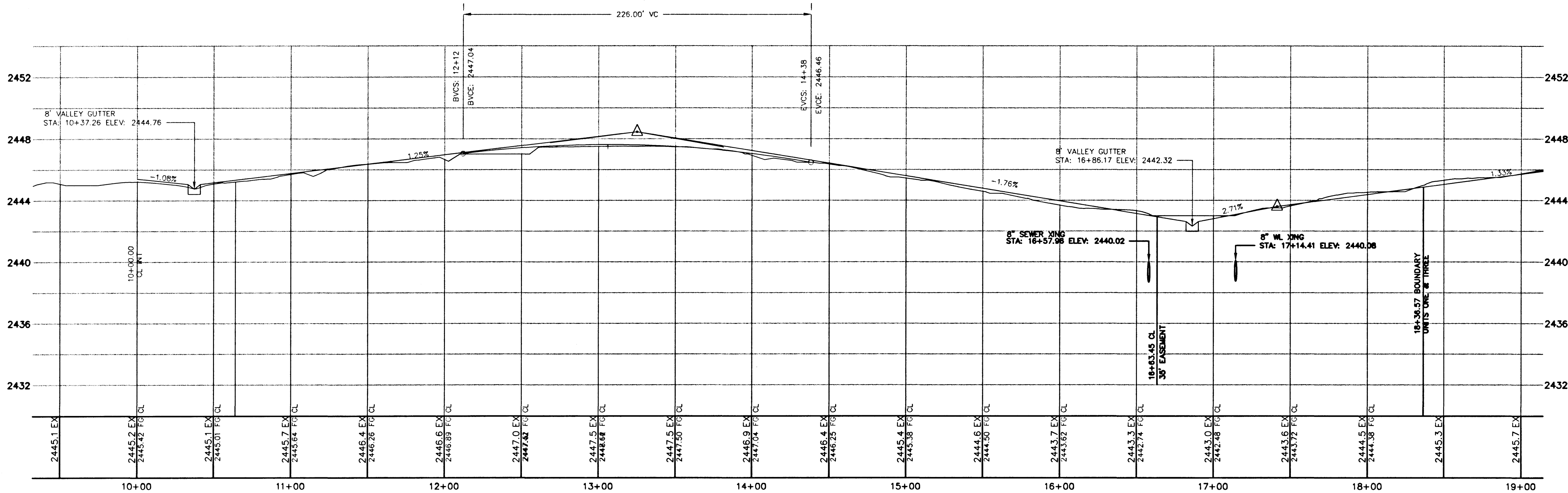


PALM GROVE LANE PUBLIC STREET - PLAN VIEW

CURVE DATA				
No.	Radius	Delta	Length	Tangent
C1	15.00	90°00'00"	23.56	15.00
C2	19.00	05°27'44"	3.14	1.57
C3	31.00	05°27'44"	5.12	2.57
C4	19.00	27°15'31"	9.04	4.51
C5	31.00	14°02'10"	7.59	3.82
C6	19.00	14°02'10"	4.65	2.34
C7	11.00	84°15'30"	16.18	9.95
C8	11.00	95°44'30"	18.38	12.16
C9	15.00	89°03'09"	23.31	14.75
C10	15.00	90°56'51"	23.81	15.25
C11	15.00	48°08'51"	12.60	6.30
C12	11.00	89°03'09"	17.10	10.82
C13	15.00	46°13'09"	12.10	6.40
C14	11.00	90°56'51"	17.46	11.18
C15	15.00	47°29'29"	10.84	5.67
C16	25.00	36°52'12"	16.09	8.33
C17	15.00	84°23'50"	22.10	13.60
C18	11.00	95°36'10"	18.35	12.13
C19	11.00	84°23'50"	16.20	9.97
C20	15.00	52°46'10"	13.81	7.44
C21	11.00	94°47'59"	18.20	11.95
C22	15.00	47°40'00"	12.35	6.55
C23	11.00	90°00'00"	17.28	11.00
C24	15.00	42°22'20"	11.09	5.81
C25	15.00	85°12'21"	22.31	13.79
C26	11.00	85°20'41"	16.39	10.14
C27	15.00	51°49'19"	13.57	7.29
C28	14.00	25°22'25"	6.20	3.15

LINE DATA		
No.	Bearing	Distance
L1	N 04°56'00" E	9.00
L2	N 84°55'59" W	10.03
L3	S 85°04'00" E	11.60
L4	S 85°16'23" E	16.35
L5	S 85°04'00" E	11.00
L6	N 84°55'59" W	10.04
L7	S 85°04'00" E	6.58

HIGH POINT ELEV = 2447.62
 HIGH POINT STA = 13+05.98
 PVI STA = 13+25
 PVI ELEV = 2448.45
 A.D. = -3.01
 K = 75.15

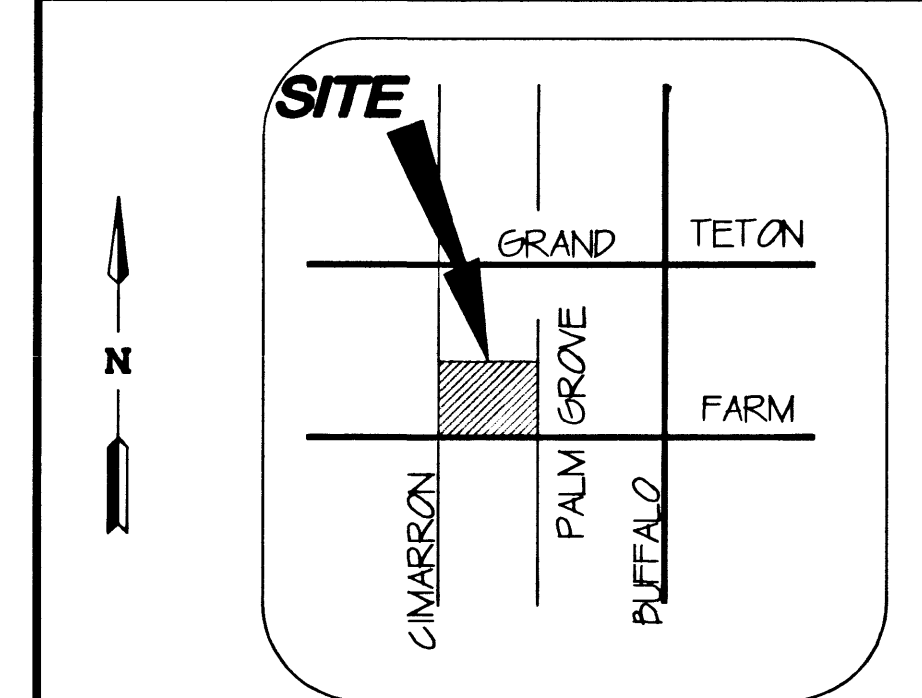


PALM GROVE LANE PUBLIC STREET - PROFILE VIEW

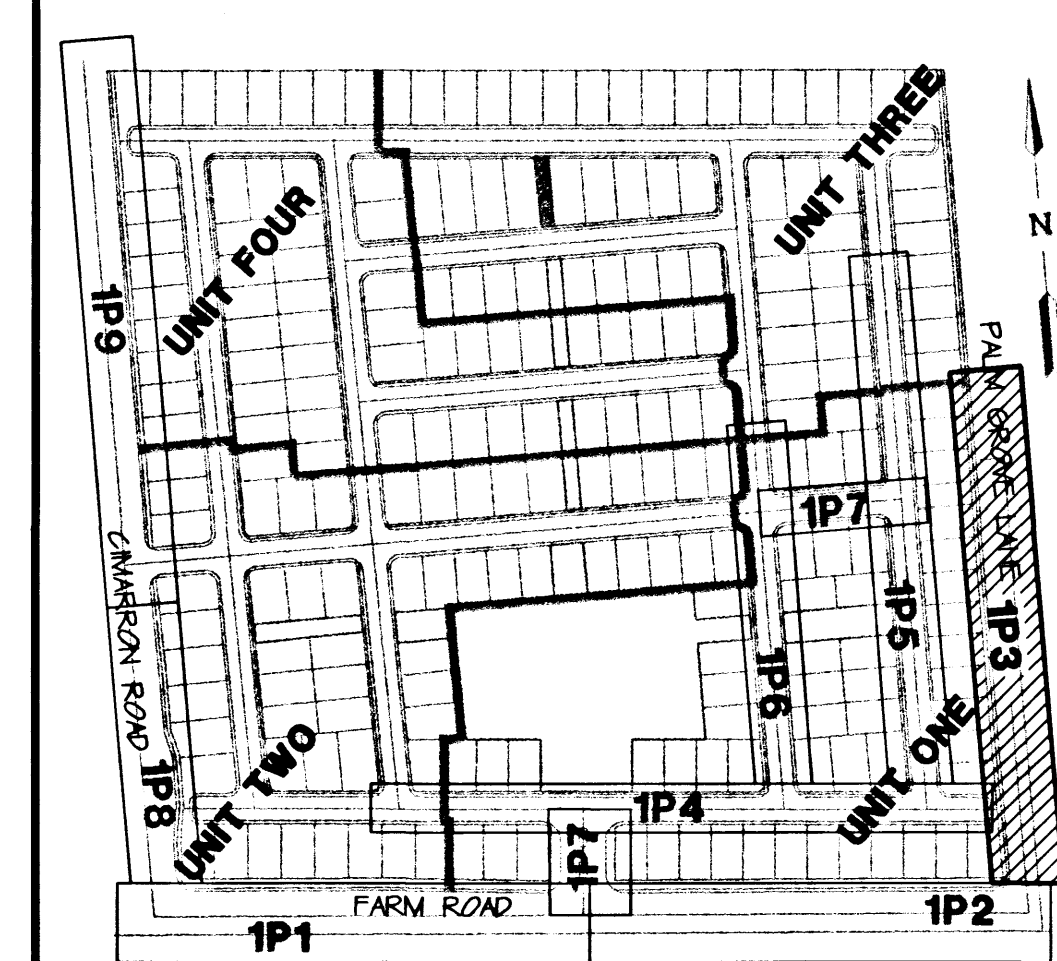
CONSTRUCTION NOTES

- ① "L" TYPE CURB (UDS#216)
- ② "A" TYPE ISLAND CURB (UDS#219)
- ③ VALLEY GUTTER (UDS#228 AND #229)
- ④ SIDEWALK UNDERDRAIN (UDS#236)
- ⑤ SIDEWALK RAMP (UDS#235)

VICINITY MAP

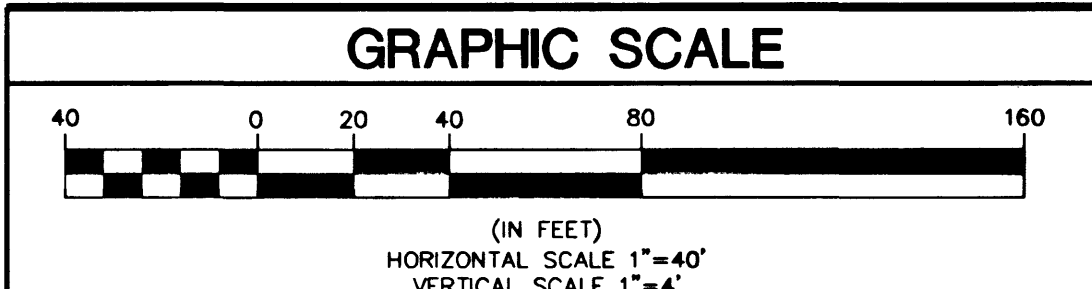


KEY MAP



NOTICE!
 EXISTING UTILITIES ARE SHOWN ON PLANS FOR THE CONVI-
 NIENCE OF THE CONTRACTOR ONLY. THE CONTRACTOR IS RESPONSIBLE FOR THE PRO-
 TECTION OF ALL UTILITIES. THE ENGINEER BEARS NO RES-
 PONSIBILITY FOR UTILITIES NOT SHOWN OR SHOWN INCORRECTLY.

BEFORE YOU
Call
DJs
 1-800-227-2600
 UNDERGROUND SERVICE (USA)



BASIS OF BEARINGS
 THE BASIS OF BEARINGS FOR THIS SURVEY IS THE EAST LINE OF THE NORTHEAST ONE-QUARTER OF SECTION 16, TOWNSHIP 19 SOUTH, RANGE 60 EAST, M.D.M. WHICH BEARS NORTH 00°19'37" EAST AS SHOWN IN THE OFFICE OF THE CLARK COUNTY, NEVADA RECORDER IN BOOK 79 OF PLATS ON PAGE 50.

BENCHMARK
 CITY OF LAS VEGAS BENCHMARK No. 5 STATION 11V90-16NW6 USC AND GS BM # U169.
 764.7181 METERS (NAVD 88)
 764.7181 x (3937/1200) = 2508.913 FEET (NAVD 88)

CARINA CORPORATION
 2880 BUSINESS PARK COURT, SUITE 210
 LAS VEGAS, NEVADA 89128
 (702) 228-6376

ENGINEERING COMPANY
ALPHA &
 50 So. Jones #202, Las Vegas, NV, 89107
 Telephone: (702) 877-1300

PLAN & PROFILE
PALM GROVE LANE
STA 10+00 TO STA 18+36.57

LAMPLIGHT VILLAGE
AT CENTENNIAL SPRINGS
UNIT 1

DRAWN BY: CP
 DESIGNED BY: CP
 CHECKED BY: EFT
 PROJECT NO: 9211-02
 SCALE: 1"=40'
 SHEET 13 OF 21 SHEETS
 DRAWING NO. 107-4642-1

EDWARD TANEY
 PROFESSIONAL ENGINEER
 STATE OF NEVADA
 LICENSE NO. 525-02