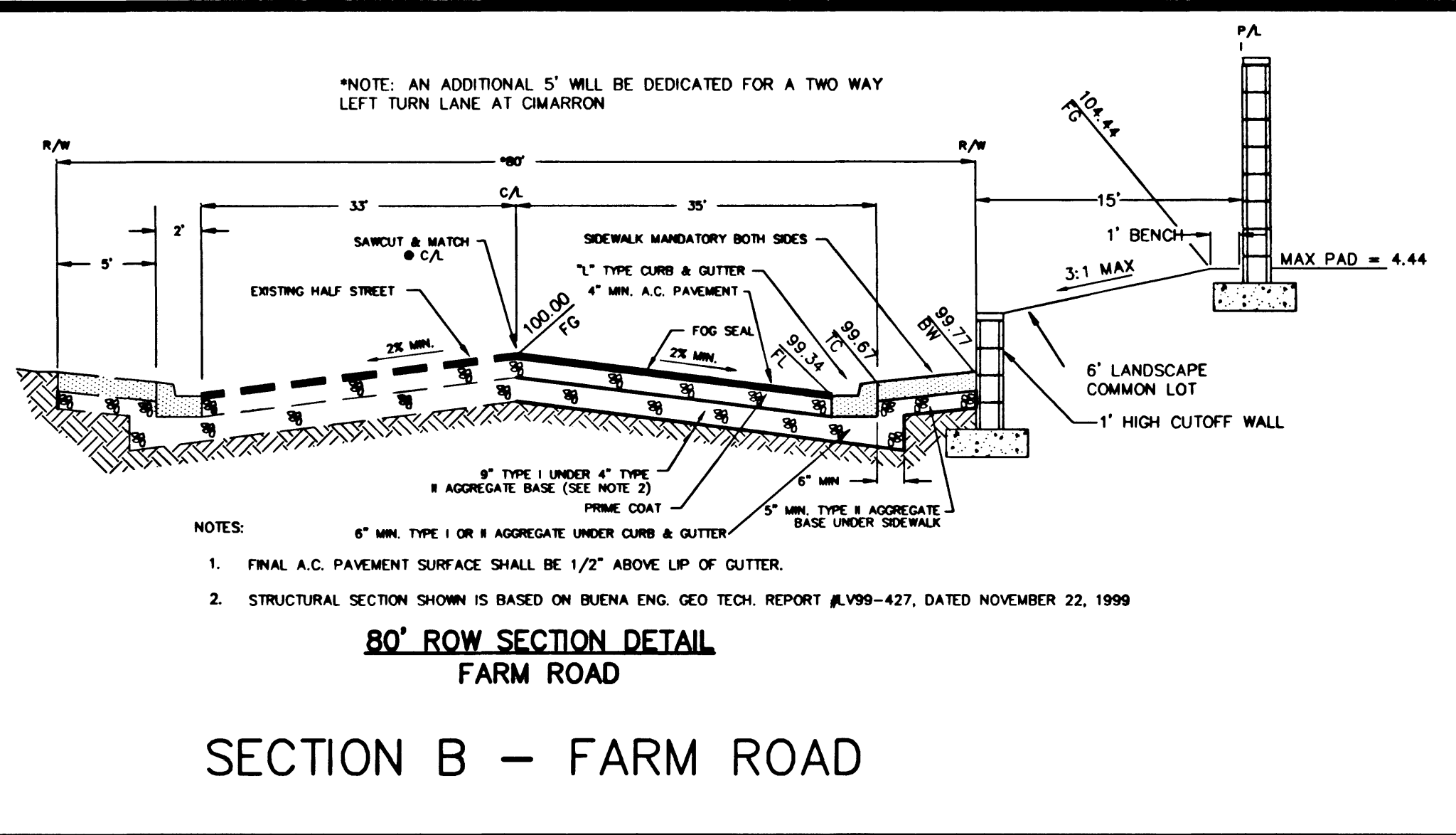
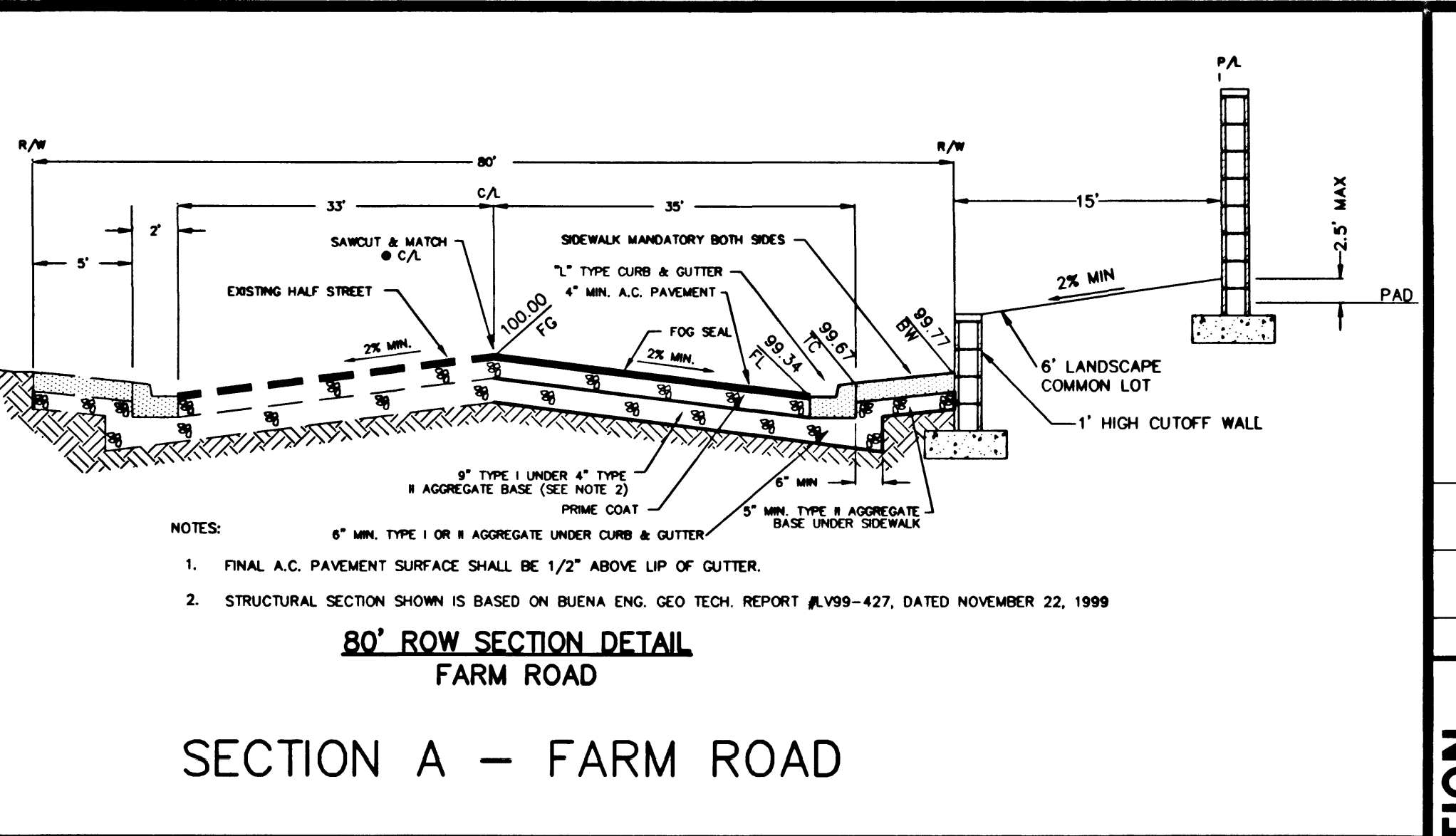


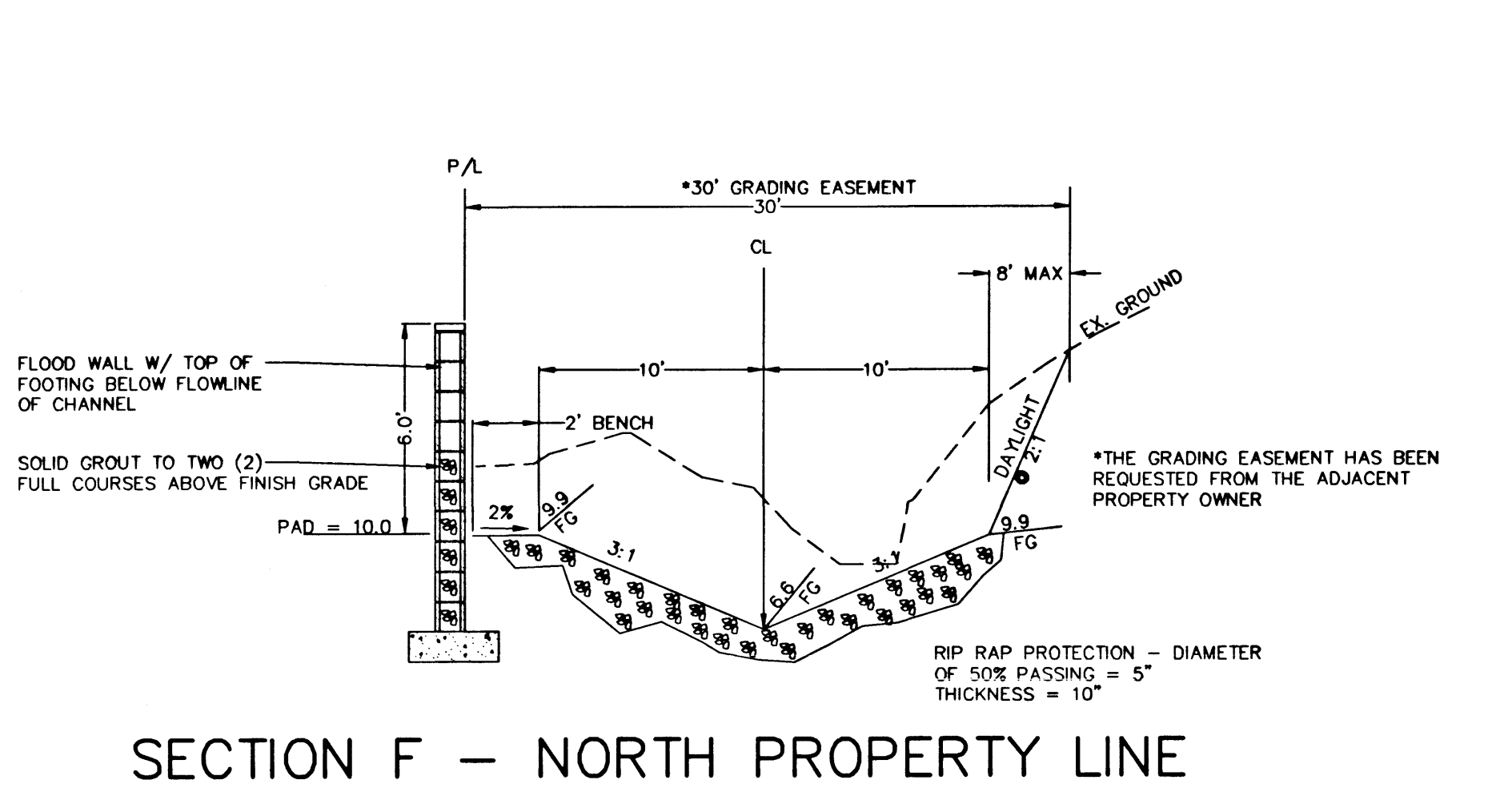
SECTION C - CIMARRON ROAD



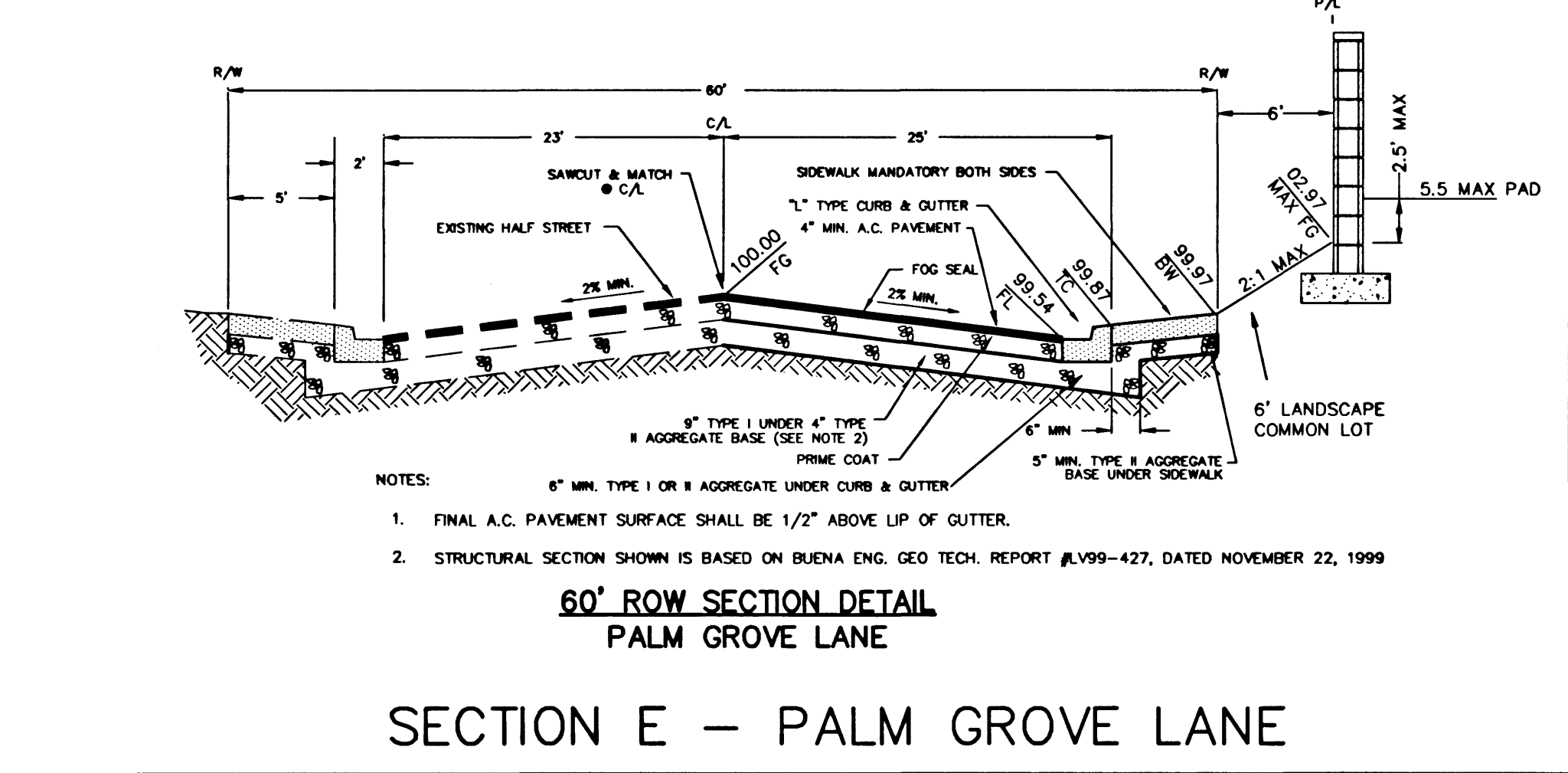
SECTION B - FARM ROAD



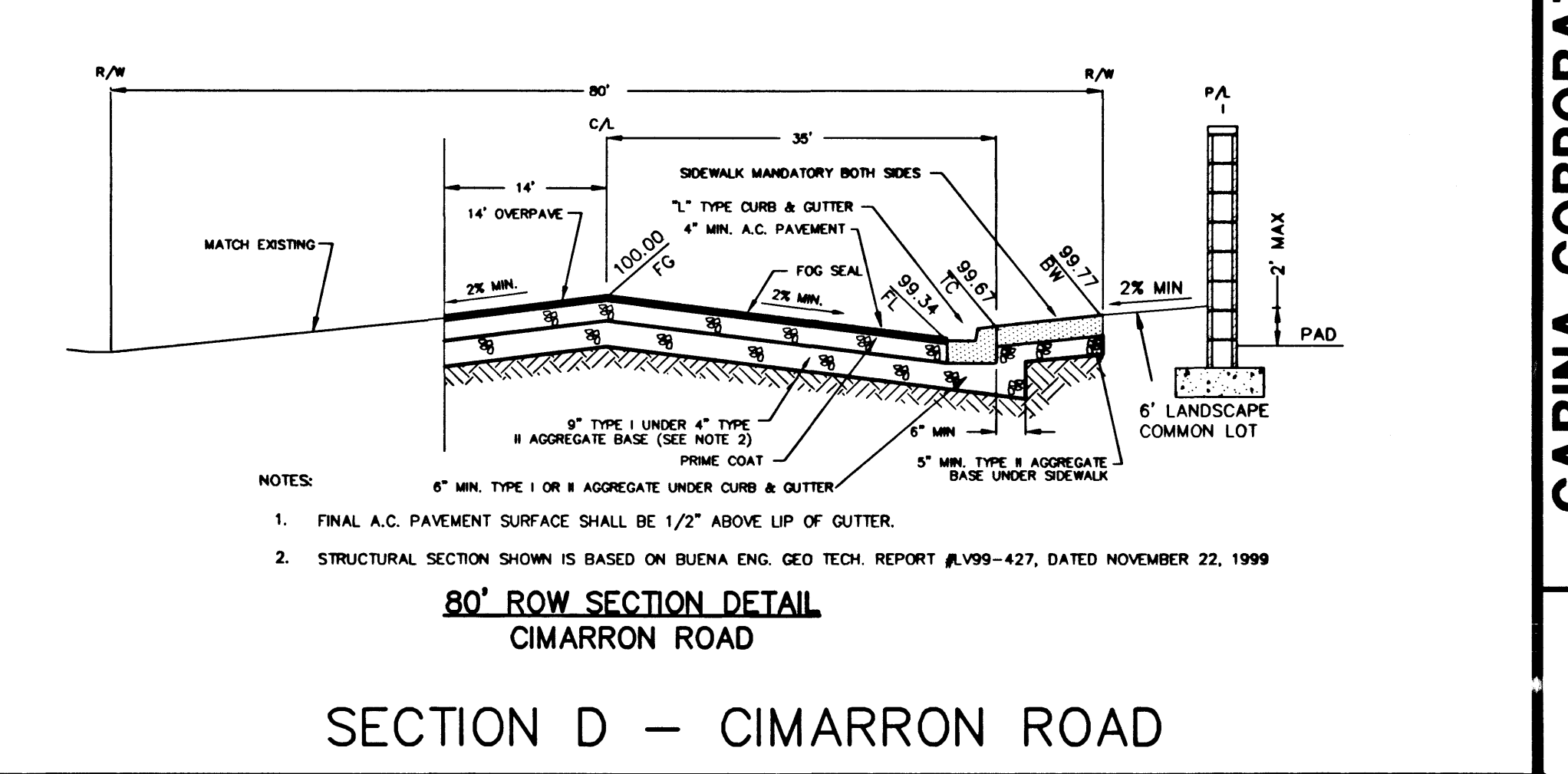
SECTION A - FARM ROAD



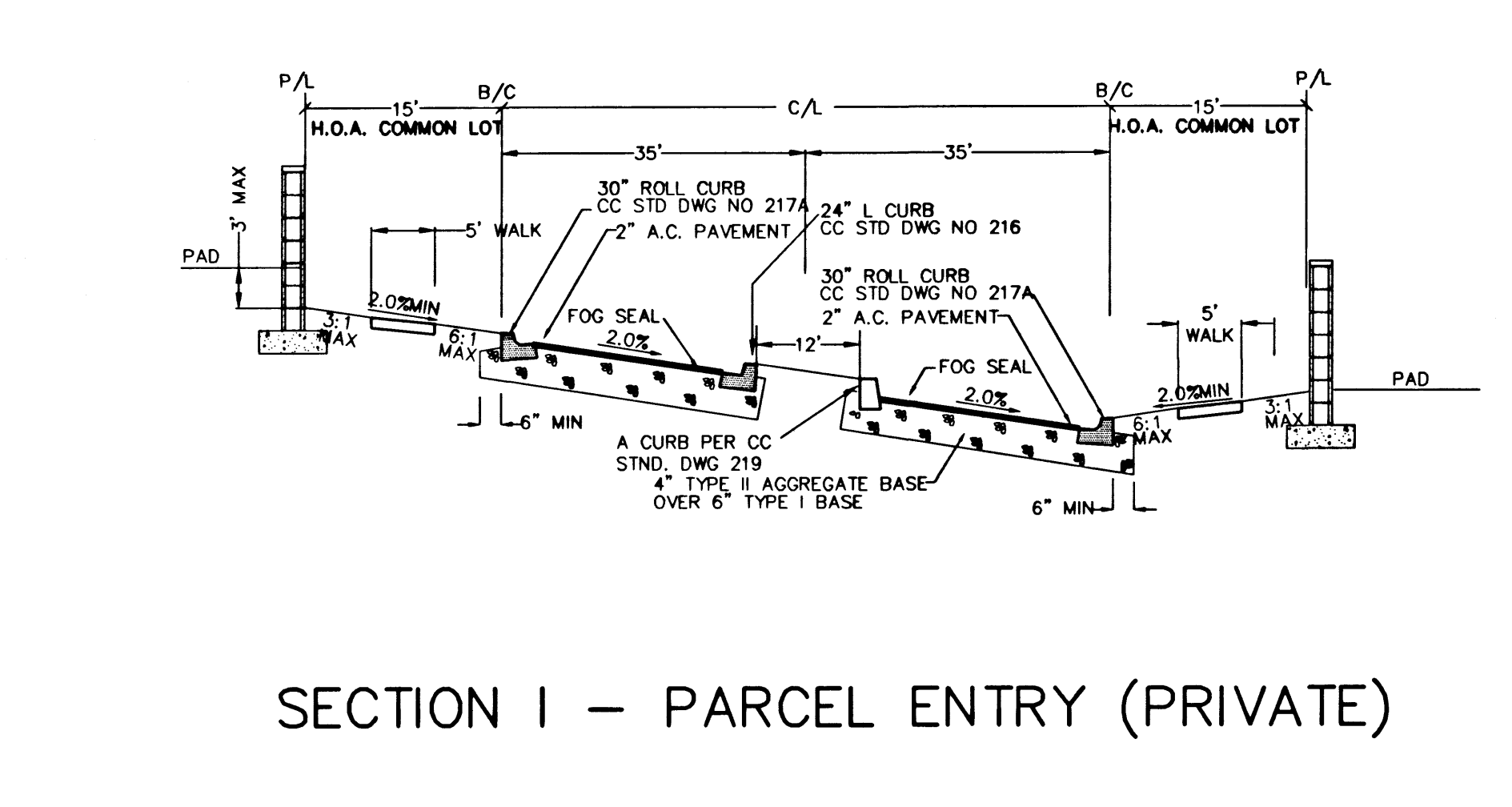
SECTION F - NORTH PROPERTY LINE



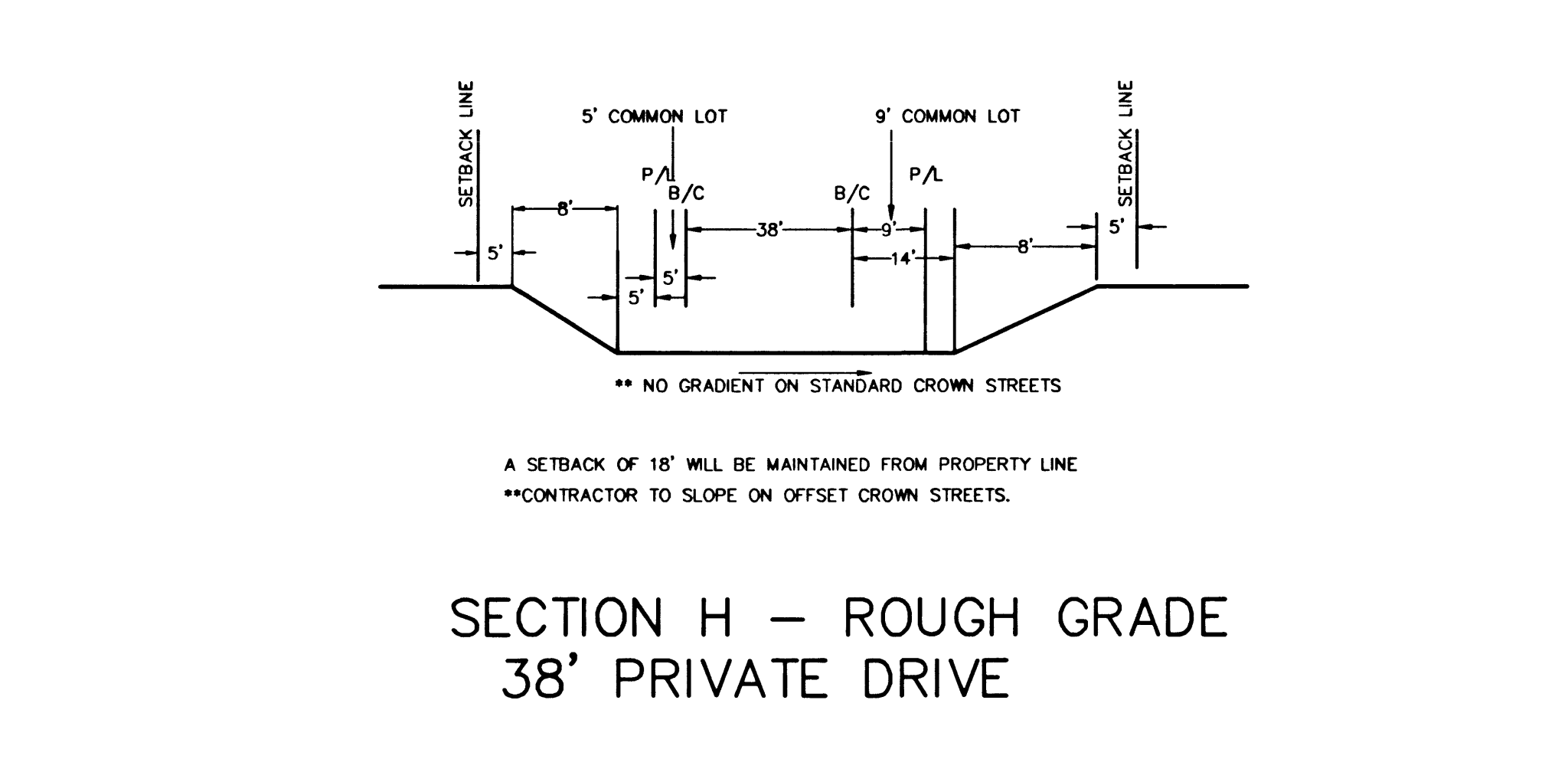
SECTION E - PALM GROVE LANE



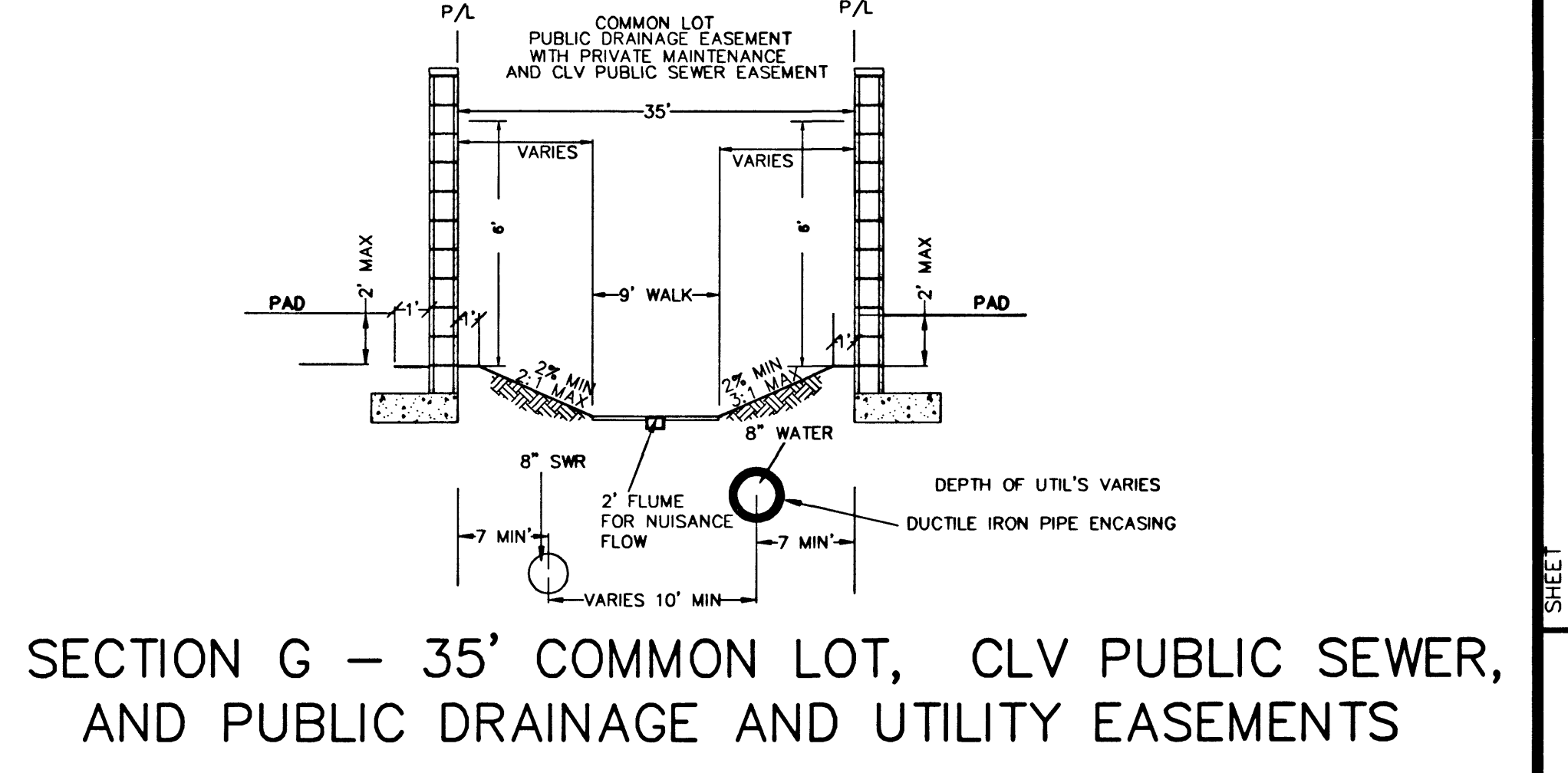
SECTION D - CIMARRON ROAD



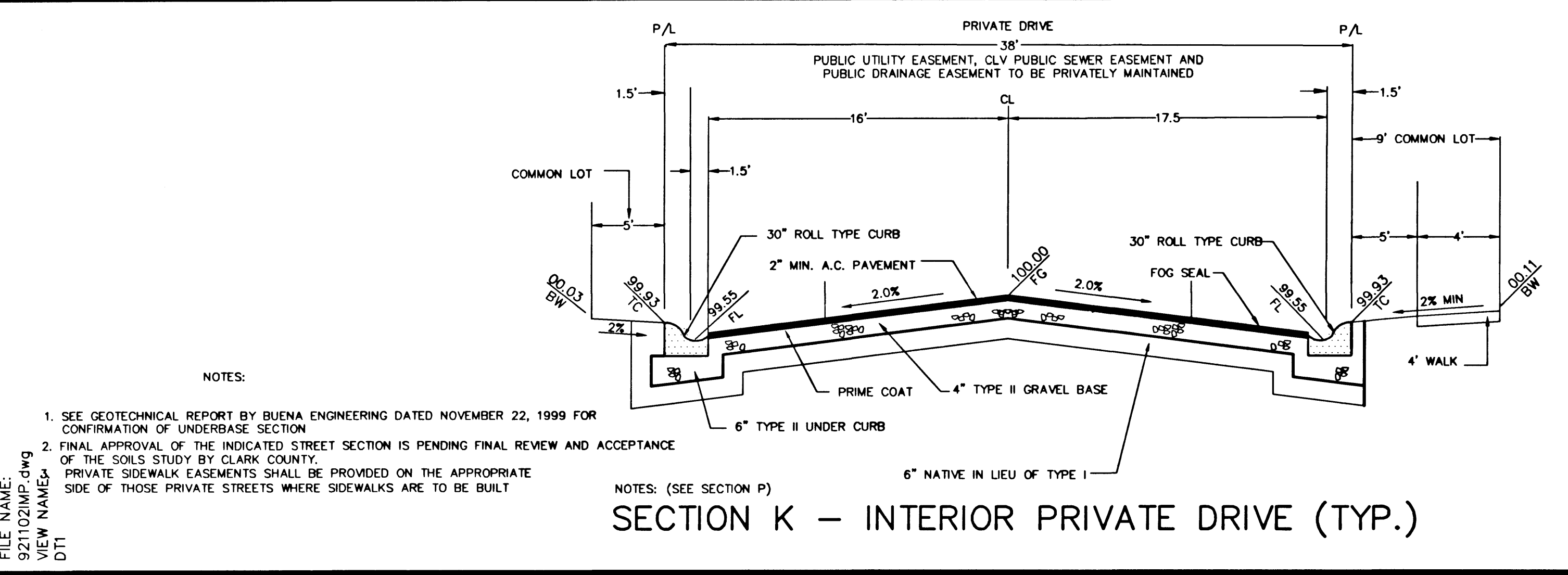
SECTION I - PARCEL ENTRY (PRIVATE)



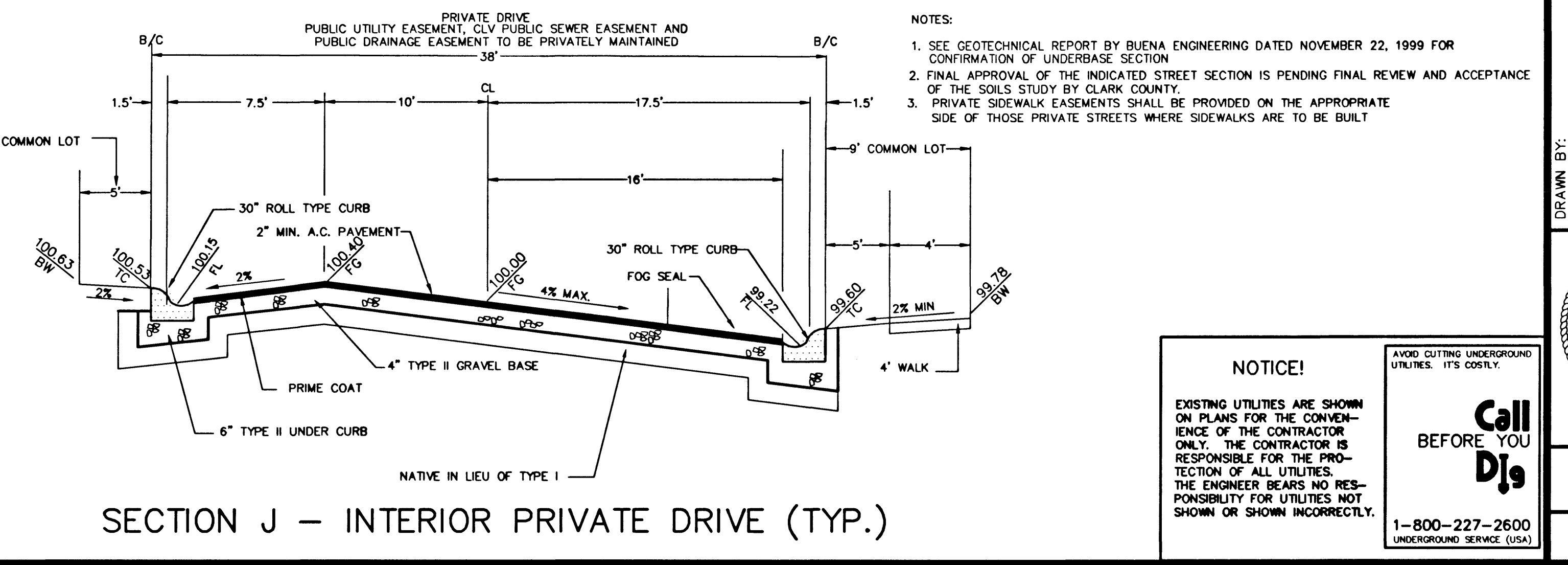
SECTION H - ROUGH GRADE 38' PRIVATE DRIVE



SECTION G - 35' COMMON LOT, CLV PUBLIC SEWER, AND PUBLIC DRAINAGE AND UTILITY EASEMENTS



SECTION K - INTERIOR PRIVATE DRIVE (TYP.)



SECTION J - INTERIOR PRIVATE DRIVE (TYP.)

FILE NAME: 921102IMP.dwg
VIEW NAME: DTT

NOTICE!
EXISTING UTILITIES ARE SHOWN ON PLANS FOR THE CONVENIENCE OF THE CONTRACTOR ONLY. THE CONTRACTOR IS RESPONSIBLE FOR THE PROTECTION OF ALL UTILITIES. THE ENGINEER BEARS NO RESPONSIBILITY FOR UTILITIES NOT SHOWN OR SHOWN INCORRECTLY.

AVOID CUTTING UNDERGROUND UTILITIES. IT'S COSTLY.

Call BEFORE YOU Dig

1-800-227-2600
UNDERGROUND SERVICE (USA)

CARINA CORPORATION
2880 BUSINESS PARK COURT, SUITE 210
LAS VEGAS, NEVADA 89128
(702) 228-6376

ALPHA & ENGINEERING COMPANY
50 So. Jones #202, Las Vegas, NV 89107
Telephone: (702) 877-1300

LAMPLIGHT VILLAGE AT CENTENNIAL SPRINGS UNIT 1

DETAIL SHEET

SHEET: 5.15.00
DESIGNED BY: CP
CHECKED BY: EFT
PROJECT NO: 9211-02
SCALE: NTS

DRAWN BY: CP
DESIGNED BY: CP
CHECKED BY: EFT
PROJECT NO: 9211-02
SCALE: NTS

EDWARD F. TANER
REGISTERED PROFESSIONAL ENGINEER
CIVIL
No. 9903
Nevada State Board of Engineering and Architecture

DT1
20 OF 21 SHEETS
DRAWING NO. 1074-4642-1