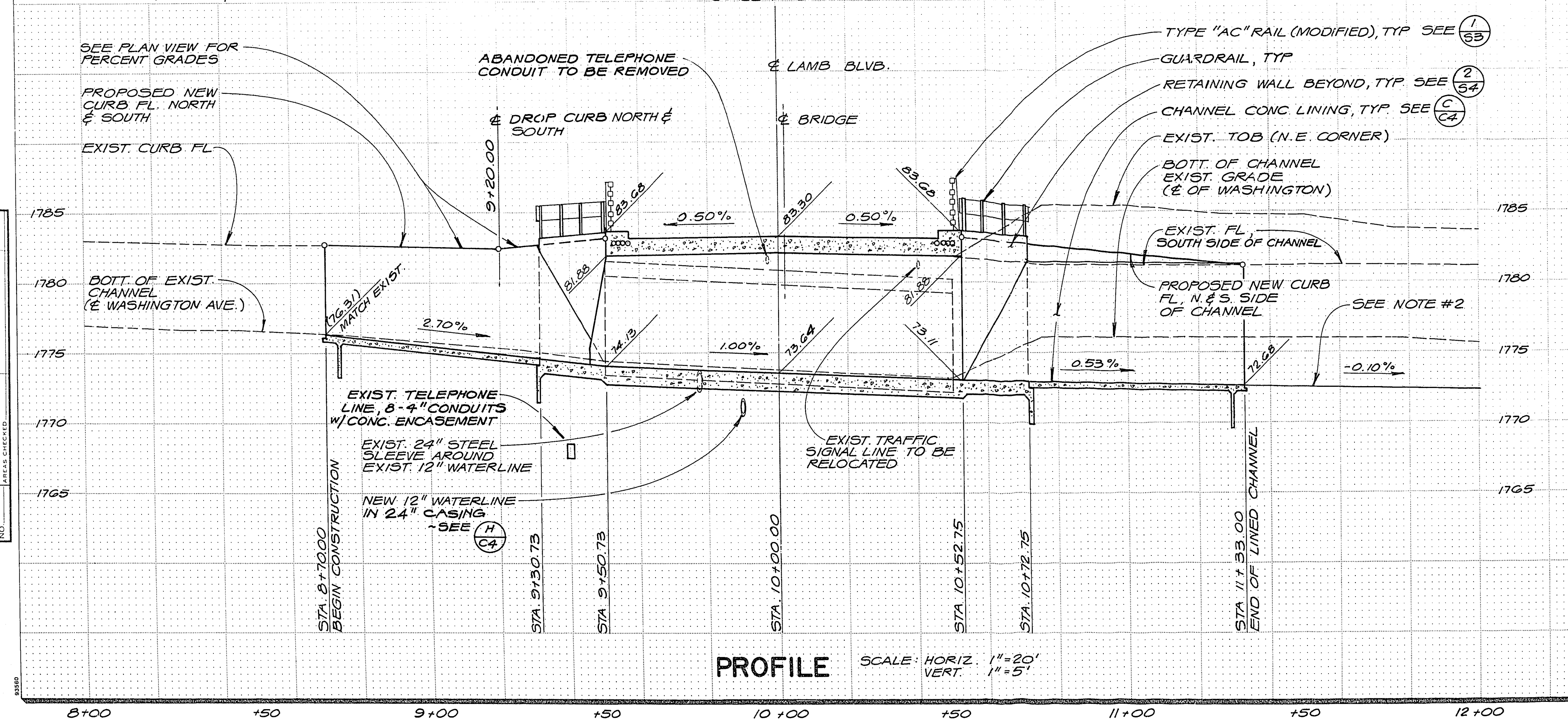
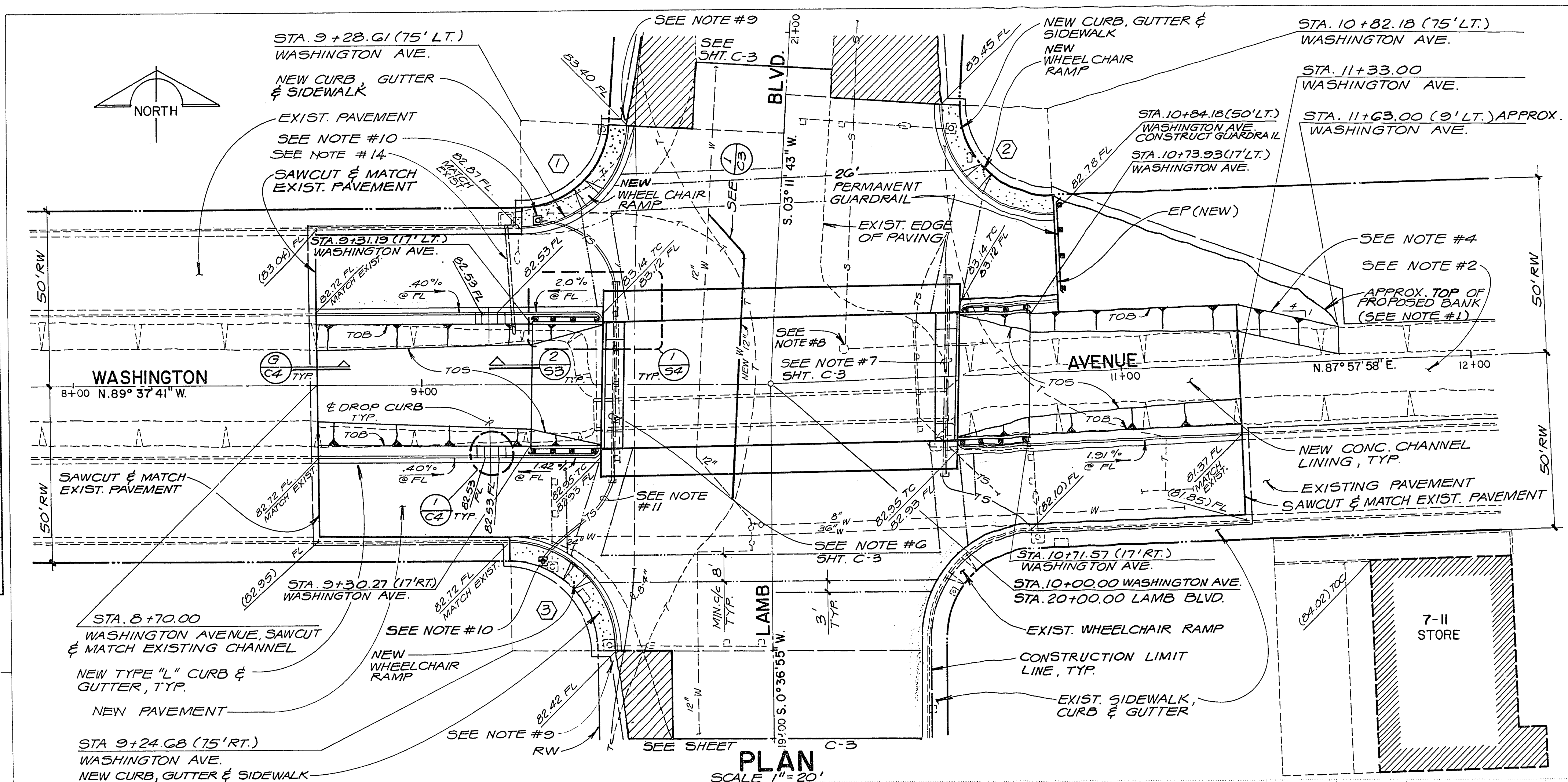


DATE: _____ BY: _____
 FINAL SURVEY SURVEYED PLOTTED
 NOTE BOOK TEMPLATE
 NO. _____ AREAS CHECKED

DATE: _____ BY: _____
 ORIGINAL SURVEY SURVEYED PLOTTED
 NOTE BOOK TEMPLATE
 NO. _____ AREAS CHECKED



| CURVE DATA | | | | | | | | |
|---------------|--------------|--------|--------|--------|--------------|--------|--------|--------|
| PROPERTY LINE | BACK OF CURB | | | | BACK OF CURB | | | |
| | Δ | R | T | L | Δ | R | T | L |
| ① | 87°10'36" | 25.00' | 23.80' | 38.04' | 87°10'36" | 30.00' | 28.56' | 45.64' |
| ② | 95°13'45" | 25.00' | 27.39' | 41.55' | 95°13'45" | 30.00' | 32.87' | 49.86' |
| ③ | 90°14'36" | 25.00' | 25.11' | 39.38' | 90°14'36" | 30.00' | 30.13' | 47.25' |

- NOTES:**
- WASHINGTON AVE. STA. 10+82.18 TO STA. 11+63.00 NORTH SIDE OF CHANNEL, NORTH OF CONCRETE SIDEWALK AND NORTH OF TOP OF DITCH BANK, EXCAVATE CUT SLOPES 2 HORIZONTAL TO 1 VERTICAL OR FLATTER TO LINES AND GRADES SHOWN.
 - WASHINGTON AVE. STA. 11+33.00 TO APPROXIMATE STA. 21+00.00, EXCAVATE CHANNEL BOTTOM AT 0.10% GRADE TO DAYLIGHT. EXCAVATE CHANNEL AS A "M" DITCH WITH SIDE SLOPES OF 1 TO 1 OR FLATTER, WHERE THE BANK TOP WIDTH SHALL NOT EXCEED 34.0 FEET.
 - SEE BRIDGE PLAN ON SHT. S-2 FOR STATION AND ELEVATION OF BRIDGE STRUCTURE ALONG WASHINGTON AVE. AND LAMB BLVD.
 - CHANNEL BANK TRANSITION: CONSTRUCT TOP OF CHANNEL BANK TRANSITION AT 4:1 FROM EDGE OF CONCRETE TO EXISTING TOP OF DITCH BANK.
 - SEE SHT. C-3 FOR INFORMATION NOT SHOWN ALONG LAMB BLVD.
 - SEE DET. SHT. C-4 FOR SECTION AND DETAILS OF ROADWAY AND CHANNEL.
 - ALL EXISTING UTILITIES ARE NOT SHOWN IN THIS PLAN. SEE SHEET C-1
 - EXISTING SEWER MANHOLE RECORDED ELEVATIONS: TMH = 1782.26, INV. = 1769.01.
 - PAVE FROM BACK OF CURB FOR 2 FEET PARALLEL TO STREET CENTERLINE THEN START TRANSITION.
 - CONSTRUCT NEW TRAFFIC SIGNAL BASE AND PLACE STREET LIGHT ADAPTER AND STREET LIGHT ON BASE.
 - INSTALL NEW TRAFFIC SIGNAL CONDUITS PER CITY OF LAS VEGAS TRAFFIC ENGINEER'S DIRECTION.
 - DURING CONSTRUCTION TRAFFIC SIGNALS SHALL BE KEPT IN OPERATION.
 - CONTRACTOR SHALL COORDINATE WITH THE CITY OF LAS VEGAS PLACING OF A.C. PAVING TO ALLOW NEW TRAFFIC CONTROL DEVICES TO BE INSTALLED AS REQUIRED. TRAFFIC SIGNAL DESIGN TO BE PROVIDED BY THE CITY OF LAS VEGAS.
 - RELOCATED STORM DRAIN EXCAVATION AND BACKFILL TO CONFORM TO SECTION 208 OF THE SPECIFICATIONS.

LEGEND

| | |
|--|---|
| | CONSTRUCTION LIMIT LINE |
| | EDGE OF NEW PAVEMENT |
| | PROPERTY LINE |
| | NEW |
| | THERMOPLASTIC MARKING FOR CROSSWALKS (SEE TECHNICAL SPECIFICATIONS) |
| | CENTERLINE |
| | EXISTING |
| | TOP OF CONCRETE |
| | TOP OF CURB |
| | TOP OF SIDEWALK |
| | EDGE OF PAVEMENT |
| | FLOWLINE |
| | TOE OF SLOPE |
| | TOP OF BANK |
| | EXISTING |
| | RIGHT OF WAY |
| | ELEVATION |
| | EXIST. ELEVATION |
| | TEMPORARY PAVING |

DATE: 12-10-86 REVISION: 4-10-87 REVISED PER CITY COMMENTS

GUNNY, BRIZENDINE & POGGEMEYER
ENGINEERS
 1064 E. SARAH AVE. LAS VEGAS, NEVADA 89101
 625 WINDYBROOK DR. RENO, NEVADA 89501
 (702) 735-5108
 (702) 827-1701

JOB NUMBER: 85080
 DESIGNED BY: WC
 DRAWN BY: CG
 CHECKED BY: LVC
 DATE: 10-17-85

CITY OF LAS VEGAS, NEVADA
LAMB BOULEVARD / WASHINGTON AVENUE CHANNEL STRUCTURE

SHEET NUMBER: 3 OF 4

33-117