

**Marnell Corrao Associates**  
 Architects  
 Interior Designers  
 Managers  
 Constructors



DATE: 4 MARCH 1986  
 SCALE: 1" = 10'-0"  
 JOB NO: 107-VI-04  
 REVISION: 15.00

**OFFSITE IMPROVEMENTS,  
 STREET LIGHT RELOCATION PLAN,  
 & GRADING PLAN**

**SOUTHEAST PARKING LOT**

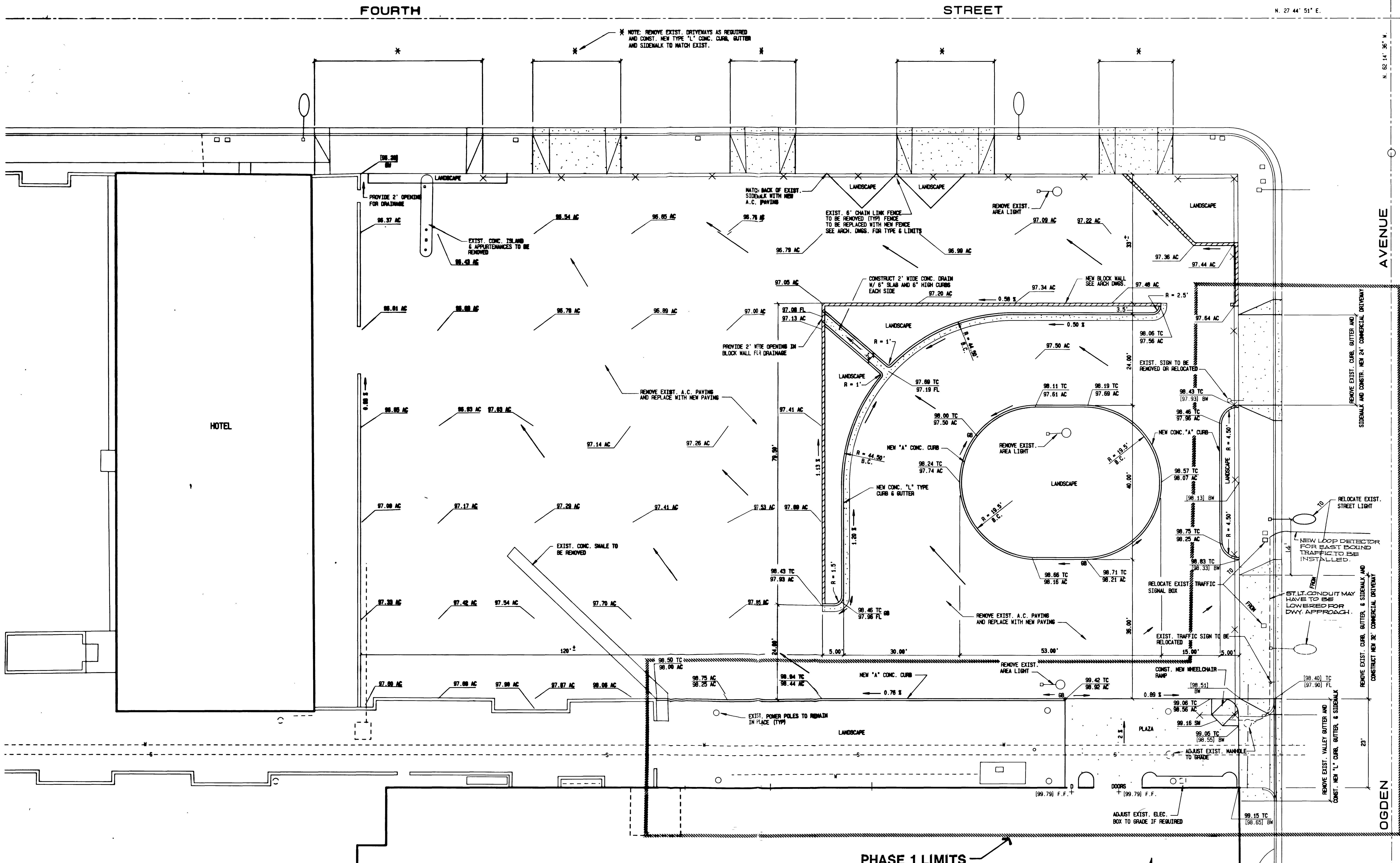
SHEET  
**C-3**  
 OF

107-VI-04

4495 South Polaris Avenue  
 Las Vegas, Nevada 89103  
 702-799-9419

107-VI-04

158



**APPROVALS**

*J.P. Oates* 4/10/86  
 TRAFFIC ENGINEER DATE

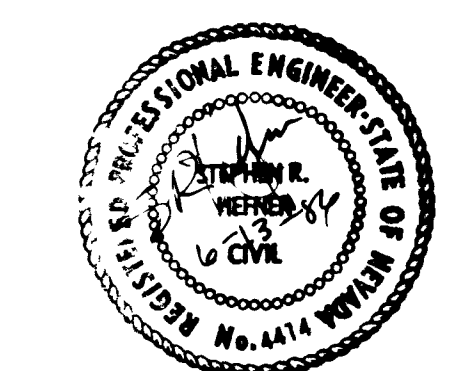
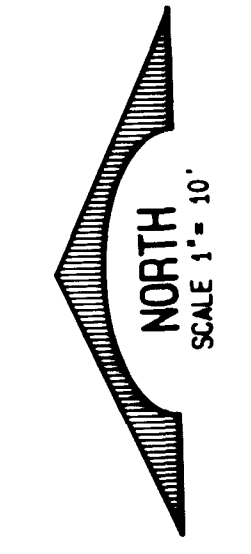
*Eugene Regens* 4/10/86  
 ELECTRICAL COORDINATOR DATE

*W.H. Eugene Regens*  
 ELECTRICAL SUPERVISOR DATE

*E. J. Springer* 6/23/86  
 CITY ENGINEER DATE

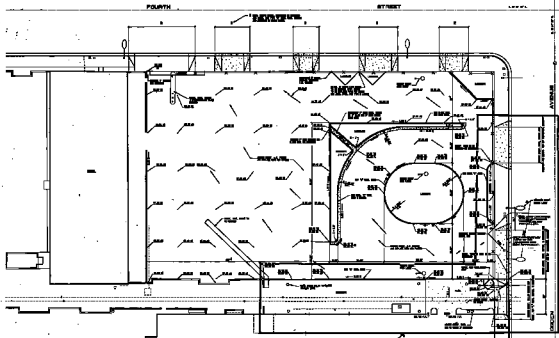
LADY LUCK CASINO

**NOTE**  
 ALL CURVE RADIUS DATA SHOWN  
 ARE BACK OF CURB



**HEFNER ENGINEERING**  
 CIVIL ENGINEERING • DESIGN  
 LAND PLANNING & DEVELOPMENT  
 4441 South Polaris Avenue, Las Vegas, Nevada 89103  
 Phone: (702) 799-1900

LADYSE



APPROVALS

J. C. S. [Signature]  
 [Signature]  
 [Signature]  
 [Signature]

UPPER LEVEL

FRONT YARD



COUNTY OF SACRAMENTO  
 STREET LIGHT RELOCATION PLAN  
 & GRADING PLAN  
 INTERESTED PARTIES LOT

**Lady & Lark**  
 ARCHITECTS

Marnell Corneo Associates  
 Architect  
 1000 J Street  
 Sacramento, CA 95811  
 916.441.1111