

Avoid cutting underground utility lines. It's costly.  
**Call before you Dig**  
 1-800-227-2600

**CONSTRUCTION NOTES**

- |   |  |
|---|--|
| 1 CONSTRUCT OVERPAVE PER TYPICAL SECTION (SEE PLAN) | 7 SAW-CUT AND REMOVE 1.0' OF EXISTING A.C. UNLESS OTHERWISE NOTED ON PLANS |
| 2 RELOCATE EXISTING STORM DRAIN PIPE (SEE PLAN)     | 8 INSTALL W-8 SIGN AT 50' OC FOR LENGTH OF TRANSITION                      |
| 3 NOT USED  |  |
| 4 NOT USED  |  |
| 5 NOT USED  |  |
| 6 NOT USED  |  |

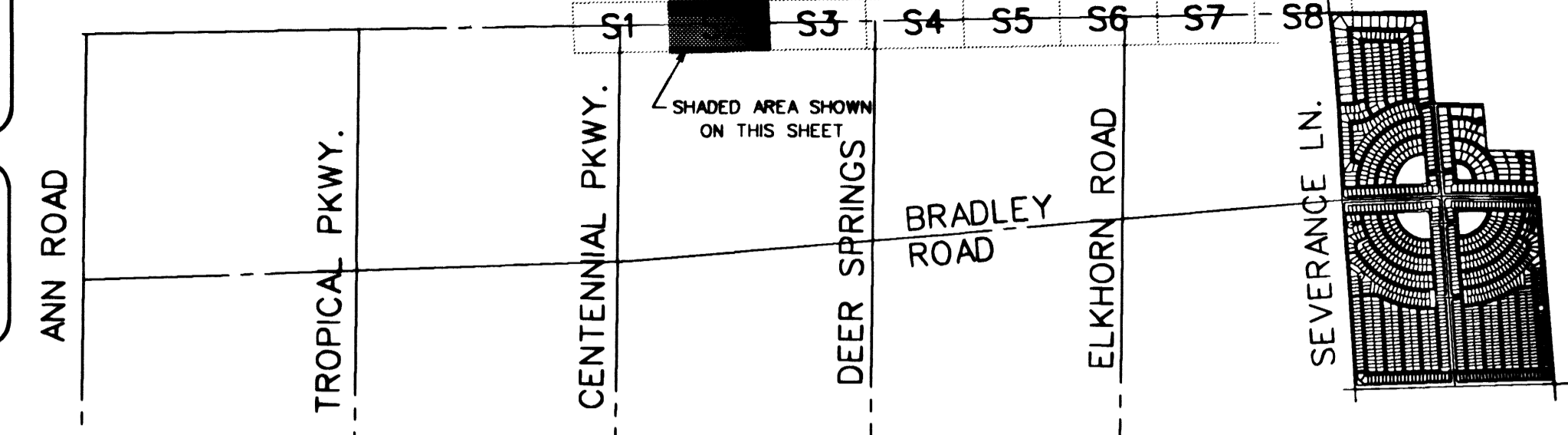
**BASIS OF BEARING**

BEING THE NORTH LINE OF THE LOT 63, AS IT IS SHOWN ON THE RECORD OF SURVEY IN FILE 52, OF SURVEYS, PAGE 70, OFFICIAL RECORDS OF CLARK COUNTY, NEVADA, WHICH BEARS: SOUTH 85°04'37" WEST.

**BENCHMARK**

BEING THE CITY OF NORTH LAS VEGAS BM #518118 (1LV90-13E4), 50 WEST OF BLM BRASS CAP # DECATUR BLVD. & FARM ROAD, ELEVATION = 707.9639 METERS = 2,322.71 FEET (N.A.V.D. 1988) (ELEVATION BASED ON CITY OF LAS VEGAS VERTICAL DATUM)

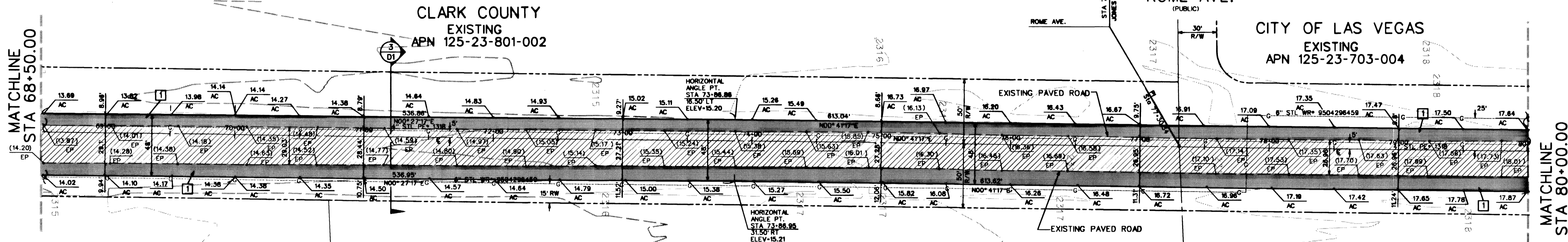
JONES BLVD.



**KEY MAP**

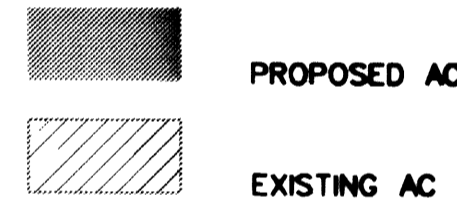
NOT TO SCALE

MATCHLINE STA 68+50.00



MATCHLINE STA 80+00.00

**PAVING LEGEND**



CLARK COUNTY  
 EXISTING  
 APN 125-23-801-002

EXISTING  
 APN 125-24-401-001  
 CITY OF LAS VEGAS

ROME AVE.  
 (PUBLIC)

CITY OF LAS VEGAS  
 EXISTING  
 APN 125-23-703-004

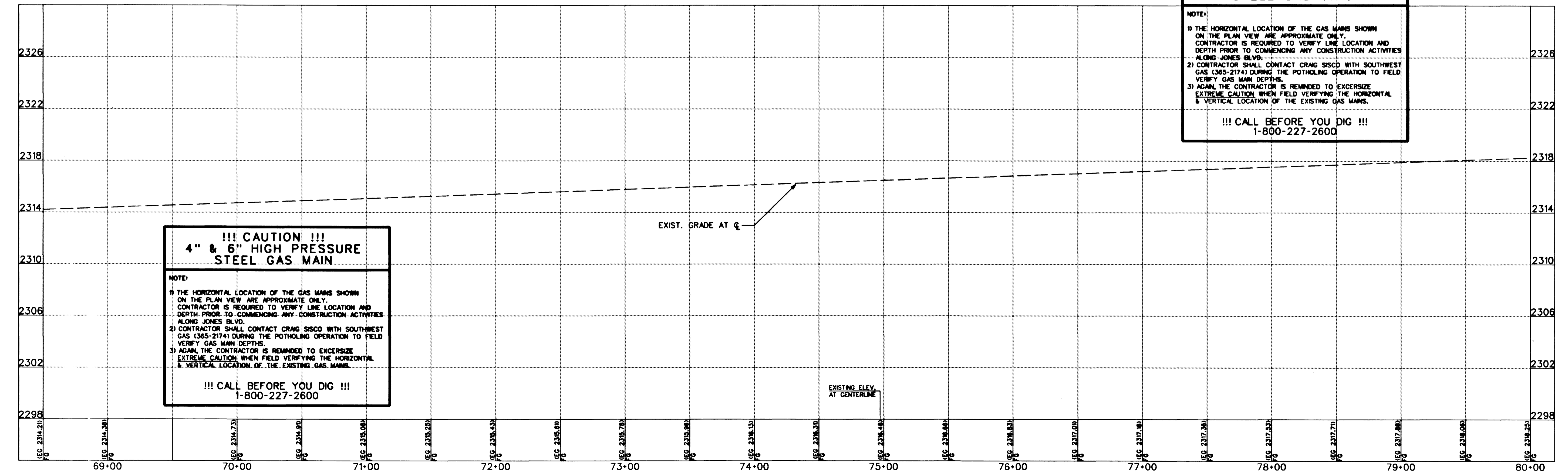
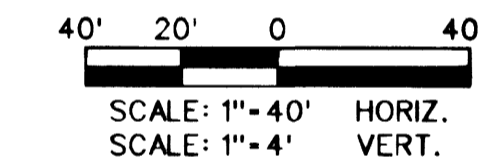
EXISTING  
 APN 125-24-302-014  
 CITY OF LAS VEGAS

JONES BOULEVARD  
 (PUBLIC)

**!!! CAUTION !!!**  
**4" & 6" HIGH PRESSURE STEEL GAS MAIN**

NOTE:  
 1) THE HORIZONTAL LOCATION OF THE GAS MAINS SHOWN ON THE PLAN VIEW ARE APPROXIMATE ONLY. CONTRACTOR IS REQUIRED TO VERIFY LINE LOCATION AND DEPTH PRIOR TO COMMENCING ANY CONSTRUCTION ACTIVITIES ALONG JONES BLVD.  
 2) CONTRACTOR SHALL CONTACT GRIG SISCO WITH SOUTHWEST GAS (365-2174) DURING THE POTHOLING OPERATION TO FIELD VERIFY GAS MAIN DEPTHS.  
 3) AGAIN, THE CONTRACTOR IS REMINDED TO EXERCISE EXTREME CAUTION WHEN FIELD VERIFYING THE HORIZONTAL & VERTICAL LOCATION OF THE EXISTING GAS MAINS.

**!!! CALL BEFORE YOU DIG !!!**  
 1-800-227-2600



**!!! CAUTION !!!**  
**4" & 6" HIGH PRESSURE STEEL GAS MAIN**

NOTE:  
 1) THE HORIZONTAL LOCATION OF THE GAS MAINS SHOWN ON THE PLAN VIEW ARE APPROXIMATE ONLY. CONTRACTOR IS REQUIRED TO VERIFY LINE LOCATION AND DEPTH PRIOR TO COMMENCING ANY CONSTRUCTION ACTIVITIES ALONG JONES BLVD.  
 2) CONTRACTOR SHALL CONTACT GRIG SISCO WITH SOUTHWEST GAS (365-2174) DURING THE POTHOLING OPERATION TO FIELD VERIFY GAS MAIN DEPTHS.  
 3) AGAIN, THE CONTRACTOR IS REMINDED TO EXERCISE EXTREME CAUTION WHEN FIELD VERIFYING THE HORIZONTAL & VERTICAL LOCATION OF THE EXISTING GAS MAINS.

**!!! CALL BEFORE YOU DIG !!!**  
 1-800-227-2600

DATE: Jan. 17, 2001	FILE: m
TIME: 10:4:10Z	
<b>THE GATES, L.L.C.</b> 7201 WEST LAKE MEAD BOULEVARD LAS VEGAS, NEVADA 89128	
<b>LYNBROOK CONSULTANTS, INC.</b> 12631 MOVIEN BLVD. LAS VEGAS, NEVADA 89138	
<b>PLAN AND PROFILE</b> STA 70+00.00 - 80+00.00 <b>OFFSITE-PAVING PLANS</b> (JONES BOULEVARD)	
DRAWN BY: GAV/RS	DESIGNED BY: GB/GAVD
CHECKED BY: MPV	PROJECT NO:
SCALE: 1"=4' VERT.	SCALE: 1"=40' HORIZ.
SEAL 	
SHEET <b>S2</b> 6 OF 16 SHEETS CLV DRAWING NO. 107 Y-4576-J0	