

Call before
you Dig
1-800-227-2600

Call before
you Overhead
1-702-593-6111

BASIS OF BEARING

BEING THE NORTH LINE OF THE LOT 63, AS IT IS SHOWN ON THE RECORD OF SURVEY IN FILE 52 OF SURVEYS, PAGE 70, OFFICIAL RECORDS OF CLARK COUNTY, NEVADA, WHICH BEARS SOUTH 85°04'37" WEST.

BENCHMARK

BEING THE CITY OF NORTH LAS VEGAS B.M. #51918 (N.V.90-13E4), 50' WEST OF BLM BRASS CAP @ DECATUR BLVD. & FARM ROAD, ELEVATION = 707.9639 METERS = 2,322.71 FEET (N.A.V.D. 1988) (ELEVATION BASED ON CITY OF LAS VEGAS VERTICAL DATUM)



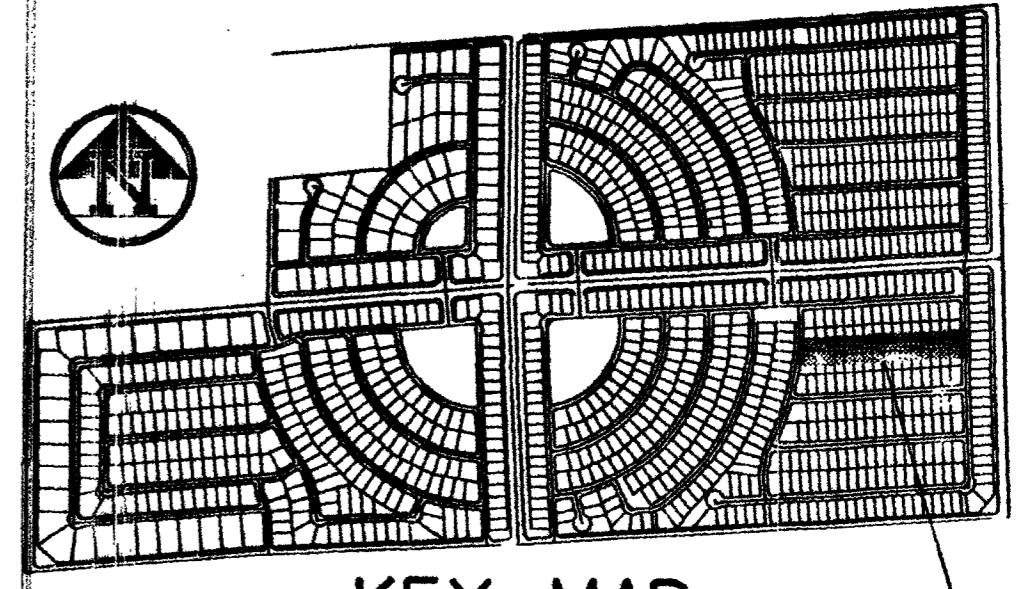
SCALE: 1" = 40' HORIZ.
SCALE: 1" = 4' VERT.

THE DEVELOPERS OF NEVADA
7448 W. Sahara Ave., Suite 101
Las Vegas, NV 89117
(702) 222-1410

*Construction
has been proceeding
w/epoor*

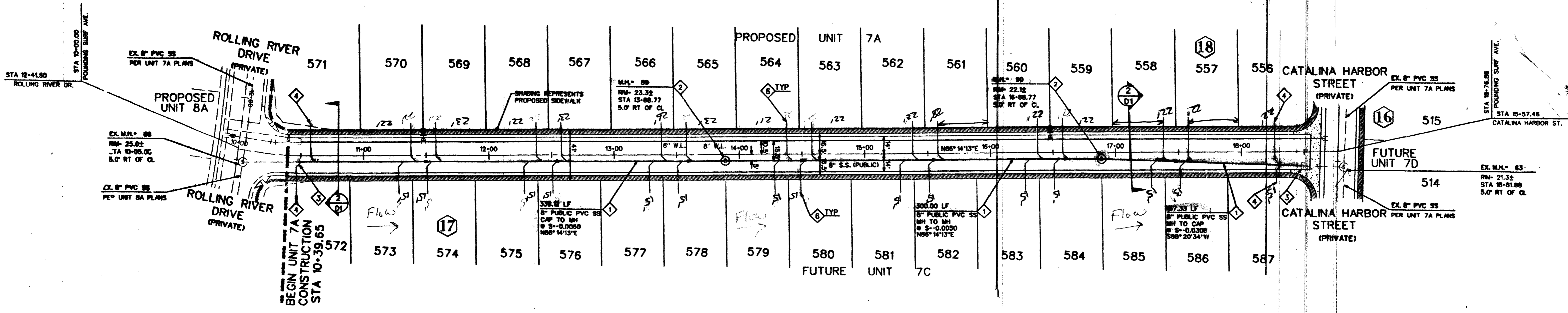
SEWER CONSTRUCTION NOTES

- ◊ INSTALL 8" SEWER MAIN TRENCH SECTION BACKFILL PER D.C.S.W.C.S. NO. SD-16
- ◊ INSTALL 48" SANITARY SEWER MANHOLE PER DESIGN AND CONSTRUCTION STANDARDS FOR WASTEWATER COLLECTION SYSTEMS PLATE SD-1
- ◊ REMOVE CAP & CONNECT TO EX. 8" STUB
- ◊ INSTALL 4" SEWER LATERAL W/ 4" WYE. LOCATION PER TYPICAL LOT DETAIL "A" ON SHEET D1 UNLESS NOTED OTHERWISE
- ◊ INSTALL 8" CAP
- ◊ INSTALL 4" SEWER LATERAL W/ 4" WYE. LOCATION PER TYPICAL LOT DETAIL "B" ON SHEET D1 UNLESS NOTED OTHERWISE
- ◊ BACK WATER VALVE

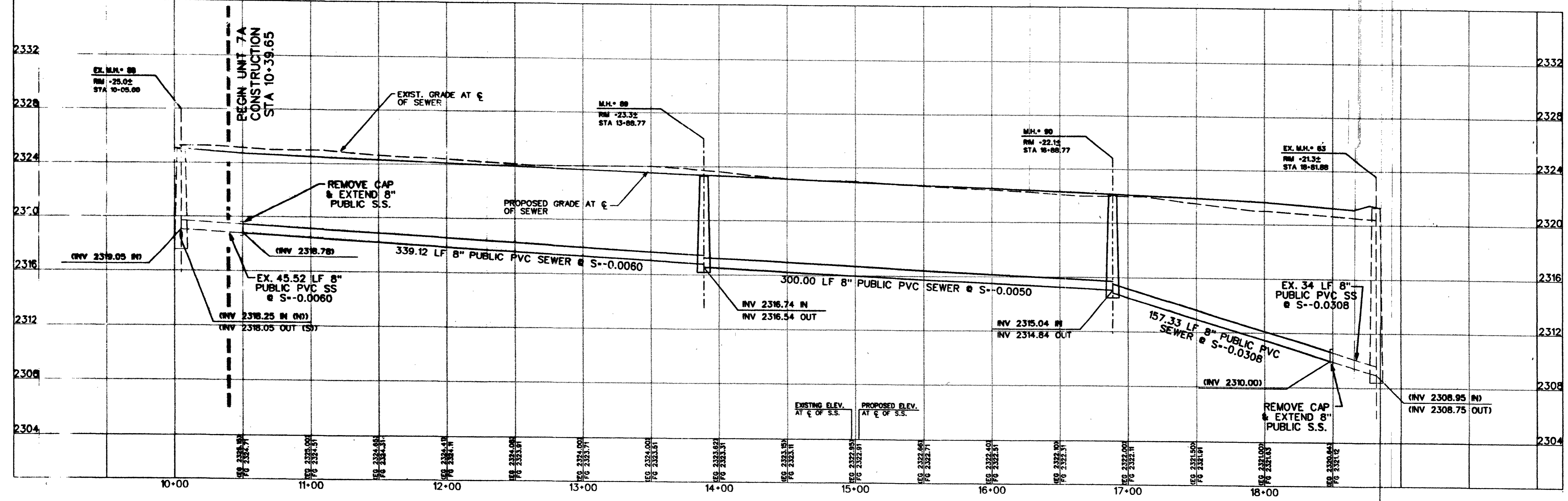


KEY MAP

SHADED AREA SHOWN ON THIS SHEET



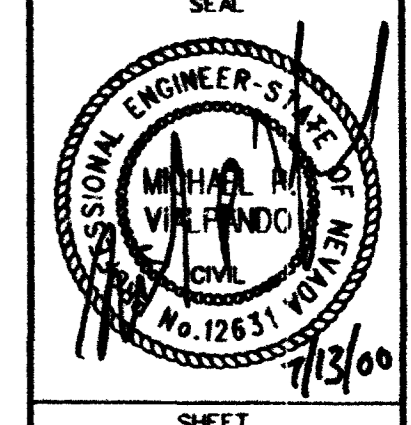
POUNDING SURF AVENUE
(PRIVATE DRIVE W/P.U.E. & CLV SEWER EASEMENT)



DATE: Jul. 21, 1999
TIME: 09:54
FILE: m:\98902403\land\unit7b\Apr40s01.dgn
6280 S. Valley View Blvd.
Suite 200
Las Vegas, NV 89118
Tel: (702) 368-3008
Fax: (702) 368-0047

THE GATES, L.L.C.
7201 WEST LANE MEAD BOULEVARD
SUITE 210
LAS VEGAS, NEVADA 89128

**SANITARY SEWER
PLAN AND PROFILE
POUNDING SURF AVE.
STA 10+39.66-18+76.88**



SHEET
6 OF 7 SHEETS
CLV DRAWING NO.
3074-4576-7B

47414