

Call before  
you dig  
1-800-227-2000

Call before  
you Overhead  
1-702-593-6111

### BASIS OF BEARING

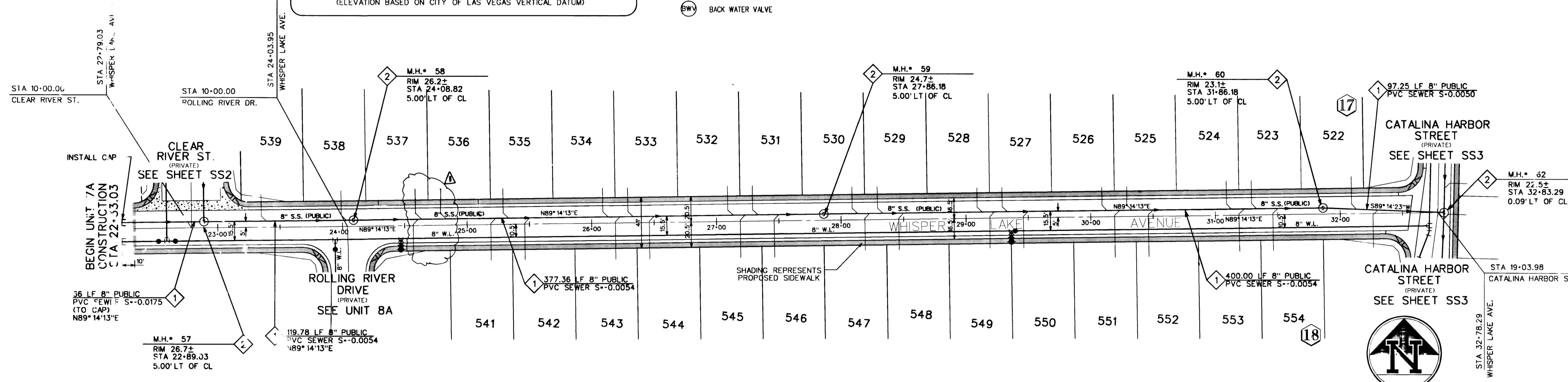
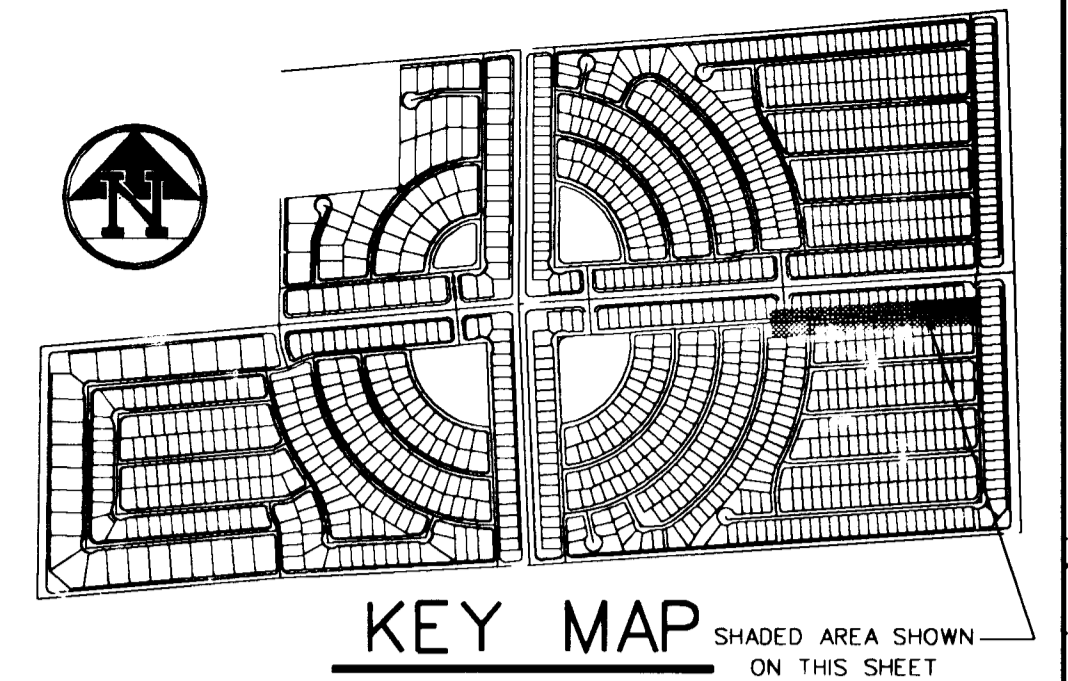
BEING THE NORTH LINE OF THE LOT 63, AS IT IS SHOWN ON THE RECORD OF SURVEY IN FILE 52, OF SURVEYS, PAGE 70, OFFICIAL RECORDS OF CLARK COUNTY, NEVADA, WHICH BEARS SOUTH 85°04'37" WEST.

### BENCHMARK

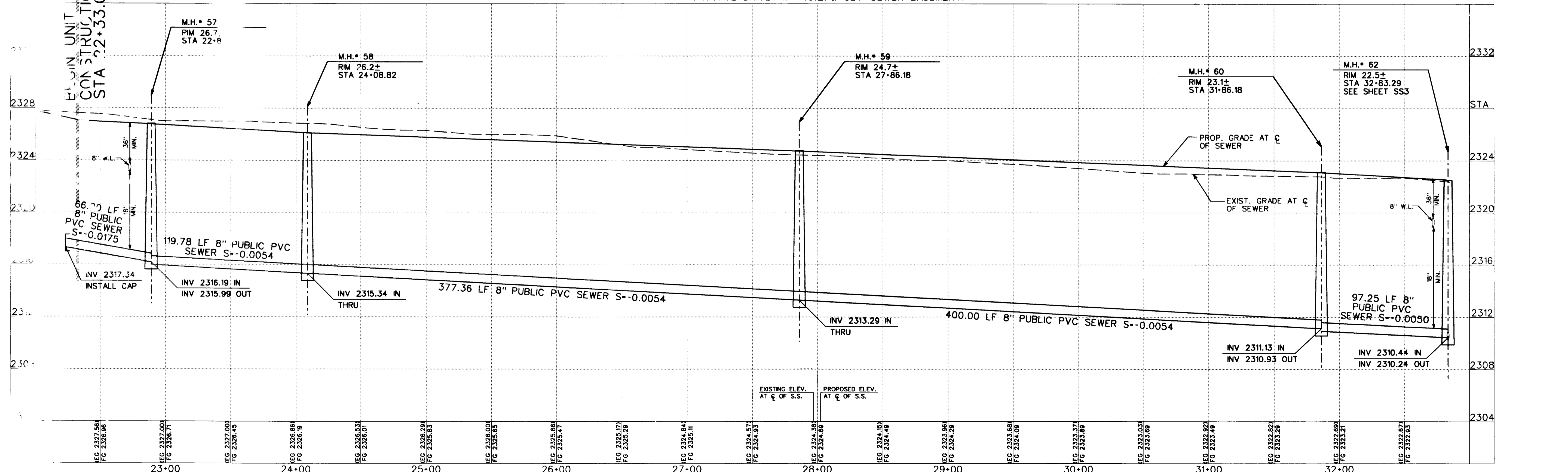
BEING THE CITY OF NORTH LAS VEGAS BM \*518118 (1LV90-13E4), 50' WEST OF BLM BRASS CAP @ DECATUR BLVD. & FARM ROAD, ELEVATION = 707.9639 METERS = 2,322.71 FEET. (N.A.V.D. 1988) (ELEVATION BASED ON CITY OF LAS VEGAS VERTICAL DATUM)

### SEWER CONSTRUCTION NOTES

- ◆ INSTALL 8" SEWER MAIN TRENCH SECTION BACKFILL PER D.C.S.W.C.S. NO. SD-16
- ◆ INSTALL 48" SANITARY SEWER MANHOLE PER DESIGN AND CONSTRUCTION STANDARDS FOR WASTEWATER COLLECTION SYSTEMS PLATE SD-1
- ◆ REMOVE CAP & CONNECT TO EX. 8" STUB
- ◆ INSTALL 4" SEWER LATERAL W/ 4" WYE. LOCATION PER TYPICAL LOT DETAIL "A" ON SHEET D1 UNLESS NOTED OTHERWISE
- ◆ INSTALL 8" CAP
- ◆ INSTALL 4" SEWER LATERAL W/ 4" WYE. LOCATION PER TYPICAL LOT DETAIL "B" ON SHEET D1 UNLESS NOTED OTHERWISE
- ⊖ BWV BACK WATER VALVE



### WHISPER LAKE AVENUE (PRIVATE DRIVE W/ P.U.E. & CLV SEWER EASEMENT)



1914 20399

DATE: Apr. 13, 1999  
 TIME: 15:34:19  
 FILE: n:\98902403\land\unit7a\pr40s01.dgn

THE GATES, L.L.C.  
 7001 WEST LAKE MEAD BOULEVARD  
 SUITE 200  
 LAS VEGAS, NEVADA 89128

CONSULTANTS, INC.  
 6280 S. Valley View Blvd.  
 Suite 200  
 Las Vegas, NV 89118  
 Tel: (702) 368-3008  
 Fax: (702) 368-0047

SANITARY SEWER  
 PLAN AND PROFILE  
 WHISPER LAKE AVENUE  
 STA 22-33.03-32-78.29  
 LYNBROOK  
 UNIT 7A

DRAWN BY: GAV/RS  
 DESIGNED BY: GB/GA/ED/FT  
 CHECKED BY: MPV

PROJECT NO: 3074-4576-7A

SHEET  
 SS1  
 7 OF 11 SHEETS  
 DRAWING NO: 3074-4576-7A

SCALE: 1"=4' HORIZ.  
 1"=40' VERT.

11/3/99