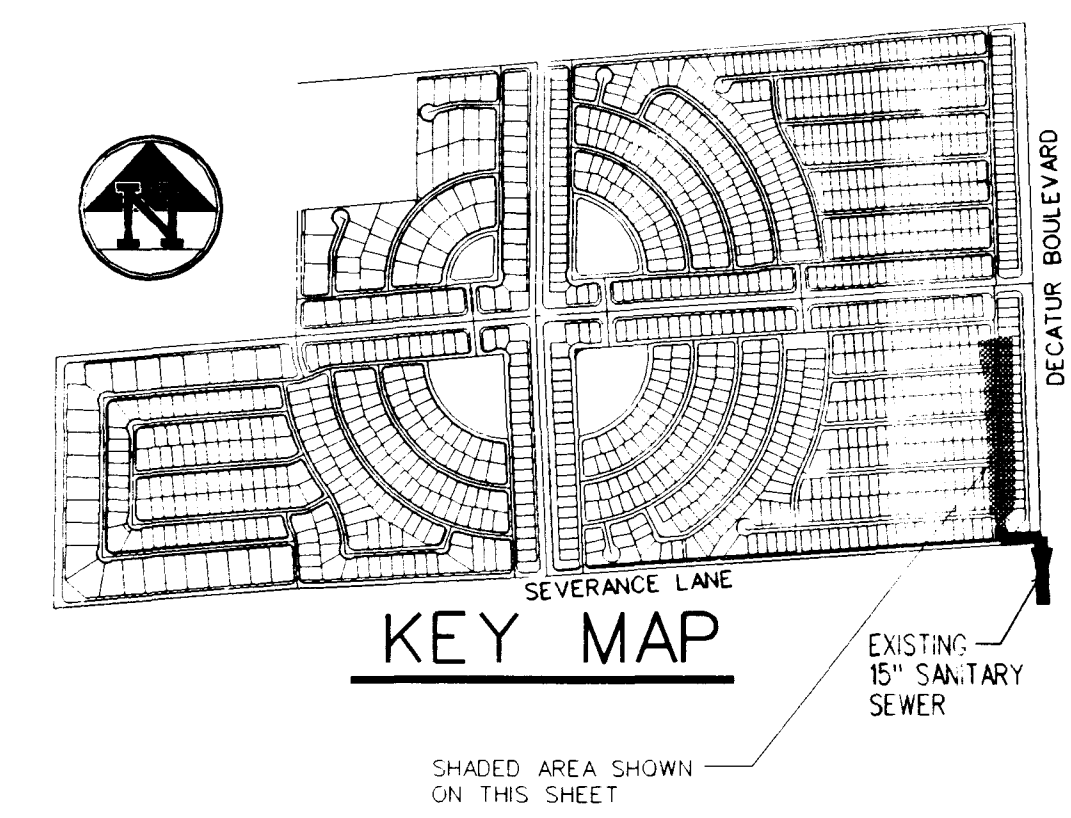
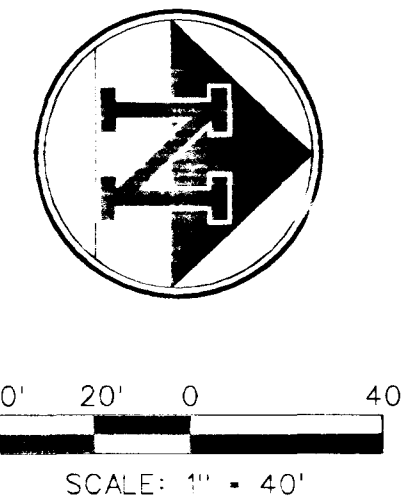


Avoid cutting underground utility lines. It's costly.
Call before you Dig
 1-800-227-2600

Avoid cutting underground utility lines. It's costly.
Call before you Overhead
 1-702-593-6111

BASIS OF BEARING
 BEING THE NORTH LINE OF THE 1/2" X 1/2" S. SHOWN ON THE RECORD SURVEY IN FILE OF THE SURVEYS PAGE 70, OFFICIAL RECORDS OF CLARK COUNTY, NEVADA, WHICH BEARS SOUTH 40° 04' 37" WEST.

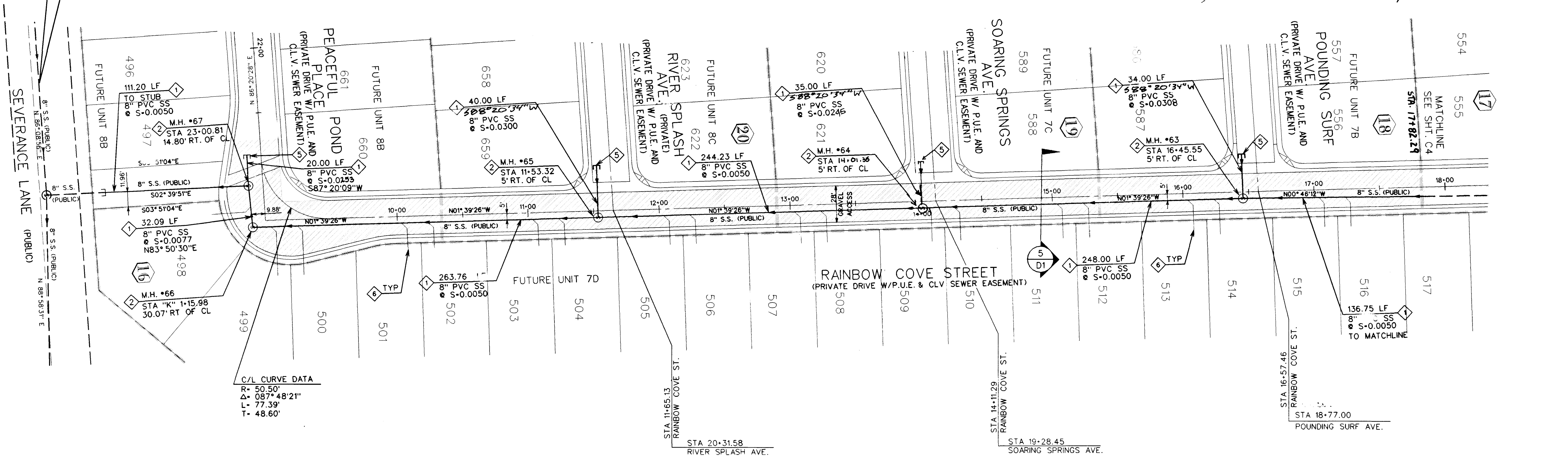
BENCHMARK
 BEING THE CORNER OF NORTH LAS VEGAS E.M. #21318 (1907-1924), 50' ALONG THE S. LINE OF DECATUR BLVD. & FARM ROAD, ELEVATION 4702.10 METERS ± 2.31 (15' FEET ± 0.0075) (ELEVATION BASED ON CITY OF LAS VEGAS VERTICAL DATUM)



SEWER CONTRIBUTIONS
 AVERAGE FLOW: 0.007 MGD
 PEAK FLOW: 0.023 MGD

LAS VEGAS FIRE DEPARTMENT
 FIRE FLOW IS 1500 GPM AT 20 PSI RESIDUAL PRESSURE.
 BASED ON:
 SQUARE FOOTAGE: 3,600 S.F. (MAX)
 BUILDING HEIGHT: 24' (MAX)
 NUMBER OF STORIES: 2 (MAX)
 OCCUPANCY: SINGLE FAMILY
 FULL AUTOMATIC FIRE SPRINKLERS: NO
 RECEIVED BY: *[Signature]*
 DATE: 2-22-99

PROPOSED 8" SEWER MAIN PER LYNBROOK-PUBLIC INFRASTRUCTURE PLANS BY CVL CONSULTANTS, INC. CLV DWG. NO. 107Y-4576



- WATER CONSTRUCTION NOTES**
- 1 INSTALL 8" PVC WATER LINE
 - 2 INSTALL 10" PVC WATER LINE
 - 3 INSTALL FIRE HYDRANT ASSEMBLY PER UNIFORM DESIGN AND CONSTRUCTION STANDARDS FOR WATER DISTRIBUTION SYSTEMS (UDS) PLATE NO. 7, AND THE LOCATION SHALL BE DETERMINED BY CLARK COUNTY AREA STD. DWG. 516 VALVES SHALL NOT BE LOCATED IN STREET VALLEY GUTTERS OR WITHIN PROPOSED CURB & GUTTER LOCATIONS.
 - 4 INSTALL 8" TEE
 - 5 INSTALL 8" - 90° ELBOW
 - 6 INSTALL 8" GATE VALVE. VALVES SHALL NOT BE LOCATED IN STREET VALLEY GUTTERS OR WITHIN THE PROPOSED CURB & GUTTER LOCATIONS.
 - 7 INSTALL 8" - 45° BEND
 - 8 INSTALL 8" - 22.5° BEND
 - 9 INSTALL 8" - 11.25° BEND
 - 10 INSTALL 12" X 8" X 8" TEE
 - 11 INSTALL 10" X 8" X 8" TEE
 - 12 INSTALL 12" WATER LINE
 - 13 8" CAP W/ 2" BLOWOFF ASSEMBLY (PER U.D.A.C.S. STD. PLATE NO. 4)
 - 14 3/4" WATER METER W/1" SERVICE LATERAL (PER U.D.A.C.S. STD. PLATE NO. 1B)
 - 15 INSTALL 8" X 8" X 6" TEE
 - 16 3/4" WATER METER W/1" SERVICE LATERAL (PER U.D.A.C.S. STD. PLATE NO. 1D)
 - (PRV) INDIVIDUAL PRESSURE REDUCING VALVE ALL LOTS

- SEWER CONSTRUCTION NOTES**
- 1 INSTALL 8" SEWER MAIN TRENCH SECTION BACKFILL PER D.C.S.W.C.S. NO. SD-16
 - 2 INSTALL 48" SANITARY SEWER MANHOLE PER DESIGN AND CONSTRUCTION STANDARDS FOR WASTEWATER COLLECTION SYSTEMS PLATE SD-1
 - 3 REMOVE CAP & CONNECT TO EX. 8" STUB
 - 4 INSTALL 4" SEWER LATERAL W/ 4" WYE. LOCATION PER TYPICAL LOT DETAIL "A" ON SHEET D1 UNLESS NOTED OTHERWISE
 - 5 INSTALL 8" CAP
 - 6 INSTALL 4" SEWER LATERAL W/ 4" WYE. LOCATION PER TYPICAL LOT DETAIL "B" ON SHEET D1 UNLESS NOTED OTHERWISE
 - (BWV) BACK WATER VALVE

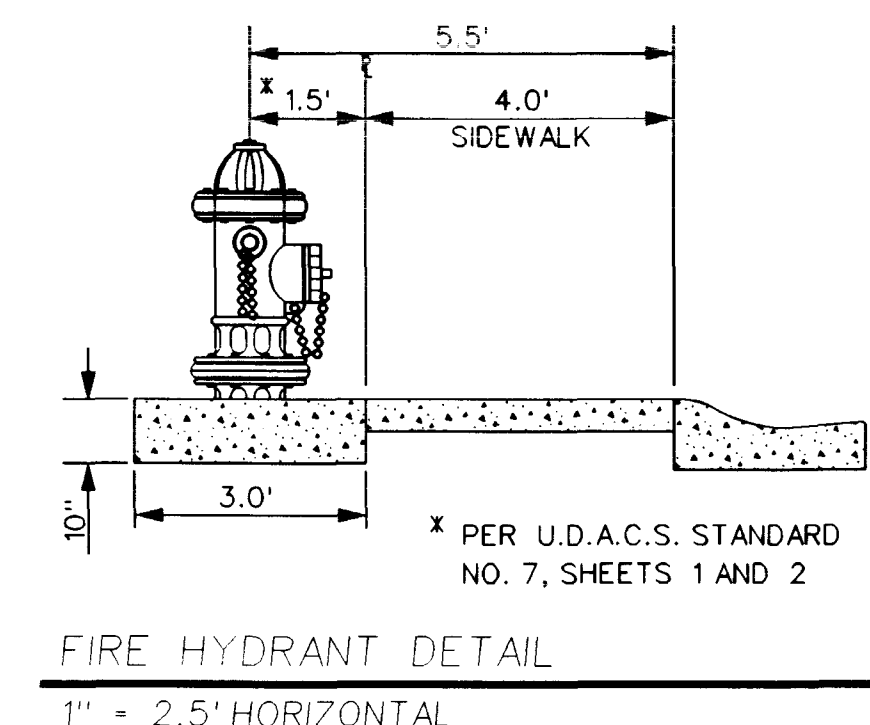
CONSTRUCTION NOTE
 ALL EXISTING UTILITY STRUCTURES WITHIN CONSTRUCTION AREA SHALL BE ADJUSTED TO MATCH FINISH GRADE (i.e. WY. BOX, W/M, ANNOUE BOX, FH, TEL. BOX, ETC.)

NOTE
 ALL DIMENSIONS TO UTILITIES ARE TO CENTERLINE OF PIPE UNLESS INDICATED OTHERWISE.
 CONTRACTOR SHALL VERIFY HORIZONTAL AND VERTICAL ALIGNMENT OF EXISTING UTILITIES AND NOTIFY THE DESIGN ENGINEER IMMEDIATELY OF ANY DISCREPANCIES PRIOR TO CONSTRUCTION.

- SIGNAGE NOTES**
- 1 INSTALL 30" X 30" R1-1 (STOP SIGN) UNLESS NOTED OTHERWISE
 - 2 INSTALL STREET NAME SIGN PER CLARK COUNTY AREA STANDARD DWG. NO. 250

FIRE DEPARTMENT APPROVAL
 APPROVAL BY THE FIRE DEPARTMENT HAVING JURISDICTION IS REQUIRED PRIOR TO OBTAINING FINAL APPROVAL FROM THE LVVMD.

SEWER CONNECTION NOTE
 A SEGMENT OF THE DOWNSTREAM SEWER SYSTEM THAT WILL SERVE THIS PROJECT HAS NOT BEEN COMPLETED AND/OR ACCEPTED FOR MAINTENANCE BY THE CITY OF LAS VEGAS. ANY WORK DONE ON THIS PROJECT PRIOR TO THE COMPLETION AND/OR ACCEPTANCE OF THE DOWNSTREAM SEWER SYSTEMS SHALL BE DONE AT THE DEVELOPER'S OWN RISK. THE CITY OF LAS VEGAS RESERVES THE RIGHT TO PREVENT THE PHYSICAL CONNECTION OF THIS PROJECT INTO THE DOWNSTREAM SEWER SYSTEM UNTIL ALL SEGMENTS HAVE BEEN COMPLETED AND ACCEPTED FOR MAINTENANCE, OR UNTIL SUCH TIME AS THEY HAVE BEEN DEEMED AVAILABLE FOR SERVICE.



THE GATES, L.L.C.
 7201 WEST LAKE MEAD BOULEVARD
 SUITE 720
 LAS VEGAS, NEVADA 89128
 4175 Cameron Street
 Suite A
 Las Vegas, NV 89103
 Tel: (702) 368-3008
 Fax: (702) 368-0047

UTILITY PLAN
LYNBROOK
UNIT 7A

SHEET: _____ TITLE: _____ SCALE: _____

DESIGNED BY: _____ CHECKED BY: _____ PROJECT NO: _____

SEAL: *[Professional Engineer Seal]*

SHEET C5 OF 11 SHEETS
 DRAWING NO. 3074-4576-7A

