

Avoid cutting underground utility lines. It's costly.
Call before you Dig
 1-800-227-2600

Avoid overhead power line contact. It's costly.
Call before you Overhead
 1-702-593-61M

SEWER CONSTRUCTION NOTES

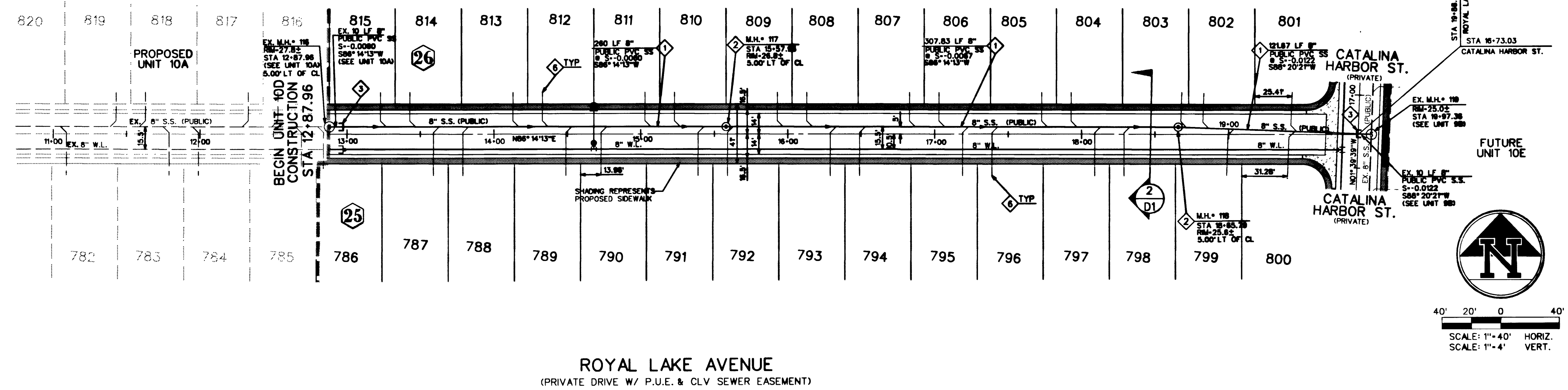
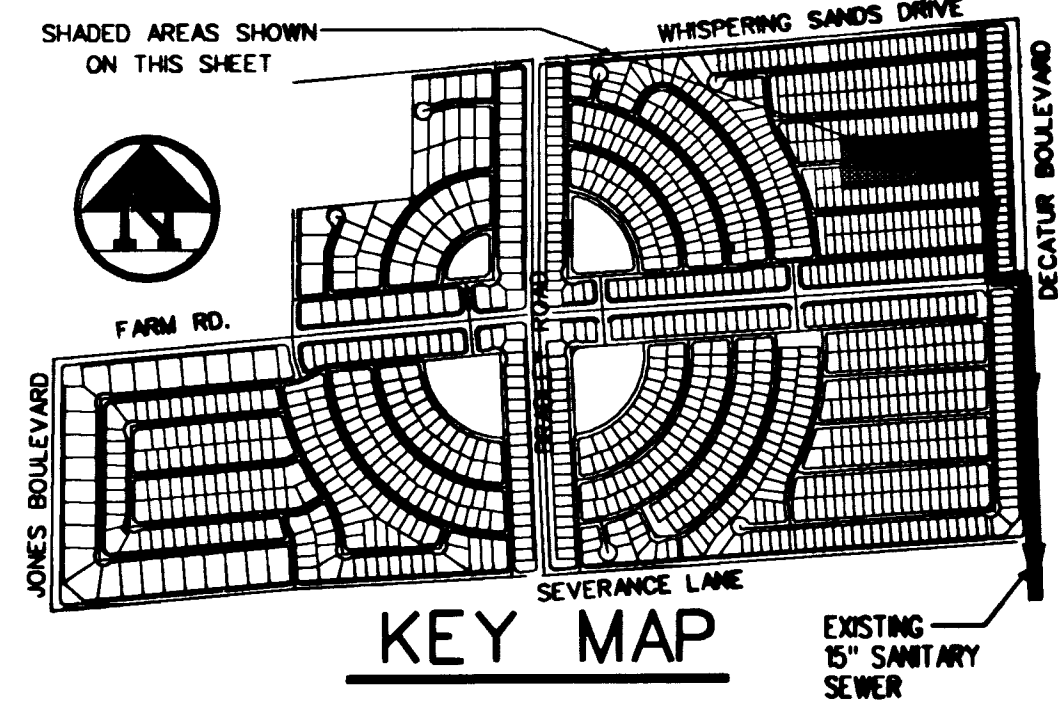
- ◆ INSTALL 8" SEWER MAIN TRENCH SECTION BACKFILL PER D.C.S.W.C.S. NO. SD-16
- ◆ INSTALL 4" SANITARY SEWER MANHOLE PER DESIGN AND CONSTRUCTION STANDARDS FOR WASTEWATER COLLECTION SYSTEMS PLATE SD-1
- ◆ REMOVE CAP & CONNECT TO EX. 8" STUB
- ◆ INSTALL 4" SEWER LATERAL W/ 4" WYE. LOCATION PER TYPICAL LOT DETAIL "A" ON SHEET D1 UNLESS NOTED OTHERWISE
- ◆ INSTALL 8" CAP
- ◆ INSTALL 4" SEWER LATERAL W/ 4" WYE. LOCATION PER TYPICAL LOT DETAIL "B" ON SHEET D1 UNLESS NOTED OTHERWISE
- ⊖ BACK WATER VALVE

BASIS OF BEARING

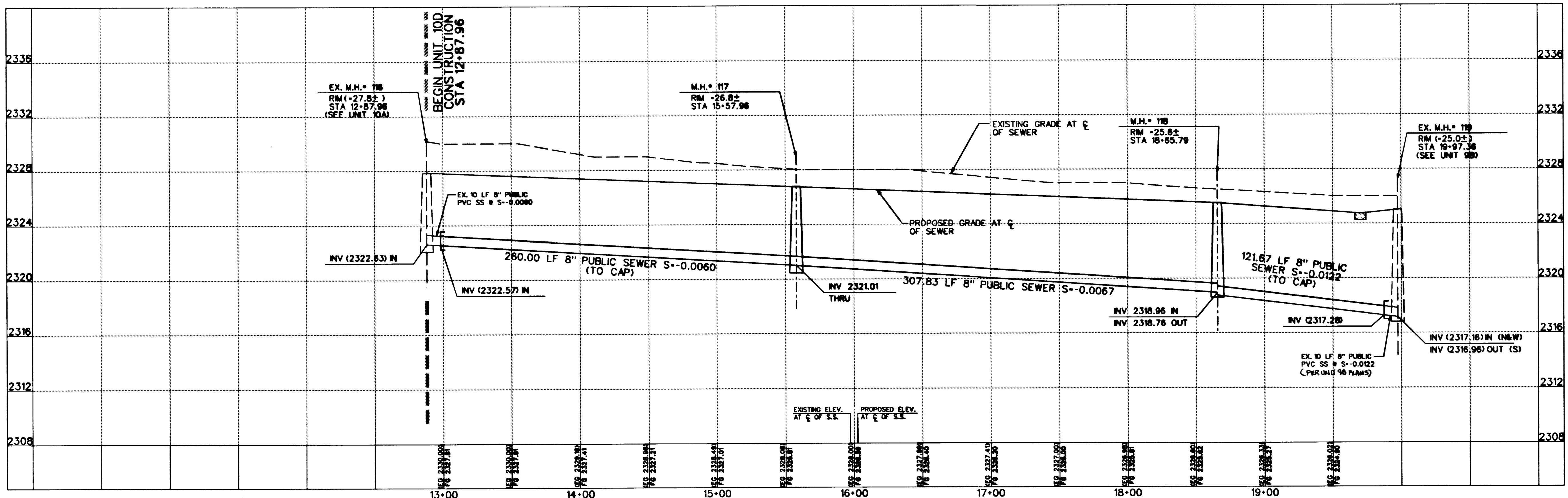
BEING THE NORTH LINE OF THE LOT 63, AS IT IS SHOWN ON THE RECORD OF SURVEY IN FILE 52 OF SURVEYS, PAGE 70, OFFICIAL RECORDS OF CLARK COUNTY, NEVADA, WHICH BEARS SOUTH 85°04'37" WEST.

BENCHMARK

BEING THE CITY OF NORTH LAS VEGAS BM #51818 (1LV90-13E4), 50' WEST OF BLM BRASS CAP @ DECATUR BLVD. & FARM ROAD. ELEVATION = 707.9639 METERS = 2,322.71 FEET (ON A.V.D. 1988) (ELEVATION BASED ON CITY OF LAS VEGAS VERTICAL DATUM)



ROYAL LAKE AVENUE
 (PRIVATE DRIVE W/ P.U.E. & CLV SEWER EASEMENT)



DATE: Feb. 21, 2001	FILE: 1621445	REV. DATE: BY: REVISION:
PROJECT: 6280 S. Valley View Blvd. Suite 200 Las Vegas, NV 89118 Tel: (702) 368-3008 Fax: (702) 368-0047	THE GATES, L.L.C. 7201 WEST LAKE MEAD BOULEVARD SUITE 210 LAS VEGAS, NEVADA 89128	REV. DATE: BY: REVISION:
S.S. PLAN AND PROFILE ROYAL LAKE AVENUE STA 12-87.96 - 19-98.36 LYNBROOK UNIT 10D		
DRAWN BY: CAZ/ED/RS	DESIGNED BY: GB/GA/ED/FT	PROJECT NO: SCALE: 1"=4' VERT. 1"=40' HORIZ.
CHECKED BY: MPV		
SHEET SS1 6 OF 7 SHEETS CLV DRAWING NO. 307Y-4576-10D		