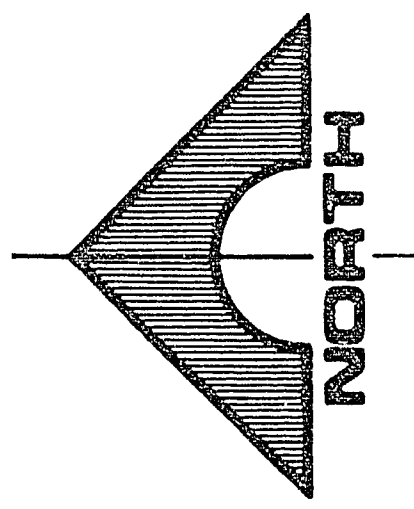


RELOCATE STREET LIGHT TO STA 10+83, 1.25' BACK OF CURB. INTERCEPT EXIST. CONDUIT & CONNECT TO EXIST. CIRCUIT. EXTEND CONDUIT TO CONDUIT IN BRIDGE STRUCTURE.

UTILITY POLE TO BE RELOCATED BY CENTRAL TELEPHONE CO.

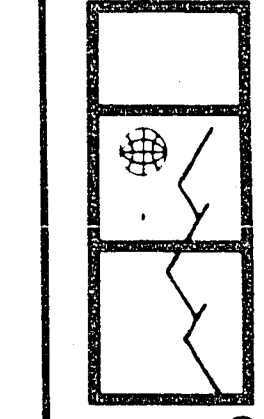
CHANNEL SLOPE LINING (TYP) SEE SHT. C-4
UTILITY POLE TO BE RELOCATED BY CENTRAL TELEPHONE CO. GUARDRAIL PER N.D.O.T. STD. L.S.G. R-81.1 (G12) 2'-3.1'-0" (G18)



SCALE: 1" = 40'

REV	DATE	DESCRIPTION
1	1-9-87	RAISED PILECAPS - REMOVED
2	1-9-87	FUTURE CHANNEL EXCAVATION
3	1-9-87	LINE
4	7-28-88	REMOVE EXIST. GRADE AND GRADE BREAK

RECOMMENDED
Jack H. Wallace
 2242 W. W. W. BLVD.
 LAS VEGAS, NEVADA 89102

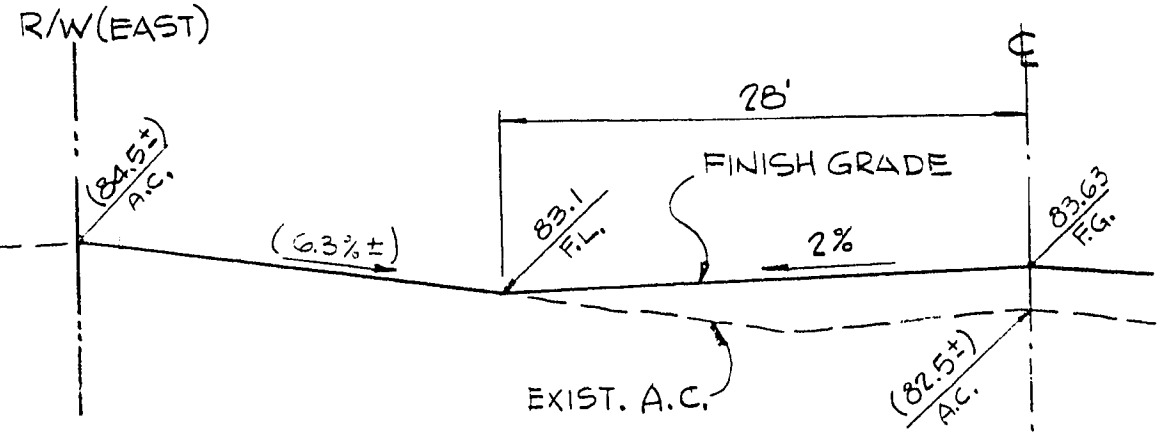
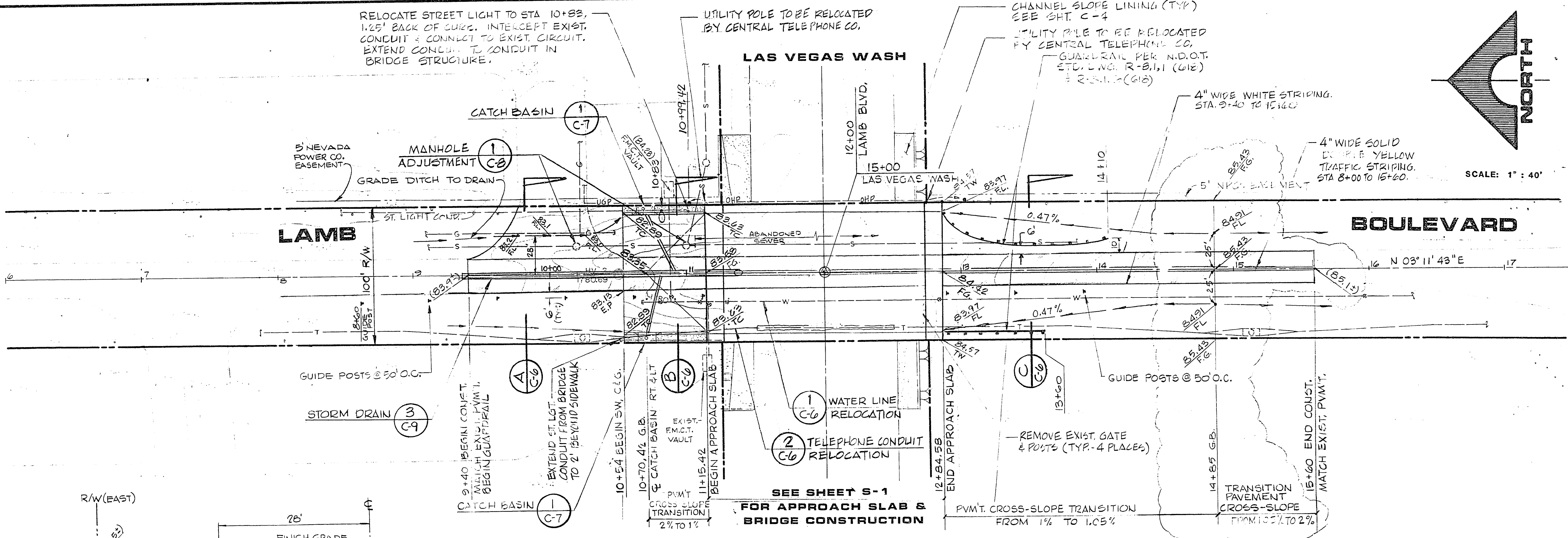


G. C. WALLACE
 Consulting Engineers, Inc.
 1555 South Rainbow Blvd. • Las Vegas, Nevada 89102 • 863-1200

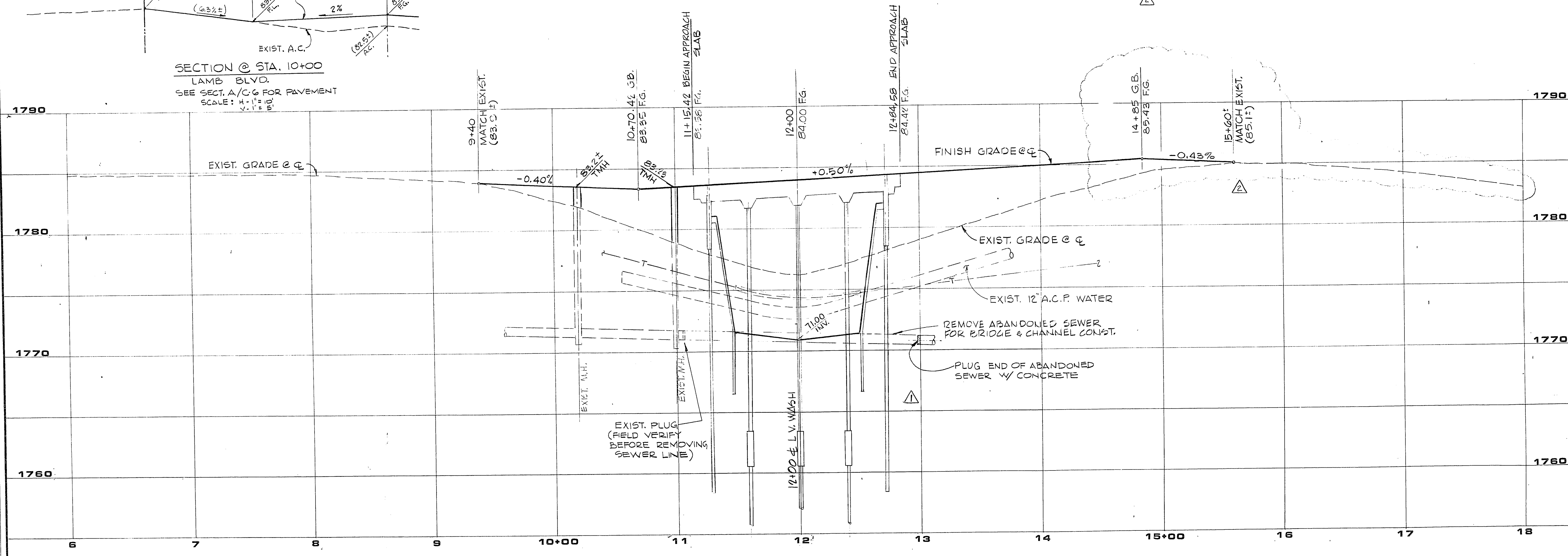
CITY OF LAS VEGAS DEPT. OF PUBLIC WORKS
 LAMB BLVD. / LAS VEGAS WASH BRIDGE
 LAMB BLVD.
 PLAN & PROFILE STA. 6+00 TO 18+00

SHEET
C-2
 OF 17 SHEETS

107-V1363
 8-3-193
 C.A.N. 060785



SECTION @ STA. 10+00
 LAMB BLVD.
 SEE SECT. A/C & FOR PAVEMENT
 SCALE: H. 1" = 10'
 V. 1" = 5'



PROFILE
 SCALE: HORIZ. 1" = 40'
 VERT. 1" = 4'

JOB NO. 412.222

884 DIETRICH POSTER