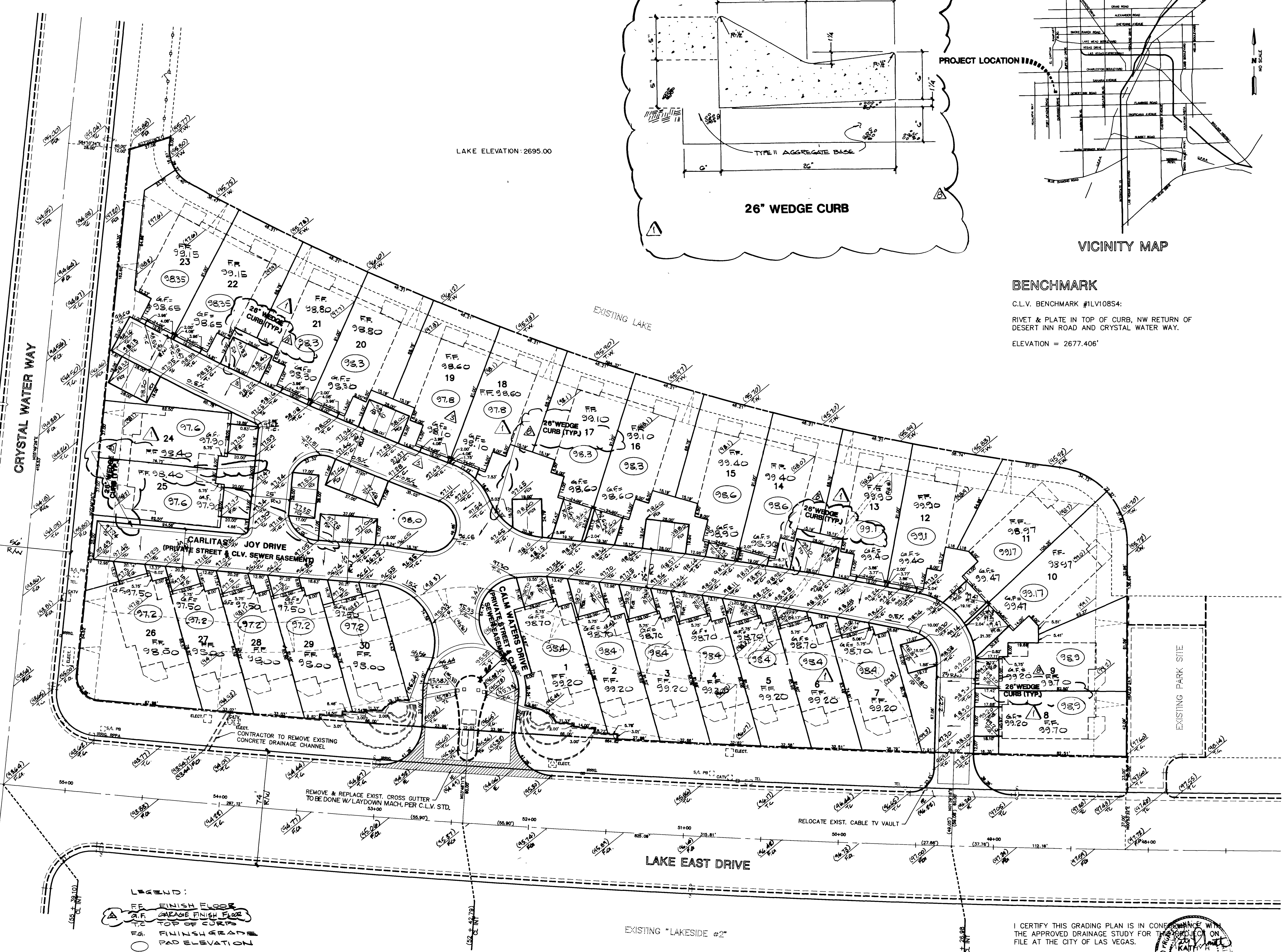
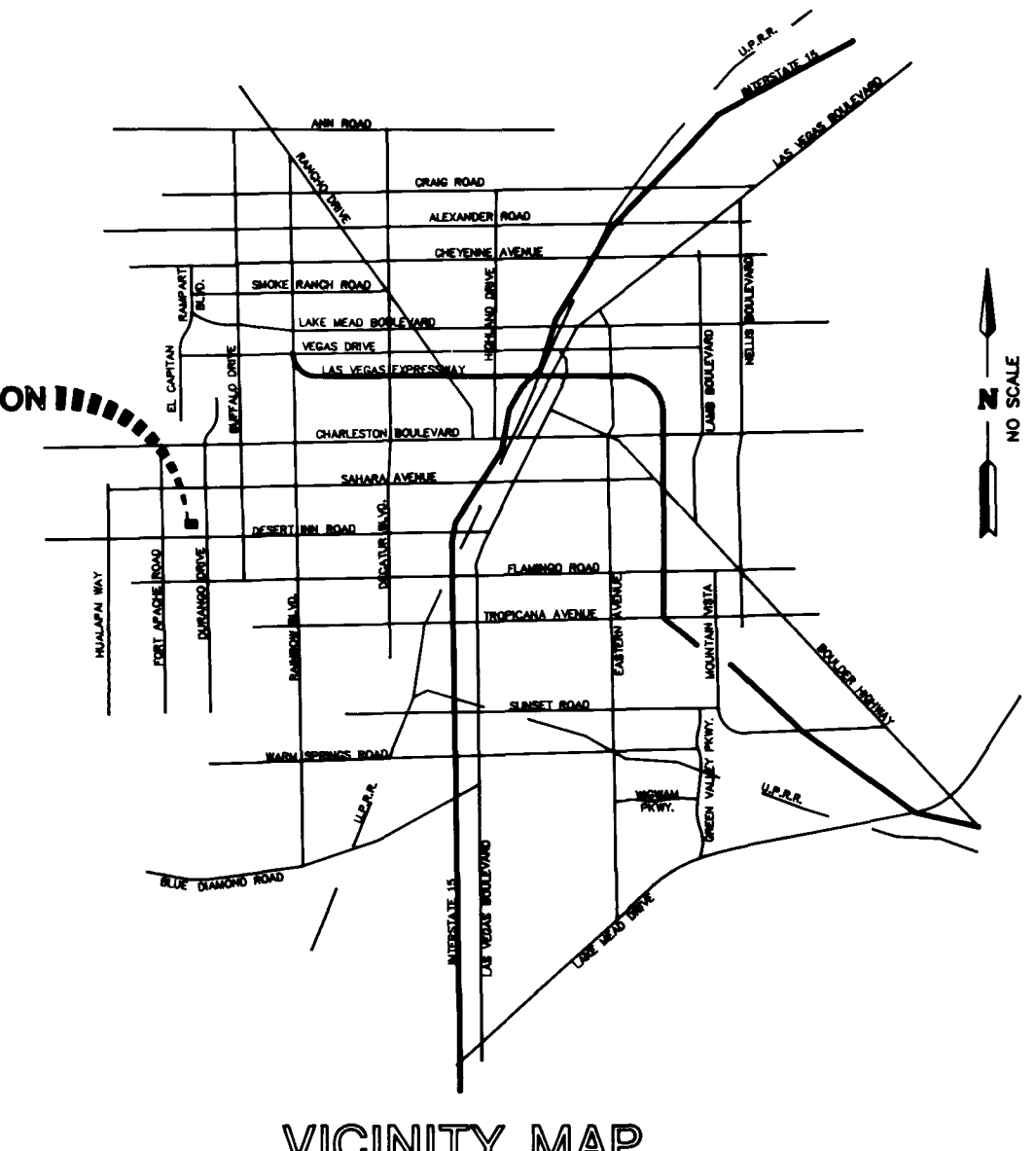
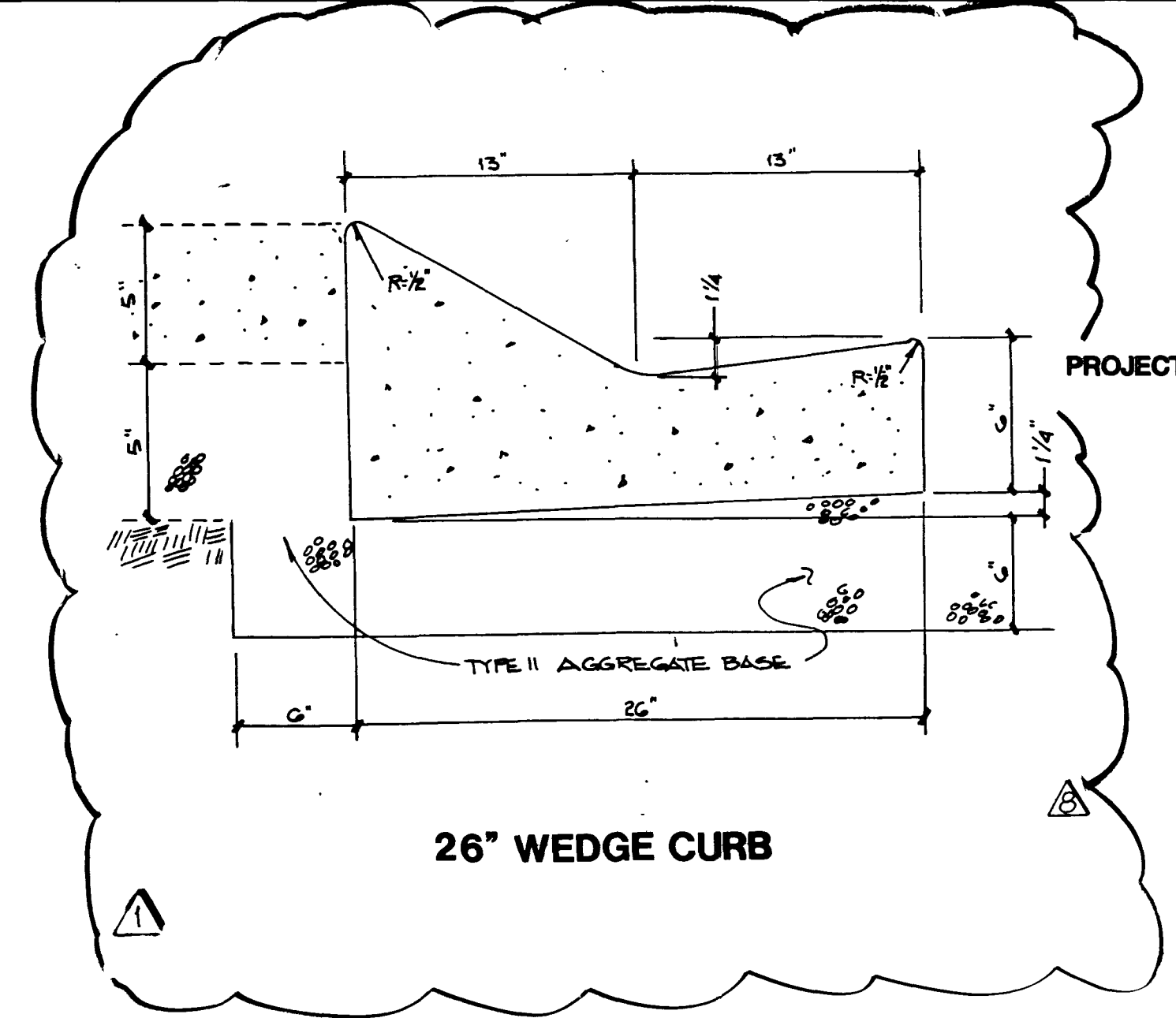


EXISTING "THE BLUFFS UNIT #2"



LAKE ELEVATION: 2695.00



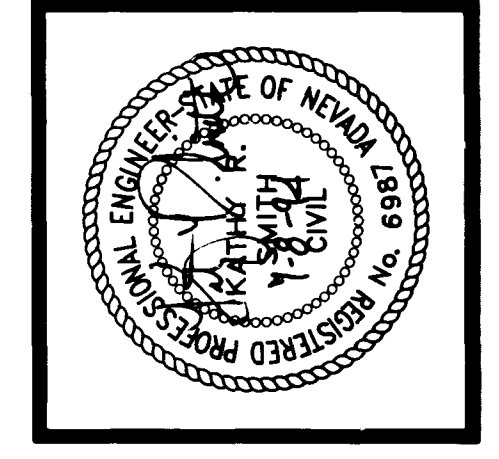
BENCHMARK
 C.L.V. BENCHMARK #1LV10854:
 RIVET & PLATE IN TOP OF CURB, NW RETURN OF
 DESERT INN ROAD AND CRYSTAL WATER WAY.
 ELEVATION = 2677.406'

LEGEND:
 FF FINISH FLOOR
 GF GARAGE FINISH FLOOR
 PG TOP OF CURB
 PG FINISH GRADE
 PE PAD ELEVATION

I CERTIFY THIS GRADING PLAN IS IN CONFORMANCE WITH THE APPROVED DRAINAGE STUDY FOR THIS PROJECT ON FILE AT THE CITY OF LAS VEGAS.
 KAGHY R. SMITH, P.E.
 11-17-128

DATE	BY	REVISION
02-17-04	CIF	ADDED NOTE FOR TYPICAL CURB (SEE SHEET 20) SHALL BE TYPE CURB
05-14-04	PA	REVISED TO 10' SIDE WALKWAY TRUCKING AREA
07-14-04	MP	REVISED TO 10' SIDE WALKWAY TRUCKING AREA
08-14-04	MP	REVISED TO 10' SIDE WALKWAY TRUCKING AREA
09-14-04	MP	REVISED TO 10' SIDE WALKWAY TRUCKING AREA
10-14-04	MP	REVISED TO 10' SIDE WALKWAY TRUCKING AREA
11-14-04	MP	REVISED TO 10' SIDE WALKWAY TRUCKING AREA
12-14-04	MP	REVISED TO 10' SIDE WALKWAY TRUCKING AREA

ROUGH GRADING PLAN
LAGUNA BAY TOWNHOME ESTATES



ESI ENGINEERS AND SURVEYORS INC.
 PLANNERS • CONSULTING ENGINEERS • SURVEYORS
 708 W. CHARLESTON BLVD. • LAS VEGAS, NEVADA 89102-3045
 W.O. # : 755-5810
 BY : KAGHY R. SMITH
 DATE : MAY 1994
 SCALE : 1" = 30'

21-60-08

11-17-128 1074-4354

