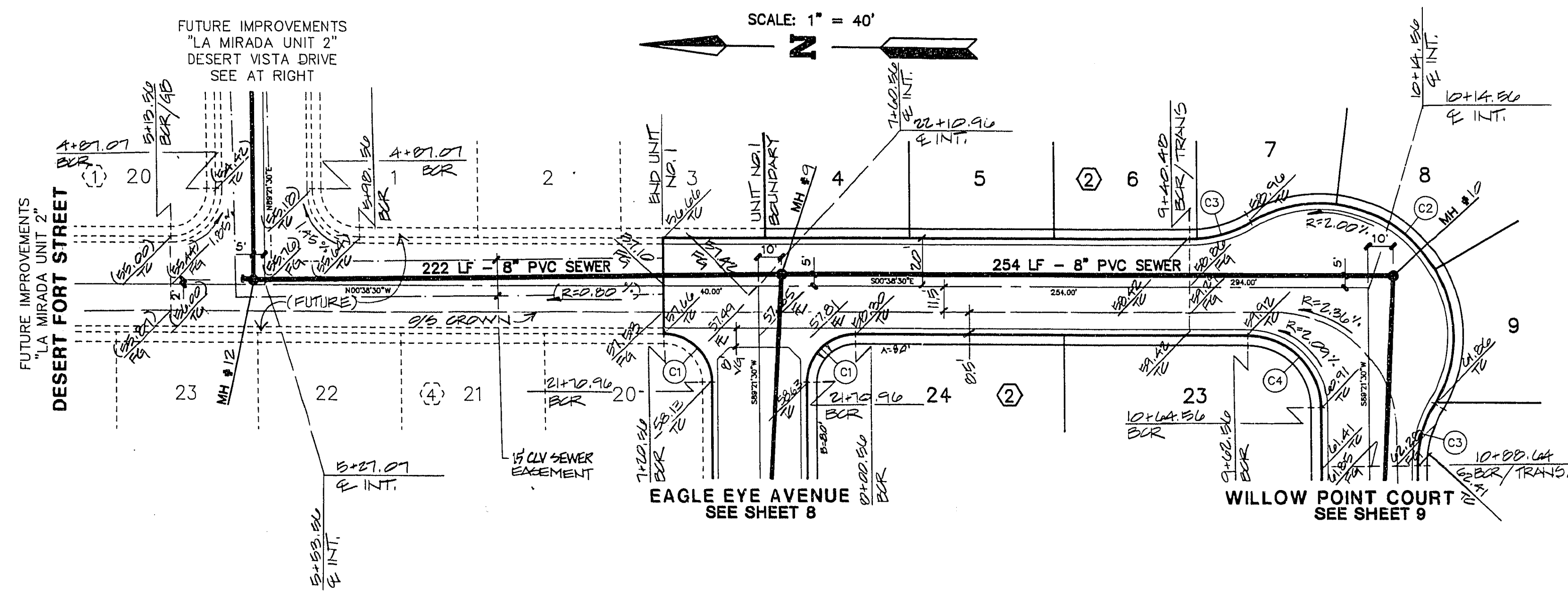


APPROVAL	REV	DATE	BY	REVISION
	1	12/14/93	CFA	REVISED GRADES PER GRADING PLAN REVISIONS.
	2	11/13/94	CFA	REVISED RAMP TRANSITION EMBELEMNT NOTE
	3	11/17/94	CFA	REVISED STREET NAME

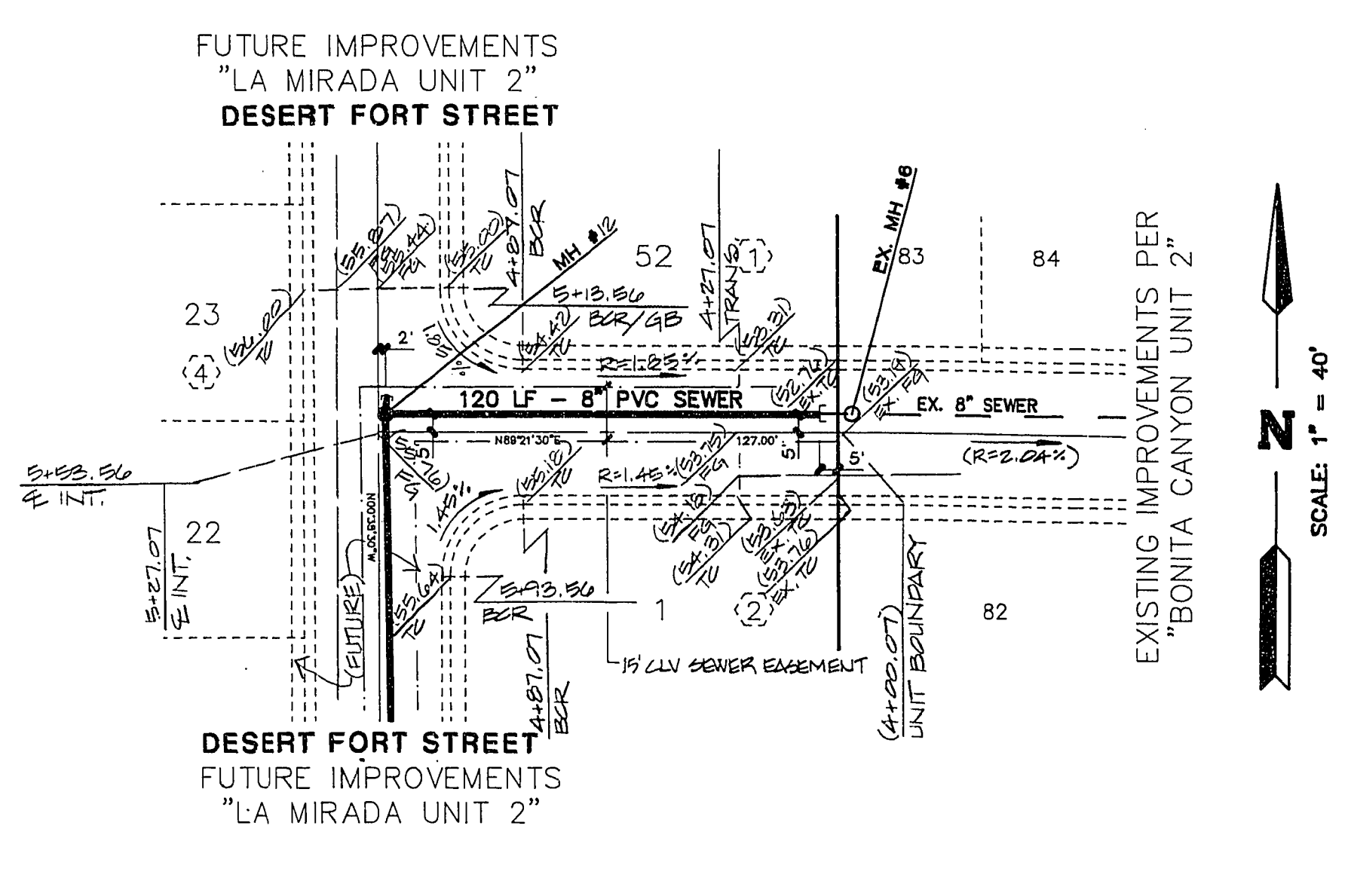
 ESI ENGINEERS AND SURVEYORS INC. PLANNERS • CONSULTING ENGINEERS • SURVEYORS 7088 W. CHAMBERLAIN BLVD., SUITE 100, LAS VEGAS, NV 89129	

6 7 8 9 10+00 11

5+00 4



DESERT FORT STREET



DESERT VISTA DRIVE

CURVE DATA

No.	RADIUS	DELTA	LENGTH	TANGENT
C1	20.00'	90°00'00"	31.42'	20.00'
C2	55.00'	152°00'20"	145.91'	220.64'
C3	50.00'	31°00'10"	27.05'	13.87'
C4	30.00'	90°00'00"	47.12'	30.00'

SIDEWALK RAMPS TRANSITION TABLE

GRADE IN %	W. RAMP	V. RAMP
+3 TO -2.00	4.5	2.5
+3 TO -1.00	4.5	3.0
+2 TO -2.00	4.5	3.5
+2 TO -1.00	4.5	4.0
+1 TO -2.00	4.5	4.5
+1 TO -1.00	4.5	5.0
0 TO -2.00	4.5	5.5
0 TO -1.00	4.5	6.0
-1 TO -2.00	4.5	6.5
-1 TO -1.00	4.5	7.0
-2 TO -2.00	4.5	7.5
-2 TO -1.00	4.5	8.0

BENCHMARK
 C.L.V.B.M. #0LV0021E4
 RIVET & PLATE IN TOP OF CURB, NW RETURN OF BUFFALO DRIVE & LAKE MEAD BLVD.
 ELEVATION = 2+25.487

QUANTITY ESTIMATE

2" ASPHALTIC CONCRETE 855 SY
 30" ROLL TYPE CURB & GUTTER 360 LF
 6" CONCRETE SIDEWALK 1,267 SF

THESE QUANTITIES ARE ONLY ESTIMATES, CONTRACTOR TO VERIFY.

Call before you Dig.
 1-800-227-2600
 UNDERGROUND SERVICE (USA)

STREET & SEWER PLAN & PROFILE
(DESERT FORT STREET & DESERT VISTA DRIVE)

PROJECT: **LA MIRADA UNIT 1**

W.O. #: 721 - B041
 BY: CFA / DTB
 DATE: JULY 1993
 SCALE: HORIZ. 1"=40'
 VERT. 1"=4'

SHEET **10**
 OF 13 SHEETS

11-9-65

1074-4301-1