

CONSTRUCTION NOTES

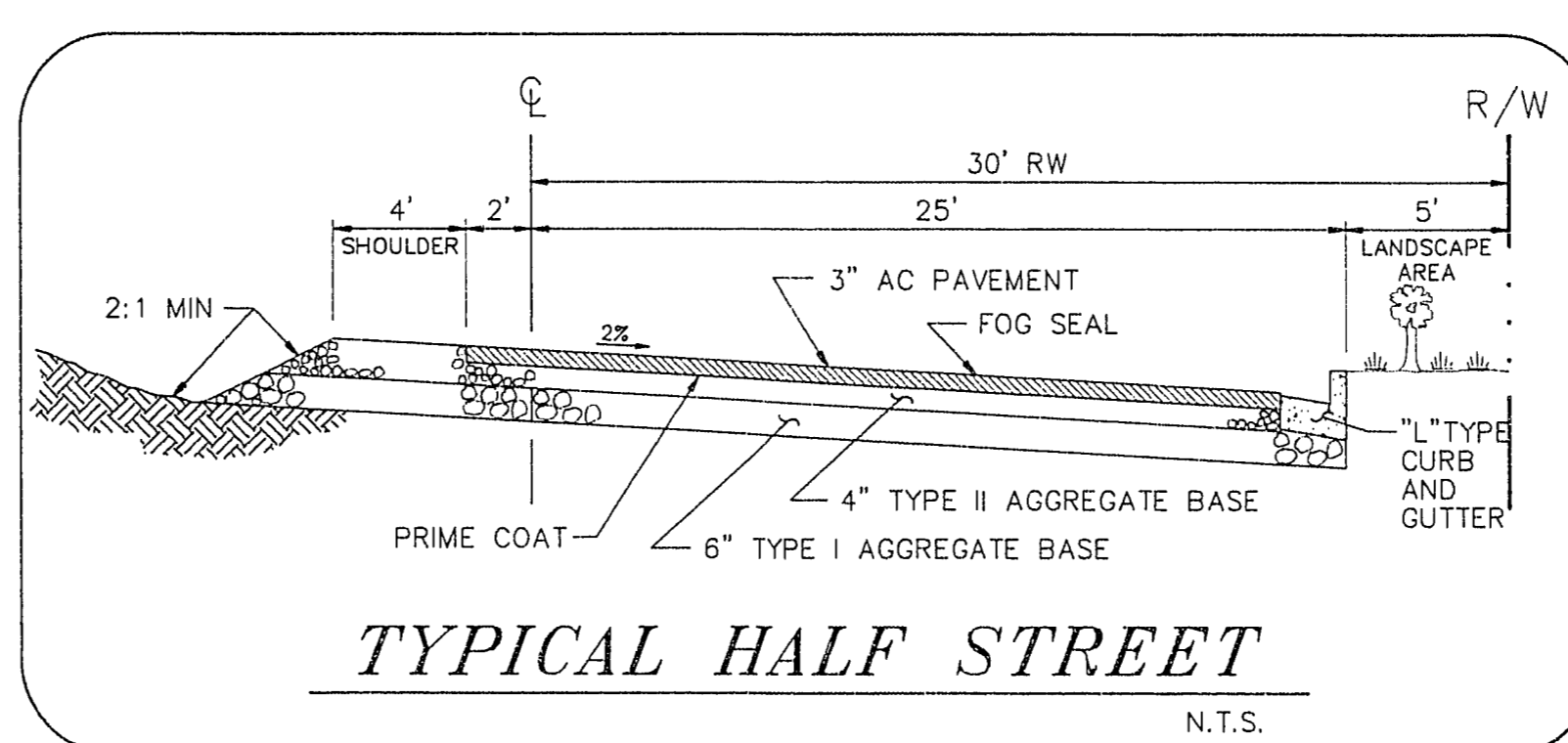
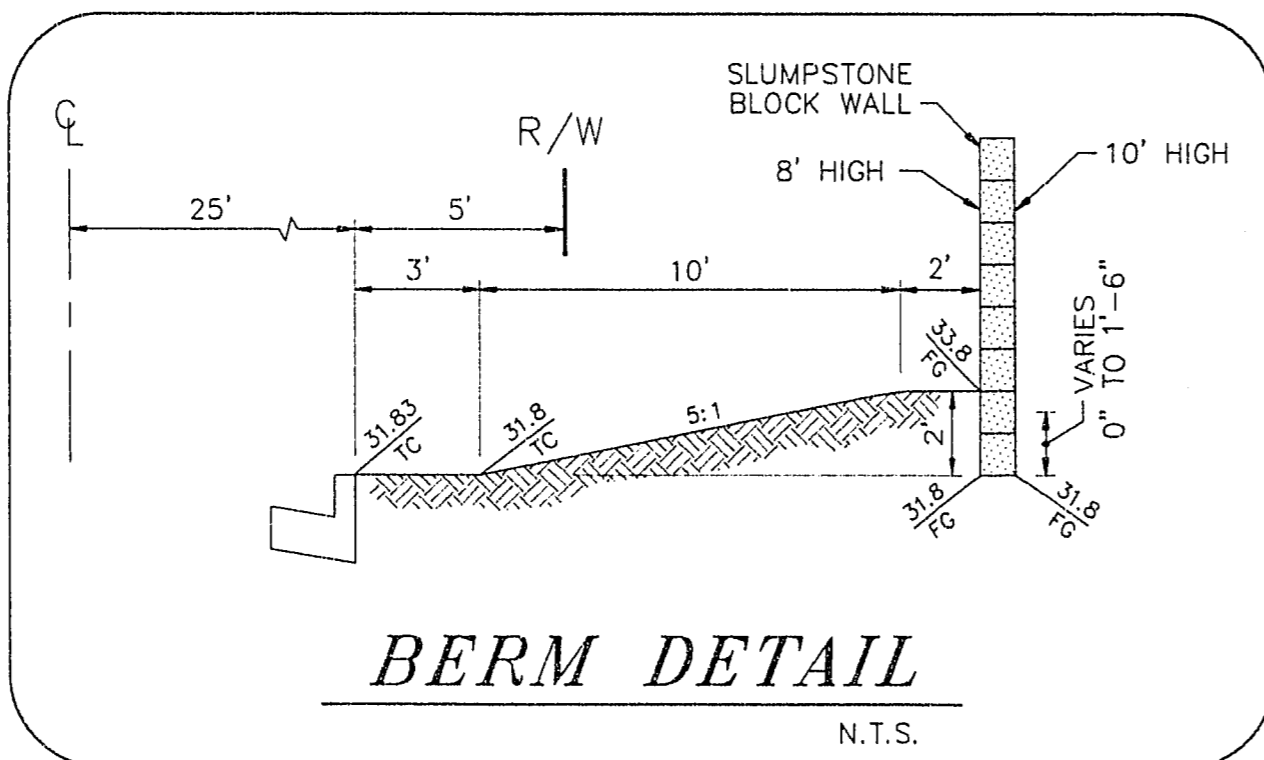
- 1 CONSTRUCT "L" TYPE CURB AND GUTTER PER UNIFORM STD. DWG. No. 216
- 2 CONSTRUCT 3" AC OVER 4" TYPE II BASE OVER 6" TYPE I BASE (PER TYPICAL HALF STREET DETAIL ON THIS SHEET)
- 3 CONSTRUCT TRANSITION ASPHALT CONCRETE PAVING SECTION (PER TYPICAL STREET DETAIL ON THIS SHEET)
- 4 SAWCUT AND REMOVE EXISTING ASPHALT CONCRETE PAVING
- 5 INSTALL W14-2 SIGN (NO OUTLET)
- 6 INSTALL TWO (2) 10 FOOT WIDE NDOT STANDARD TYPE III BARRICADES
- 7 VERTICALLY ADJUST CATV BOX TO GRADE
- 8 CONSTRUCT COMM. DWY (OPTION A) EMERGENCY ACCESS PER CLV STD DWG NO. 224
- 9 INSTALL R11-2 SIGN (ROAD CLOSED)
- 10 CONSTRUCT 6" CONCRETE OVER 12" TYPE II COMPACTED TO 95% WITH #4 BARS @ 16" O.E.W. WITH 3" CLEAR COVER
- 11 CONSTRUCT UTILITY TRENCH PER UNIFORM STD. DWG. No. 503
- 12 IN PAVEMENT TRANSITION (EXIST.) REPLACE EXIST. PAVEMENT SECTION WITH 2" AC ON 4" TYPE II ON 6" TYPE I WITH FOG SEAL AND PRIME COAT IN APPROPRIATE LOCATIONS
- 13 INSTALL 1 1/4" PVC CONDUIT FOR STREET LIGHTS
- 14 INSTALL 3 1/2" PULL BOX
- 15 CAP AND MARK CONDUIT

BASIS OF BEARING

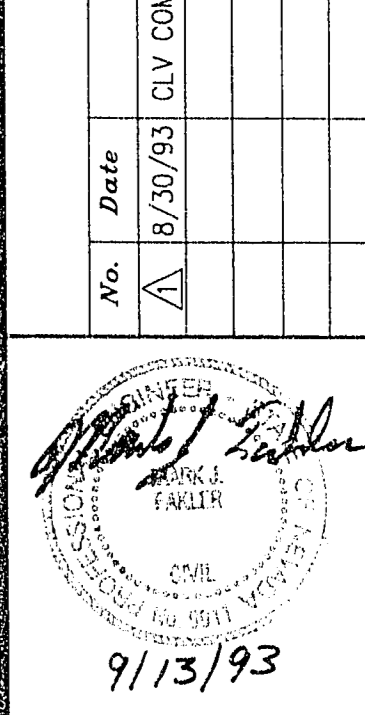
NORTH 88°29'02" WEST BEING THE SOUTH LINE OF THE SOUTHWEST QUARTER (SW 1/4) OF THE SOUTHWEST QUARTER (SW 1/4) OF SECTION 4, T21S, R60E, M.D.B. & M., CITY OF LAS VEGAS, CLARK COUNTY, NEVADA, AS SHOWN ON FILE 55, PAGE 32 OF PARCEL MAPS IN THE RECORDER'S OFFICE OF CLARK COUNTY, NEVADA.

BENCH MARK

CITY OF LAS VEGAS BENCH MARK No. 1L1V105SES, RIVET IN 2" x 2" PLATE IN TOP OF CURB AT NORTHWEST RETURN ON WEST SAHARA AVENUE AND ELEVATION: 2660.17



REVISIONS		CHRD	APPD
No.	Date	BY	DATE
1	8/30/93	CLV	

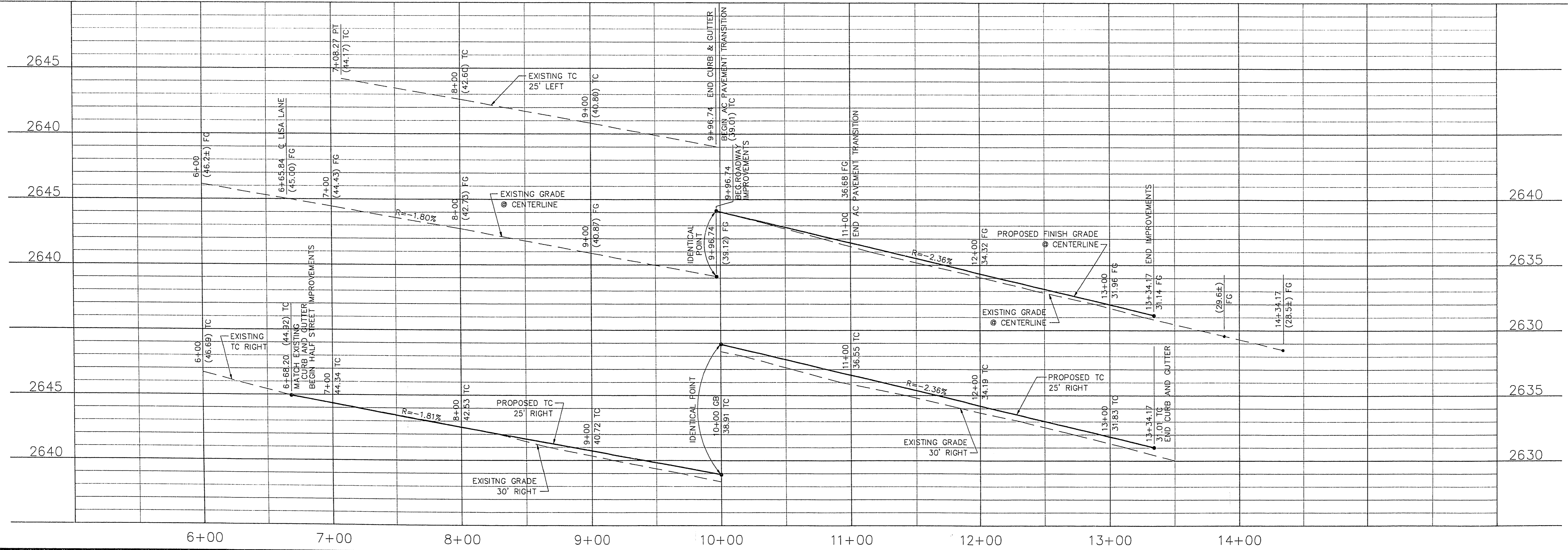


DESIGNED: ARS
 DRAWN: [blank]
 CHECKED: [blank]
 JOB NO: 415-2-92
 SCALE: [blank]
 HORIZ: [blank]
 VERT: [blank]

1055 EAST TROPICANA
 SUITE 800
 LAS VEGAS, NEVADA 89119
 (702) 78-1007

PROJECT: **LAKES PACIFIC TOWNHOMES**
 DESCRIPTION: **VIA OLIVERO AVENUE**
PLAN AND PROFILE

SHEET
C-6
 6 OF 9



1074-4282
 11-4-62