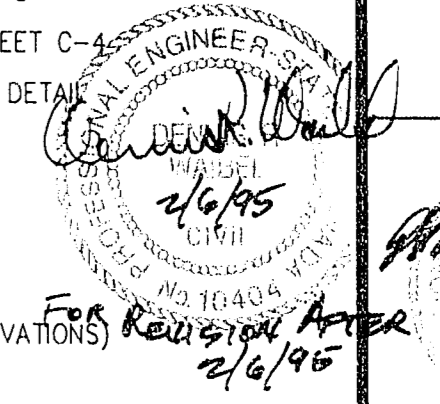


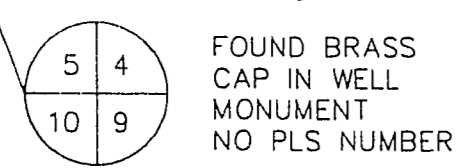
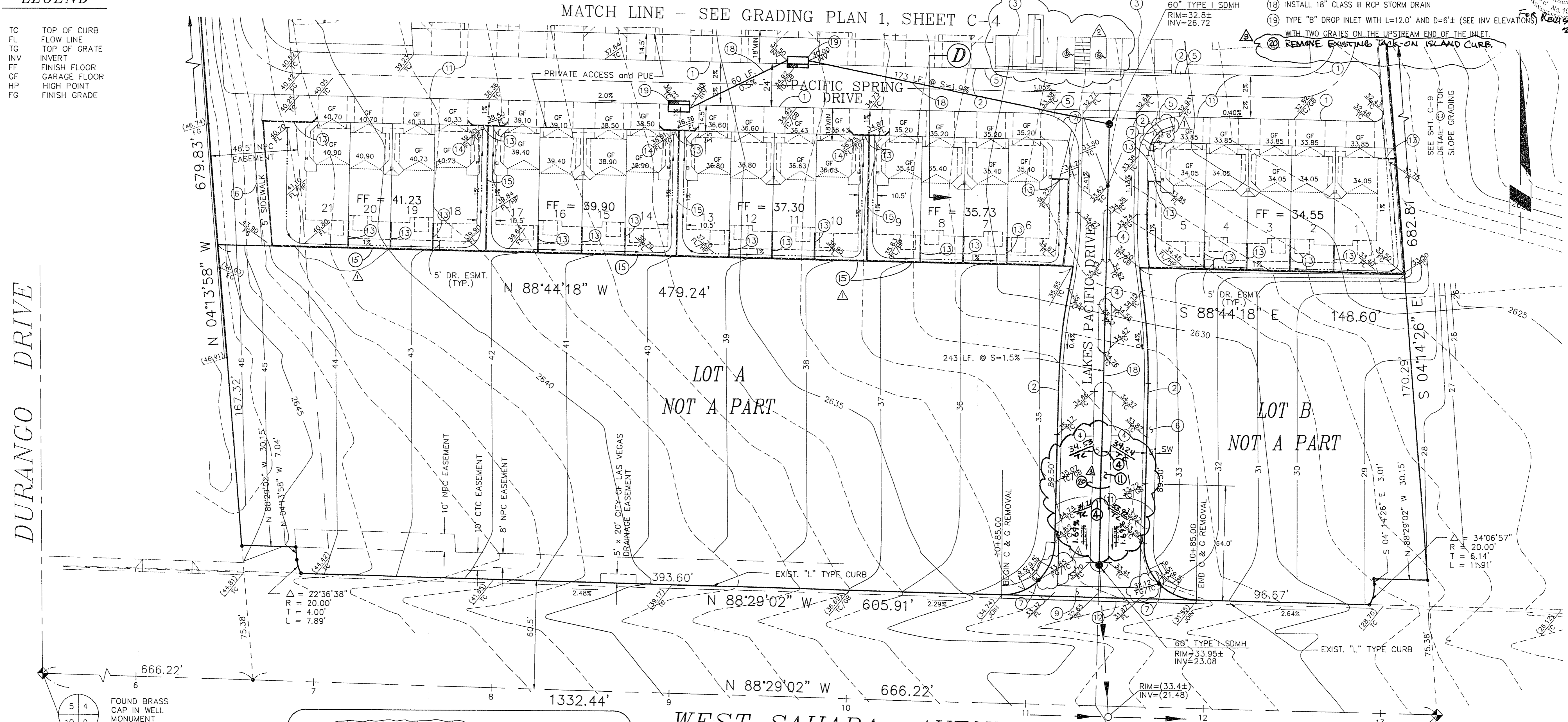
**CONSTRUCTION NOTES**

- CONSTRUCT 30" ROLL CURB PER UNIFORM STD. DWG. No. 217a
- CONSTRUCT "L" TYPE CURB AND GUTTER PER UNIFORM STD. DWG. No. 216
- CONSTRUCT "A" TYPE CURB PER UNIFORM STD. DWG. No. 219
- CONSTRUCT TACK-ON ISLAND CURB PER UNIFORM STD DWG NO. 220
- CONSTRUCT TRANSITION FROM "L" TYPE CURB AND GUTTER TO 30" ROLL CURB PER DETAIL A, SHEET C-5
- CONSTRUCT SIDEWALK PER UNIFORM STD. DWG. No. 234
- CONSTRUCT SIDEWALK RAMP CASE I PER UNIFORM STD. DWG. No. 235
- CONSTRUCT 4' VALLEY GUTTER PER DETAIL B, SHEET C-9
- CONSTRUCT CROSS GUTTER PER UNIFORM STD. DWG NO. 228
- CONSTRUCT DEPRESSED CURB
- CONSTRUCT 2" ASPHALT CONCRETE W/ FOG SEAL ON 4" TYPE II AGGREGATE BASE W/ PRIME COAT ON 6" TYPE I AGGREGATE BASE
- SANUCUT AND REMOVE EXISTING CURB AND GUTTER
- CONSTRUCT OPENING IN BLOCK WALL PER DETAIL B, SHEET C-5
- INSTALL AREA DRAIN W/ GRATED INLET, SEE DETAIL A ON SHEET C-4
- 5' MAX HEIGHT RETAINING WALL W/ SCREEN WALL (REFER TO DETAIL SHEET C-9 FOR RETAINING WALL SECTION)
- INSTALL WROUGHT IRON FENCE BETWEEN CMU WALLS
- CONSTRUCT 3' VALLEY GUTTER PER DETAIL "B" SHEET C-4
- INSTALL 18" CLASS III RCP STORM DRAIN
- TYPE "B" DROP INLET WITH L=12.0' AND D=6"± (SEE INV ELEVATIONS)
- WITH TWO GRATES ON THE UPSTREAM END OF THE INLET REMOVE EXISTING TACK-ON ISLAND CURB.

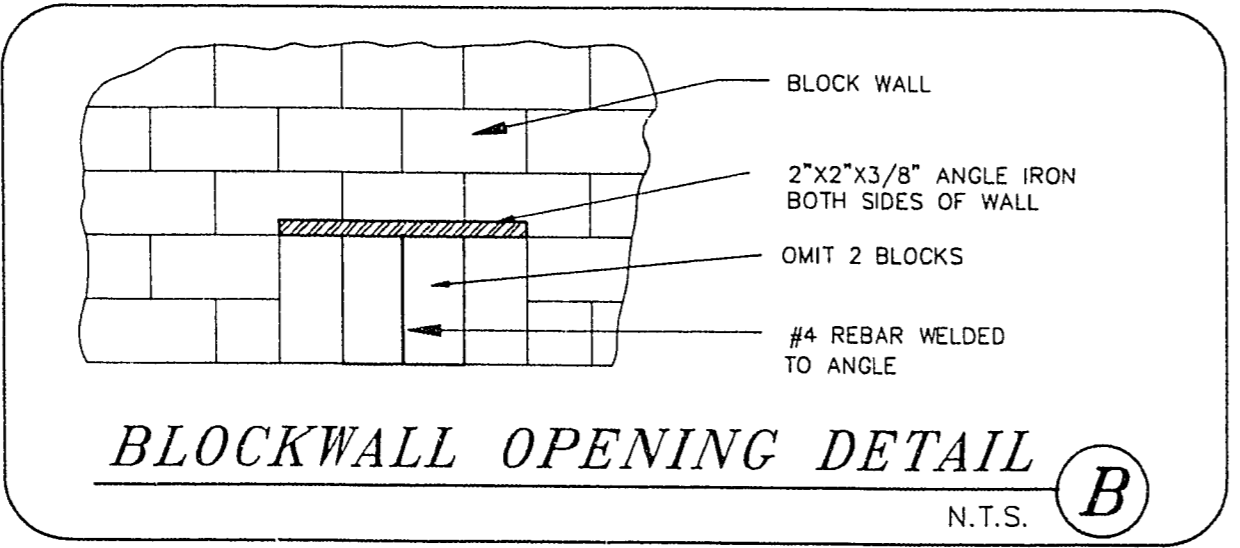


**LEGEND**

- TC TOP OF CURB
- FL FLOW LINE
- TG TOP OF GRATE
- INV INVERT
- FF FINISH FLOOR
- GF GARAGE FLOOR
- HP HIGH POINT
- FG FINISH GRADE



- NOTES:**
- GRADING SHALL BE IN ACCORDANCE WITH THE SOIL REPORT PREPARED BY WESTERN TECHNOLOGIES, Inc., No. 4128408 AND THE APPROVED DRAINAGE STUDY.
  - REFER TO POOL CONTRACTOR'S PLAN FOR POOL LAYOUT AND GRADING FOR ALL OTHER ON-SITE FACILITIES, SEE ARCHITECT'S PLAN.
  - FOR BLOCK WALL CONSTRUCTION AND DETAILS, SEE ARCHITECT'S PLAN.
  - ALL ON-SITE STORM DRAIN EASEMENTS ARE PRIVATE AND MAINTAINED BY THE HOME OWNER'S ASSOCIATION.



**WEST SAHARA AVENUE**  
(EXISTING IMPROVEMENTS IN SAHARA AVENUE PER W. SAHARA AVE. SID# 1427.)

**NOTE:**  
I CERTIFY THAT THIS GRADING PLAN IS IN CONFORMANCE WITH THE APPROVED DRAINAGE STUDY ON FILE AT THE CITY OF LAS VEGAS FOR THIS PROJECT.

*Mark L. Kahler* 9-13-93  
DATE

Call before you Dig.  
1-800-227-2600  
UNDERGROUND SERVICE LOCATOR

REVISIONS		CHD	APPD
No.	Date	BY	DATE
1	8/30/93	CLY COMMENTS	
2	9/13/93	DRIVER REVISED COMMON AREA	
3	9/13/93	REVISED MEDIAN OPENING	

DESIGNED:	ARS
DRAWN:	ARS
CHECKED:	ARS
JOB NO.:	4128-2-92
SCALE:	
HORIZ.:	1" = 80'
VERT.:	1" = 80'

PROJECT: **LAKES PACIFIC TOWNHOMES**

DESCRIPTION: **GRADING PLAN**

SHEET: **C-5**

5 OF 9

11-4-01 1074-4282