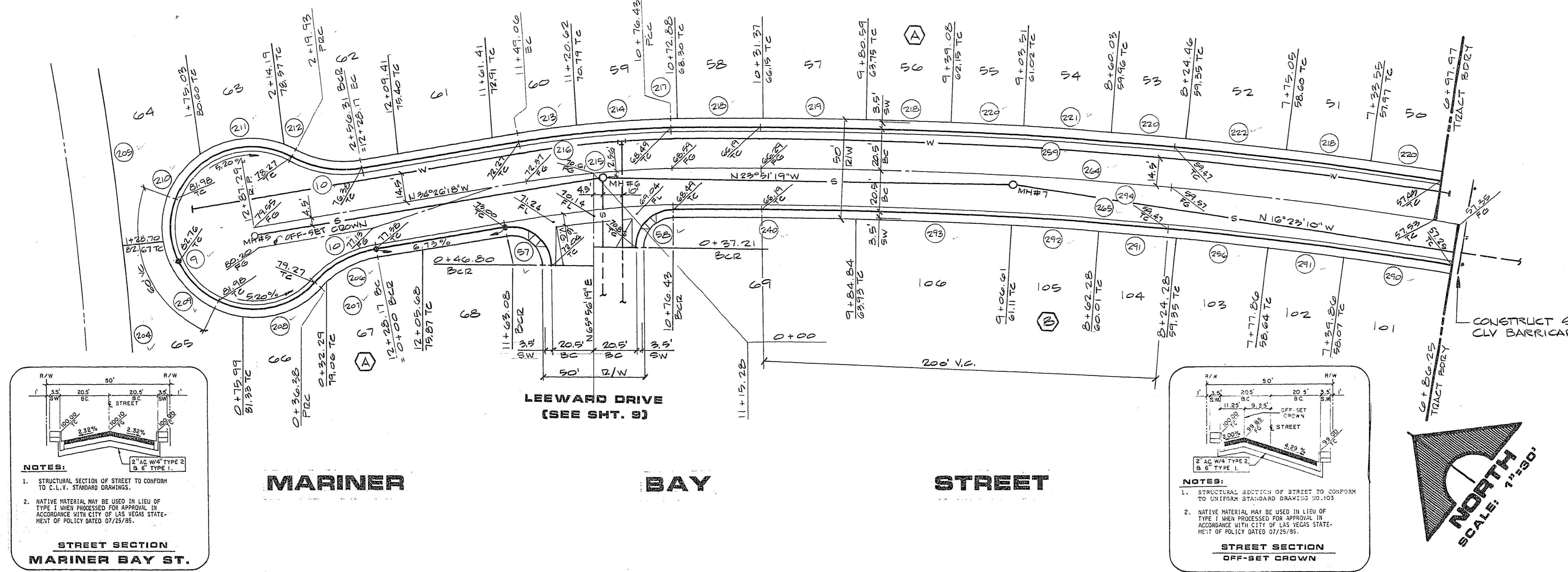


CUL-DE-SAC PROFILE



BCR CURVE DATA

NO.	Δ	R	L	T
9	25° 29' 44"	41.00'	183.54'	0
10	35° 14' 52"	54.50'	36.38'	18.90'
57	10° 22' 37"	19.50'	34.16'	23.40'
58	88° 11' 55"	19.50'	30.02'	18.90'
204	05° 16' 07"	1883.00'	143.57'	72.84'
205	05° 16' 13"	1883.00'	143.61'	72.86'
206	33° 56' 59"	54.50'	32.29'	16.64'
207	04° 17' 53"	54.50'	4.09'	2.05'
208	55° 21' 02"	41.00'	39.61'	21.50'
209	73° 39' 20"	41.00'	52.71'	30.70'
210	64° 44' 47"	41.00'	46.33'	23.99'
211	54° 43' 17"	41.00'	39.16'	21.22'
212	08° 01' 18"	41.00'	5.74'	2.87'
213	03° 21' 27"	505.79'	29.64'	14.82'
214	05° 13' 05"	505.79'	46.06'	23.05'
215	08° 34' 42"	485.29'	72.64'	36.39'
216	08° 34' 42"	505.79'	75.73'	37.94'
217	00° 05' 50"	2108.63'	3.55'	1.79'
218	01° 08' 20"	2108.63'	41.91'	20.96'
219	01° 23' 37"	2108.63'	51.29'	25.65'
220	00° 38' 34"	2108.63'	35.92'	17.96'
221	01° 11' 35"	2108.63'	43.91'	21.95'
222	01° 21' 21"	2108.63'	49.90'	24.95'
240	02° 30' 46"	2067.13'	90.66'	43.24'
256	01° 16' 26"	2067.63'	45.97'	22.99'
259	10° 23' 04"	2108.63'	382.17'	191.61'
264	10° 42' 23"	2088.13'	390.19'	195.64'
265	10° 42' 22"	2087.63'	386.35'	193.74'
290	01° 28' 16"	2067.63'	53.09'	26.55'
291	01° 02' 35"	2067.63'	37.62'	18.81'
292	01° 12' 59"	2067.63'	43.90'	21.95'
293	02° 08' 48"	2067.63'	77.47'	38.74'
294	10° 42' 23"	2088.13'	390.19'	195.61'

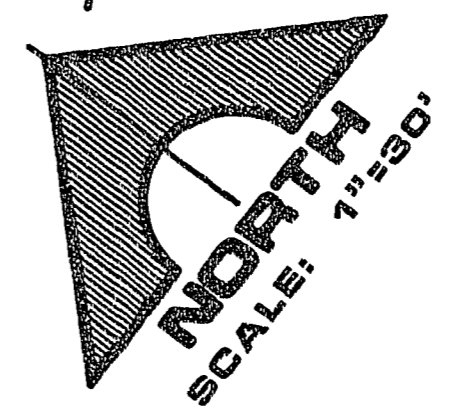
JOB NO. 5543.8520

NOTES:
1. STRUCTURAL SECTION OF STREET TO CONFORM TO C.I.V. STANDARD DRAWING.
2. NATIVE MATERIAL MAY BE USED IN LIEU OF TYPE I WHEN PROCESSED FOR APPROVAL IN ACCORDANCE WITH CITY OF LAS VEGAS STATEMENT OF POLICY DATED 07/25/85.

STREET SECTION MARINER BAY ST.

NOTES:
1. STRUCTURAL SECTION OF STREET TO CONFORM TO UNIFORM STANDARD DRAWING 30-103.
2. NATIVE MATERIAL MAY BE USED IN LIEU OF TYPE I WHEN PROCESSED FOR APPROVAL IN ACCORDANCE WITH CITY OF LAS VEGAS STATEMENT OF POLICY DATED 07/25/85.

STREET SECTION OFF-SET CROWN



APPROVAL
[Signature] 117-86
CLV CHIEF LAND DEVELOPMENT AND FLOOD CONTROL

DESCRIPTION

REV. DATE

3794 12/4/85
R.E. NO. JOYCE

REGISTERED PROFESSIONAL ENGINEER
STATE OF NEVADA
NO. 10000

G.C. WALLACE
Consulting Engineers, Inc.
1555 South Rainbow Blvd. • Las Vegas, Nevada 89102 • 953-1200

LEWIS HOMES OF NEVADA
LEWIS HOMES - LAKESIDE NO. 1
MARINER BAY STREET

SHEET 8 OF 11 SHEETS

27.17.1985 107Y-2033-1