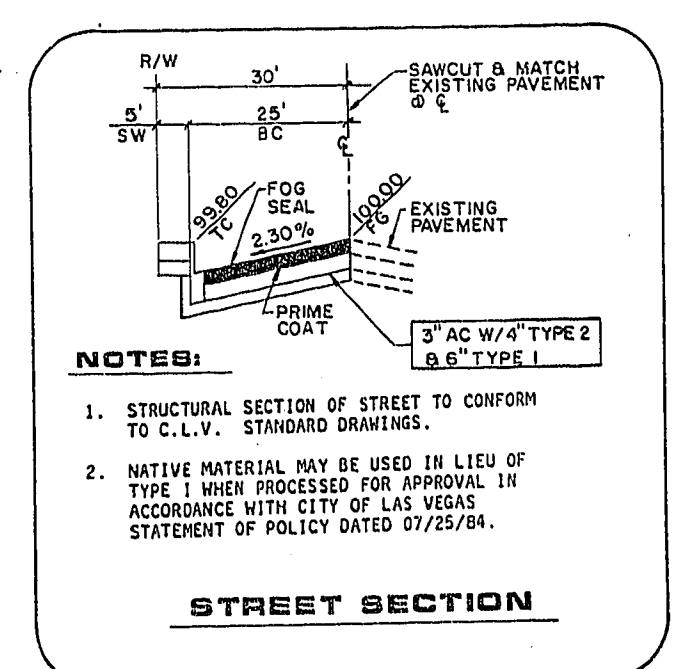
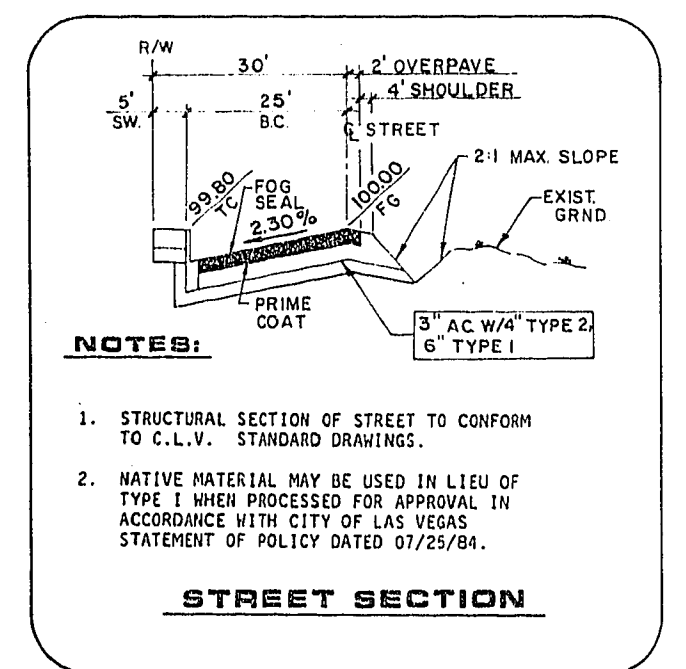
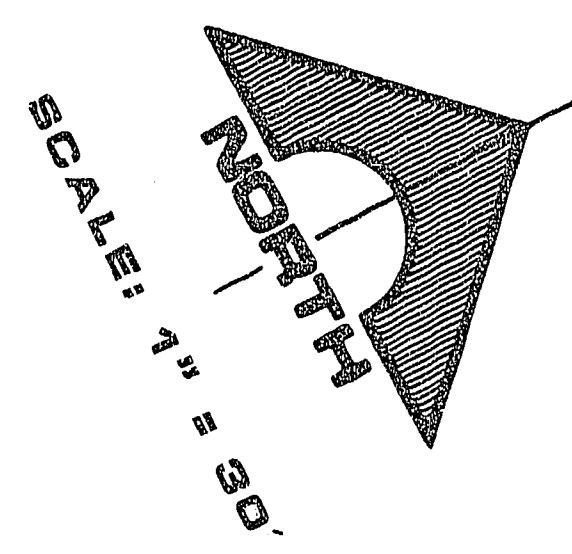
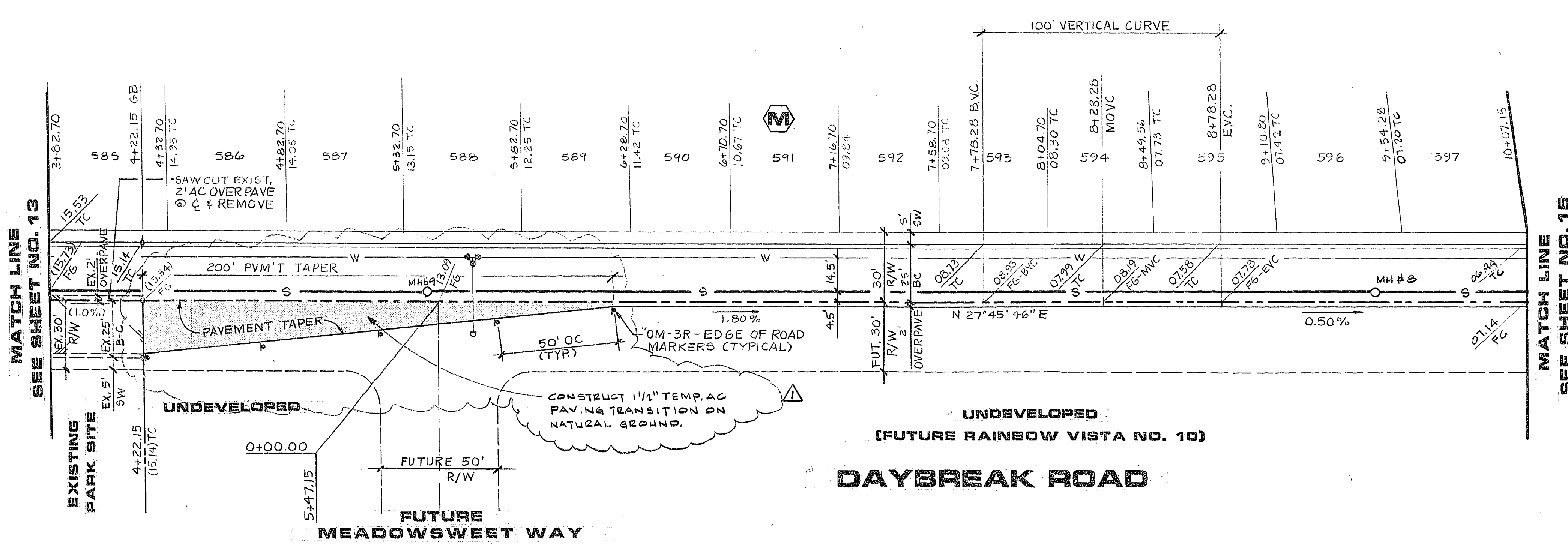
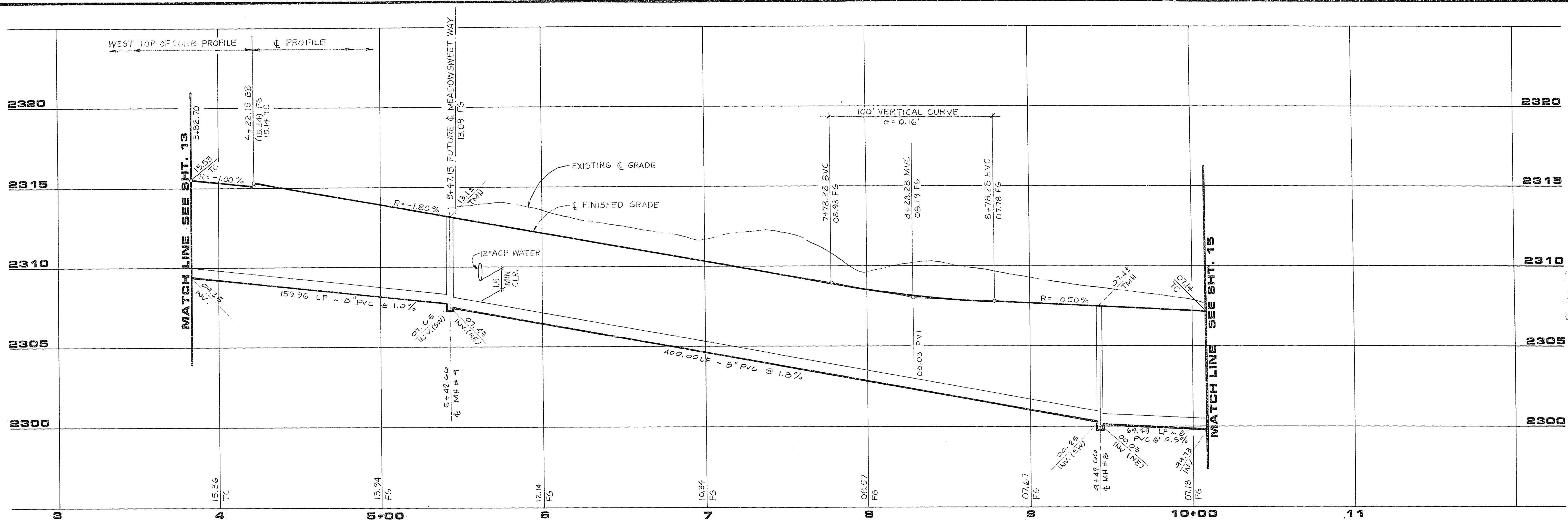


JOB NO. 427.690

984 DIETERICH-POST 60320



RECOMMENDED	DATE	DESCRIPTION
DAVID P. HUCKLE	3-7-09	ADDED TEMP. A.C. PAVING TRANS. AT DAYBREAK ROAD
REV	DATE	DESCRIPTION
1	3-7-09	ADDED TEMP. A.C. PAVING TRANS. AT DAYBREAK ROAD
2	3-7-09	ADDED TEMP. A.C. PAVING TRANS. AT DAYBREAK ROAD

1555 SOUTH RAINBOW BLVD., LAS VEGAS, NEVADA 89102

**G.C. WALLACE, INC.**  
Engineering/Architecture

LEWIS HOMES OF NEVADA  
LEWIS HOMES - RAINBOW VISTA NO. 9  
DAYBREAK ROAD

SHEET  
**14**  
OF 25 SHEETS

06.7.113 107Y-2032-9