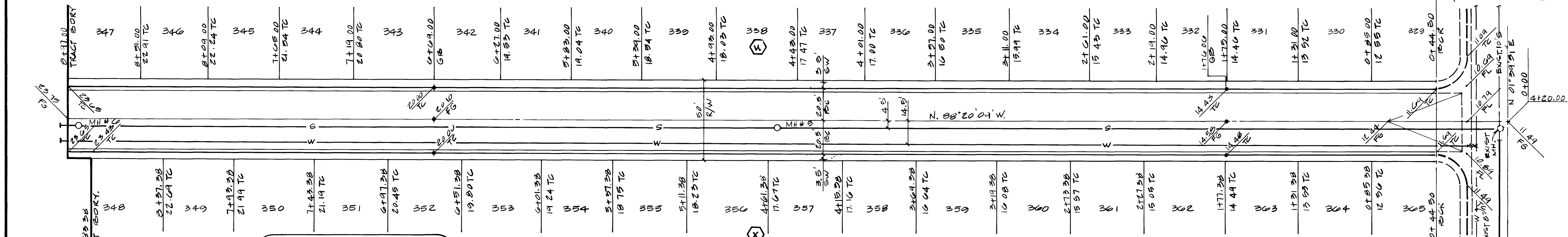
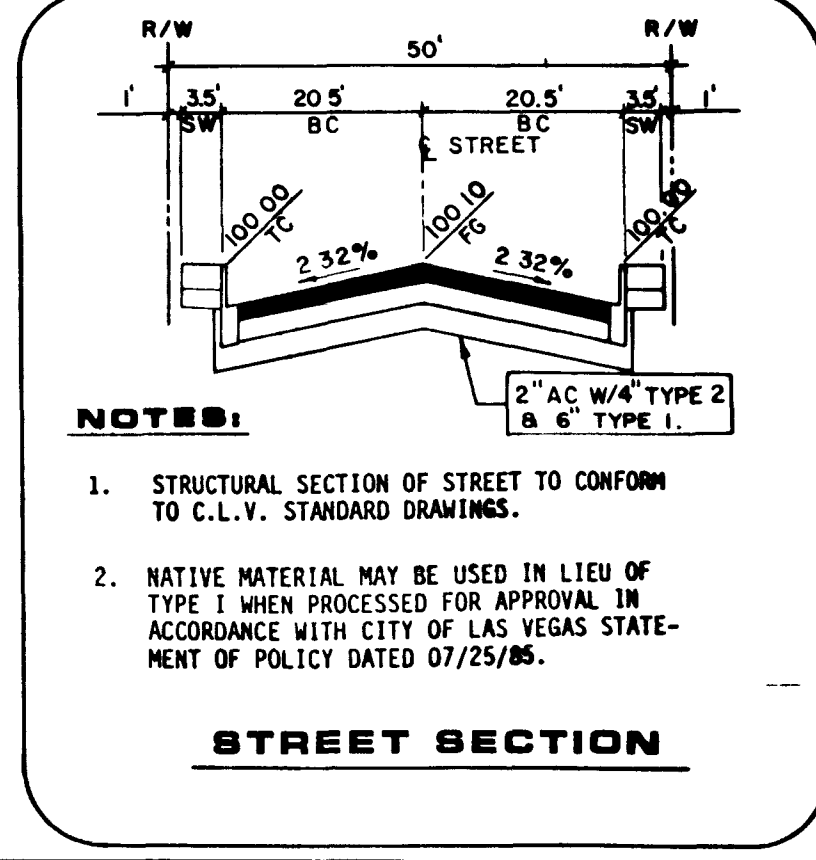


PROFILE
 HORIZ. 1" = 30'
 SCALE: VERT. 1" = 3'



COPPERFIELD AVENUE



- NOTES:**
- STRUCTURAL SECTION OF STREET TO CONFORM TO C.L.V. STANDARD DRAWINGS.
 - NATIVE MATERIAL MAY BE USED IN LIEU OF TYPE 1 WHEN PROCESSED FOR APPROVAL IN ACCORDANCE WITH CITY OF LAS VEGAS STATEMENT OF POLICY DATED 07/25/85.

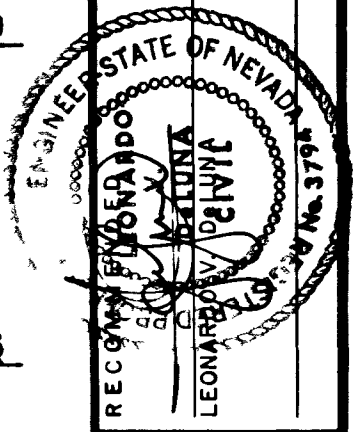
STREET SECTION

APPROVAL

[Signature]
 CLV CHIEF LAND DEVELOPMENT
 DATE 10-24-86

SHEET
11
 OF 14 SHEETS

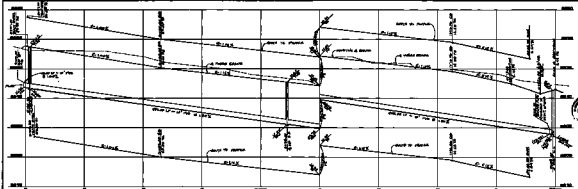
REV	DATE	DESCRIPTION
1	10/24/86	3784 R.E. NO. 70/81E




RECORDED IN BOOK 3784 R.E. NO. 70/81E
 G.C. WALLACE, INC.
 Engineering/Architecture
 1555 SOUTH RAINBOW BLVD., LAS VEGAS, NEVADA 89102

LEWIS HOMES OF NEVADA
 LEWIS HOMES - RAINBOW VISTA NO. 5
 COPPERFIELD AVENUE

SEE PLAN SHEET 10



APPROVAL

 ENGINEER

DATE: 10/10/10
 PROJECT: COPPERFIELD AVENUE
 SHEET: 11
 SCALE: AS SHOWN
 DRAWN BY: [Name]
 CHECKED BY: [Name]
 ENGINEER: [Name]
 FIRM: J.C. WALLACE, INC.
 10770-2284-0