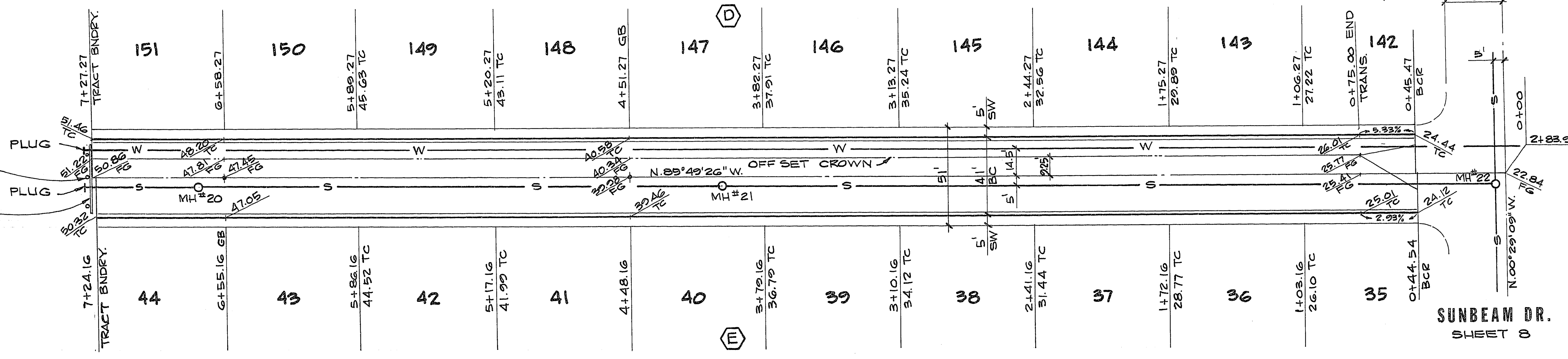


**PROFILE**  
SCALE: HORIZ. 1"=30'  
VERT. 1"=3'

**NOTE:**  
IMPROVEMENTS TO BE PROTECTED FROM EROSION.  
CONSTRUCT C.L.V. STD. BARRICADE



**CASCO WAY**

**APPROVALS:**

<i>R. L. Anton</i>	2-13-78	DATE	CLV. SANITATION SUPT.
<i>A. Barber</i>	2-9-78	DATE	CLV. FIRE MARSHALL
<i>[Signature]</i>	2-14-78	DATE	CLV. TRAFFIC ENGINEER
<i>[Signature]</i>	2-14-78	DATE	CLV. QUALITY CONTROL ENGR.
<i>[Signature]</i>	2-14-78	DATE	CLV. ELECTRICAL COORDINATOR
<i>[Signature]</i>	2-14-78	DATE	CLV. FIELD OPERATIONS ENGR.

RECOMMENDED BY <i>[Signature]</i> G. C. WALLACE	DATE 2/15/78
BY G. C. WALLACE	DATE 2/15/78
<b>G. C. WALLACE</b> Consulting Engineers, Inc. 1100 East Sahara Ave. - Las Vegas, Nevada 89104 • 732-3300	
LEWIS HOMES OF NEVADA	SHEET
LEWIS HOMES MEADOW VISTA UNIT NO. 3	<b>7</b>
CASCO WAY	OF 8 SHEETS

5543 5150