

**LEGEND & NOTES**

- 17 LOT NUMBER
- 176 CLOCK NUMBER
- R FLOW LINE
- 175 FINISH GRADE
- (NE) PAD ELEVATION
- CONTOUR LINE
- BCR BEGIN CURB RETURN (all BCR sta = 12 sta unless shown otherwise)
- 6" CONC BLOCK WALL
- - - 6" CHAIN LINK FENCE
- FRONT YARD SETBACK = .5'
- SIDE YARD SETBACK = 5' MIN
- ALL ELEV. ARE TOP OF CURB UNLESS SHOWN OTHERWISE
- USE UNIFORM STANDARD DRAWING PRACTICES UNLESS SHOWN OTHERWISE

**PRIVATE ENGINEERS NOTICE TO CONTRACTOR**

THE EXISTENCE AND LOCATION OF ANY UNDERGROUND UTILITY PIPES AND/OR FOREIGN STRUCTURES SHOWN ON THESE PLANS WERE OBTAINED BY A SEARCH OF THE AVAILABLE RECORDS. TO THE BEST OF OUR KNOWLEDGE, THERE ARE NO EXISTING UTILITIES AND/OR FOREIGN STRUCTURES EXISTING EXCEPT AS SHOWN ON THESE DRAWINGS. THE CONTRACTOR IS REQUIRED TO TAKE ALL NECESSARY PRECAUTIONARY MEASURES TO PROTECT THE UTILITY LINES AND/OR STRUCTURES SHOWN AND ANY OTHER MATTER OR MATERIALS FOREIGN TO THE NATURAL EARTH NOT OF RECORD AND/OR NOT SHOWN ON THESE DRAWINGS.

**GENERAL NOTES**

1. THE QUANTITY ESTIMATES SHOWN HEREON ARE APPROXIMATE AND NO ONE IS TO RELY UPON THEM FOR PAY QUANTITIES. EACH AND EVERY CONTRACTOR SHALL HAVE A SET OF APPROVED PLANS AND SPECIFICATIONS ON THE JOB SITE AT ALL TIMES AND SHALL RELY UPON THEM TO A HIGHER DEGREE THAN THE CONSTRUCTION STAKES IN PROSECUTING THE WORK.
2. ALL GRADES ARE REFERENCED TO THE TOP OF THE CONSTRUCTION GRADE STAKES OR NAILS AND THIS RULE SHALL BE OBSERVED. THREE CONSECUTIVE CONSTRUCTION GRADE STAKES OR NAILS CORRESPONDING TO THREE CONSECUTIVE POINTS SHOWN ON THE APPROVED PLANS AS A STRAIGHT GRADE SHALL BE USED IN COMMON AND ANY VARIATION SHALL BE REPORTED IN WRITING TO ALCA ENGINEERING & SURVEYING, INC. BEFORE WORK PROCEEDS. CONTRACTORS DOING OTHERWISE SHALL PROCEED AT THEIR TOTAL RISK AND RESPONSIBILITY.

**DUPLEXES - UNIT NO. 3**

3. EXCAVATION EQUALS: 4,657 CY.  
EMBANKMENT EQUALS: 263 CY.  
SHRINKAGE EQUALS: 0.20%  
SUBSIDENCE EQUALS: 0.2'

**BENCHMARK**

CLV B. GAP MON. FLUSH W/ AC @ THE INTERSECTION OF JONES BLVD. & SMOKE RANCH RD.  
ELEV. = 2259.31'

**F.H.A. NOTES:**

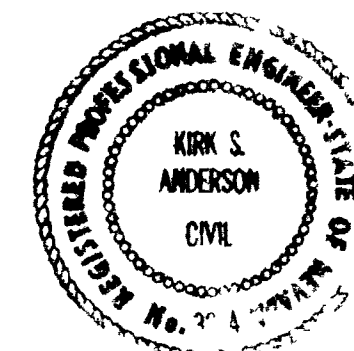
1. THIS EXHIBIT COMPLIES WITH F.H.A. MINIMUM PROPERTY STANDARDS AND NEIGHBORHOOD REQUIREMENTS DATA SHEET 796, AS WELL AS THE LOCAL CITY OR COUNTY REQUIREMENTS.

*Kirk S. Anderson*  
KIRK S. ANDERSON  
P.E. #3214

10-21-76  
DATE

2. ALL LOTS ARE "A" TYPE DRAINAGE TO THE STREETS. UNIT NO. 1 QTY (ONLY).
3. EXCAVATION EQUALS: 4,166  
EMBANKMENT EQUALS: 4,484  
SHRINKAGE EQUALS: 0.20%  
SUBSIDENCE EQUALS: 0.2'

NOTE: EXCAVATION & EMBANKMENT ARE COMPUTED FROM CROSS SECTIONS PRIOR TO ANY SHRINKAGE, SUBSIDENCE OR OTHER FACTORS BEING APPLIED.



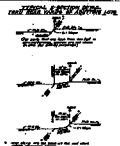
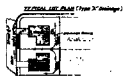
**APPROVALS**

*William Thomas* 3/2/77  
CITY ENGINEER DATE

*Robert Webb* 3-10-77  
FIELD OPERATIONS ENGR DATE

*Janet* 3-17-77  
QUALITY CONTROL SUPERVISOR DATE

REVISION NO.	DESCRIPTION	BY	DATE	APPROVAL
1	SEE SH 2	JP	8/22/77	112A 3-2-77
<b>REVISIONS</b>				
LEWIS HOMES-SMOKE RANCH EST. NO. 1 LAS VEGAS, NEVADA 893 NO. 3				
<b>ROUGH GRADING PLAN</b> sections, details, benchmark and notes				
ALCA ENGINEERING INC. CIVIL ENGINEERING - SURVEYING 2765 SOUTH HIGHLAND DRIVE SUITE #103 LAS VEGAS, NEVADA 89109 PH. 732-2108				
SCALE (H) 1/8" = 1'-0"	SCALE (V) 1/8" = 1'-0"	DATE	JOB NO.	
DES.			7609-1-3	
DR.				SHEET 1 OF 2



**LEGEND & NOTES**

- 1. LATE MODEL
- 2. EARLY MODEL
- 3. PARTS LIST
- 4. DRAWING
- 5. SPECIFICATION
- 6. TEST PROCEDURE
- 7. INSPECTION PROCEDURE
- 8. QUALITY CONTROL PROCEDURE
- 9. MAINTENANCE PROCEDURE
- 10. REPAIR PROCEDURE
- 11. ASSEMBLY PROCEDURE
- 12. DISASSEMBLY PROCEDURE
- 13. STORAGE PROCEDURE
- 14. TRANSPORT PROCEDURE
- 15. UNLOADING PROCEDURE
- 16. LOADING PROCEDURE
- 17. PACKAGING PROCEDURE
- 18. UNPACKAGING PROCEDURE
- 19. INSPECTION PROCEDURE
- 20. TESTING PROCEDURE
- 21. CALIBRATION PROCEDURE
- 22. ADJUSTMENT PROCEDURE
- 23. REPAIR PROCEDURE
- 24. OVERHAUL PROCEDURE
- 25. REBUILD PROCEDURE
- 26. REFINISH PROCEDURE
- 27. REWORK PROCEDURE
- 28. REUSE PROCEDURE
- 29. RECYCLE PROCEDURE
- 30. DISPOSAL PROCEDURE

**NOTES**

1. THIS DRAWING IS THE PROPERTY OF THE COMPANY AND IS NOT TO BE REPRODUCED OR TRANSMITTED IN ANY FORM OR BY ANY MEANS, ELECTRONIC OR MECHANICAL, INCLUDING PHOTOCOPYING, RECORDING, OR BY ANY INFORMATION STORAGE AND RETRIEVAL SYSTEM, WITHOUT THE WRITTEN PERMISSION OF THE COMPANY.

2. THE COMPANY ASSUMES NO LIABILITY FOR DAMAGES OF ANY KIND, INCLUDING CONSEQUENTIAL DAMAGES, ARISING FROM THE USE OF THIS DRAWING.

3. THE COMPANY ASSUMES NO LIABILITY FOR DAMAGES OF ANY KIND, INCLUDING CONSEQUENTIAL DAMAGES, ARISING FROM THE USE OF THIS DRAWING.

**REVISIONS - UNIT 1010**

NO.	DESCRIPTION	DATE
1	REVISION	10/10/10
2	REVISION	10/10/10
3	REVISION	10/10/10

**REVISIONS**

1. THIS DRAWING IS THE PROPERTY OF THE COMPANY AND IS NOT TO BE REPRODUCED OR TRANSMITTED IN ANY FORM OR BY ANY MEANS, ELECTRONIC OR MECHANICAL, INCLUDING PHOTOCOPYING, RECORDING, OR BY ANY INFORMATION STORAGE AND RETRIEVAL SYSTEM, WITHOUT THE WRITTEN PERMISSION OF THE COMPANY.

**NOTES**

- 1. THIS DRAWING IS THE PROPERTY OF THE COMPANY AND IS NOT TO BE REPRODUCED OR TRANSMITTED IN ANY FORM OR BY ANY MEANS, ELECTRONIC OR MECHANICAL, INCLUDING PHOTOCOPYING, RECORDING, OR BY ANY INFORMATION STORAGE AND RETRIEVAL SYSTEM, WITHOUT THE WRITTEN PERMISSION OF THE COMPANY.
- 2. THE COMPANY ASSUMES NO LIABILITY FOR DAMAGES OF ANY KIND, INCLUDING CONSEQUENTIAL DAMAGES, ARISING FROM THE USE OF THIS DRAWING.
- 3. THE COMPANY ASSUMES NO LIABILITY FOR DAMAGES OF ANY KIND, INCLUDING CONSEQUENTIAL DAMAGES, ARISING FROM THE USE OF THIS DRAWING.



Approved: \_\_\_\_\_  
 \_\_\_\_\_  
 \_\_\_\_\_

NO.	DESCRIPTION	DATE
1	REVISION	10/10/10
2	REVISION	10/10/10
3	REVISION	10/10/10