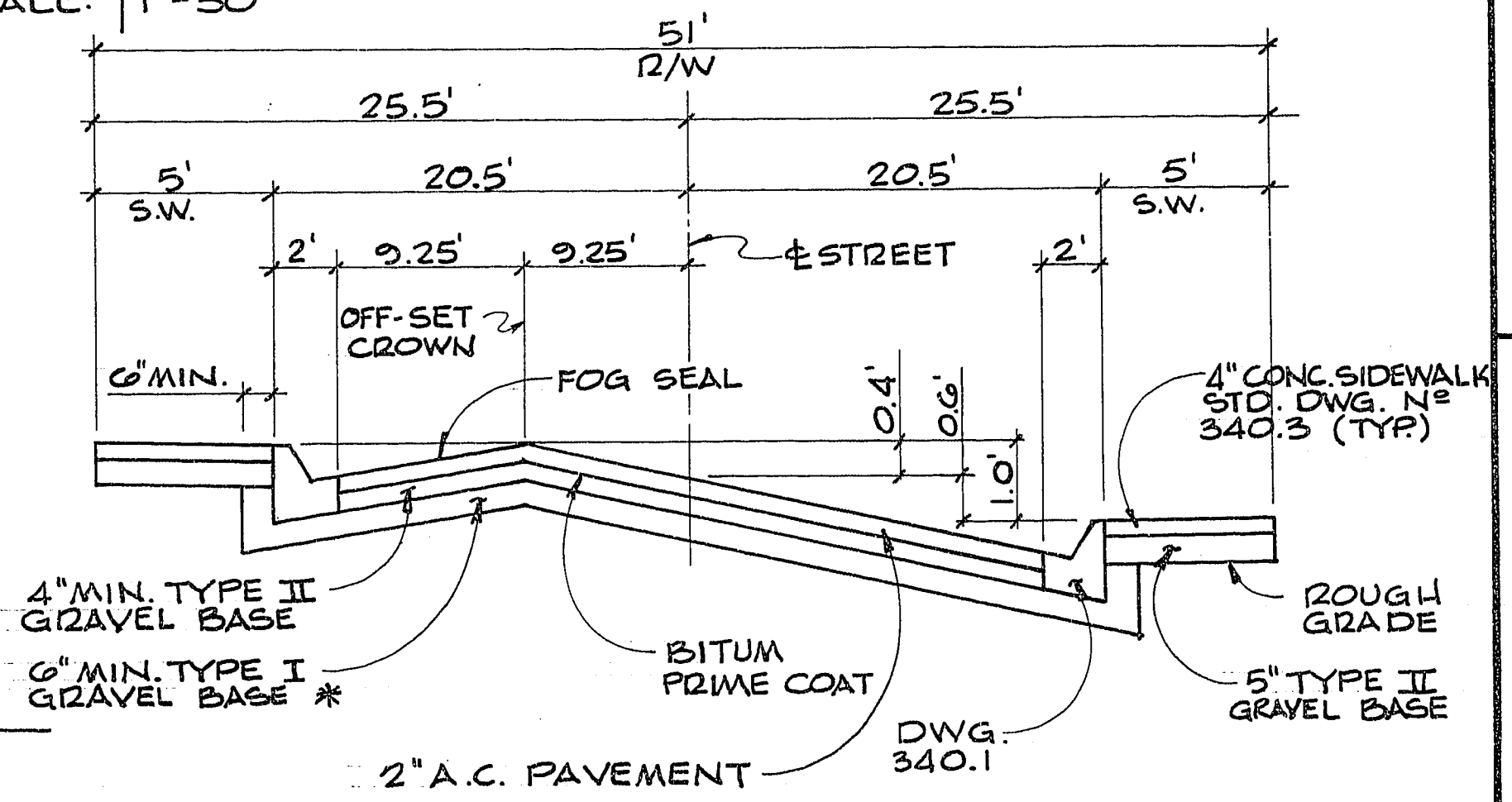


PROFILE
SCALE: HORIZ. 1"=30'
VERT. 1"=3'

NUCKLE PROFILE

* OWNER AGREES THAT IF EXISTING NATIVE MATERIAL DOES NOT CONFORM TO SPECIFICATIONS FOR TYPE I BASE, OWNER WILL IMPORT TYPE I BASE FOR A.C. PAVEMENT.

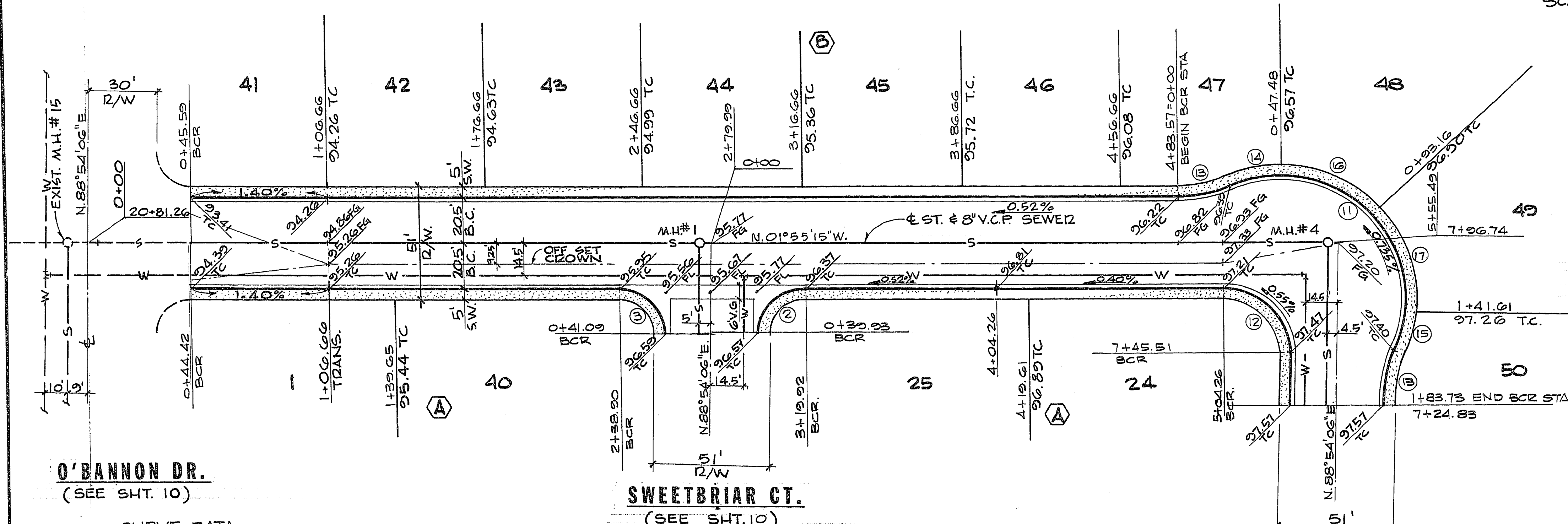
SCALE: 1"=30'



2" A.C. PAVEMENT
COMPACT ALL AREAS TO 95%
51' OFFSET CROWN

APPROVALS:

<i>[Signature]</i>	C.L.V. ENGINEER	2/23/79
<i>[Signature]</i>	C.L.V. FIELD OPERATIONS ENGINEER	2-22-79
<i>[Signature]</i>	C.L.V. TRAFFIC ENGINEER	2-7-79
<i>[Signature]</i>	C.L.V. SANITATION SUP'T.	2-5-79
<i>[Signature]</i>	C.L.V. QUALITY CONTROL ENGINEER	2-21-79



CURVE DATA

NO	Δ	BCR	L	T
2	89°10'30"	20.00	11.13	10.71
3	90°40'21"	20.00	11.70	20.29
11	159°50'13"	56.00	136.67	152.16
12	90°40'21"	30.00	47.55	30.43
13	24°30'26"	56.00	23.95	11.94
14	24°30'26"	56.00	23.95	12.16
15	12°01'28"	56.00	18.59	9.28
16	46°44'18"	56.00	45.68	24.20
17	42°34'01"	56.00	48.43	23.86

LEWIS HOMES - SAHARA NO. 6 ONLY

PICCOLO WAY

PEPPERMILL DR.
(SEE SHT. 9)

RECOMMENDED BY E. C. WALLACE	DATE 2/23/79	DESCRIPTION
E. C. WALLACE Consulting Engineers, Inc. 1100 East Sahara Ave. • Las Vegas, Nevada 89104 • 732-3330		
LEWIS HOMES OF NEVADA	LEWIS HOMES - SAHARA NO. 6 & NO. 7	PICCOLO WAY
SHEET		8
OF 12 SHEETS		

55-43.1060

JUN 2 8 1985

23-7-90 1078-2027-95