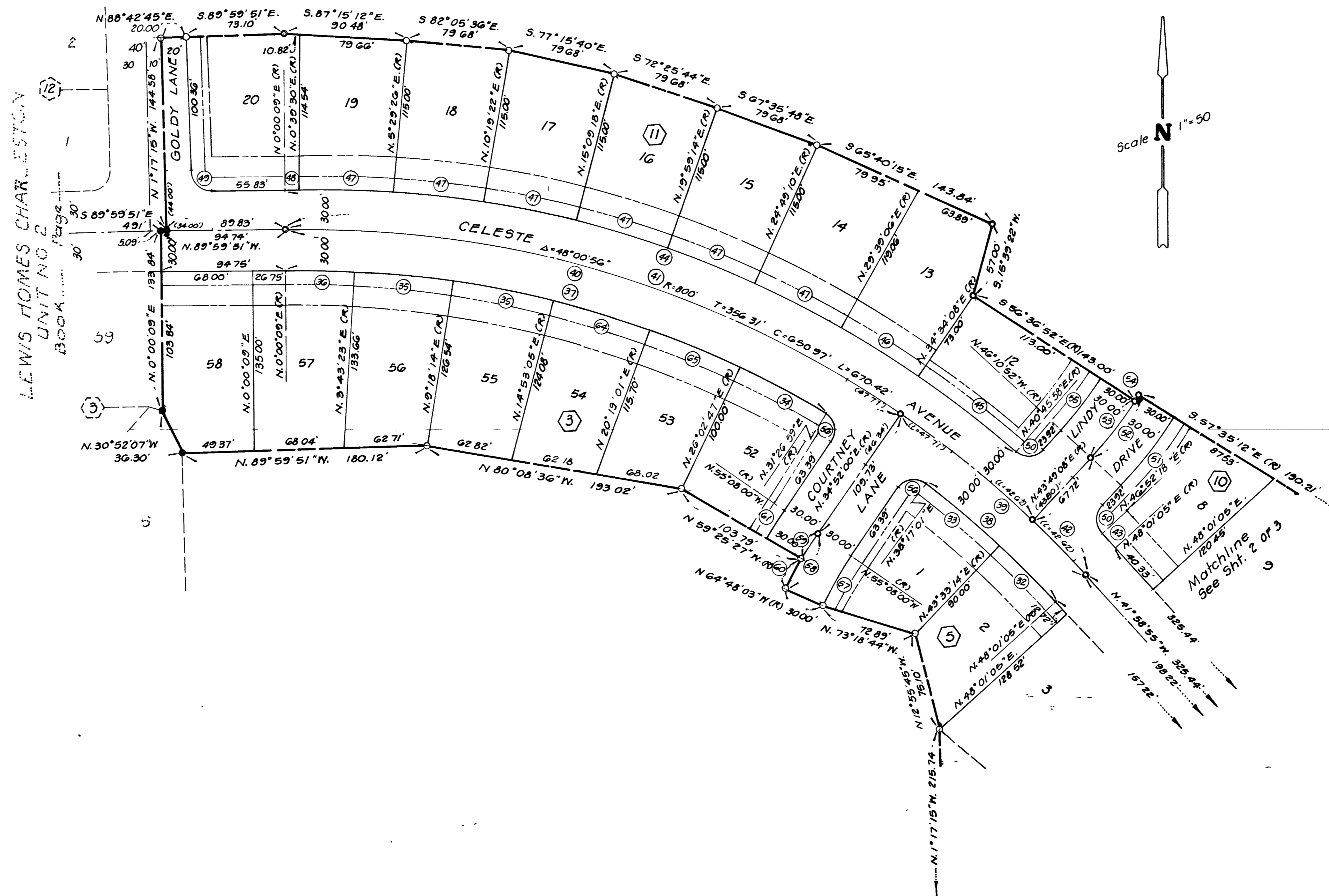


# LEWIS HOMES - CHARLESTON UNIT NO. 5

BEING A SUBDIVISION WITHIN A PORTION OF  
THE N.W. 1/4 OF SEC. 35, T.20S., R.60E., M.D.M.  
CITY OF LAS VEGAS, CLARK COUNTY, NEVADA



BOOK \_\_\_\_\_

NO. \_\_\_\_\_

# LEWIS HOMES - CHARLESTON UNIT NO. 5

BEING A SUBDIVISION WITHIN A PORTION OF  
THE N.W. 1/4 OF SEC. 35, T.20S., R.80E., M.D.M.  
CITY OF LAS VEGAS, CLARK COUNTY, NEVADA

