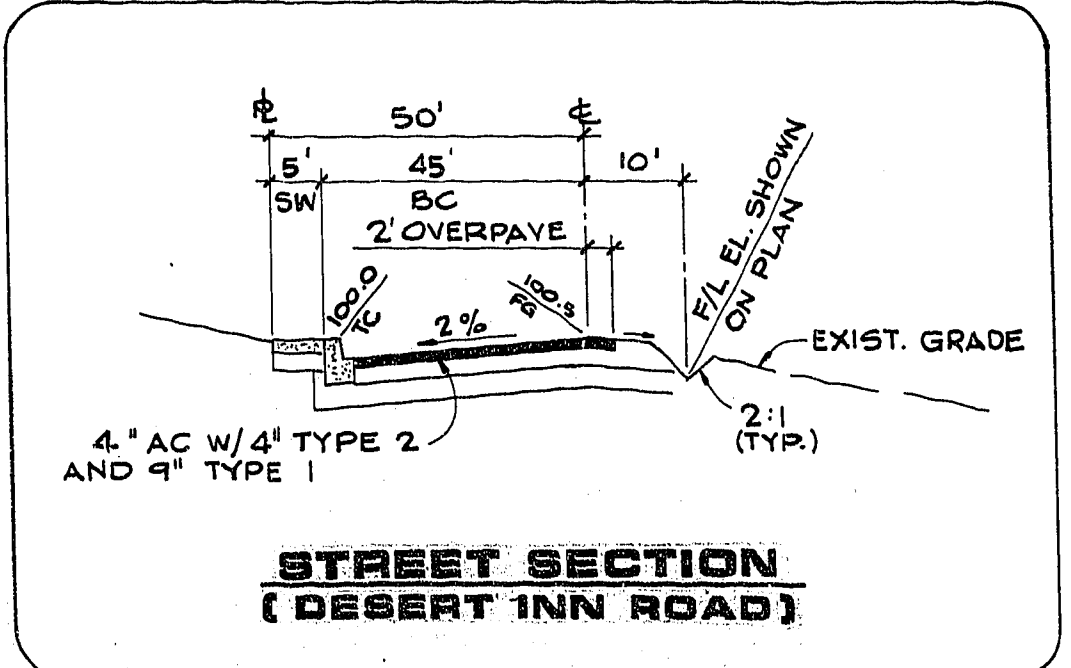
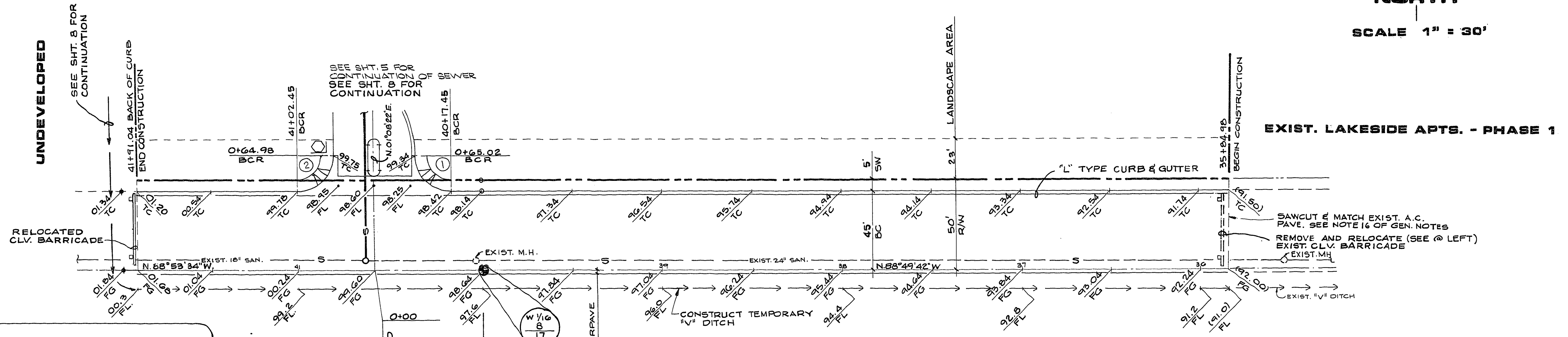
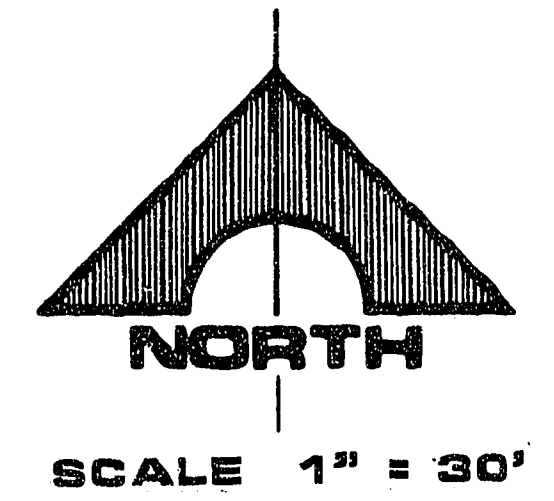


PROFILE
SCALE: HORIZ. 1" = 30'
VERT. 1" = 3'



DESERT INN ROAD

BCR CURVE DATA

NO.	Δ	R	L	T
1	90°01'56"	20.00'	31.43'	20.01'
2	89°58'04"	20.00'	31.40'	19.99'

- NOTES:
1. CONSTRUCT CONCRETE COLLARS AROUND ALL (EXISTING & PROPOSED) MANHOLES.
 2. IMPROVEMENTS TO BE PROTECTED FROM EROSION.

REVISION	DATE	DESCRIPTION

RECORD COPY
 G.C. WALLACE, INC.
 ENGINEERING/ARCHITECTURE
 1535 SOUTH RAINBOW BLVD./LAS VEGAS, NEVADA 89102
 PROJECT NO. 207-38
 SHEET NO. 4
 OF 8 SHEETS

108 NO. 5543.5555

8184 DIETRICH-POST 6/3/22

207-38 107Y-2021-2