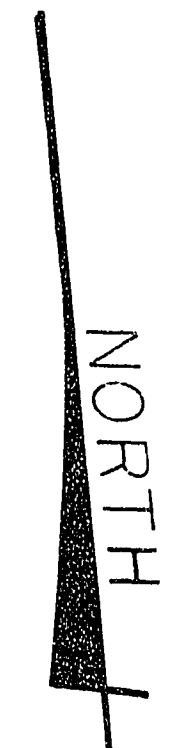
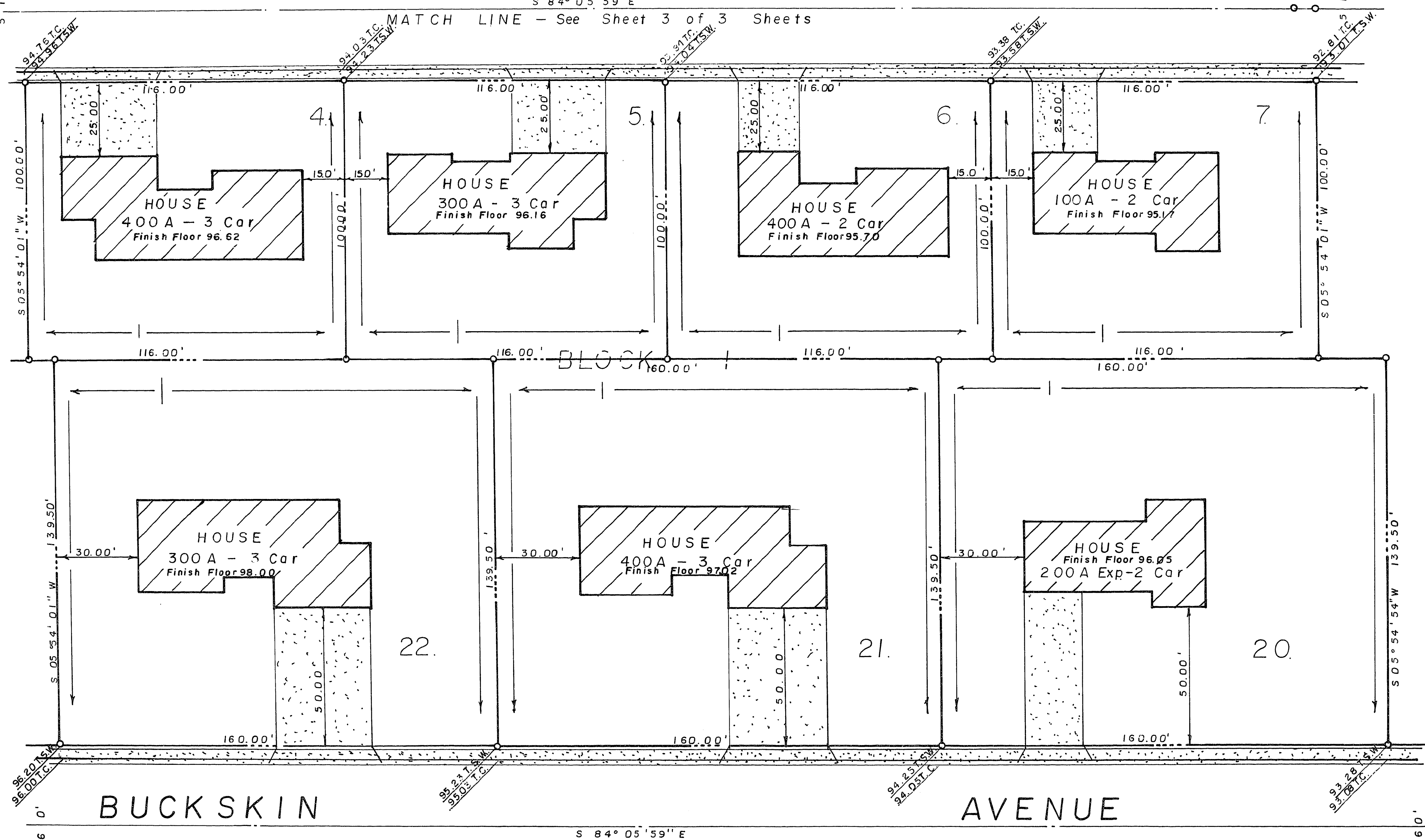


# ROCKING HORSE AVENUE

S 84° 05' 59" E

MATCH LINE - See Sheet 3 of 3 Sheets



Scale 1" = 20.00'

REVISIONS:	SCALE 1"=20.00' DATE 8/28/86	TITLE PLOT AND GRADING PLAN LIBERTY VILLAGE - TRACT III	<i>Bronken Engineering Chartered</i> 1818 INDUSTRIAL ROAD, LAS VEGAS, NEVADA 89102 (702) 382-6660	SHEET NUMBER 2 OF 3
------------	---------------------------------	---	--	------------------------

107Y-1984-III (8 of 16)  
20-7-67