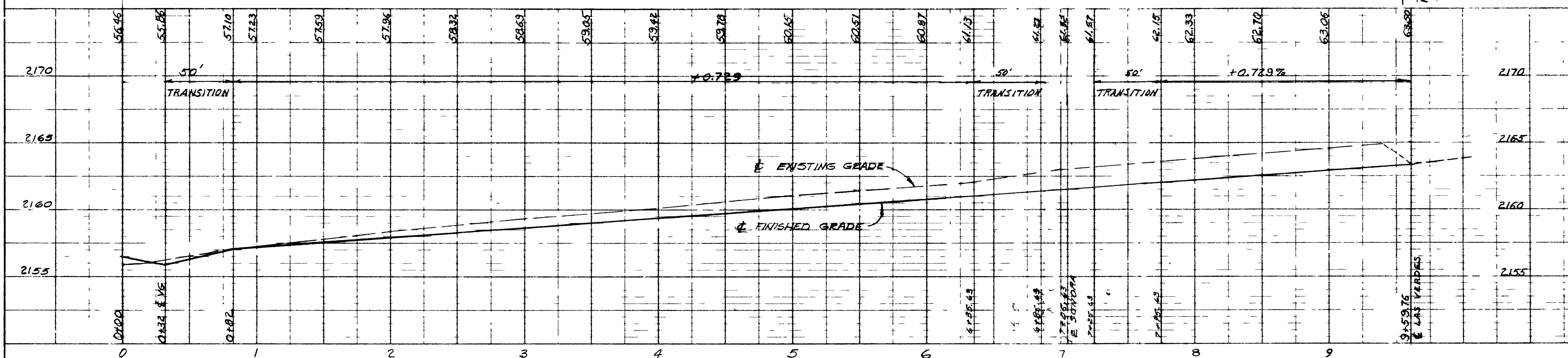
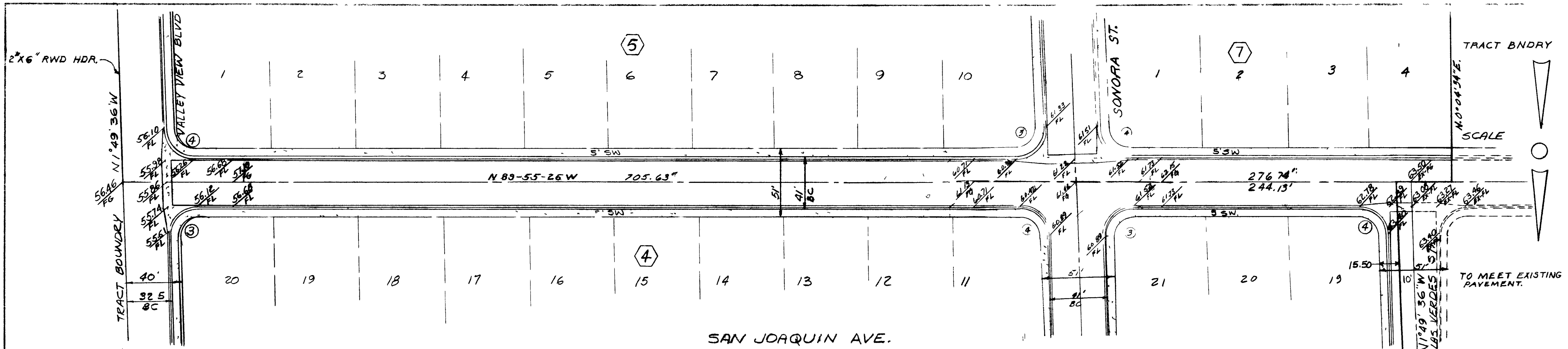
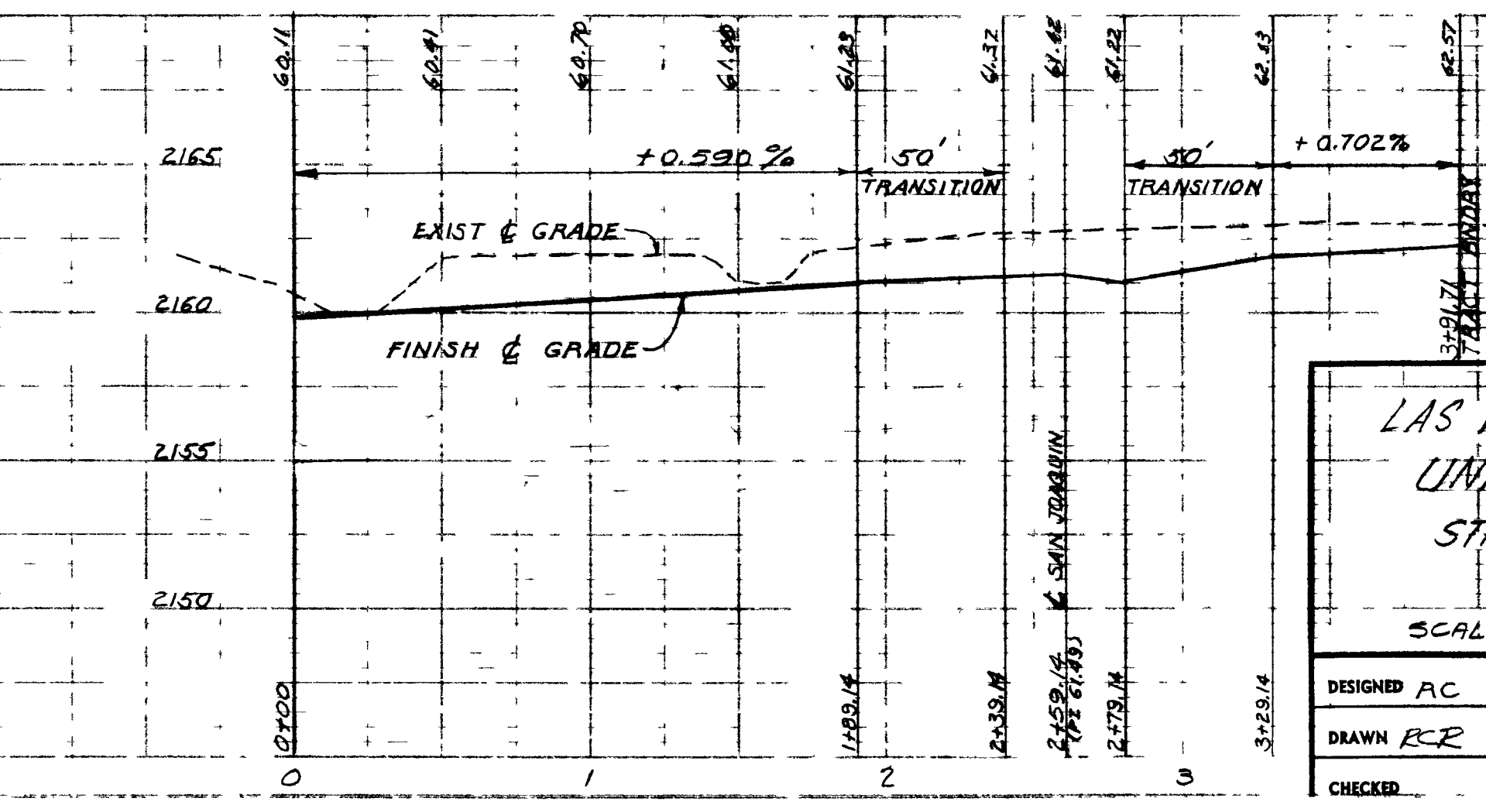
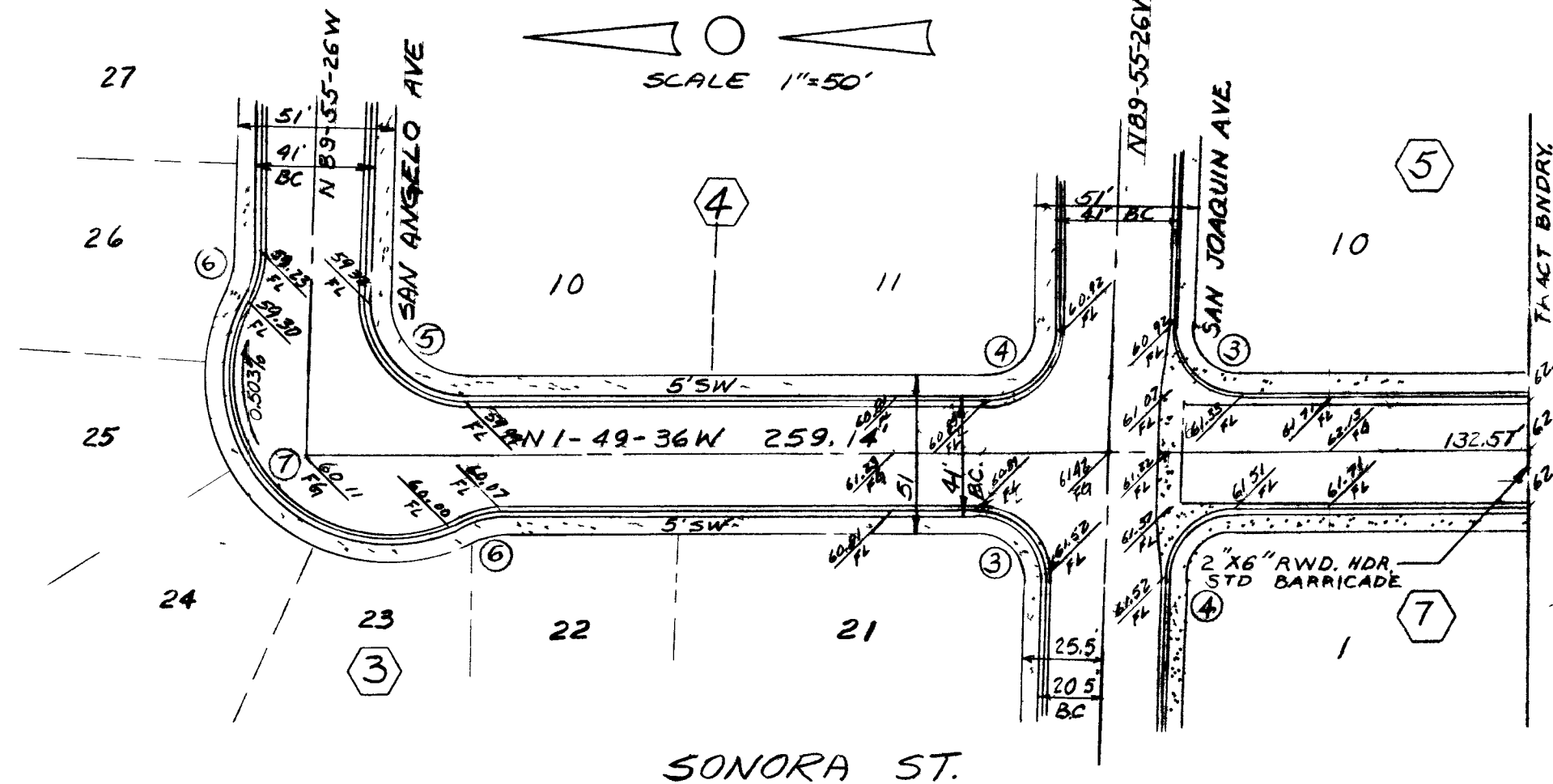
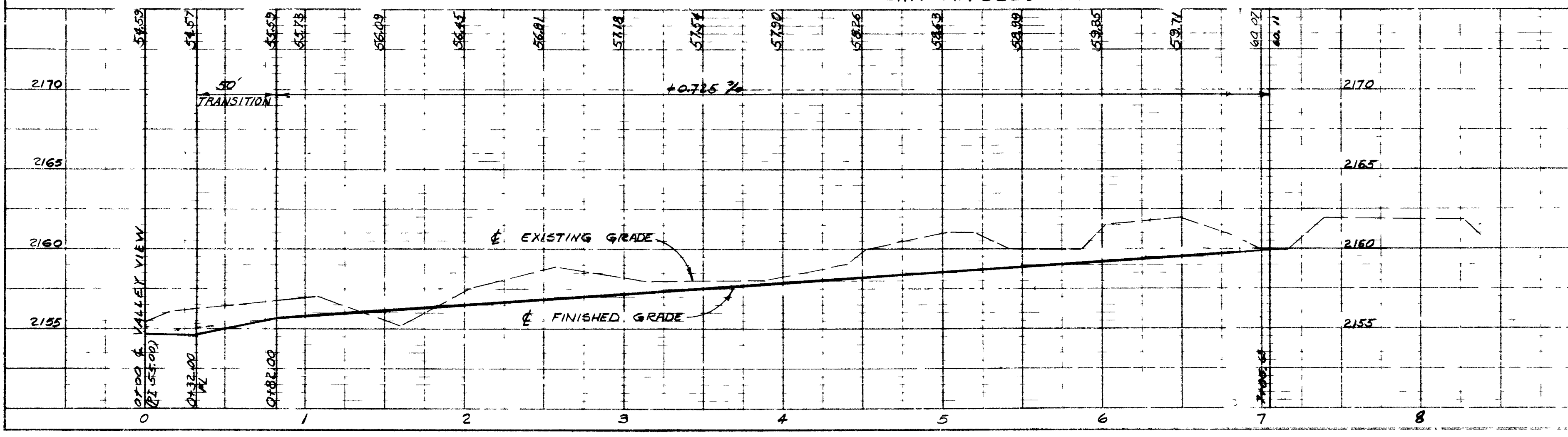
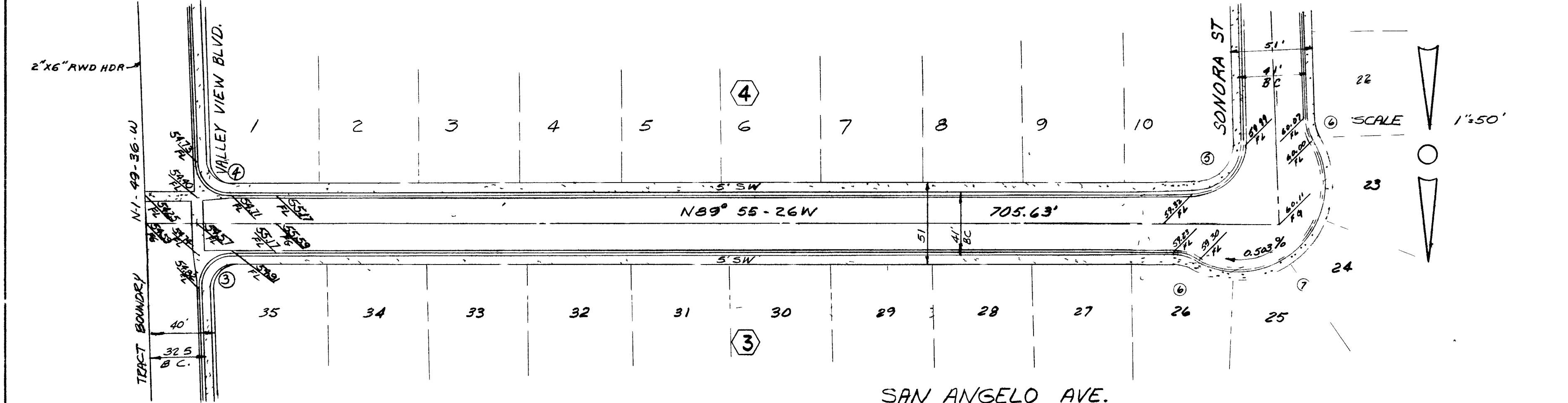


PLAN
 NOTE BOOK NO. 107
 DATE 12-19-62



REV	DATE	DESCRIPTION	BY	APP
1	12-19-62	Revised Elev. on SONORA ST. GWB and INTERSECT AT SAN JOAQUIN		

PROFILE
 NOTE BOOK NO. 107
 DATE 12-19-62

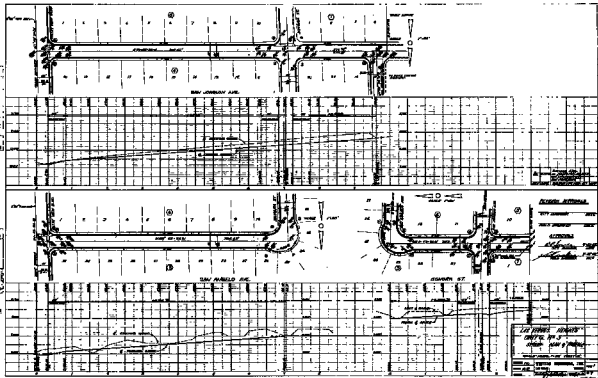


REVISION APPROVALS	
CITY ENGINEER	DATE
FIELD ENGINEER	DATE
<i>[Signature]</i>	9-21-62
<i>[Signature]</i>	9-24-62

**LAS VERDES HEIGHTS
 UNIT # 3
 STREET PLAN & PROFILE**

SCALE: HORIZ. 1"=50' VERT. 1"=5'

DESIGNED	AC	WESTERN ENGINEERS, INC.	SHEET 1
DRAWN	RCR	LAS VEGAS, NEVADA	
CHECKED		APPROVED: <i>[Signature]</i> DATE 12-20-62	OF 7



LEE FRANK ADAMS
 CIVIL ENGINEER
 1000 GOLDEN ST.
 SAN FRANCISCO, CALIF.
 1915

1000 GOLDEN ST.
 SAN FRANCISCO, CALIF.
 1915