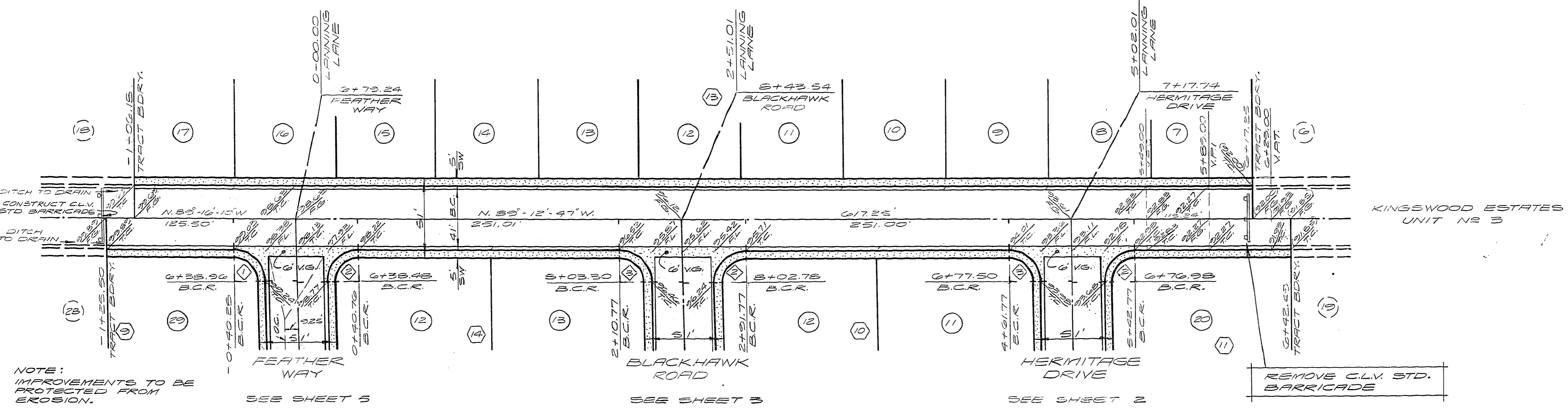


FUTURE DEVELOPMENT
 (KINGSWOOD ESTATES - UNIT NO 5)



NOTE:
 IMPROVEMENTS TO BE
 PROTECTED FROM
 EROSION.
 SEE SHEET 5

SEE SHEET 3

SEE SHEET 2

REMOVE CLV STD.
BARRICADE

LANNING

LANE

| B.C.R. CURVE DATA | | | | |
|-------------------|-------------|--------|--------|--------|
| NO | Δ | R | L | T |
| 1 | 85°-41'-36" | 20.00' | 31.31' | 19.89' |
| 2 | 90°-21'-47" | 20.00' | 31.54' | 20.13' |
| 3 | 85°-38'-15" | 20.00' | 31.29' | 19.87' |

APPROVED
William Thomas 4-21-78
 CLV CITY ENGINEER DATE
Robert Clark 4-20-78
 CLV FIELD OPERATIONS ENGINEER DATE
Paul 4/20/78
 CLV QUALITY CONTROL ENGINEER DATE
James L. MacFarlane 4-20-78
 CLV TRAFFIC ENGINEER DATE

SUBMITTED BY:
James L. MacFarlane 2/1/78
 JAMES L. MACFARLANE, RE. DATE
 NEVADA CERT. NO 3572

CONSULTING ENGINEERS • PLANNERS
 VITA Nevada
 100 PARKWAY • SUITE 100 • LAS VEGAS, NEVADA 89102
 (702) 735-1127

KINGSWOOD ESTATES - UNIT NO 4
STREET PLAN & PROFILE
LANNING LANE

| | | | | |
|-----------------|-----------------|--------------|-------|----|
| SCALE: | WO. NO. 2380-4 | DATE 1-30-78 | SHEET | OF |
| HORIZ: 1" = 40' | DES. J.E.M. #67 | REV. | 6 | 14 |
| VERT: 1" = 4' | CHK | REV. | | |

17-7-41

1079-1725-4