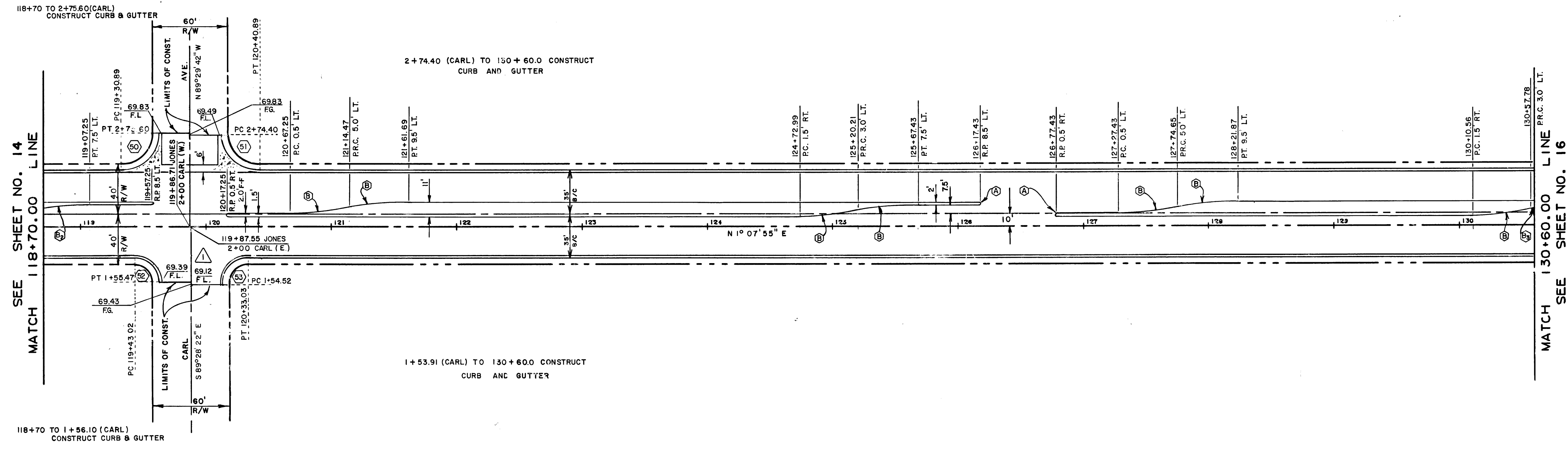


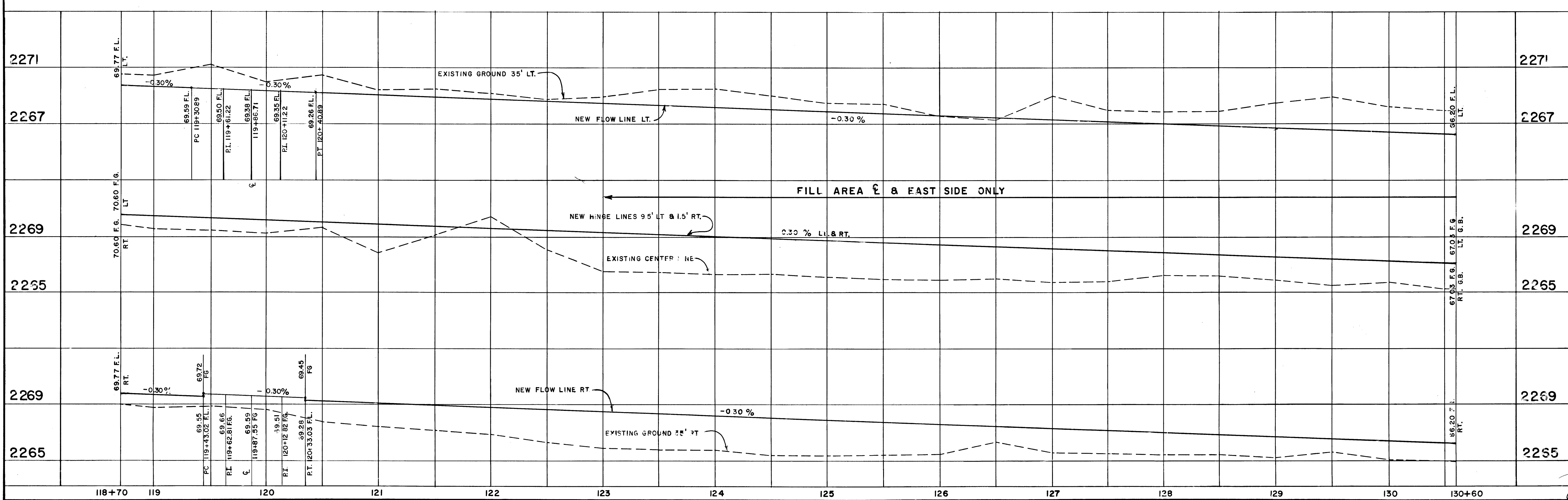
JONES BLVD.

CURVE DATA					
NO.	LOC.	DELTA	RADIUS	TANGENT	LENGTH
(A)	ISL	180° 00' 00"	1.00'		3.14'
(B)	ISL	10° 53' 15"	250.00'	23.82'	47.51'
(B ₁)	ISL	8° 34' 09"	250.00'	18.73'	37.39'
(B ₂)	ISL	0° 31' 03"	250.00'	1.13'	2.26'
(50)	BC	90° 37' 37"	30.00'	30.33'	47.45'
(51)	BC	89° 22' 23"	30.00'	29.67'	46.80'
(52)	BC	89° 23' 43"	20.00'	19.79'	31.20'
(53)	BC	90° 36' 17"	20.00'	20.21'	31.63'



NO.	DESCRIPTION	BY	DATE	APPROVAL
1	REMOVED VALLEY GUTTER		2/13/79	

REVISIONS



EXISTING UTILITIES ARE LOCATED ON THE PLANS FOR THE CONVENIENCE OF THE CONTRACTOR ONLY. THE CONTRACTOR SHALL BEAR FULL RESPONSIBILITY FOR PROTECTION OF UTILITIES AND THE CITY BEARS NO RESPONSIBILITY FOR UTILITIES NOT SHOWN ON THE PLANS OR NOT IN THE LOCATION SHOWN ON THE PLANS.

Department of Public Services
Engineering Design Division
JONES BOULEVARD
 CHARLESTON BLVD. TO
 SMOKE RANCH ROAD

scale (h) 1" = 50'	scale (v) 1" = 4'	drawing no.
w.o.no. 7694	f.bk.no. 74-9XA	107-V948A
design by L.J. ROHN	drawn by E.E. HUNT	date
approved by Director of Public Services		date 2/13/79

sht. 15 of 68

27-4-64

