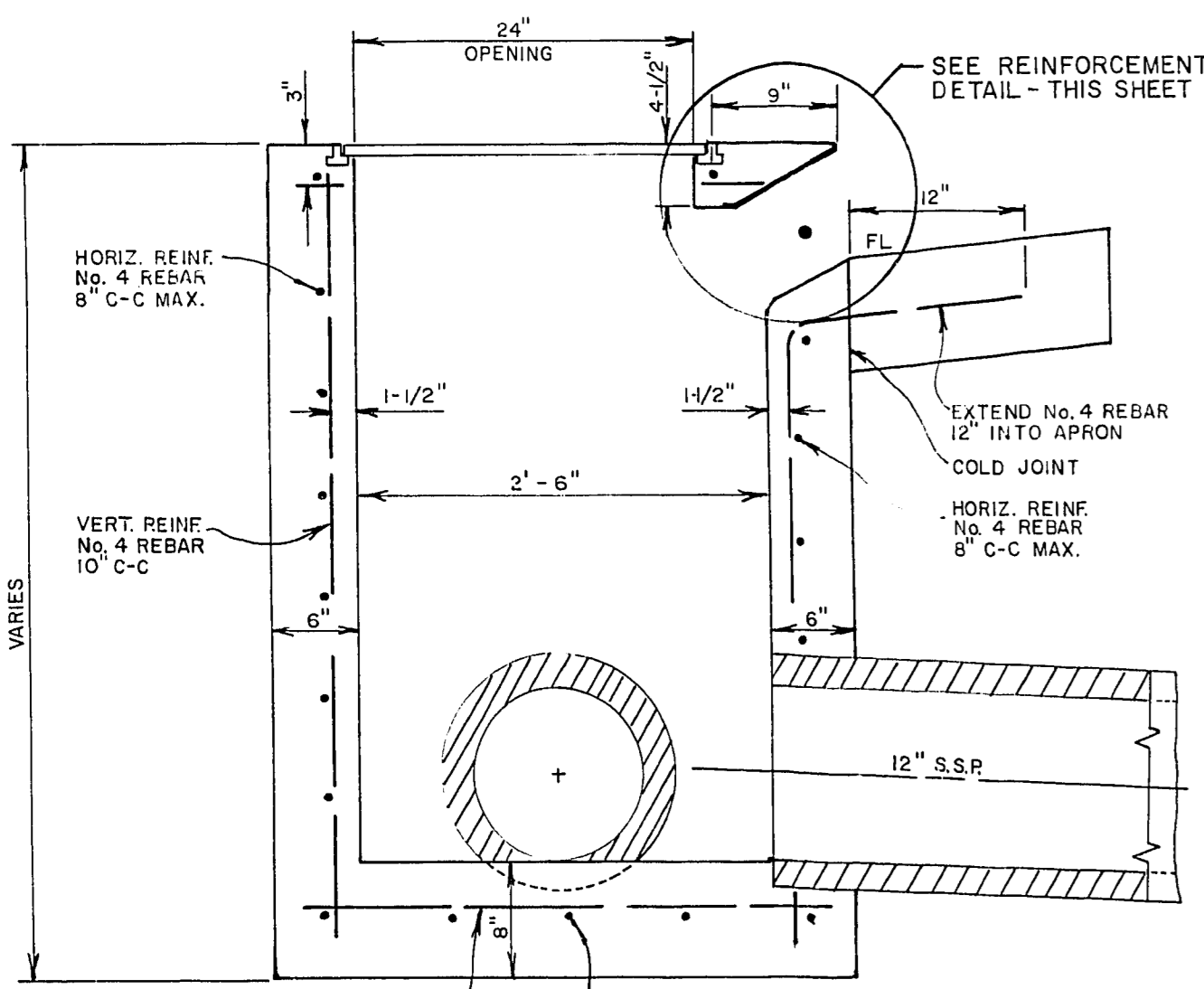


**DROP INLET TYPE 2 DETAIL**

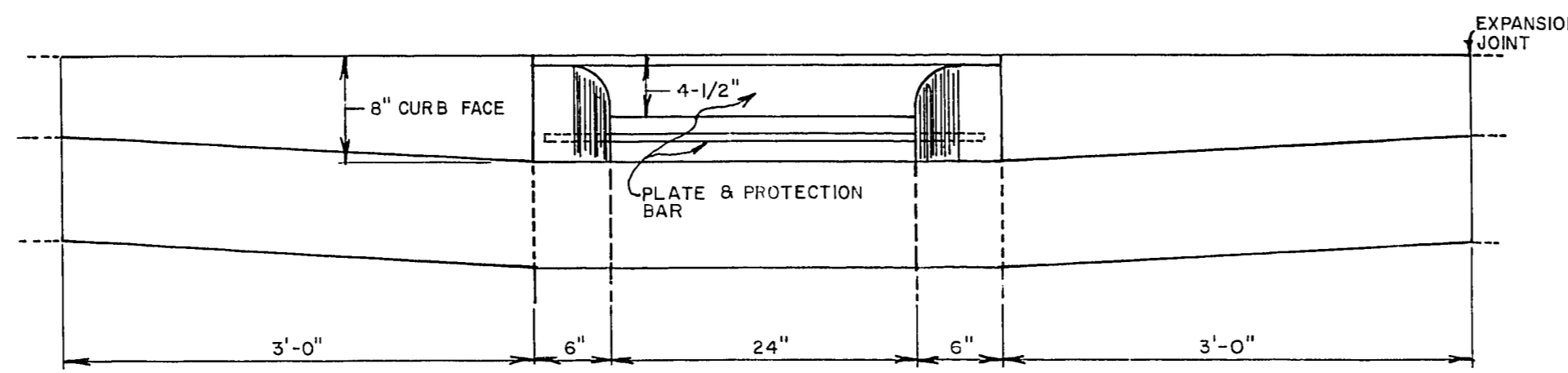
**TOP VIEW**

SCALE: 1"=1'



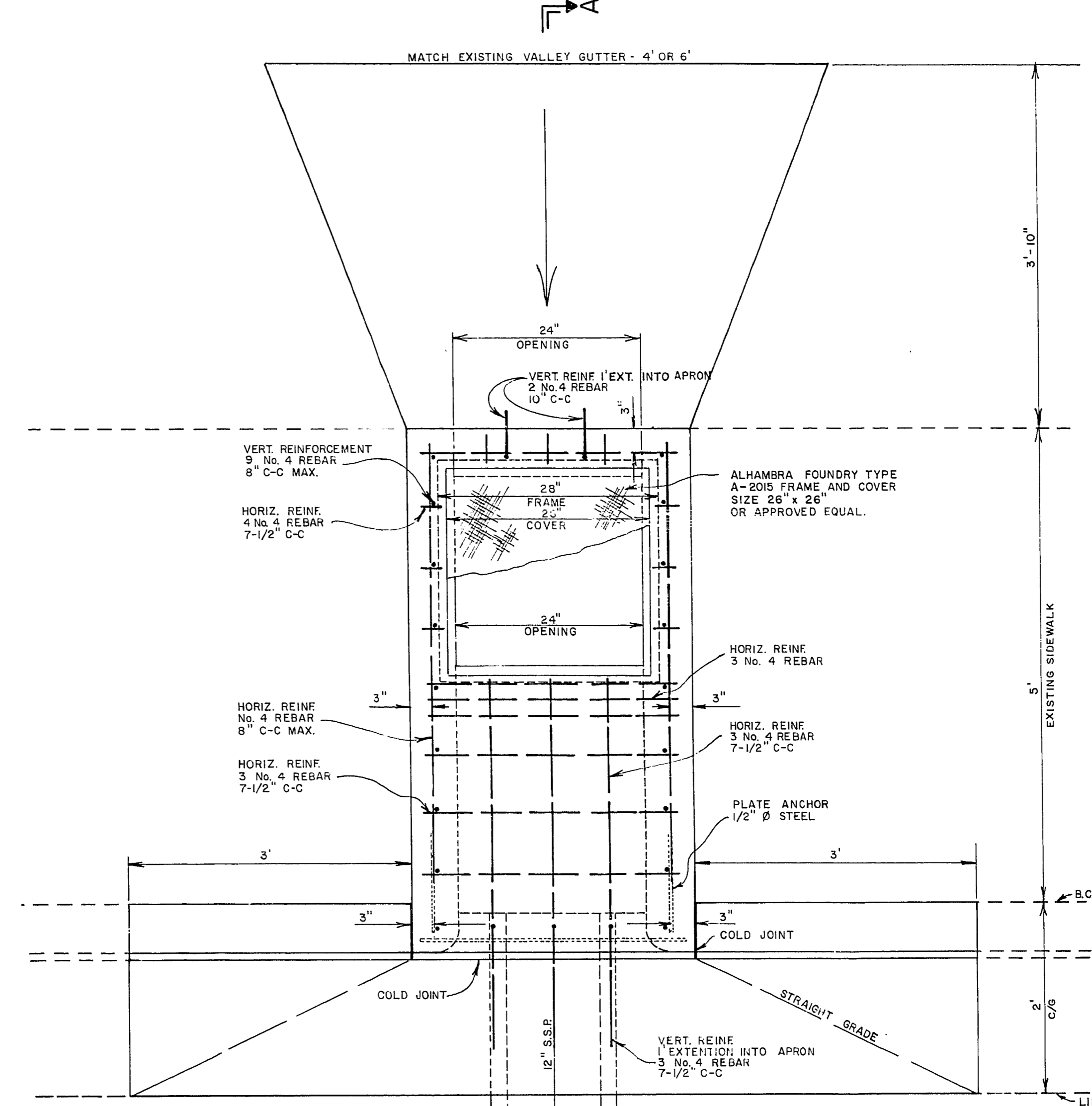
**SECTION B-B**

SCALE: 1"=1'



**FRONT VIEW**

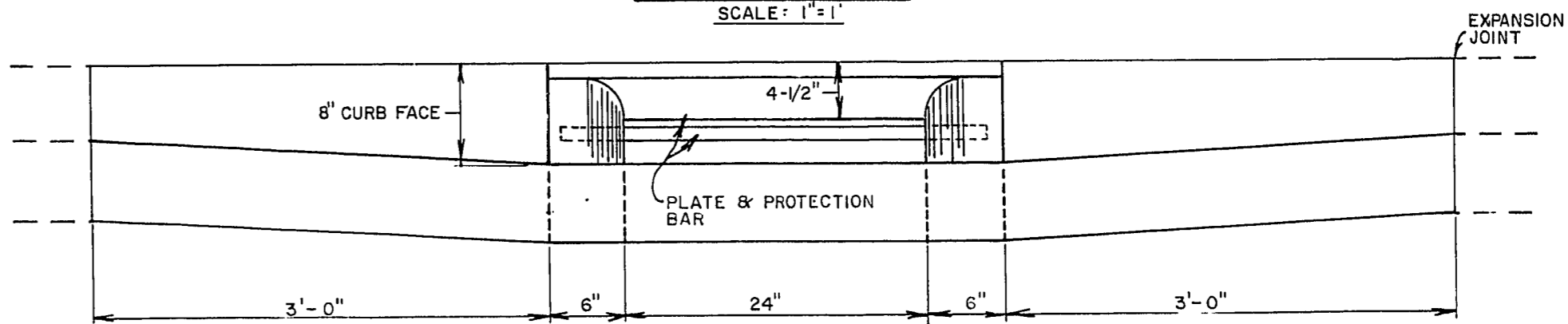
SCALE: 1"=1'



**DROP INLET TYPE 1 DETAIL**

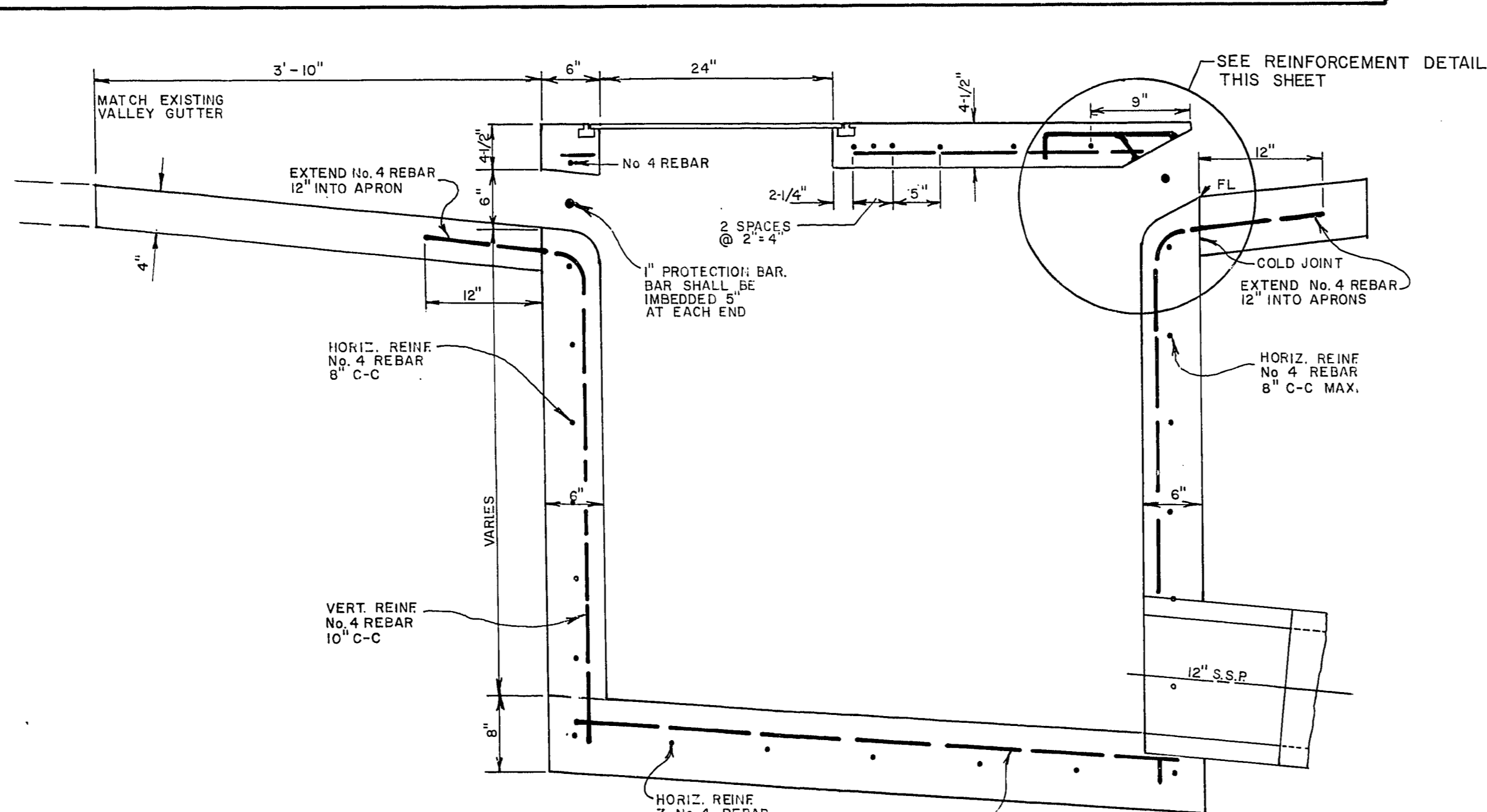
**TOP VIEW**

SCALE: 1"=1'



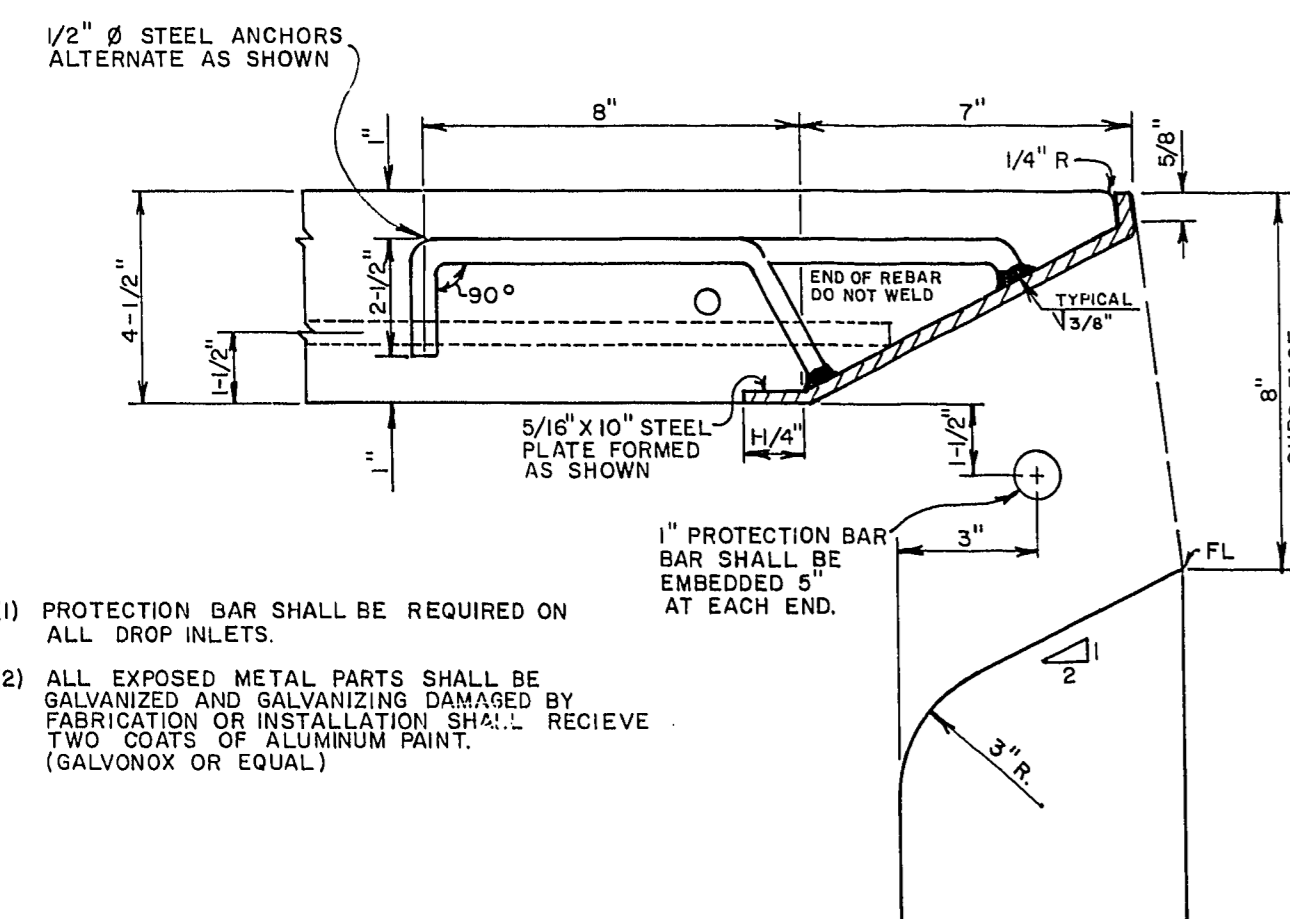
**FRONT VIEW**

SCALE: 1"=1'



**SECTION A-A**

SCALE: 1"=1'



**REINFORCEMENT DETAIL**

SCALE: 1"=4"

- (1) PROTECTION BAR SHALL BE REQUIRED ON ALL DROP INLETS.
- (2) ALL EXPOSED METAL PARTS SHALL BE GALVANIZED AND GALVANIZING DAMAGED BY FABRICATION OR INSTALLATION SHALL RECEIVE TWO COATS OF ALUMINUM PAINT (GALVONOX OR EQUAL).

|   |  |   |  |
|---|--|---|--|
| Date  |  | Revisions   |  |
| W.O. no. 7694                               |  | Scale (s) As Shown  |  |
| Scale (s) As Shown                          |  | Scale (v) As Shown  |  |
| Fid. bk. no. 74-9XA                         |  | Date  |  |
| Design by C. KREHNOVI                       |  | Drawn by P. WHITE   |  |
| Approved by the Director of Public Services |  | Date 12/1/78  |  |
| Engineering Design Division                 |  | DROP INLET DETAIL S                                       |  |
| Department of Public Services               |  | JONES BLVD.<br>CHARLESTON BLVD.<br>To<br>SMOKE RANCH ROAD |  |
| City of Los Angeles                         |  | County of Los Angeles                                     |  |
| Drawing no. 107-V948A                       |  | 20/68   |  |

FEB. 2, 1979

*Handwritten signature and date: 12/1/78*

75-4-46