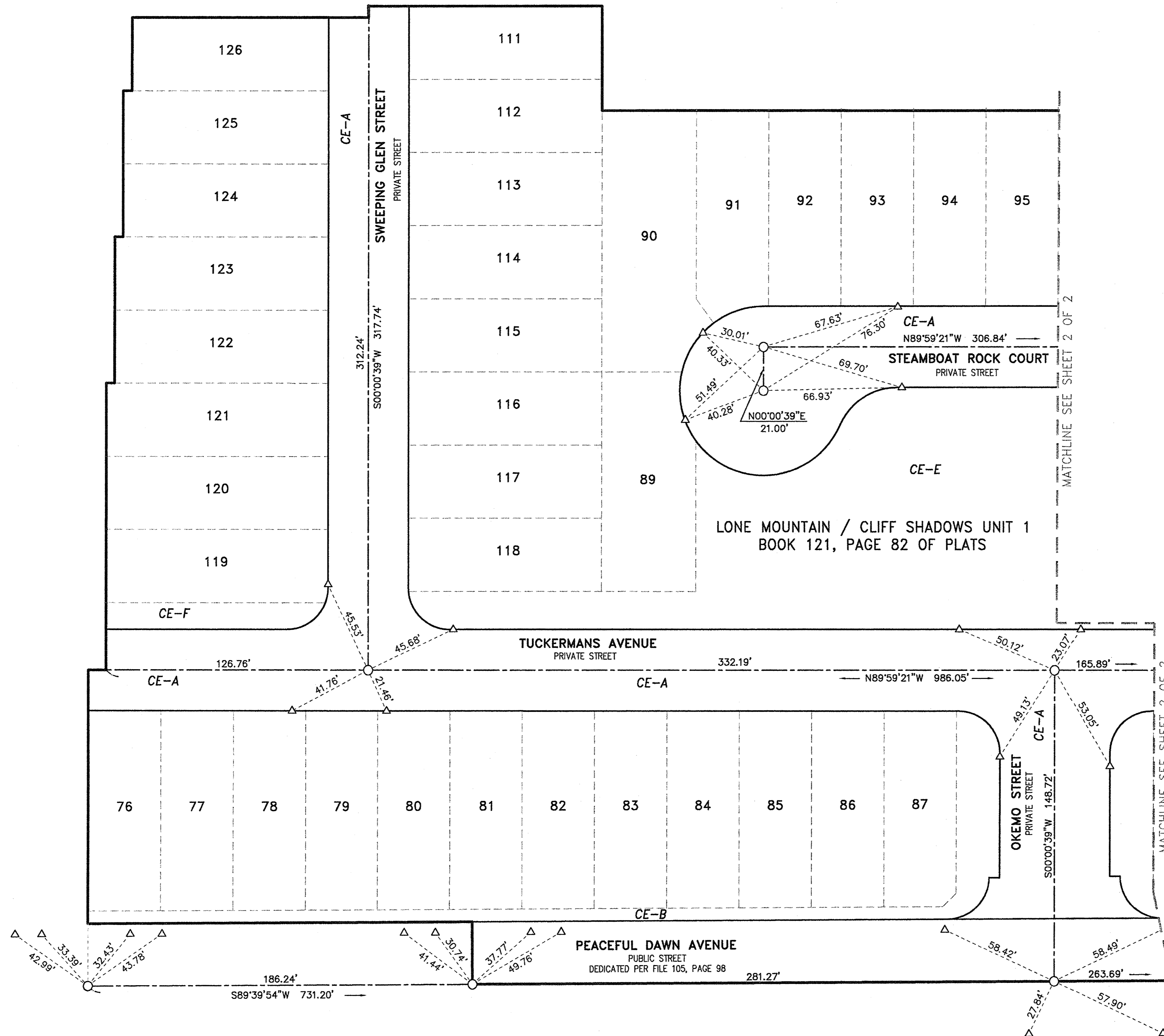


LONE MOUNTAIN / CLIFF SHADOWS - UNIT 1

RECORDED IN BOOK 121, PAGE 82 OF PLATS IN THE OFFICE OF THE COUNTY RECORDER, CLARK COUNTY, NEVADA. LYING WITHIN THE NORTH HALF (N 1/2) OF NORTHWEST QUARTER (NW 1/4) OF SECTION 1, TOWNSHIP 20 SOUTH, RANGE 59 EAST, M.D.M., CITY OF LAS VEGAS, CLARK COUNTY, NEVADA

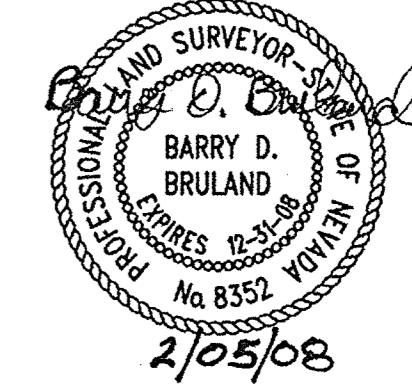


SURVEYOR'S CERTIFICATE:

I, BARRY D. BRULAND, A PROFESSIONAL LAND SURVEYOR, LICENSED IN THE STATE OF NEVADA AS AGENT FOR CARTER & BURGESS, INC. DO HEREBY CERTIFY THAT:

- THIS PLAT REPRESENTS THE RESULTS OF A SURVEY CONDUCTED UNDER MY DIRECT SUPERVISION AT THE INSTANCE OF LENNAR COMMUNITIES NEVADA, LLC, A NEVADA LIMITED LIABILITY COMPANY.
- THE MONUMENTS HAVE BEEN SET AND THE TIE DISTANCES ESTABLISHED AS SHOWN HEREON. THIS SURVEY WAS COMPLETED ON AUGUST 17, 2007.

BARRY D. BRULAND
PROFESSIONAL LAND SURVEYOR
NEVADA CERTIFICATE NO. 8352

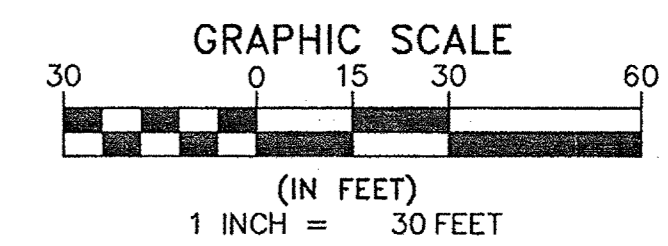
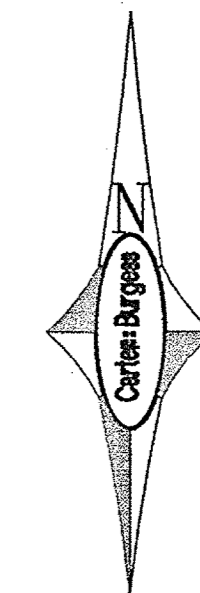


BASIS OF BEARINGS

NORTH 89°58'50" EAST - BEING THE NORTH LINE OF THE NORTHEAST QUARTER (NE 1/4) OF THE NORTHWEST QUARTER (NW 1/4) OF SECTION 1, TOWNSHIP 20 SOUTH, RANGE 59 EAST, M.D.M., CITY OF LAS VEGAS, CLARK COUNTY, NEVADA, AS SHOWN ON THAT CERTAIN PARCEL MAP RECORDED IN FILE 105, PAGE 98 OF PARCEL MAPS, IN THE CLARK COUNTY RECORDERS OFFICE, CLARK COUNTY, NEVADA.

LEGEND

- SUBDIVISION BOUNDARY LINE
- RIGHT-OF-WAY LINE STREET
- CENTERLINE
- LOT LINE
- 17/CE-A** LOT NUMBER/Common Element per Book 121, Page 82 of Plats
- TYPE III MONUMENTS SET PER PER BOOK 121, PAGE 82 OF PLATS STAMPED PLS 8352 UNLESS OTHERWISE NOTED
- TYPE IV MONUMENTS SET PER BOOK 121, PAGE 82 OF PLATS STAMPED PLS 8352
- MONUMENT AS DESCRIBED



UNIT 1 - FMP-5162

Carter Burgess		6655 Bermuda Road Las Vegas, Nevada 89119 (702) 938-5400 (702) 938-5454	
SCALE:	1"=30'	JOB NO.:	240740
DWG FILE:	740_MON	DRN. BY:	JF
DATE:	AUGUST 2007	CKD. BY:	BB
		SHEET	OF
		1	2

109219

058-4844-1