

NOTES:
 TOP OF POLE: 41'-0"
 STREET LIGHT ATTACHMENT: 40'-7"
 RAD CENTER OF ANTENNA: 39'-1"

KATHREIN SCALA
 MODEL KS741988
 1710-2170 MHz
 BANDED TO POLE
 DRILL 0.65" DIA HOLE
 (SEE DETAIL C ON THIS PAGE)

SH001 KIT 006
 DRILL 1 1/4" HOLE
 (SEE DETAIL C ON THIS PAGE)

FROM POWER SERVICE
 DISCONNECT VAULT
 TO SH001

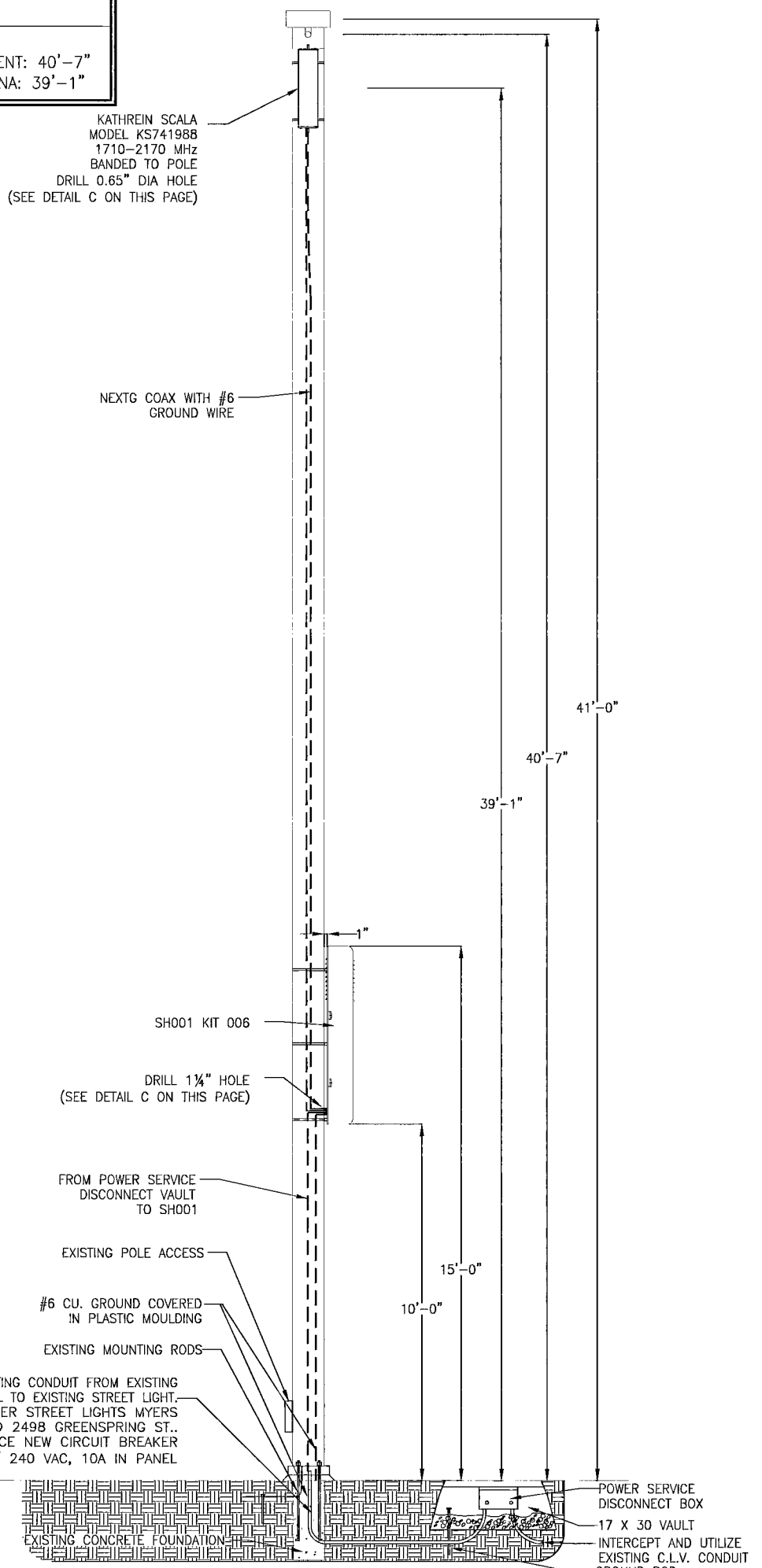
EXISTING POLE ACCESS

#6 CU. GROUND COVERED
 IN PLASTIC MOULDING

EXISTING MOUNTING RODS

INTERCEPT EXISTING CONDUIT FROM EXISTING
 METER PEDESTAL TO EXISTING STREET LIGHT.
 EXISTING POWER STREET LIGHTS MYERS
 CABINET @ 2498 GREENSPRING ST..
 PLACE NEW CIRCUIT BREAKER
 120 / 240 VAC, 10A IN PANEL

122773 CONCRETE STREET LIGHT DETAIL "A" LOOKING WEST SCALE: N.T.S.



SH001 KIT 006
 DRILL 1 1/4" HOLE
 (SEE DETAIL C ON THIS PAGE)

FROM POWER SERVICE
 DISCONNECT VAULT
 TO SH001

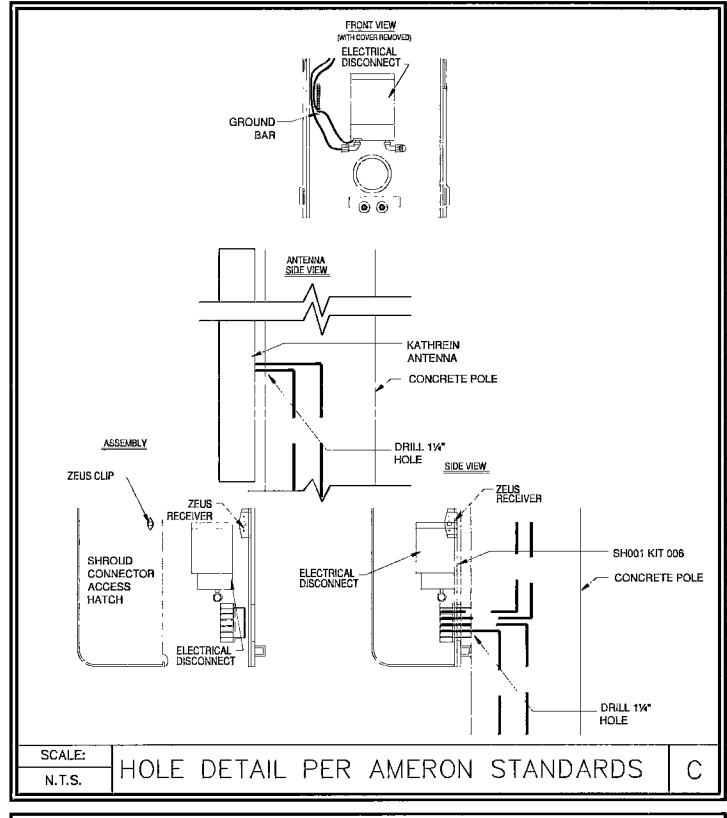
EXISTING POLE ACCESS

#6 CU. GROUND COVERED
 IN PLASTIC MOULDING

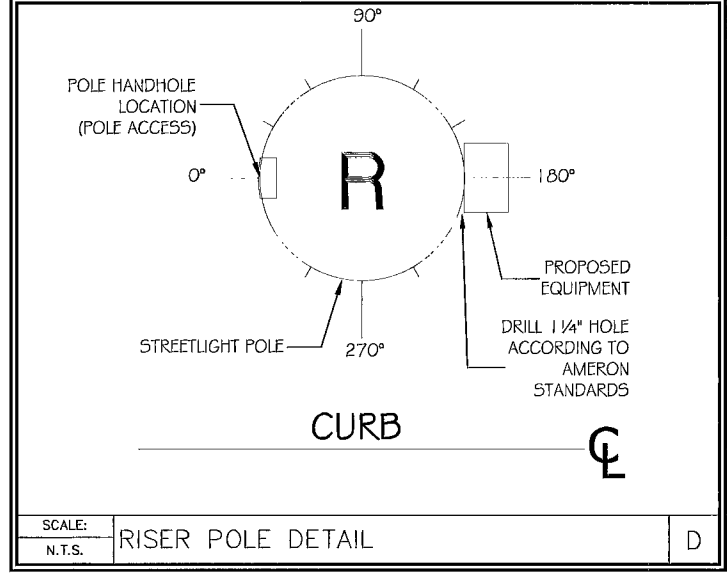
EXISTING MOUNTING RODS

INTERCEPT EXISTING CONDUIT FROM EXISTING
 METER PEDESTAL TO EXISTING STREET LIGHT.
 EXISTING POWER STREET LIGHTS MYERS
 CABINET @ 2498 GREENSPRING ST..
 PLACE NEW CIRCUIT BREAKER
 120 / 240 VAC, 10A IN PANEL

CONCRETE STREET LIGHT DETAIL "B" LOOKING NORTH SCALE: N.T.S.



SCALE: N.T.S. HOLE DETAIL PER AMERON STANDARDS C



SCALE: N.T.S. RISER POLE DETAIL D

Call before you Dig
 Avoid overhead power line contact. It's costly.
 Avoid cutting underground utility lines. It's costly.

Call before you OVERHEAD
 1-702-227-2929

Call 811
 OR
 1-800-227-2600
 AND
 CLARK COUNTY TRAFFIC OPERATIONS
 1-702-455-7544

NextG Networks of California, Inc.
 2216 O'TOOLE AVE.
 SAN JOSE, CALIFORNIA 95131
 PHONE: (408) 954-1580

PROJECT INFORMATION:
 SPR1009NV-SUMN009
 LAS VEGAS, NV 89134

CURRENT ISSUE DATE:
 03/16/2010

PERMIT SUBMISSION:
 REV. DATE: DESCRIPTION: BY:

REV.	DATE	DESCRIPTION	BY

PLANS BY:
NextG Networks of California, Inc.
 REP:

COMMENTS:
 37670
 1070 5430 - TEL

SHEET TITLE:
POLE PROFILES

SHEET NUMBER: 2 REVISION: 2 OF 7