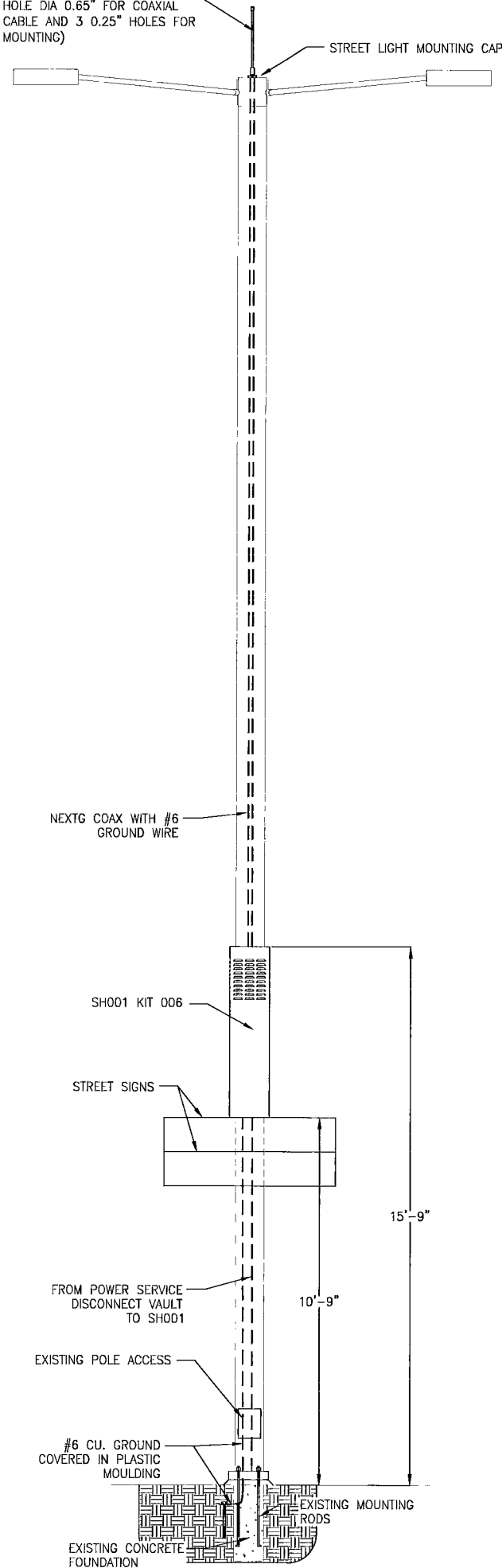


MAXRAD MODEL 19008A
1850-1990 MHz (PENETRATION
HOLE DIA 0.65" FOR COAXIAL
CABLE AND 3 0.25" HOLES FOR
MOUNTING)



122720
CONCRETE STREET LIGHT DETAIL "A"
LOOKING WEST SCALE: N.T.S.

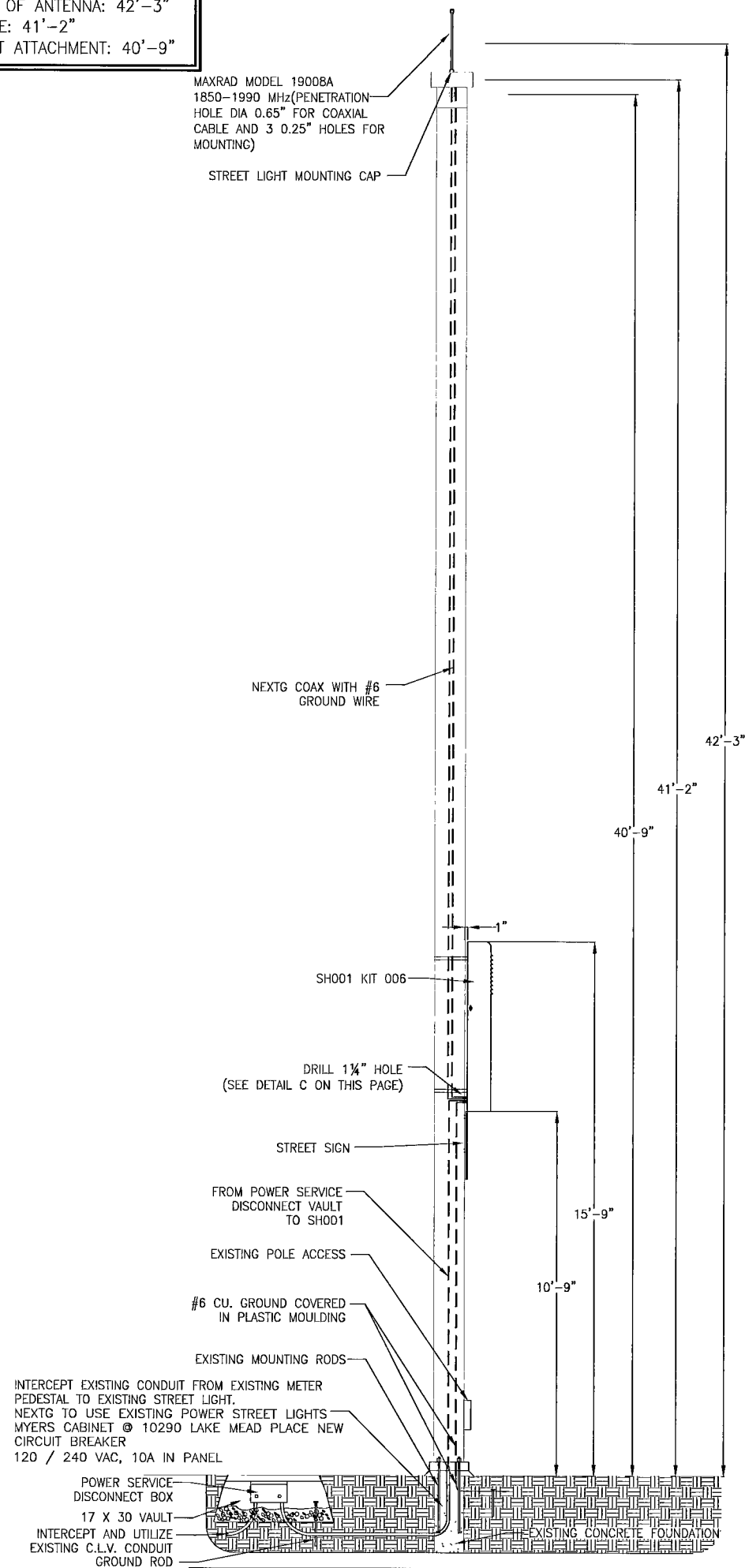
NOTES:

RAD CENTER OF ANTENNA: 42'-3"
TOP OF POLE: 41'-2"
STREET LIGHT ATTACHMENT: 40'-9"

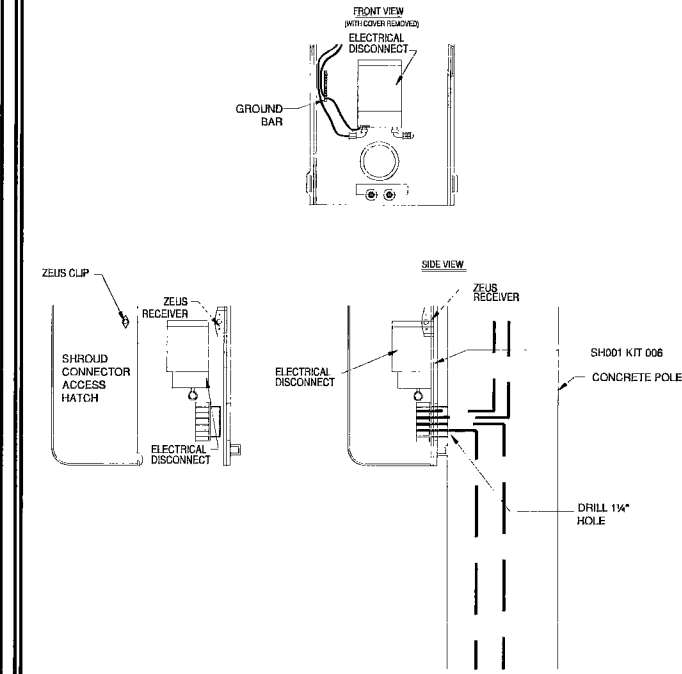
MAXRAD MODEL 19008A
1850-1990 MHz (PENETRATION
HOLE DIA 0.65" FOR COAXIAL
CABLE AND 3 0.25" HOLES FOR
MOUNTING)

STREET LIGHT MOUNTING CAP

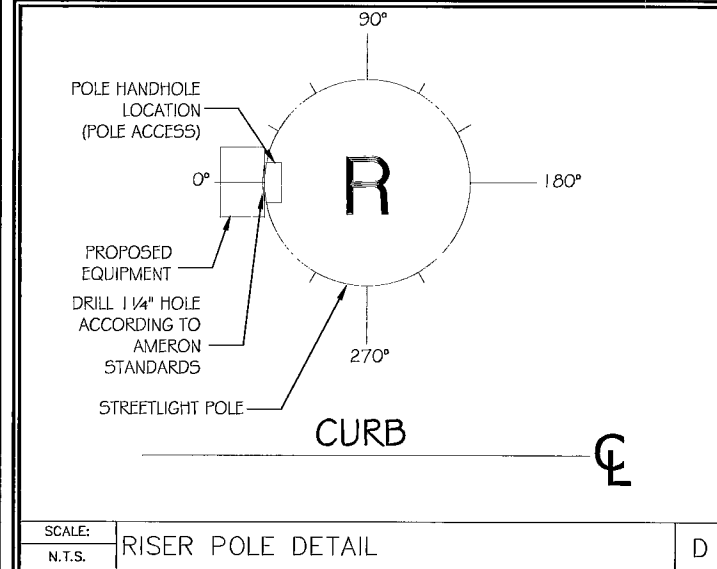
NEXTG COAX WITH #6
GROUND WIRE



CONCRETE STREET LIGHT DETAIL "B"
LOOKING NORTH SCALE: N.T.S.



SCALE: N.T.S. HOLE DETAIL PER AMERON STANDARDS C



SCALE: N.T.S. RISER POLE DETAIL D

Call before you Dig
Avoid overhead power line contact. It's costly.
Avoid cutting underground utility lines. It's costly.

Call before you OVERHEAD
1-702-227-2929

Call 811
OR
1-800-227-2600
AND
CLARK COUNTY TRAFFIC OPERATIONS
1-702-455-7544

NextG Networks of California, Inc.
2216 O'TOOLE AVE.
SAN JOSE, CALIFORNIA 95131
PHONE: (408) 954-1580

PROJECT INFORMATION:

SPR1009NV-SUMN007
LAS VEGAS, NV 89134

CURRENT ISSUE DATE:

03/10/2010

PERMIT SUBMISSION:

REV. DATE DESCRIPTION BY:

PLANS BY:

NextG Networks of California, Inc.

REP:

COMMENTS:

37697
10705427 - TEL

SHEET TITLE:

SHEET NUMBER: REVISION:

2 2 OF 6