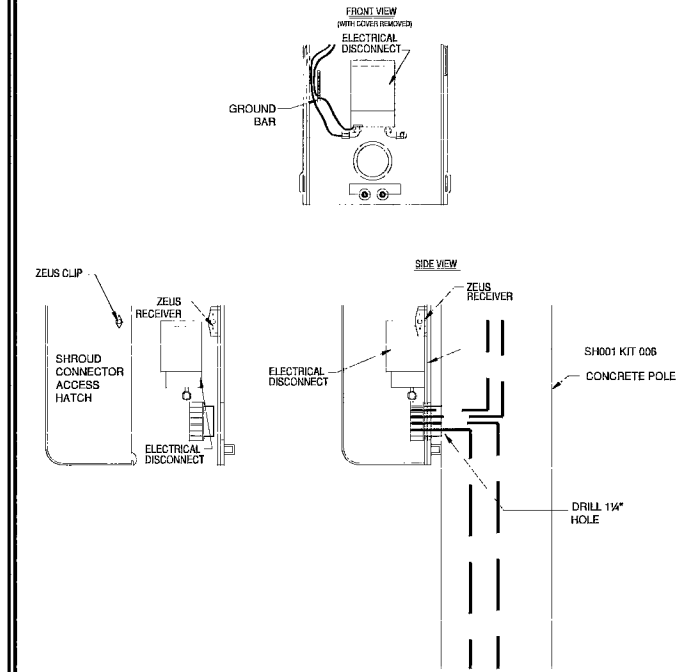
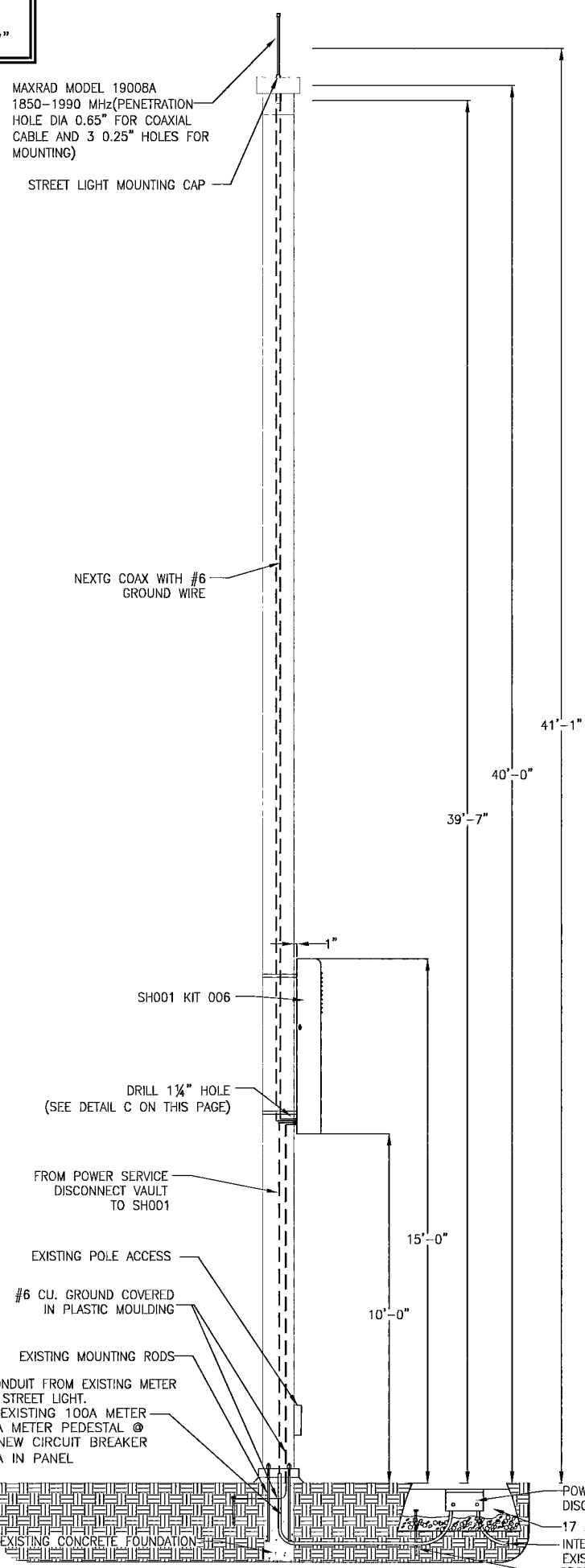
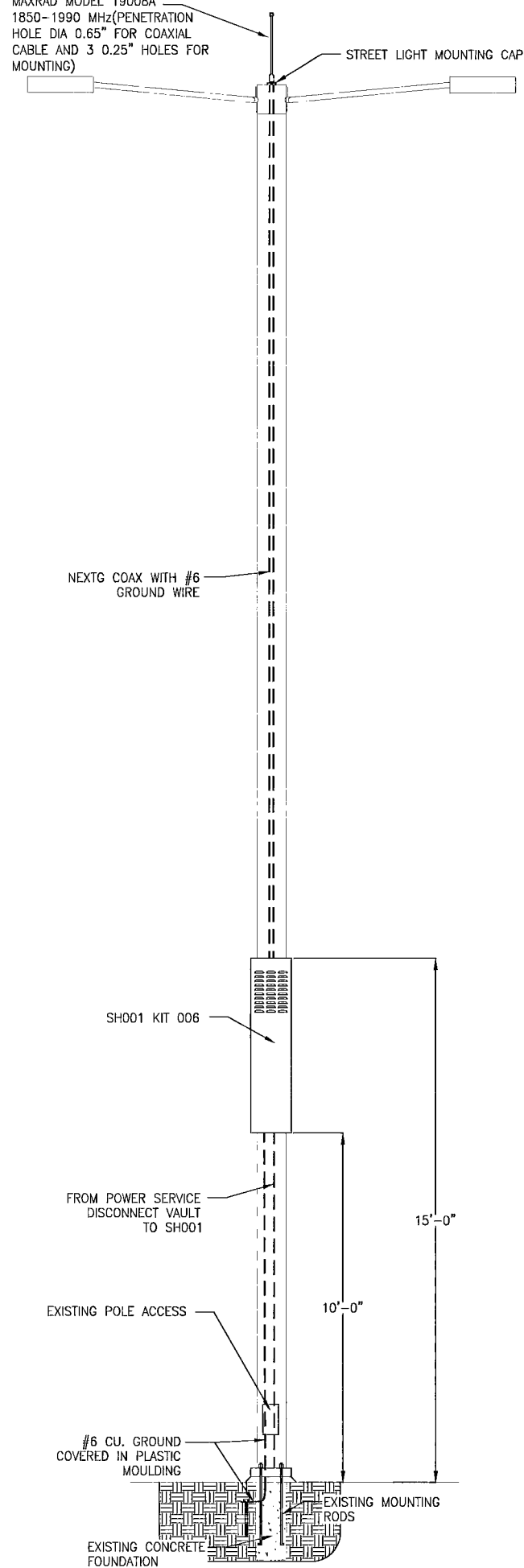


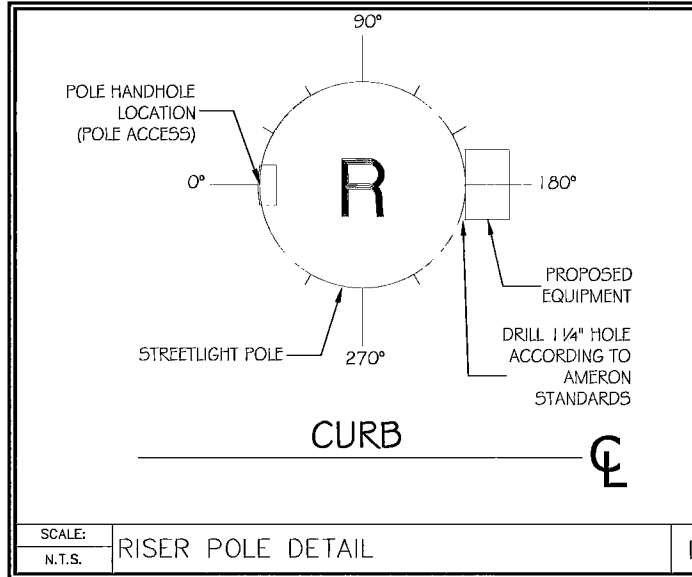
MAXRAD MODEL 19008A
1850-1990 MHz (PENETRATION
HOLE DIA 0.65" FOR COAXIAL
CABLE AND 3 0.25" HOLES FOR
MOUNTING)

NOTES:
RAD CENTER OF ANTENNA: 41'-1"
TOP OF POLE: 40'-0"
STREET LIGHT ATTACHMENT: 39'-7"

MAXRAD MODEL 19008A
1850-1990 MHz (PENETRATION
HOLE DIA 0.65" FOR COAXIAL
CABLE AND 3 0.25" HOLES FOR
MOUNTING)



SCALE: N.T.S. HOLE DETAIL PER AMERON STANDARDS C



Call before you Dig
Avoid overhead power line contact. It's costly.
Call before you OVERHEAD
1-702-227-2929
Call 811
OR
1-800-227-2600
AND
CLARK COUNTY TRAFFIC OPERATIONS
1-702-455-7544

NextG Networks of California, Inc.
2216 O'TOOLE AVE.
SAN JOSE, CALIFORNIA 95131
PHONE: (408) 954-1580

PROJECT INFORMATION:
SPR1009NV-SUMN016M1
LAS VEGAS, NV 89144

CURRENT ISSUE DATE:
03/10/2010

PERMIT SUBMISSION:

REV. DATE DESCRIPTION BY:

REV.	DATE	DESCRIPTION	BY

PLANS BY:

NextG Networks of California, Inc.

REP:

COMMENTS:

H# 37705
DWG# 10705420-T&L

SHEET TITLE:

POLE PROFILES

SHEET NUMBER: REVISION:

2 2 OF 6

122858

CONCRETE STREET LIGHT DETAIL "A" SCALE: N.T.S. LOOKING NORTH

CONCRETE STREET LIGHT DETAIL "B" SCALE: N.T.S. LOOKING EAST