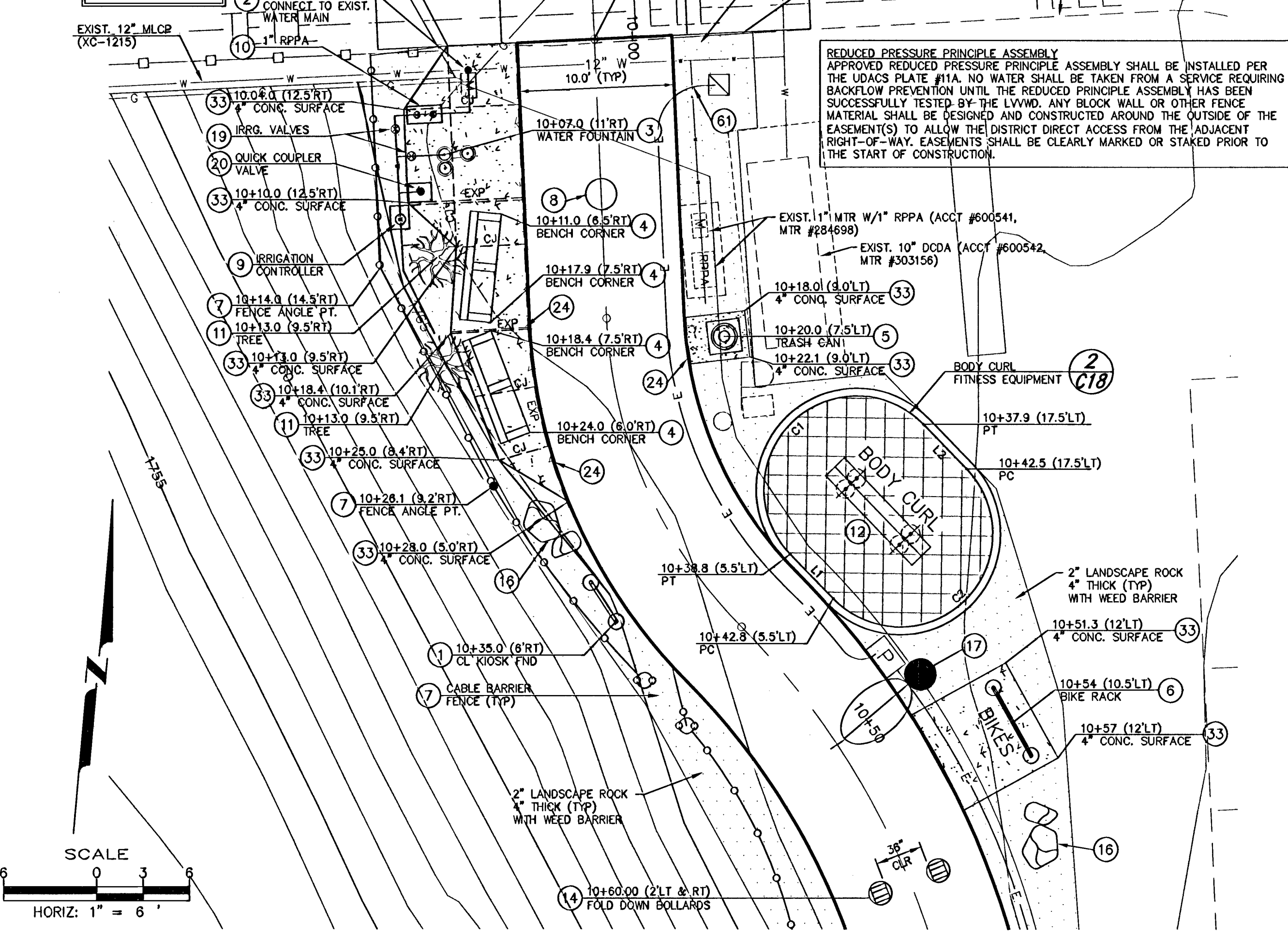


THIS PROPERTY MAY HAVE STATIC WATER PRESSURE IN EXCESS OF 80 PSI. THE UNIFORM PLUMBING CODE REQUIRES THAT INDIVIDUAL, ON-SITE (PRIVATE), PRESSURE REDUCING VALVES BE INSTALLED WHENEVER THE PRESSURE EXCEEDS 80 PSI. PRVS ARE THE DEVELOPERS RESPONSIBILITY, AND WILL NOT BE INSPECTED OR INCLUDED IN THE ACCEPTANCE OF LVWD FACILITIES. ESN.041 REV. 6/1/04

NOTE: USE BRASS PIPING AND FITTINGS BETWEEN METER AND RPPA



TRAIL HEAD PLAN @ BONANZA AVE. (SOUTH) 1
SCALE: 1"=6'

NOTE: REFERENCE CIVIL PLAN SHEETS FOR TRAIL GEOMETRICS, AND ADDITIONAL CONSTRUCTION NOTES & DETAILS.
REFERENCE ELECTRICAL SHEETS FOR SERVICE POINT CONNECTION LOCATION AND ELECTRICAL DETAILS.

SOFT-FALL CURB DATA

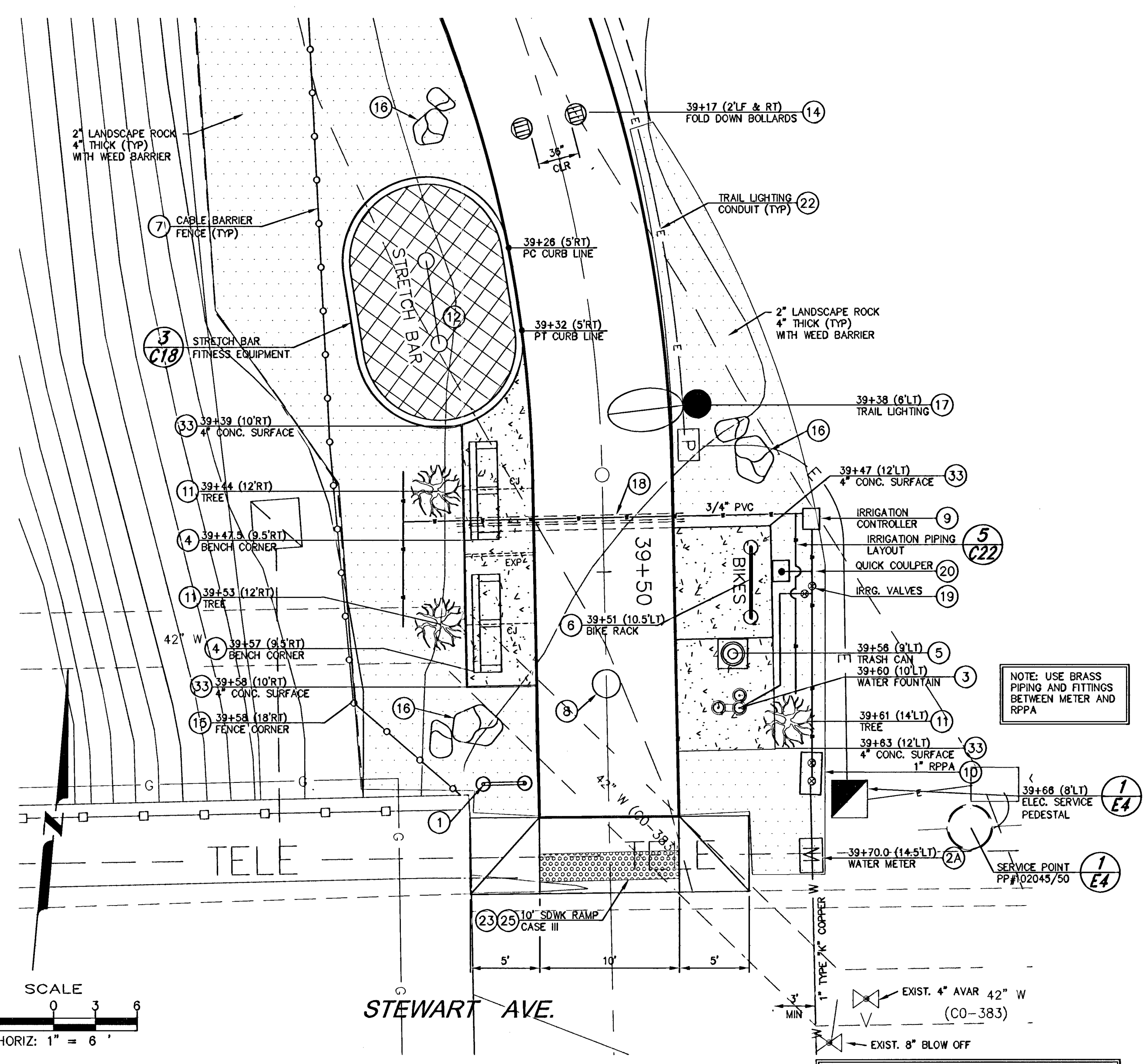
LINE	BEARING	LENGTH
L1	S44°14'55"E	4.00
L2	N44°14'55"W	4.00

CURVE DATA TABLE

CURVE	DELTA	RADIUS	LENGTH
C1	180°00'00"	6.00	18.85
C2	180°00'00"	6.00	18.85

CONSTRUCTION DETAILS:

- 1 INSTALL TRAIL HEAD KIOSK PER DETAIL
- 2 INSTALL 1" WATER SERVICE AND METER AT BONANZA AVE. SOUTH, PER UDACS 10.
- 2A INSTALL 1" WATER SERVICE AND METER AT STEWART AVE., PER UDACS 10.
- 3 INSTALL WATER FOUNTAIN PER DETAIL 3, SHT C17.
- 4 INSTALL SITE CONCRETE BENCH.
- 5 INSTALL PRECAST CONCRETE TRASH RECEPTACLE.
- 6 INSTALL BIKE RACK PER DETAIL 1, SHT C17.
- 7 INSTALL CABLE BARRIER FENCE PER DETAIL 1, SHEET 19.
- 8 INSTALL LAS VEGAS BRONZE MEDALLION & TRAIL MILEAGE MARKER PER DETAIL 4, SHT C21.
- 9 INSTALL BATTERY OPERATED IRRIGATION CONTROLLER PER DETAIL 1, SHT C23.
- 10 INSTALL 1" RPPA (BACKFLOW PREVENTION ASSEMBLY) PER UDACS 11A.
- 11 PLANT FRAXINUS VELUTINA "RIO GRANDE", 36" BOX TREE, WITH DRIP IRRIGATION EMITTERS PER DETAIL 7, SHT C22; AND DETAIL 2, SHT C23.
- 12 INSTALL FITNESS EQUIPMENT PER MANUFACTURERS RECOMMENDATIONS AND DETAIL.
- 13 INSTALL "DOG WALKER" SIGN AND PET WASTE STATION, PER DETAIL 5, SHT C21.
- 14 INSTALL FOLD DOWN BOLLARD PER DETAIL 1, SHT C4.
- 15 SAW-CUT, REMOVE AND REPLACE EXISTING CURB, GUTTER, SIDEWALK AND AC PAVEMENT AS REQUIRED FOR WATER SERVICE INSTALLATION, PER UDACS 6C, AND STD DWG 504. MATCH LINE AND GRADE OF EXISTING IMPROVEMENTS.
- 16 PLACE DECORATIVE GRANITE BOULDERS.
- 17 INSTALL 150 WATT TRAIL LIGHTING STANDARD AND POLE, PER DETAIL 1, SHT E5.
- 18 INSTALL 2 EACH 4" PVC PIPE SLEEVES PER DETAIL 4, SHT C23.
- 19 INSTALL IRRIGATION GATE VALVE PER DETAIL 5, SHT C23.
- 20 INSTALL QUICK COUPLER VALVE PER DETAIL 6, SHT C23.
- 21 INSTALL 12"x6" TAPPING SLEEVE WITH 6" TAPPING VALVE PER UDACS 22.
- 22 INSTALL PVC LIGHTING CONDUIT PER DETAIL 3, SHT E5. INSTALL ELECTRICAL WIRE PER WIRE SCHEDULES ON SHEETS E6 AND E7.
- 23 CONSTRUCT SIDEWALK RAMP CASE III PER STD DWG 235, MODIFIED TO 6" THICK CONCRETE (WIDTH PER PLAN).
- 24 INSTALL EXPANSION JOINT PER DETAIL 6, SHT C17.
- 25 REMOVE EXISTING CURB, GUTTER & SIDEWALK AS NECESSARY FOR NEW SIDEWALK RAMP CONSTRUCTION.
- 33 CONSTRUCT 4" THICK CONCRETE SURFACE ON 6" TYPE 2 AGGREGATE BASE.
- 61 CONCRETE ENCASE ELECTRICAL CONDUITS AS SPECIFIED IN NEVADA POWER T&D STANDARDS RC-2 AND RC-3.



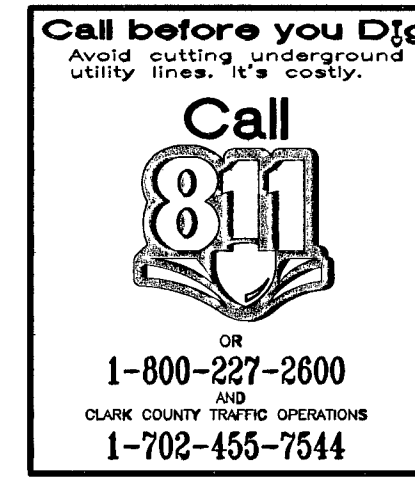
TRAIL HEAD PLAN @ STEWART AVE. 2
SCALE: 1"=6'

NOTE: REFERENCE CIVIL PLAN SHEETS FOR TRAIL GEOMETRICS, AND ADDITIONAL CONSTRUCTION NOTES & DETAILS.
REFERENCE ELECTRICAL SHEETS FOR SERVICE POINT CONNECTION LOCATION AND ELECTRICAL DETAILS.

THIS PROPERTY MAY HAVE STATIC WATER PRESSURE IN EXCESS OF 80 PSI. THE UNIFORM PLUMBING CODE REQUIRES THAT INDIVIDUAL, ON-SITE (PRIVATE), PRESSURE REDUCING VALVES BE INSTALLED WHENEVER THE PRESSURE EXCEEDS 80 PSI. PRVS ARE THE DEVELOPERS RESPONSIBILITY, AND WILL NOT BE INSPECTED OR INCLUDED IN THE ACCEPTANCE OF LVWD FACILITIES. ESN.041 REV. 6/1/04

REDUCED PRESSURE PRINCIPLE ASSEMBLY
APPROVED REDUCED PRESSURE PRINCIPLE ASSEMBLY SHALL BE INSTALLED PER THE UDACS PLATE #11A. NO WATER SHALL BE TAKEN FROM A SERVICE REQUIRING BACKFLOW PREVENTION UNTIL THE REDUCED PRINCIPLE ASSEMBLY HAS BEEN SUCCESSFULLY TESTED BY THE LVWD. ANY BLOCK WALL OR OTHER FENCE MATERIAL SHALL BE DESIGNED AND CONSTRUCTED AROUND THE OUTSIDE OF THE EASEMENT(S) TO ALLOW THE DISTRICT DIRECT ACCESS FROM THE ADJACENT RIGHT-OF-WAY. EASEMENTS SHALL BE CLEARLY MARKED OR STAKED PRIOR TO THE START OF CONSTRUCTION.

APPROVED FOR CONSTRUCTION
1st Approval 11/26/08
Las Vegas Valley Water District
PROJECT #114286



CITY OF LAS VEGAS - DEPARTMENT OF PUBLIC WORKS - ENGINEERING DIVISION

ENLARGED TRAILHEAD PLAN

LAS VEGAS WASH TRAIL - PHASE 1

BONANZA AVE & STEWART AVE.

PROJECT NO: FILE NAME: TRAIL-SHTS1-4.DWG

DATE: 6-16-06

SCALE: NOTED
DESIGN: DGR/DRA
DRAWN: DGR
CHECKED: DRA
APPROVED: DATE: 6-16-06

REVISIONS

NO.	DESCRIPTION	DATE	BY

11/16/08

ENGINEER: DONALD R. ALLISON
Exp: 12/31/08
CIVIL No. 6109

SHEET NO. C15

SHT. 19 OF 43
DWG No. 107V4396

HANSEN #12956



117271