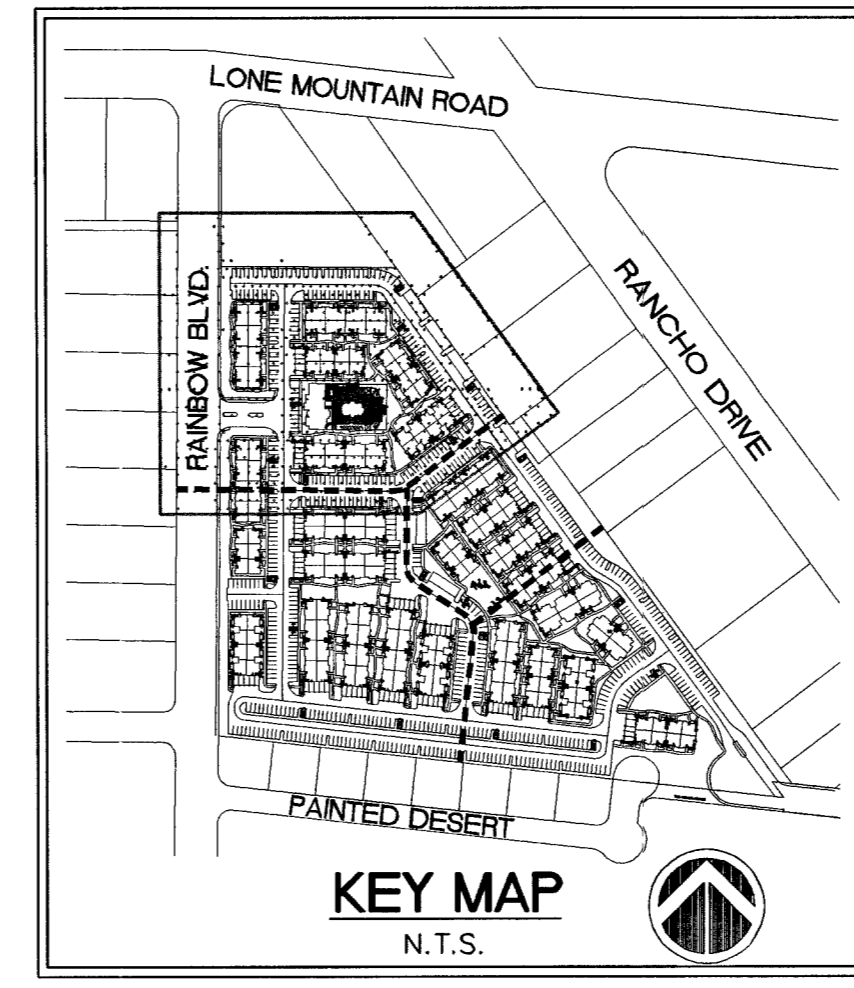
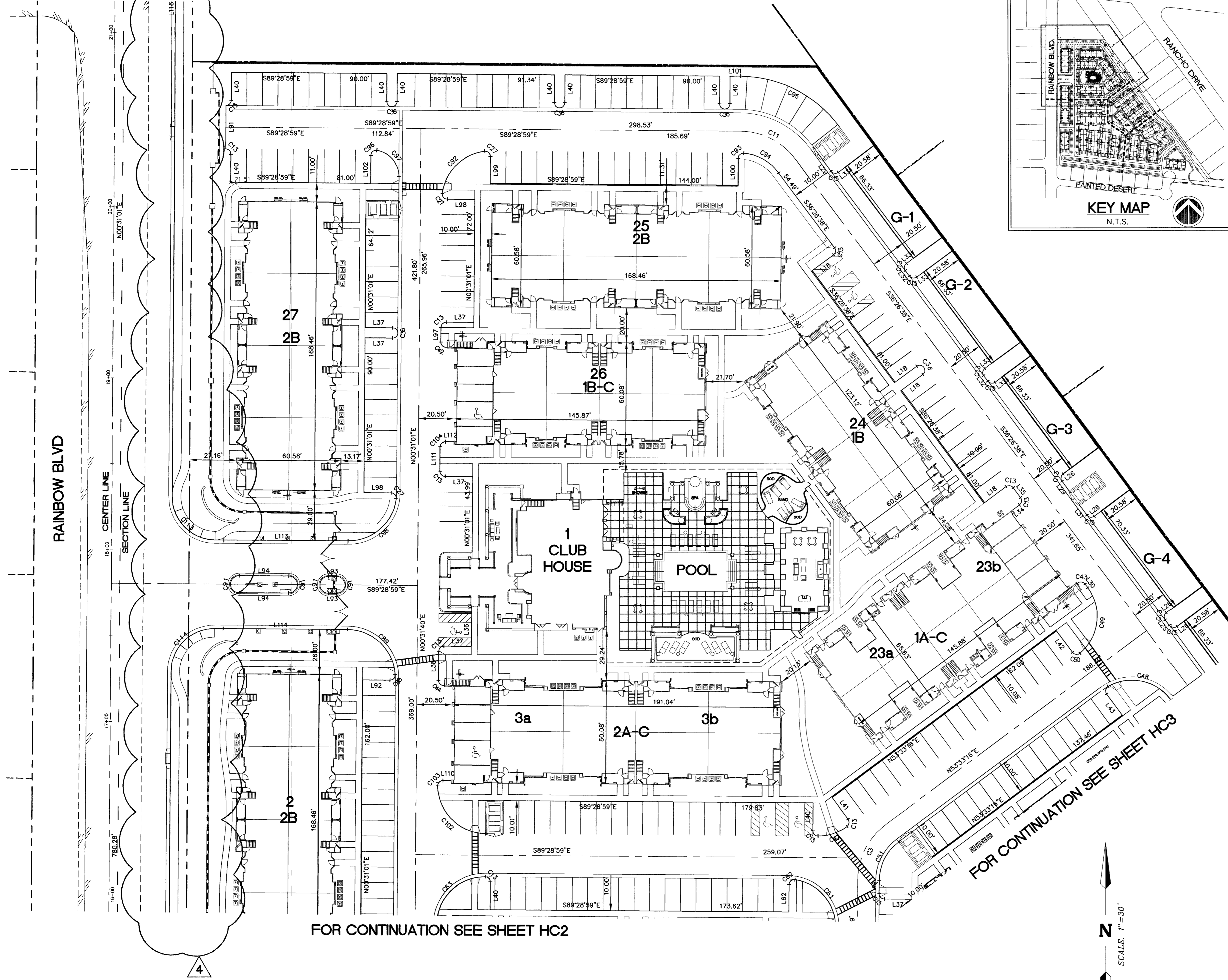
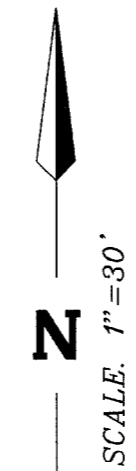


FOR CONTINUATION SEE SHEET HC3



LINE TABLE			CURVE TABLE				
No.	BEARING	DISTANCE	RADIUS	DELTA	LENGTH	TANGENT	
L1	N00°31'01"E	4.02	C1	40.50'	62°03'20"	43.86'	24.36'
L2	S06°13'50"W	26.50'	C2	40.50'	56°20'31"	39.83'	21.69'
L3	N36°26'38"E	22.00'	C3	40.50'	53°02'15"	37.49'	20.21'
L4	S53°33'18"W	15.78'	C4	22.50'	29°55'37"	65.29'	33.41'
L5	N36°26'38"E	16.00'	C5	22.50'	28°27'37"	52.23'	26.73'
L6	N44°41'02"W	16.16'	C6	22.50'	90°00'18"	35.34'	22.50'
L7	N47°39'49"W	16.16'	C7	100.00'	47°19'32"	82.60'	43.82'
L8	N83°45'52"E	16.00'	C8	4.00'	180°00'00"	12.57'	-----
L9	N06°13'50"E	10.40'	C9	125.00'	29°55'37"	65.29'	33.41'
L10	N83°45'52"E	4.91'	C10	100.00'	47°19'32"	82.23'	43.82'
L11	N78°22'10"W	15.95'	C11	40.50'	53°02'21"	37.49'	20.21'
L12	N06°13'50"E	4.95'	C12	40.50'	181°01'29"	127.96'	-----
L13	S36°26'38"E	15.82'	C13	3.00'	90°00'00"	4.71'	3.00'
L14	N53°33'22"E	14.00'	C14	3.00'	95°46'58"	5.07'	3.32'
L15	S53°33'16"W	16.00'	C15	112.50'	28°27'37"	51.95'	26.45'
L16	S36°26'38"E	18.16'	C16	112.50'	13°55'48"	27.35'	13.74'
L17	N36°26'38"W	5.77'	C17	93.50'	101°2'54"	16.67'	8.36'
L18	N53°33'22"E	16.00'	C18	3.00'	97°40'06"	5.11'	3.43'
L19	N53°33'22"E	14.00'	C19	28.00'	82°20'00"	40.24'	24.48'
L20	N36°26'38"W	6.00'	C20	131.50'	08°14'24"	18.91'	9.47'
L21	N23°48'27"E	13.88'	C21	3.00'	177°01'13"	9.27'	115.34'
L22	N23°48'27"E	14.00'	C22	131.50'	36°06'21"	82.87'	42.86'
L23	N53°33'22"E	4.48'	C23	3.00'	89°59'42"	4.71'	3.00'
L24	S36°26'38"E	20.41'	C24	87.50'	03°21'56"	5.14'	2.57'
L25	N36°26'38"W	4.00'	C25	3.00'	92°02'05"	4.82'	3.11'
L26	N53°33'22"E	5.00'	C26	68.50'	39°57'42"	47.78'	24.91'
L27	N53°33'22"E	5.00'	C27	3.00'	96°53'32"	5.07'	3.38'
L28	N36°26'38"W	20.69'	C28	28.00'	77°35'12"	37.92'	22.51'
L29	N36°26'38"W	7.00'	C29	3.00'	95°11'11"	5.00'	3.30'
L30	N36°26'38"W	2.58'	C30	3.00'	90°00'06"	4.71'	3.00'
L31	S36°26'41"E	7.02'	C31	50.00'	32°14'19"	28.13'	14.45'
L32	N36°26'50"W	4.00'	C32	40.50'	108°25'02"	76.64'	56.17'
L33	N53°33'10"W	5.00'	C33	19.50'	61°05'48"	20.79'	11.51'
L34	N53°33'22"E	4.98'	C34	25.00'	47°19'14"	20.85'	10.95'
L35	N36°26'38"W	7.08'	C35	50.00'	25°17'19"	22.07'	11.22'
L36	S00°31'01"W	19.76'	C36	3.00'	180°00'00"	9.42'	-----
L37	N89°28'59"W	16.00'	C37	156.50'	15°36'26"	42.63'	21.45'
L38	N36°26'44"E	15.96'	C38	135.50'	13°35'15"	37.11'	18.64'
L39	N89°28'59"W	4.98'	C39	154.50'	02°13'32"	6.00'	3.00'
L40	N00°31'01"E	16.00'	C40	68.50'	29°55'37"	35.78'	18.31'
L41	N36°26'44"E	16.00'	C41	3.00'	97°14'49"	5.09'	3.41'
L42	S36°26'44"E	15.96'	C42	3.00'	101°12'44"	5.30'	3.65'
L43	S36°26'44"E	15.82'	C43	100°48'20"	5.28'	3.83'	
L44	N00°31'01"E	7.76'	C44	3.00'	100°48'25"	5.28'	3.63'
L45	N00°31'01"E	4.00'	C45	3.00'	87°57'04"	4.61'	2.89'
L46	N89°28'59"W	15.74'	C46	28.00'	92°02'56"	44.98'	29.02'
L47	N55°49'30"W	7.00'	C47	28.00'	36°57'45"	18.06'	9.36'
L48	S34°10'30"W	16.00'	C48	28.00'	83°08'54"	40.61'	24.82'
L49	S37°50'31"W	16.08'	C49	28.00'	86°43'56"	42.39'	26.45'
L50	N83°46'10"W	15.83'	C50	3.00'	93°15'59"	4.88'	3.18'
L51	N83°46'10"W	15.95'	C51	28.00'	53°02'15"	25.92'	13.97'
L52	N83°46'10"W	15.82'	C52	3.00'	98°33'23"	5.14'	3.46'
L53	N55°49'30"W	4.85'	C53	28.00'	48°07'07"	23.52'	12.50'
L54	N55°49'30"W	9.51'	C54	3.00'	86°19'58"	4.52'	2.81'
L55	N06°13'50"E	29.34'	C55	72.00'	58°23'19"	73.37'	40.23'
L56	S89°28'59"E	13.34'	C56	28.00'	55°09'48"	26.96'	14.53'
L57	N00°31'01"E	13.42'	C57	101°33'37"	17.73'	12.25'	
L58	S89°28'59"E	1.75'	C58	10.00'	62°03'20"	10.83'	6.02'
L59	S89°28'59"E	6.17'	C59	10.00'	101°27'53"	17.71'	12.23'
L60	N00°31'01"E	20.62'	C60	3.00'	87°59'39"	4.61'	2.90'
L61	N89°28'59"W	6.15'	C61	28.00'	83°23'09"	40.75'	24.94'
L62	S00°31'01"W	15.72'	C62	3.00'	90°00'00"	5.16'	3.49'
L63	N89°28'59"W	1.50'	C63	28.00'	90°00'00"	43.98'	28.00'
L64	N89°28'59"W	5.92'	C64	3.00'	94°35'27"	4.95'	3.25'
L65	N00°31'01"E	12.21'	C65	28.00'	79°41'26"	38.94'	23.37'
L66	N00°31'01"E	3.00'	C66	3.00'	100°39'52"	5.27'	3.62'
L67	S89°28'59"E	15.92'	C67	3.00'	84°16'53"	4.41'	2.71'
L68	S83°45'52"E	4.09'	C68	3.00'	100°46'21"	5.28'	3.62'
L69	N00°31'01"E	10.64'	C69	3.00'	87°03'43"	4.56'	2.85'
L70	S83°45'52"E	19.16'	C70	3.00'	100°39'52"	5.27'	3.62'
L71	S83°45'52"E	19.27'	C71	3.00'	101°07'35"	5.29'	3.63'
L72	S03°17'33"W	7.96'	C72	3.00'	93°43'12"	4.91'	3.20'
L73	S06°14'08"W	5.00'	C73	28.00'	86°17'06"	42.17'	26.24'
L74	S83°45'52"E	21.54'	C74	28.00'	83°12'47"	40.67'	24.87'
L75	S83°45'52"E	15.82'	C75	10.00'	95°43'07"	16.71'	11.05'
L76	S83°45'52"E	1.74'	C76	10.00'	84°16'53"	14.71'	10.00'
L77	N83°45'52"E	20.64'	C77	10.00'	90°00'18"	15.71'	10.00'
L78	S06°14'08"W	16.00'	C78	10.00'	89°59'42"	15.71'	10.00'
L79	N83°45'52"E	3.00'	C79	3.00'	90°00'18"	4.71'	3.00'
L80	N89°28'59"W	6.00'	C80	35.00'	21°44'07"	13.28'	6.72'
L81	N06°13'50"W	4.00'	C81	35.00'	84°16'53"	14.71'	6.72'
L82	S83°45'52"E	9.32'	C82	35.00'	34°20'05"	20.97'	10.81'
L83	N06°13'50"E	15.96'	C83	20.00'	34°20'05"	11.99'	6.18'
L84	N06°14'08"E	28.08'	C84	15.00'	95°43'07"	25.06'	16.58'
L85	N00°31'01"E	6.87'	C85	15.00'	90°00'00"	23.56'	13.93'
L86	N00°31'01"E	8.29'	C86	3.00'	101°35'27"	5.32'	3.68'
L87	N83°45'52"E	14.18'	C87	15.00'	78°34'28"	20.57'	12.27'
L88	N89°19'04"W	15.75'	C88	3.00'	94°12'52"	4.93'	3.23'
L89	N89°28'59"E	11.00'	C89	28.00'	85°47'08"	41.92'	26.01'
L90	S89°28'59"E	11.00'	C90	25.00'	90°00'00"	39.27'	25.00'
L91	N00°31'01"E	25.00'	C91	5.00'	180°00'00"	15.71'	-----
L92	N89°28'59"W	15.93'	C92	28.00'	76°12'57"	37.25'	21.96'
L93	S89°28'59"E	4.61'	C93	3.00'	94°08'59"	4.93'	3.23'
L94	N89°28'59"W	28.76'	C94	28.00'	48°53'21"	23.99'	12.73'
L95	S00°31'01"W	15.60'	C95	72.00'	53°02'21"	66.65'	35.93'
L96	S89°28'59"E	5.00'	C96	3.00'	97°57'52"	5.13'	3.45'
L97	N00°31'01"E	8.65'	C97	15.00'	82°02'08"	21.48'	13.05'
L98	N89°28'59"W	15.82'	C98	28.00'	83°06'28"	40.61'	24.82'
L99	S00°31'01"E	15.82'	C99	30.00'	95°47'53"	50.16'	33.20'
L100	S00°31'01"W	15.93'	C100	10.00'	90°00'18"	15.71'	10.00'
L101	N89°28'59"W	6.19'	C101	3.00'	84°16'53"	4.41'	2.71'
L102	N00°31'01"E	15.88'	C102	28.00'	88°25'10"	43.21'	27.24'
L103	N00°31'01"E	14.00'	C103	3.00'	91°34'50"	4.80'	3.08'
L104	S83°45'52"E	9.32'	C104	3.00'	90°00'00"	4.71'	3.02'
L105	N06°13'50"E	13.82'	C105	200.67'	1°45'02"	6.13'	3.07'
L106	S06°13'50"W	29.18'	C106	250.67'	14°05'09"	61.63'	30.97'
L107	S89°28'59"E	16.93'	C107	199.33'	18°34'57"	64.65'	32.61'
L108	N83°45'52"E	14.18'	C108	249.33'	14°02'08"	61.08'	30.69'
L109	N00°31'01"E	8.29'	C109	200.77'	15°49'13"	58.91'	28.67'
L110	N89°28'59"W	4.98'	C110	3.33'	180°23'38"	4.18'	-----
L111	S00°31'01"W	14.06'	C111	25.00'	10°12'28"	4.45'	2.23'
L112	N89°28'59"W	4.99'	C112	30.00'	95°47'53"	50.16'	33.20'
L113	S89°28'59"E	76.92'	C113	25.00'	90°00'00"	39.27'	25.00'
L114	S89°28'59"E	76.92'	C114	25.00'	90°00'00"	39.27'	25.00'
L115	N00°31'01"E	608.16'					
L116	S00°31'01"W	565.21'					
L117	N83°41'06"E	48.06'					
L118	N73°32'38"W	45.82'					
L119	S81°55'22"E	115.10'					
L120	N83°41'06"E	121.57'					
L121	S83°41'06"E	156.36'					
L122	S83°41'06"E	156.36'					

FOR CONTINUATION SEE SHEET HC3



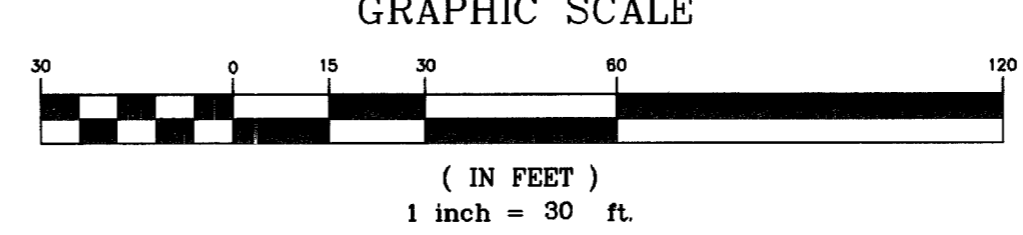
CAUTION TO CONTRACTOR !
EXISTING UTILITY LOCATIONS SHOWN HEREON ARE APPROXIMATE ONLY. IT SHALL BE THE CONTRACTOR'S RESPONSIBILITY TO DETERMINE THE EXACT VERTICAL AND HORIZONTAL LOCATION OF ALL EXISTING UNDERGROUND UTILITIES PRIOR TO COMMENCING CONSTRUCTION. NO REPRESENTATION IS MADE THAT ALL EXISTING UTILITIES ARE SHOWN HEREON. THE ENGINEER ASSUMES NO RESPONSIBILITY FOR UTILITIES NOT SHOWN OR UTILITIES NOT SHOWN IN THEIR PROPER LOCATION. 98560



Call before you Dig.
1-800-227-2600
UNDERGROUND SERVICE (USA)

BENCH MARK:
CITY OF LAS VEGAS BENCH MARK 1LV00 3NE66
CITY OF LAS VEGAS PIN AND PLATE IN THE TOP OF CURB, SOUTHWEST CORNER OF RAINBOW BOULEVARD AND RED COACH AVENUE NEAR THE PT OF RED COACH AVENUE
NAVD '88 DATUM
ELEVATION = 2319.021 U.S. SURVEY FEET
ELEVATION = 706.839 METERS

BASIS OF BEARINGS:
THE BASIS OF BEARING FOR THIS SURVEY IS THE WESTERLY LINE OF THE NORTHWEST QUARTER (NW 1/4) OF SECTION 2, TOWNSHIP 20 SOUTH, RANGE 60 EAST, M.D.M., CITY OF LAS VEGAS, COUNTY OF CLARK, STATE OF NEVADA, WHICH BEARS NORTH 00°31'01" EAST, AS PER MAP RECORDED IN BOOK 105, PAGE 58 OF PLATS IN THE OFFICE OF THE COUNTY RECORDER OF SAID COUNTY.



Ovation Development
1175 AMERICAN PACIFIC DRIVE, SUITE F
HENDERSON, NEVADA 89074
CONTACT: JAN COVER (702) 990-2325

FEINT
DESIGNING FOR THE FUTURE
LANDSCAPE ARCHITECTS & ENGINEERS
1009 WHITNEY RANCH DRIVE - HENDERSON, NEVADA 89014 - (702) 246-6415

HORIZONTAL CONTROL PLAN I

LONE MOUNTAIN APARTMENTS

SHEET **HC1**
6 OF 41 SHEETS
DRAWING NO **107V4322**

SCALE: 1" = 30'

PROJECT NO: 573-E104

DESIGNED BY: _____
CHECKED BY: _____
DRAWN BY: _____

MAY 2004
MAY 2004
MAY 2004

STATE OF NEVADA
GARY A. STOCKHOFF
EXPIRES 06-30-08
CIVIL ENGINEER
No. 12100

REVISION