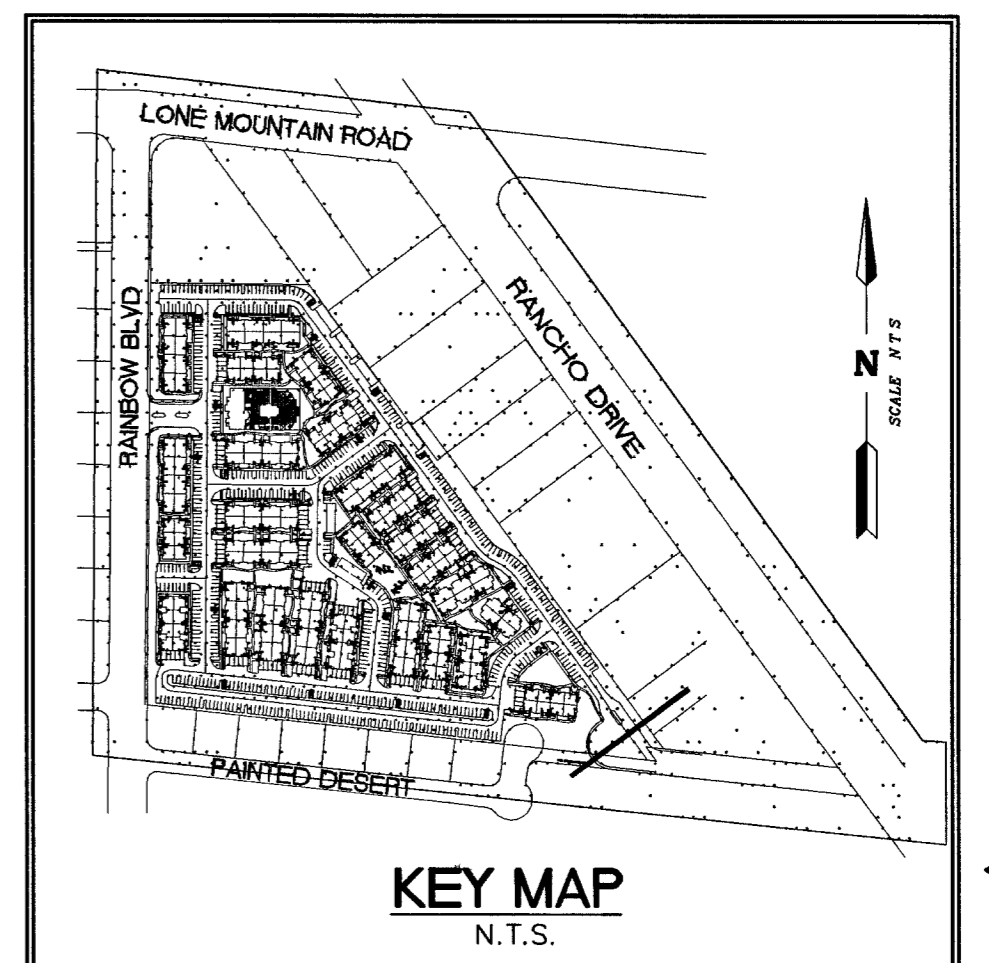
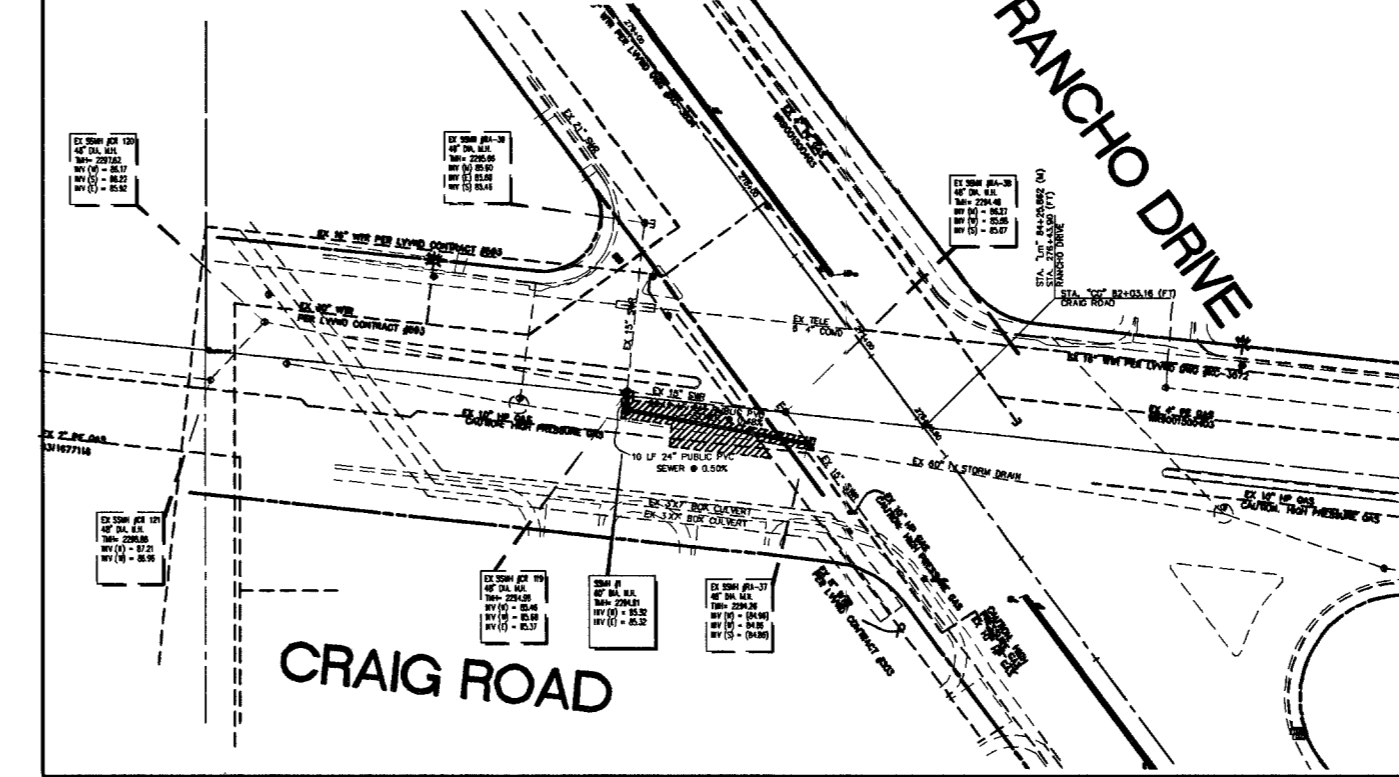


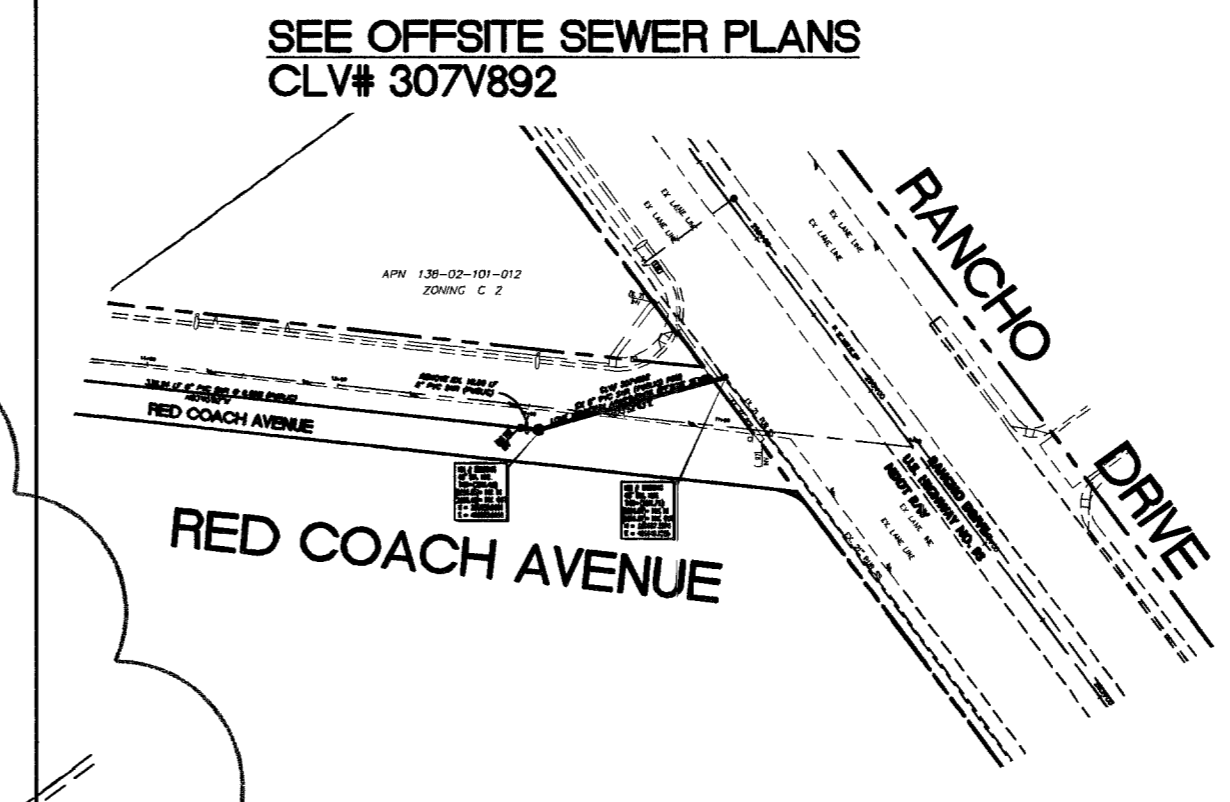
SYMBOLS		DESCRIPTION
EXISTING	PROPOSED	
EX 8" WTR	8" WTR	WATER LINE
EX 8" SWR	8" SWR	SEWER LINE
EX 54" RCP SD	54" RCP SD	STORM DRAIN LINE
EX 4" GAS	4" GAS	GAS LINE
		WATER SERVICE LATERAL
		SEWER SERVICE LATERAL
		FIRE HYDRANT W/ ASSEMBLY
		SEWER MANHOLE
		STORM DRAIN MANHOLE
		GATE VALVE
		SEWER CLEANOUT
		SIAMESE FDC W/ 4" LINE TO RISER ROOM



SEE OFFSITE RELIEF SEWER PLANS
CLV# 307V893



SEE OFFSITE SEWER PLANS
CLV# 307V892



WATER QUANTITIES		PUBLIC	PRIVATE
1	FIRE HYD W/ ASSEMBLY PER UDACS PLATE 7	3 EA	16 EA
2	8" GATE VALVE PER UDACS PLATE 5	1 EA	26 EA
3	8" 90° BEND PER UDACS PLATE 5	1 EA	5 EA
4	8" 45° BEND PER UDACS PLATE 5	4 EA	4 EA
5	8" 22.5° BEND PER UDACS PLATE 5	- EA	3 EA
6	8" 11.25° BEND PER UDACS PLATE 5	- EA	1 EA
7	8" TEE PER UDACS PLATE 5	- EA	4 EA
8	8" CAP W/ 2" BLOW-OFF PER UDACS PLATE 4A	- EA	- EA
9	8" 45° BEND PER UDACS PLATE 5	4 EA	- EA
10	6"x3" FMCT PER UDACS PLATE 21D	2 EA	- EA
11	2" RPPA PER UDACS PL. NO. 11A	- EA	2 EA
12	8" RPPA PER UDACS PLATE NO. 11C	2 EA	- EA
13	8" x 6" REDUCER	- EA	14 EA
14	10" x 8" REDUCER	1 EA	- EA
15	16" x 10" TAPPING TEE W/ 10" TAPPING VALVE	2 EA	- EA
16	10" TEE W/ 8" REDUCER	1 EA	- EA
17	12" CAP W/ 2" BLOW-OFF PER UDACS PLATE 4	1 EA	- EA
18	SIAMESE FDC W/ 4" LINE TO RISER ROOM PAINTED RED SIGN TO INDICATE UNIT SERVED SEE DETAIL A SHEET 18	- EA	27 EA
19	10" 90° BEND PER UDACS PLATE 5	1 EA	- EA
20	12" 90° BEND PER UDACS PLATE 5	1 EA	- EA
21	16" CUT IN VALVE PER UDACS PLATE 5	1 EA	- EA
22	2" WATER METER PER UDACS PLATE NO. 10	2 EA	- EA
23	10" TEE WITH 6" REDUCER PER UDACS PLATE 5	2 EA	- EA
24	10" TEE WITH 6" REDUCER PER UDACS PLATE 5	1 EA	- EA
25	10" GATE VALVE PER UDACS PLATE NO. 5	1 EA	- EA
26	10" PVC WATER MAIN	1,397 LF	- LF
27	8" PVC WATER MAIN	110 LF	3,963 LF
28	6" PVC WATER MAIN	- LF	593 LF
29	4" WATER LATERAL (FIRE)	- LF	1,220 LF
30	2" WATER LATERAL	- LF	985 LF
31	1" WATER LATERAL	- LF	194 LF
SEWER QUANTITIES			
32	48" SEWER MANHOLE (DEPTH UNDER 6 FEET)	- EA	- EA
33	48" SEWER MANHOLE (DEPTH OVER 6 FEET)	10 EA	15 EA
34	8" PVC SEWER MAIN	2,579 LF	1,118 LF
35	6" PVC SEWER LATERAL	- LF	1,447 LF
36	4" PVC SEWER LATERAL	- LF	66 LF
37	3" PVC SEWER LATERAL	- LF	83 LF
38	SEWER CLEANOUT	- EA	7 EA
39	WATER/SEWER/STORM MAIN CROSSINGS	4 EA	- EA
40	INSTALL BACK WATER VALVE	- EA	3 EA

• ALL QUANTITIES ARE AN ESTIMATE ONLY. THE CONTRACTOR IS RESPONSIBLE FOR QUANTITIES FOR BIDDING PURPOSES

CAUTION TO CONTRACTOR!
EXISTING UTILITY LOCATIONS SHOWN HEREON ARE APPROXIMATE ONLY. IT SHALL BE THE CONTRACTOR'S RESPONSIBILITY TO DETERMINE THE EXACT VERTICAL AND HORIZONTAL LOCATION OF ALL EXISTING UNDERGROUND UTILITIES PRIOR TO COMMENCING CONSTRUCTION. NO REPRESENTATION IS MADE THAT ALL EXISTING UTILITIES ARE SHOWN HEREON. THE ENGINEER ASSUMES NO RESPONSIBILITY FOR UTILITIES NOT SHOWN OR UTILITIES NOT SHOWN IN THEIR PROPER LOCATION.



Call before you Dig.
1-702-593-6111
1-800-227-2600

BENCH MARK:
CITY OF LAS VEGAS BENCH MARK 1LV00 3NEE6
CITY OF LAS VEGAS PIN AND PLATE IN THE TOP OF CURB, SOUTHWEST CORNER OF RAINBOW BOULEVARD AND RED COACH AVENUE NEAR THE PT OF RED COACH AVENUE
NAVD '88 DATUM
ELEVATION = 2319.021 U.S. SURVEY FEET
ELEVATION = 706.839 METERS

BASIS OF BEARINGS:
THE BASIS OF BEARING FOR THIS SURVEY IS THE WESTERLY LINE OF THE NORTHWEST QUARTER (NW 1/4) OF SECTION 2, TOWNSHIP 20 SOUTH, RANGE 60 EAST, M.D.M., CITY OF LAS VEGAS, COUNTY OF CLARK, STATE OF NEVADA, WHICH BEARS NORTH 00°31'01" EAST, AS PER MAP RECORDED IN BOOK 105, PAGE 58 OF PLATS IN THE OFFICE OF THE COUNTY RECORDER OF SAID COUNTY.

APPROVED FOR CONSTRUCTION
1ST APPROVED 11/15/05
LAS VEGAS VALLEY WATER DISTRICT

OVATION DEVELOPMENT
1175 AMERICAN PACIFIC DRIVE, SUITE F
HENDERSON, NEVADA 89074
CONTACT: JAN COVER (702) 990-2325

DESIGNING FOR THE FUTURE
PLANNERS • CONSULTING ENGINEERS • SURVEYORS
1009 WHITNEY MANOR DRIVE • HENDERSON, NEVADA 89014 • (702) 248-6415

MASTER UTILITY PLAN

LONE MOUNTAIN APARTMENTS

SHEET: MAY 2004
DESIGNED BY: MAY 2004
CHECKED BY: MAY 2004
PROJECT NO.: 682-E169
SCALE: 1" = 60'

SHEET C5
5 OF 41 SHEETS
DRAWING NO 107V4322

REPLLOT