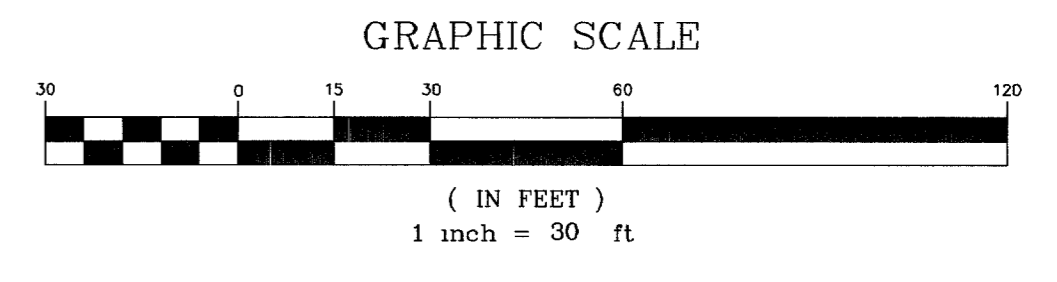
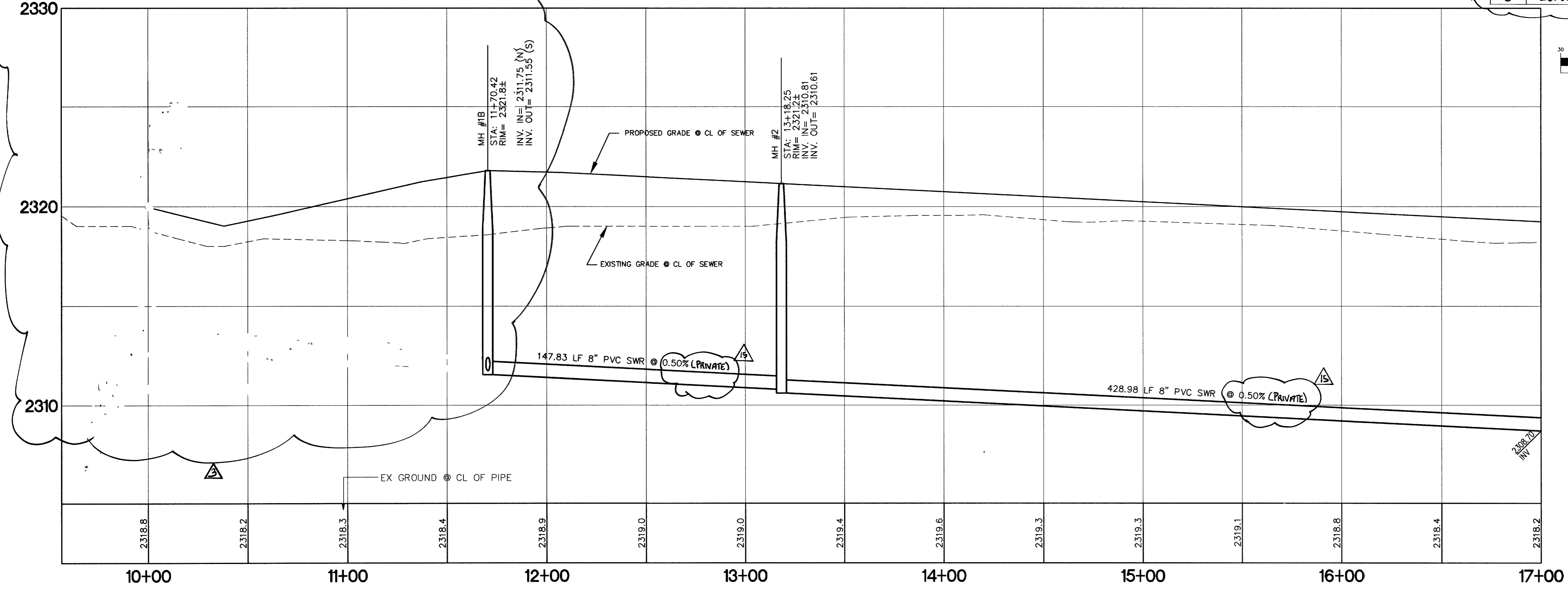


PUBLIC MANHOLE SCHEDULE

MH #	NORTHING	EASTING	RIM	INV IN	INV OUT
1A	281481.3373	485002.1959	2320.01	2312.80	2312.60
2	281479.7998	48572.6056	2321.84	2317.75	2311.55
3	281331.9715	485171.2718	2321.2±	2310.81	2310.61
4	280903.0049	485167.4014	2318.3±	2308.46	2308.26
5	280860.0448	485560.5860	2316.5±	2306.29	2306.09
6	280826.7843	485864.9965	2315.1±	2304.57	2304.37
7	280927.8494	485876.0390	2315.0±	2303.86	2303.66
8	280696.0809	486218.8150	2313.5±	2300.82	2300.62
9	281009.8638	485987.1020	2314.2±	2302.97	2302.77
13	280859.2897	485071.2114	2319.7±	2309.19	2308.99



LEGEND

- NEW AC
- AC TO BE REMOVED AND REPLACED
- AC TO BE REMOVED
- PSE PUBLIC SEWER EASEMENT

GARY A. STOCKHOFF
 Exp 6/30/06
 5-8-07
 For Review
 DS only

CAUTION TO CONTRACTOR !
 EXISTING UTILITY LOCATIONS SHOWN HEREON ARE APPROXIMATE ONLY. IT SHALL BE THE CONTRACTOR'S RESPONSIBILITY TO DETERMINE THE EXACT VERTICAL AND HORIZONTAL LOCATION OF ALL EXISTING UNDERGROUND UTILITIES PRIOR TO COMMENCING CONSTRUCTION. NO REPRESENTATION IS MADE THAT ALL EXISTING UTILITIES ARE SHOWN HEREON. THE ENGINEER ASSUMES NO RESPONSIBILITY FOR UTILITIES NOT SHOWN OR UTILITIES NOT SHOWN IN THEIR PROPER LOCATION. 70398

CALL BEFORE YOU DIG
 1-702-593-6111
 NEVADA POWER ENVIRONMENT & SAFETY SERVICES DEPARTMENT

Call before you Dig.
 1-800-227-2600
 UNDERGROUND SERVICE (USA)

PUBLIC SEWER
PROFILE SCALE:
 HORIZONTAL: 1" = 30'
 VERTICAL: 1" = 3'

BASIS OF BEARINGS:
 THE BASIS OF BEARING FOR THIS SURVEY IS THE WESTERLY LINE OF THE NORTHWEST QUARTER (NW 1/4) OF SECTION 2, TOWNSHIP 20 SOUTH, RANGE 60 EAST, M.D.M., CITY OF LAS VEGAS, COUNTY OF CLARK, STATE OF NEVADA, WHICH BEARS NORTH 00°31'01" EAST, AS PER MAP RECORDED IN BOOK 105, PAGE 58 OF PLATS IN THE OFFICE OF THE COUNTY RECORDER OF SAID COUNTY.

BENCH MARK:
 CITY OF LAS VEGAS BENCH MARK 1LV00 3NE66
 CITY OF LAS VEGAS PIN AND PLATE IN THE TOP OF CURB, SOUTHWEST CORNER OF RAINBOW BOULEVARD AND RED COACH AVENUE NEAR THE PT OF RED COACH AVENUE
 NAVD '88 DATUM
 ELEVATION = 2319.021 U.S. SURVEY FEET
 ELEVATION = 706.839 METERS

OVATION DEVELOPMENT
 1175 AMERICAN PACIFIC DRIVE, SUITE F
 HENDERSON, NEVADA 89074
 CONTACT: JAN COVER (702) 990-2325

DESIGNING FOR THE FUTURE
 PLANNERS • CONSULTING ENGINEERS • SURVEYORS
 1009 WHITNEY RANCH DRIVE • HENDERSON, NEVADA 89014 • (702) 248-4415

PUBLIC SEWER PLAN AND PROFILE
 STA 9+50 TO 17+00

LONE MOUNTAIN APARTMENTS

ENGINEER'S SEAL:
 GARY A. STOCKHOFF
 CIVIL ENGINEER
 STATE OF NEVADA
 No. 1444

REVISIONS:

NO.	DATE	BY	REVISION
1	10/20/04	REH	DRAWN BY: REH
2	10/20/04	REH	DESIGNED BY: REH
3	10/20/04	PAL	CHECKED BY: PAL
4	10/20/04	PAL	PROJECT NO: 662-E189

PROJECT INFORMATION:
 SHEET: PP5
 23 OF 41 SHEETS
 DRAWING NO: 107V4322