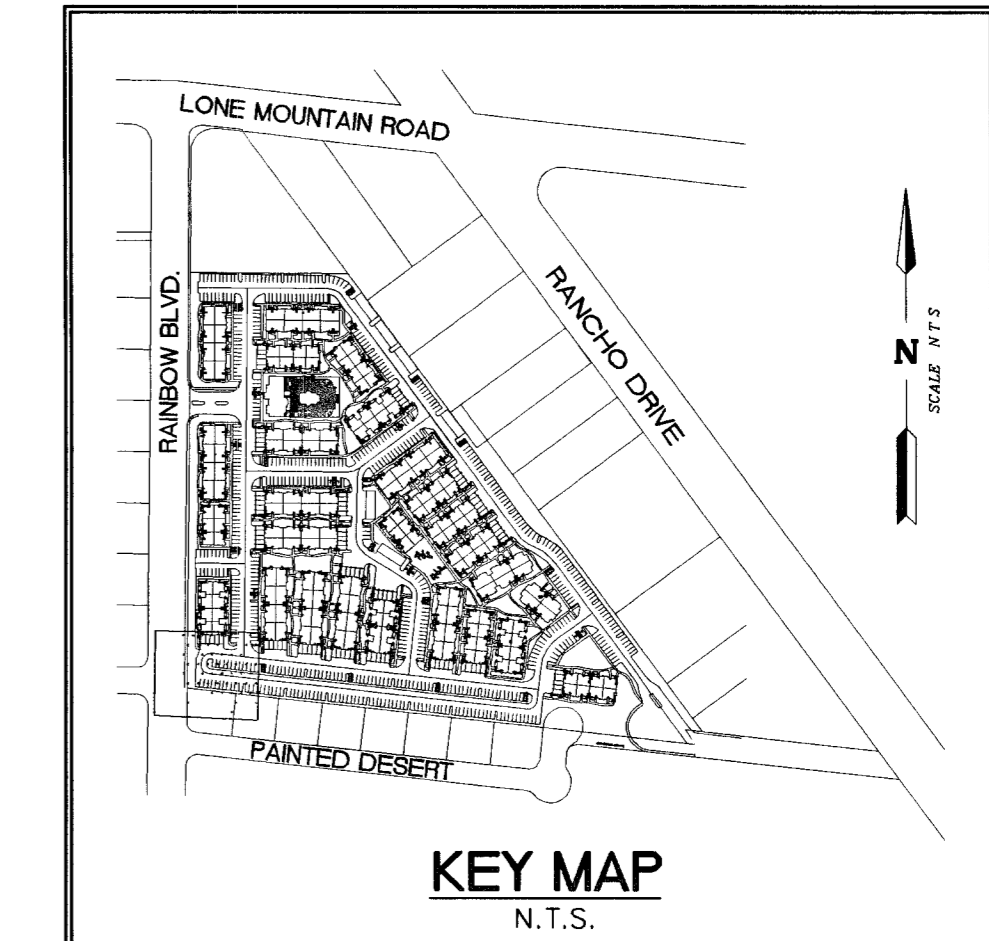
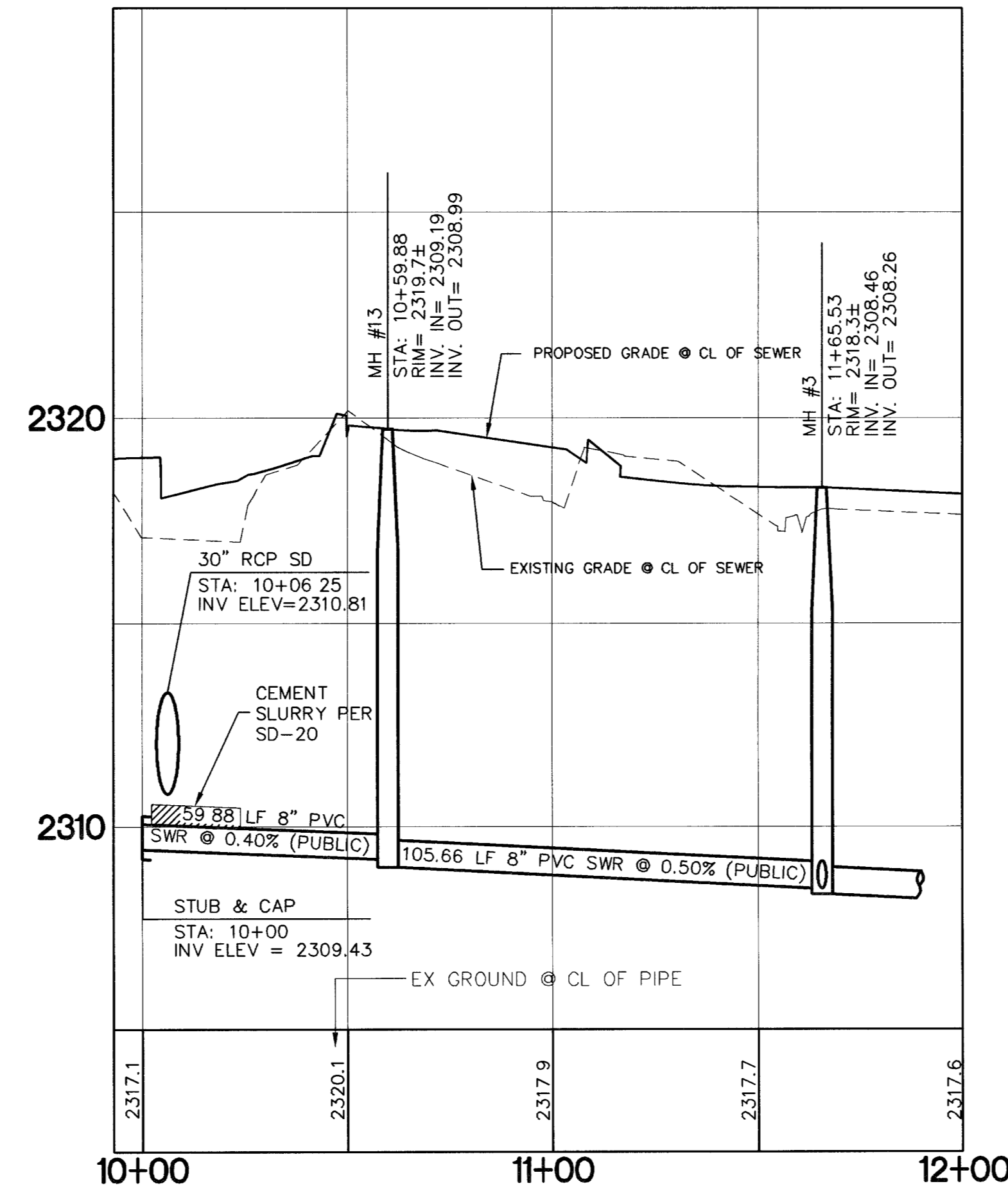


MATCHLINE
SEE SHEET 24 FOR CONTINUATION



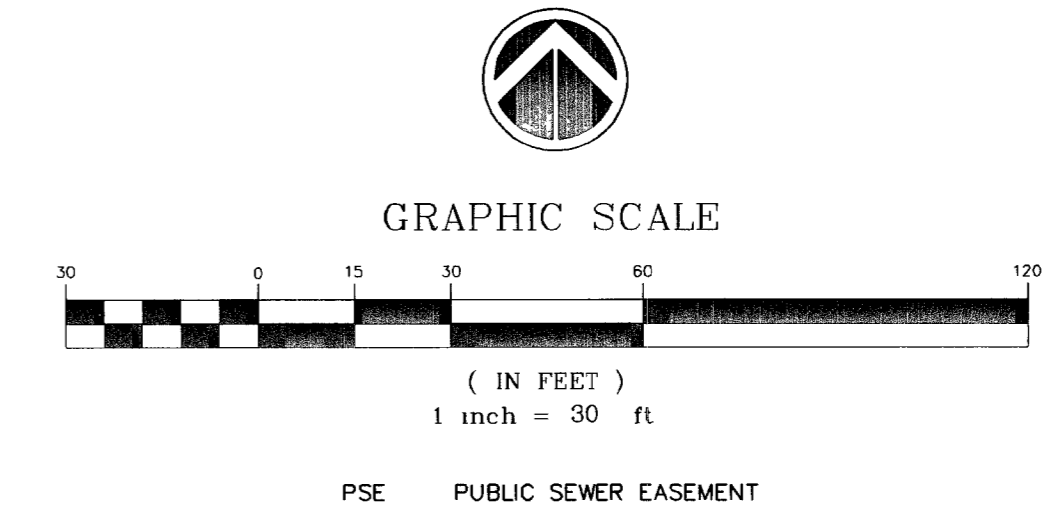
BASIS OF BEARINGS:
THE BASIS OF BEARING FOR THIS SURVEY IS THE WESTERLY LINE OF THE NORTHWEST QUARTER (NW 1/4) OF SECTION 2, TOWNSHIP 20 SOUTH, RANGE 60 EAST, M.D.M., CITY OF LAS VEGAS, COUNTY OF CLARK, STATE OF NEVADA, WHICH BEARS NORTH 00°31'01" EAST, AS PER MAP RECORDED IN BOOK 105, PAGE 58 OF PLATS IN THE OFFICE OF THE COUNTY RECORDER OF SAID COUNTY.

BENCH MARK:
CITY OF LAS VEGAS BENCH MARK 1LV00 3NEE6
CITY OF LAS VEGAS PIN AND PLATE IN THE TOP OF CURB, SOUTHWEST CORNER OF RAINBOW BOULEVARD AND RED COACH AVENUE NEAR THE PT OF RED COACH AVENUE
NAVD '88 DATUM
ELEVATION = 2319.021 U.S. SURVEY FEET
ELEVATION = 706.839 METERS



PUBLIC MANHOLE SCHEDULE

MH #	NORTHING	EASTING	RIM	INV IN	INV OUT
N/A	281481.5873	486082.1666	2320.0±	2312.80	2312.60
1B	281479.7998	485172.6056	2321.8±	2311.75	2311.55
2	281331.9715	485171.2718	2321.2±	2310.81	2310.61
3	280903.0049	485167.4014	2318.3±	2308.46	2308.26
4	280860.0448	485560.5860	2316.5±	2306.29	2306.09
5	280826.7843	485864.9965	2315.1±	2304.57	2304.37
6	280927.8494	485876.0390	2315.0±	2303.86	2303.66
7	280696.0809	486218.8150	2313.5±	2300.82	2300.62
8	281009.8638	485987.1020	2314.2±	2302.97	2302.77
13	280859.2847	485071.2114	2319.7±	2309.19	2308.99



PUBLIC SEWER

PROFILE SCALE:
HORIZONTAL: 1" = 30'
VERTICAL: 1" = 3'

CAUTION TO CONTRACTOR !
EXISTING UTILITY LOCATIONS SHOWN HEREON ARE APPROXIMATE ONLY. IT SHALL BE THE CONTRACTOR'S RESPONSIBILITY TO DETERMINE THE EXACT VERTICAL AND HORIZONTAL LOCATION OF ALL EXISTING UNDERGROUND UTILITIES PRIOR TO COMMENCING CONSTRUCTION. NO REPRESENTATION IS MADE THAT ALL EXISTING UTILITIES ARE SHOWN HEREON. THE ENGINEER ASSUMES NO RESPONSIBILITY FOR UTILITIES NOT SHOWN OR UTILITIES NOT SHOWN IN THEIR PROPER LOCATION. 100458 101499



Call before you Dig.

1-800-227-2600

UNDERGROUND SERVICE (USA)

REV	DATE	BY	DESCRIPTION
1	12/9/05	BRK	ADD THIS SHEET TO SET - AB 1/2/06
2	3/24/06	BRK	ADJUST SD, ADJUST SS, REMOVE MH #1A FROM SCHEDULE
3	10/9/06	BRK	ADJUST SD AT RAINBOW 5' WEST, ADJUST AFFECTED IMPROVEMENTS - 11/21/08
4	2/22/07	BRK	ADJUST SD AT RAINBOW AND RED COACH
5	4/10/07	BRK	ADD BELTUPAL SD AT RAINBOW & RED COACH

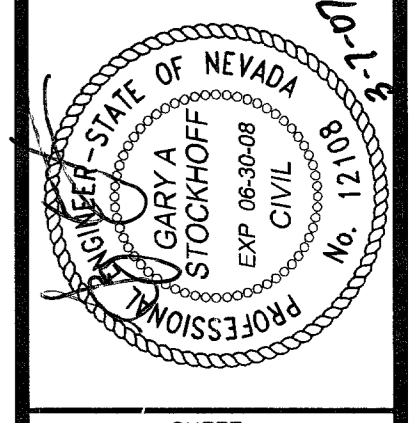
OVATION DEVELOPMENT
1175 AMERICAN PACIFIC DRIVE, SUITE F
RENO, NEVADA 89502
CONTACT: JANI GOYER (702) 990-2325

DESIGNING FOR THE FUTURE
PLANNERS - CONSULTING ENGINEERS - SURVEYORS
1009 WINNET RANCH DRIVE - HENDERSON, NEVADA 89014 - (702) 248-6415

PUBLIC SEWER PLAN AND PROFILE
ADDITIONAL STUB

LONE MOUNTAIN APARTMENTS

SHEET	DATE
DRAWN BY: REH	OCTOBER 2004
DESIGNED BY: REH	OCTOBER 2004
CHECKED BY: P.J.L.	OCTOBER 2004
PROJECT NO. 852-E169	SCALE: 1" = 30' HOR.



SHEET
PP6A
24A OF 41 SHEETS
DRAWING NO.
107V4322

RELOT