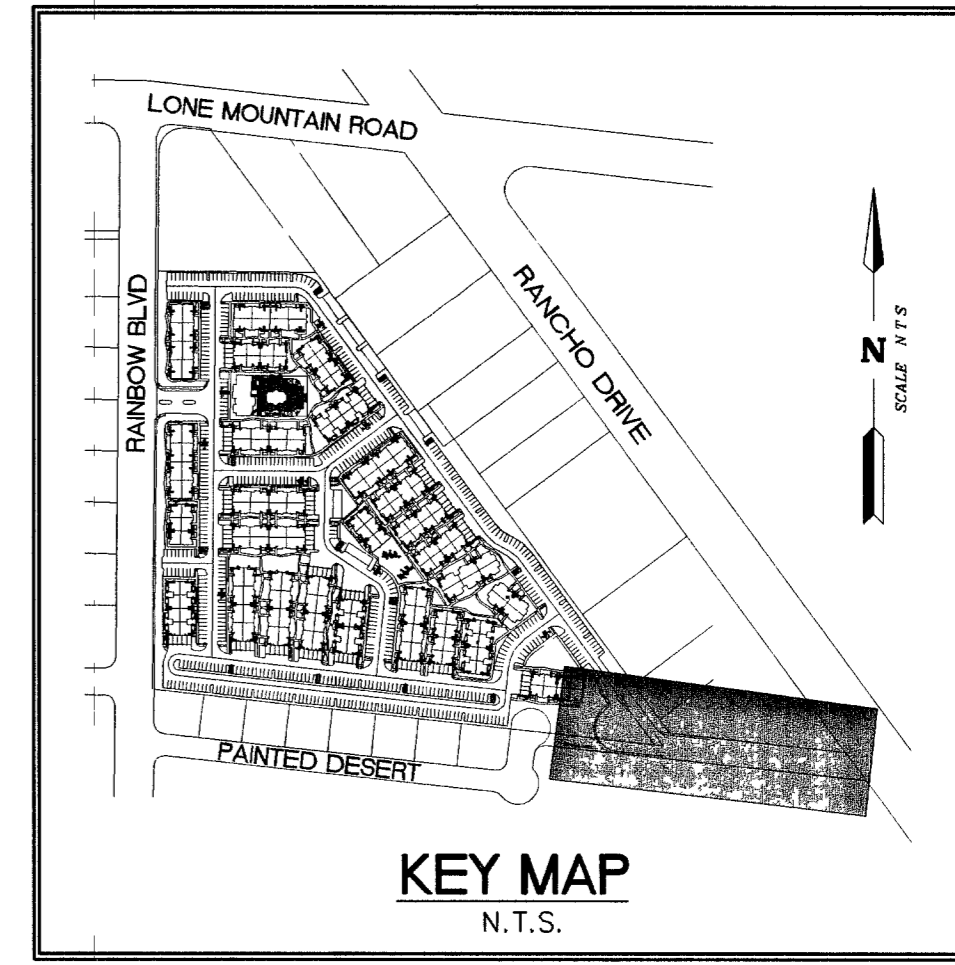
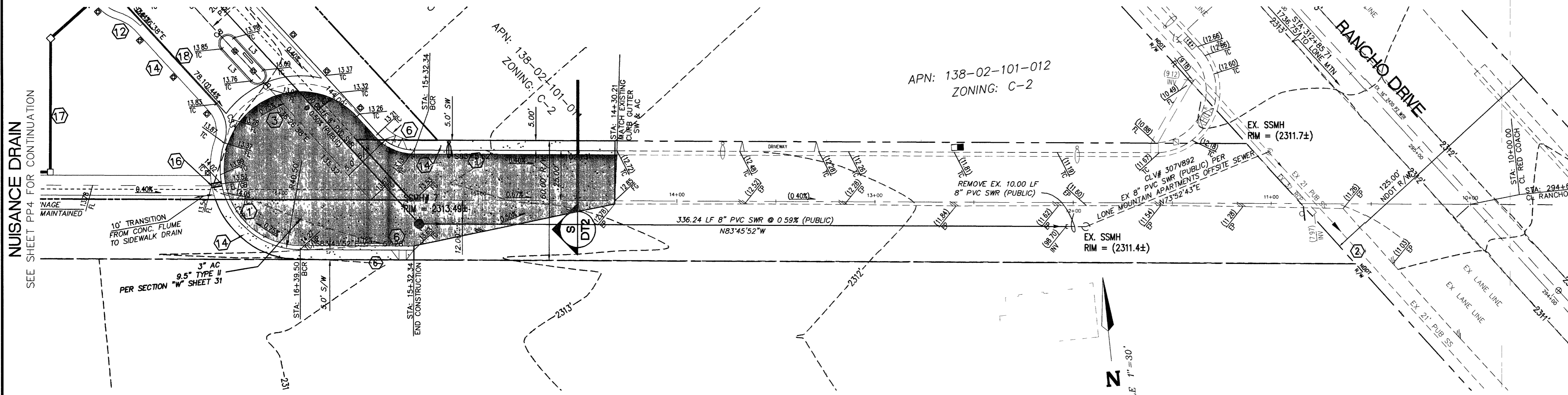
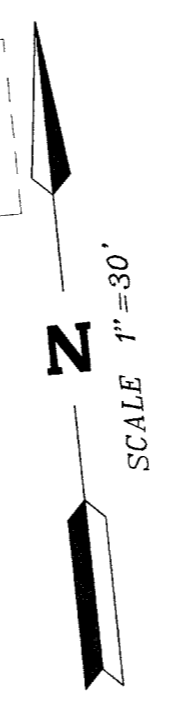


**PUBLIC SEWER PLAN AND PROFILE**  
SEE SHEET PP7 FOR CONTINUATION



**RED COACH AVENUE**  
PUBLIC STREET

PROFILE SCALE:  
HORIZONTAL 1" = 30'  
VERTICAL 1" = 3'



**GENERAL NOTES**

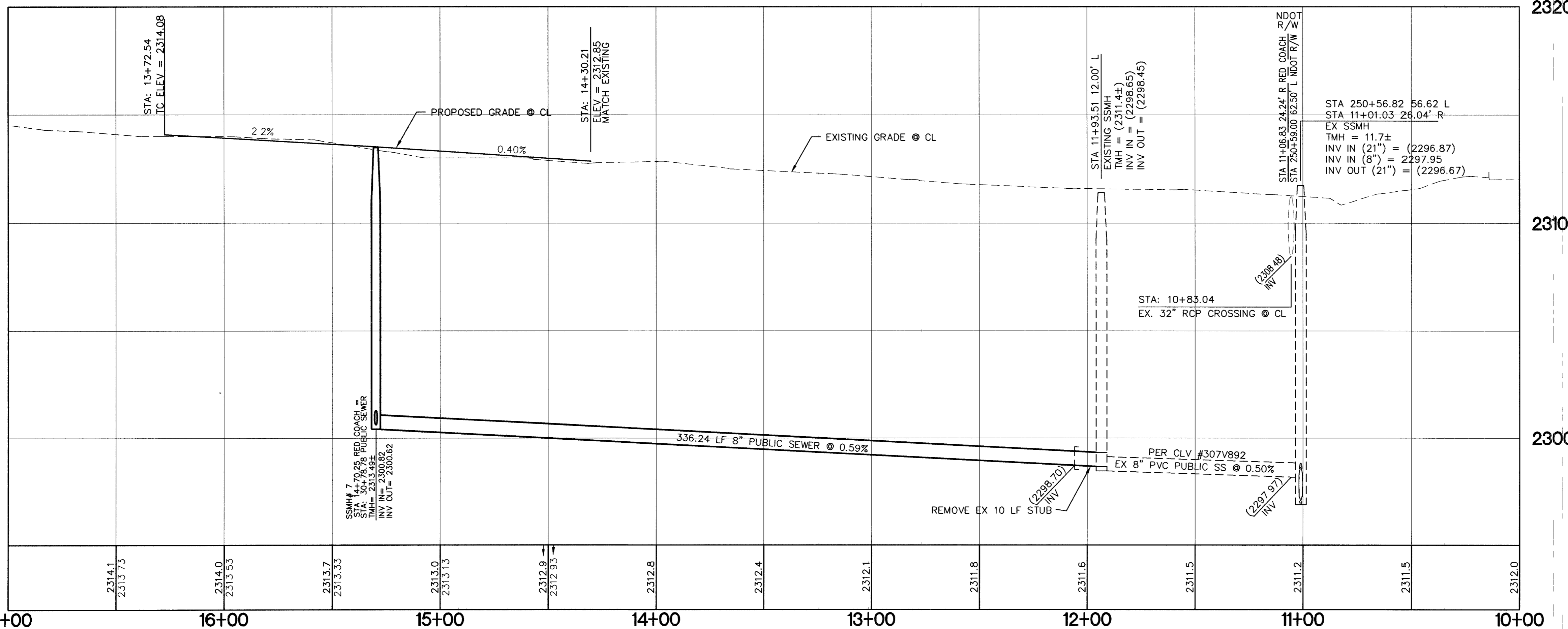
- SEE IMPROVEMENT PLANS FOR STREET SECTIONS AND DETAILS. SEE HORIZONTAL CONTROL FOR EXACT BEARINGS AND DISTANCES.
- THE QUANTITIES SHOWN HEREON ARE ESTIMATES ONLY AND ARE NOT TO BE USED FOR BIDDING PURPOSES.
- CONTRACTORS SHALL VERIFY ALL CONDITIONS AND DIMENSIONS AND SHALL REPORT ALL DISCREPANCIES TO THE ENGINEER PRIOR TO THE COMMENCEMENT OF WORK.
- ALL GRADING WORK TO CONFORM TO SOILS REPORT BY OWENS GEOTECHNICAL DATED: MARCH 22, 2004 JOB NO E-04-049
- ADD 2300 TO ALL GRADES SHOWN HERE ON.
- FINISH GRADING AROUND EACH BUILDING SHALL BE GRADED 2% MINIMUM AWAY FROM THE FINISHED FLOOR PER THE GEOTECHNICAL REPORT AND THE DETAIL SHOWN ON SHEET 4.
- SEE SHEET C3 FOR C.L.V. GRADING NOTES.
- SEE HORIZONTAL CONTROL PLAN FOR CURVE DATA TABLE.

**BASIS OF BEARINGS:**

THE BASIS OF BEARING FOR THIS SURVEY IS THE WESTERLY LINE OF THE NORTHWEST QUARTER (NW 1/4) OF SECTION 2, TOWNSHIP 20 SOUTH, RANGE 60 EAST, M.D.M., CITY OF LAS VEGAS, COUNTY OF CLARK, STATE OF NEVADA, WHICH BEARS NORTH 00°31'01" EAST, AS PER MAP RECORDED IN BOOK 105, PAGE 58 OF PLATS IN THE OFFICE OF THE COUNTY RECORDER OF SAID COUNTY.

**BENCH MARK:**

CITY OF LAS VEGAS BENCH MARK 1LV00 3NE6  
CITY OF LAS VEGAS PIN AND PLATE IN THE TOP OF CURB, SOUTHWEST CORNER OF RAINBOW BOULEVARD AND RED COACH AVENUE NEAR THE PT OF RED COACH AVENUE  
NAVD '88 DATUM  
ELEVATION = 2319.021 U.S. SURVEY FEET  
ELEVATION = 706.839 METERS

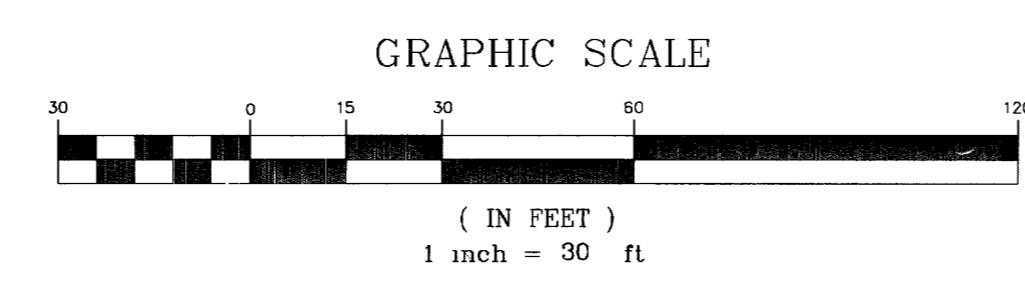


2320  
2310  
2300

**CAUTION TO CONTRACTOR !**  
EXISTING UTILITY LOCATIONS SHOWN HEREON ARE APPROXIMATE ONLY. IT SHALL BE THE CONTRACTOR'S RESPONSIBILITY TO DETERMINE THE EXACT VERTICAL AND HORIZONTAL LOCATION OF ALL EXISTING UNDERGROUND UTILITIES PRIOR TO COMMENCING CONSTRUCTION. NO REPRESENTATION IS MADE THAT ALL EXISTING UTILITIES ARE SHOWN HEREON. THE ENGINEER ASSUMES NO RESPONSIBILITY FOR UTILITIES NOT SHOWN OR UTILITIES NOT SHOWN IN THEIR PROPER LOCATION. 78291 dx 86678

**Call before you Dig.**  
1-702-593-6111  
1-800-227-2600  
NEVADA TONES ENVIRONMENT & SAFETY SERVICES DEPARTMENT UNDERGROUND SERVICE (USA)

- CONSTRUCTION NOTES**
- CONST. "L" TYPE CURB PER C.C. AREA STD. DWG. #216, SEE SHEET 40
  - CONST. 8" CROSS GUTTER PER C.C. AREA STD. DWG. #228, SEE SHEET 40
  - CONST. "L" TYPE ISLAND CURB PER C.C. AREA STD. DWG. #219, SEE SHEET 40
  - CONST. CASE I HANDICAP RAMP PER C.C. AREA STD. DWG. #235, SEE SHEET 40
  - CONST. 5' WIDE CONC. SIDEWALK PER C.C. AREA STD. DWG. #234, SEE SHEET 40
  - CONST. SIDEWALK UNDER DRAIN PER C.C. AREA STD. DWG. #236, SEE SHEET 40
  - CONST. "A" CURB W/ 6" FACE PER C.C. AREA DWG. #219, SEE SHEET 40



- LEGEND**
- NEW AC
  - AC TO BE REMOVED AND REPLACED
  - AC TO BE REMOVED
  - OFFSITE IMPROVEMENTS

**PUBLIC MANHOLE SCHEDULE**

MH #	NORTHING	EASTING	RIM	INV IN	INV OUT
1A	281481.3373	485002.1959	2320.0±	2312.80	2312.60
1B	281479.7998	485172.6056	2321.8±	2311.75	2311.55
2	281331.9715	485171.2718	2321.2±	2310.81	2310.61
3	280903.0049	485167.4014	2318.3±	2308.46	2308.26
4	280860.0448	485560.5860	2316.5±	2306.29	2306.09
5	280826.7843	485864.9965	2315.1±	2304.57	2304.37
6	280927.8494	485876.0390	2315.0±	2303.86	2303.66
7	280696.0809	486218.8150	2313.5±	2300.82	2300.62
8	281009.8638	485987.1020	2314.2±	2302.97	2302.77
13	280859.2847	485071.2114	2314.7±	2309.19	2308.99

**OFFSITE WORK**

**OVATION DEVELOPMENT**  
1175 AMERICAN PACIFIC DRIVE, SUITE F  
HENDERSON, NEVADA 89011 (702) 980-8415  
CONTACT: JUAN GOMEZ (702) 980-2325

**DESIGNING FOR THE FUTURE**  
PLANNERS • CONSULTING ENGINEERS • SURVEYORS  
1008 WHITNEY RANCH DRIVE • HENDERSON, NEVADA 89011 • (702) 246-8415

**ENGINEER-STATE OF NEVADA**  
PETER J. PETERSON  
Exp: 12/23/09  
CIVIL  
REGISTRATION NO. 14448

**SHEET**  
PP8  
28 OF 41 SHEETS  
DRAWING NO  
107V4322

SCALE: 1" = 30' HOR  
682-E109

PROJECT NO:  
892-E109

CHECKED BY:  
P.J.

DESIGNED BY:  
REH

DRAWN BY:  
REH

DATE:  
APRIL 2004