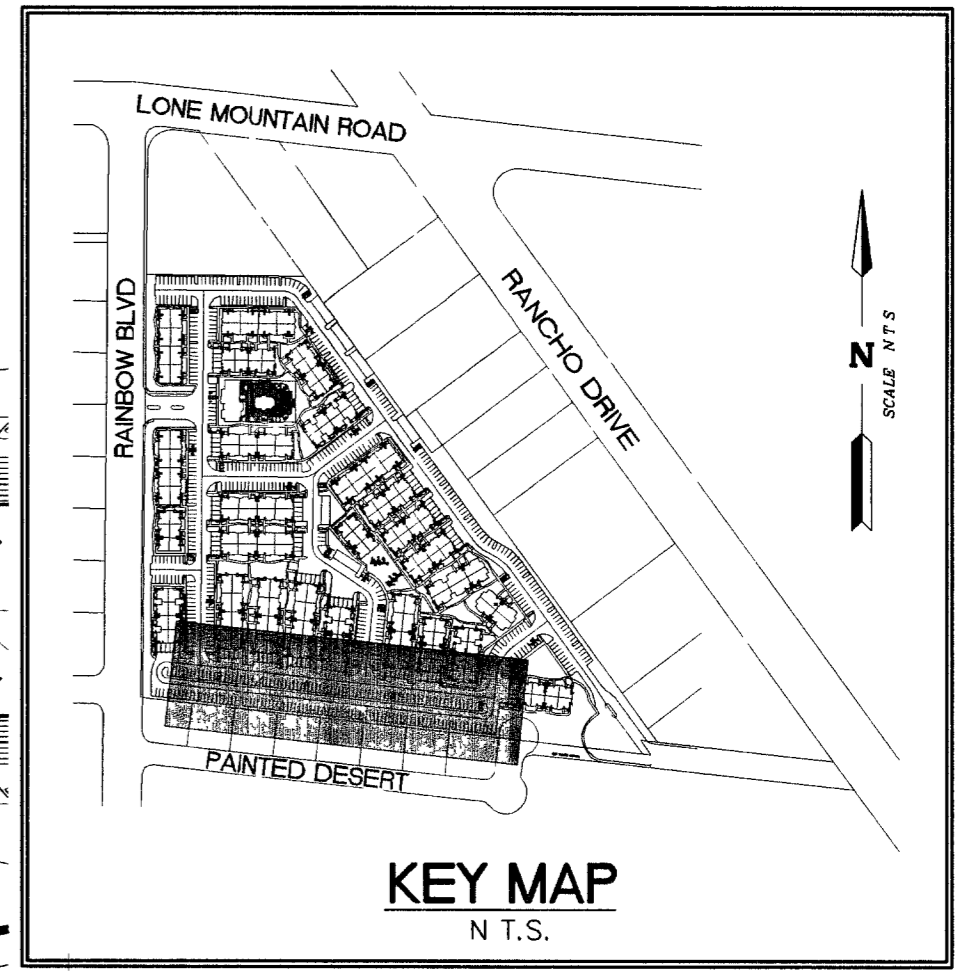
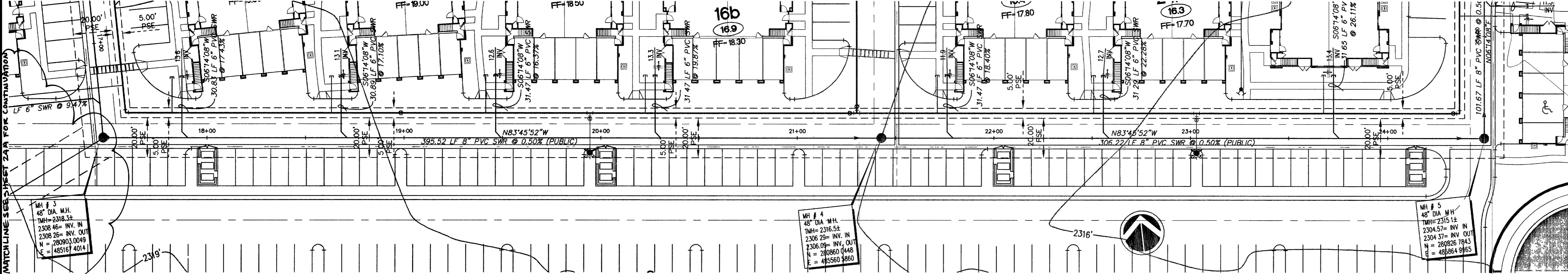


MATCHLINE STA. 17+00
SEE SHEET 23 FOR CONTINUATION

MATCHLINE STA. 25+00
SEE SHEET 25 FOR CONTINUATION

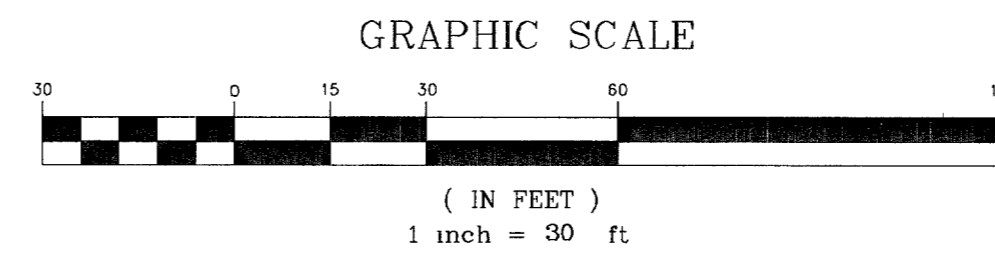


PUBLIC MANHOLE SCHEDULE

MH #	NORTHING	EASTING	RIM	INV. IN	INV. OUT
1A	281481.3373	485002.1959	2320.0±	2312.80	2312.60
1B	281479.7998	485172.6056	2321.8±	2311.75	2311.55
2	281331.9715	485171.2718	2321.2±	2310.81	2310.61
3	280903.0049	485167.4014	2318.3±	2308.46	2308.26
4	280860.0448	485560.5860	2316.5±	2306.29	2306.09
5	280826.7843	485864.9965	2315.1±	2304.57	2304.37
6	280927.8494	485876.0390	2315.0±	2303.86	2303.66
7	280696.0809	486218.8150	2313.5±	2300.82	2300.62
8	281009.8638	485987.1020	2314.2±	2302.97	2302.77
13	280859.2647	485071.2114	2314.7±	2304.19	2303.99

PUBLIC SEWER

PLAN SCALE:
HORIZONTAL 1" = 30'

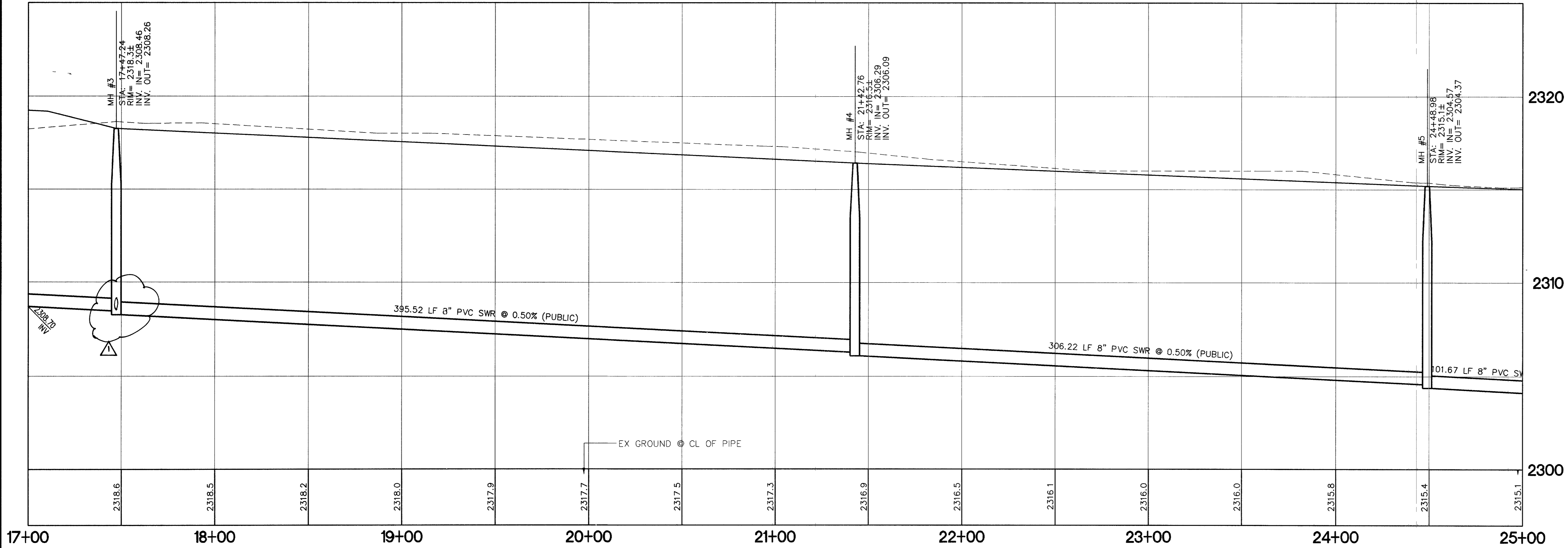


BASIS OF BEARINGS:

THE BASIS OF BEARING FOR THIS SURVEY IS THE WESTERLY LINE OF THE NORTHWEST QUARTER (NW 1/4) OF SECTION 2, TOWNSHIP 20 SOUTH, RANGE 60 EAST, M.D.M., CITY OF LAS VEGAS, COUNTY OF CLARK, STATE OF NEVADA, WHICH BEARS NORTH 00°31'01" EAST, AS PER MAP RECORDED IN BOOK 105, PAGE 58 OF PLATS IN THE OFFICE OF THE COUNTY RECORDER OF SAID COUNTY.

BENCH MARK:

CITY OF LAS VEGAS BENCH MARK 1LV00 3NEE6
CITY OF LAS VEGAS PIN AND PLATE IN THE TOP OF CURB, SOUTHWEST CORNER OF RAINBOW BOULEVARD AND RED COACH AVENUE NEAR THE PT OF RED COACH AVENUE
NAVD '88 DATUM
ELEVATION = 2319.021 U.S. SURVEY FEET
ELEVATION = 706.839 METERS



PUBLIC SEWER

PROFILE SCALE:
HORIZONTAL 1" = 30'
VERTICAL 1" = 3'

CAUTION TO CONTRACTOR!

EXISTING UTILITY LOCATIONS SHOWN HEREON ARE APPROXIMATE ONLY. IT SHALL BE THE CONTRACTOR'S RESPONSIBILITY TO DETERMINE THE EXACT VERTICAL AND HORIZONTAL LOCATION OF ALL EXISTING UNDERGROUND UTILITIES PRIOR TO COMMENCING CONSTRUCTION. NO REPRESENTATION IS MADE THAT ALL EXISTING UTILITIES ARE SHOWN HEREON. THE ENGINEER ASSUMES NO RESPONSIBILITY FOR UTILITIES NOT SHOWN OR UTILITIES NOT SHOWN IN THEIR PROPER LOCATION. 70392 86675



Call before you Dig.
NEVADA POWER ENVIRONMENT & SAFETY SERVICES DEPARTMENT
UNDERGROUND SERVICE (USA)

REVISION
DATE BY

OVATION DEVELOPMENT
1175 AMERICAN PACIFIC DRIVE, SUITE F
HENDERSON, NEVADA 89074
CONTACT: JAN GOYER (702) 990-2325

PUBLIC SEWER PLAN AND PROFILE
STA 17+00 TO 25+00

LONE MOUNTAIN APARTMENTS

PROFESSIONAL ENGINEER - STATE OF NEVADA
PETER J. LAAS
Exp: 12/31/2009
No. 14447
CIVIL

SHEET
PP6
24 OF 41 SHEETS
DRAWING NO.
107V4322